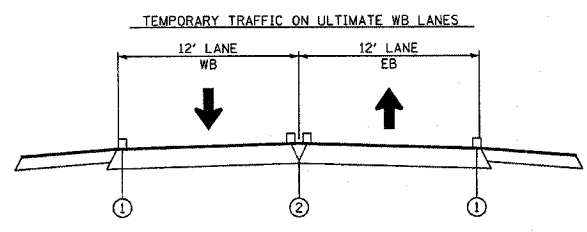
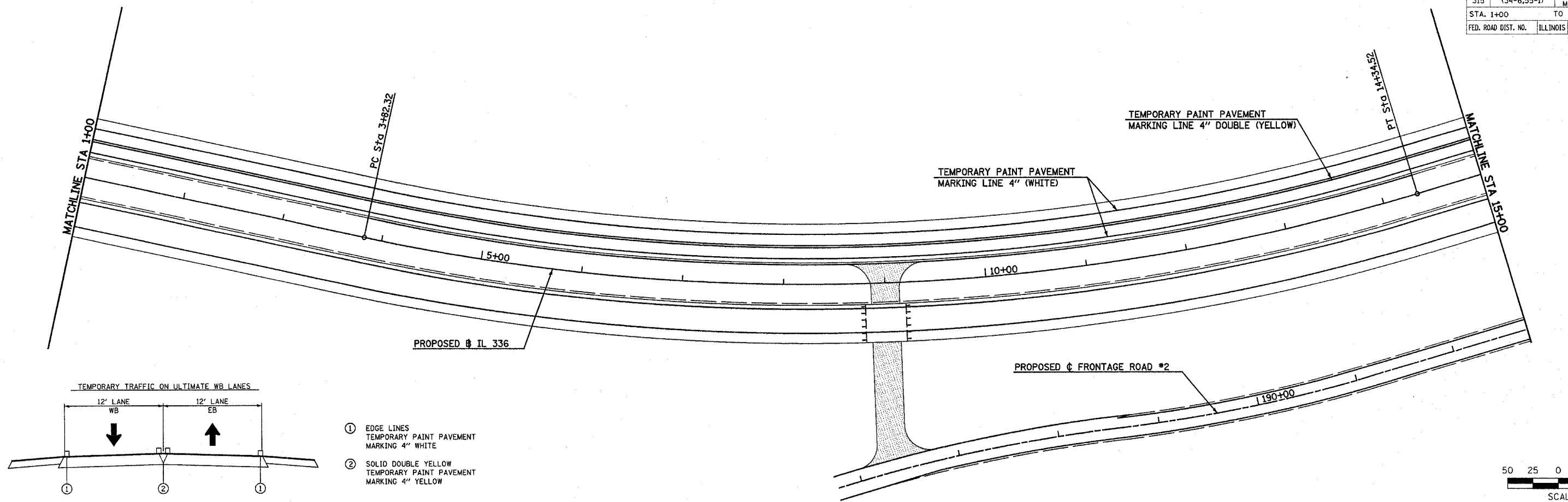
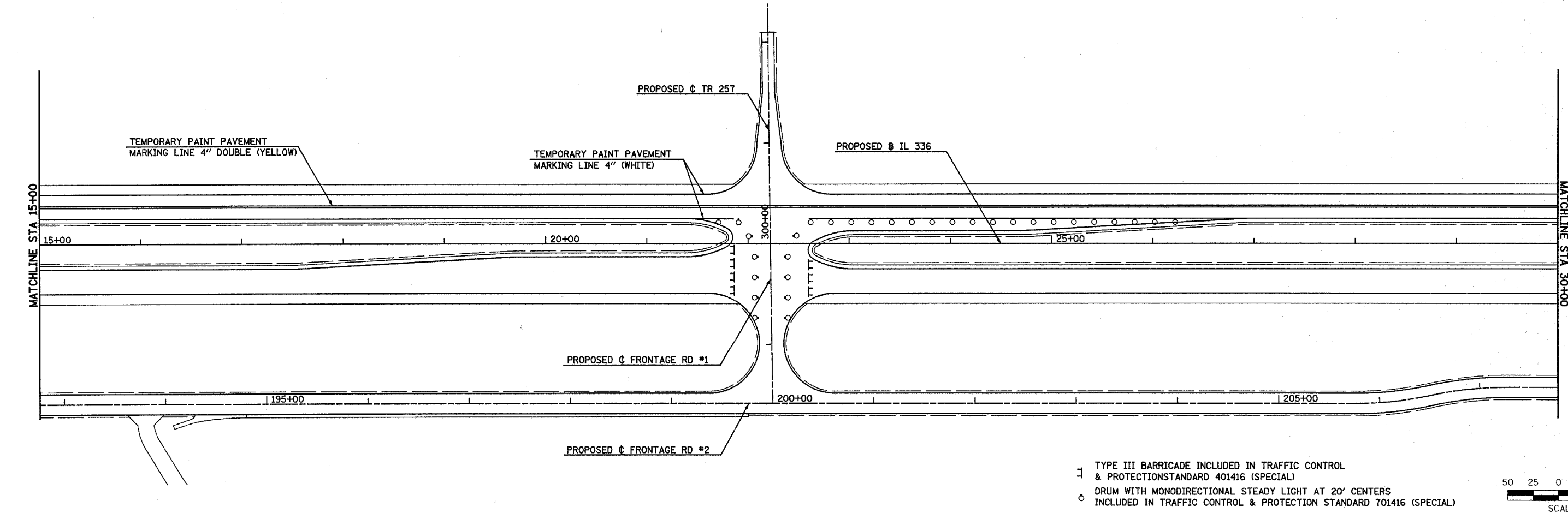
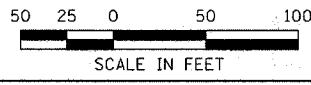


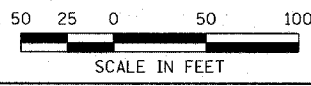
F.A.P. RTE.	SECTION	COUNTY	TOTAL SHEETS	SHEET NO.
315	(34-6,55-1)	HANCOCK/McDONOUGH	433	108
STA. 1+00		TO STA. 30+00		
FED. ROAD DIST. NO.	ILLINOIS	FED. AID PROJECT		STATE CONTRACT NO. 68206



- ① EDGE LINES
TEMPORARY PAINT PAVEMENT
MARKING 4" WHITE
- ② SOLID DOUBLE YELLOW
TEMPORARY PAINT PAVEMENT
MARKING 4" YELLOW



- ▬ TYPE III BARRICADE INCLUDED IN TRAFFIC CONTROL & PROTECTION STANDARD 401416 (SPECIAL)
- DRUM WITH MONODIRECTIONAL STEADY LIGHT AT 20' CENTERS INCLUDED IN TRAFFIC CONTROL & PROTECTION STANDARD 701416 (SPECIAL)



Plot Date: 7/18/2016
 Plot Time: 11:58:11 AM
 Plot Path: C:\Users\Bjorn\AppData\Local\Temp\11001131
 File Name: I:\030333\cd\1\constr\function_plans\079_cas\plan2014.dgn

CONSTRUCTION STAGING (STAGE 2) TEMPORARY PAVEMENT MARKING - FAP ROUTE 315 (IL 336) STA 1+00 TO STA 30+00