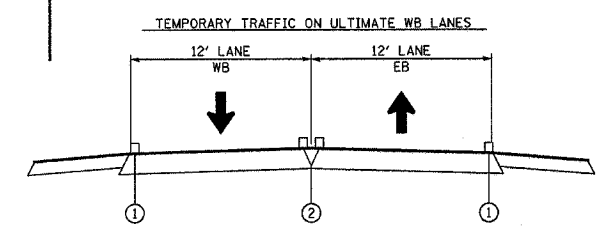
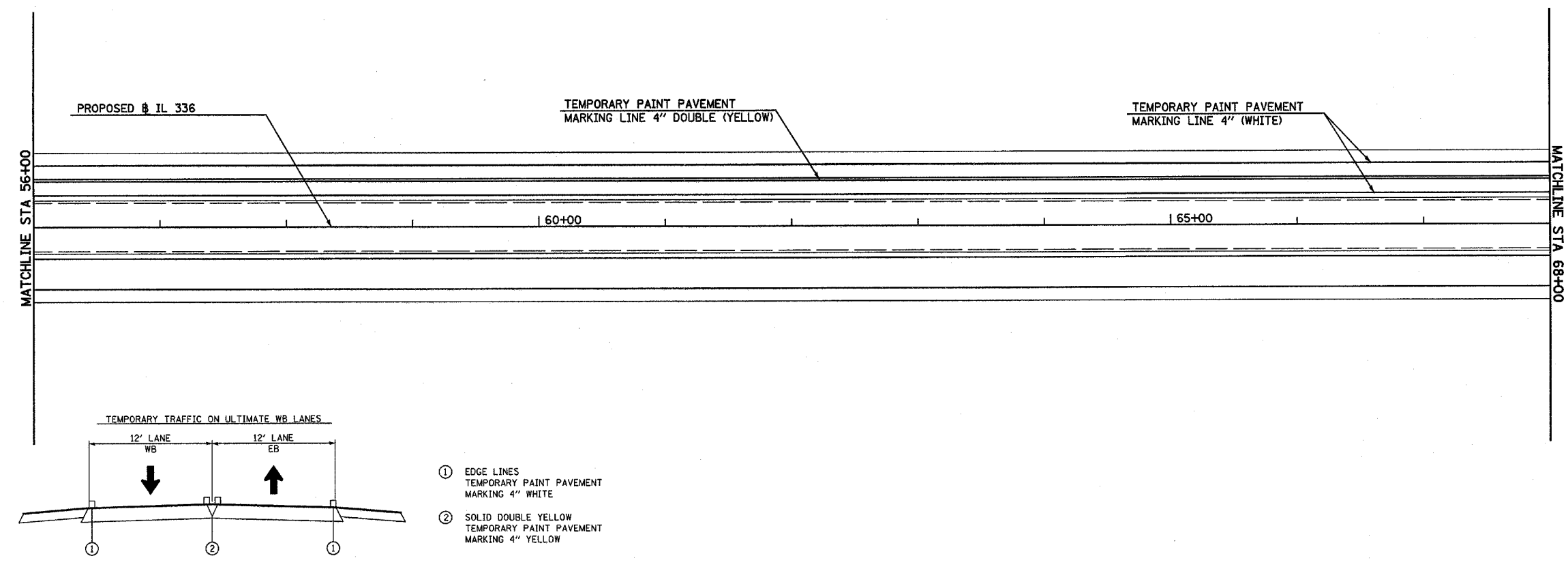
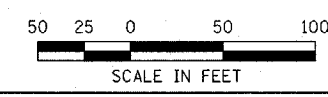
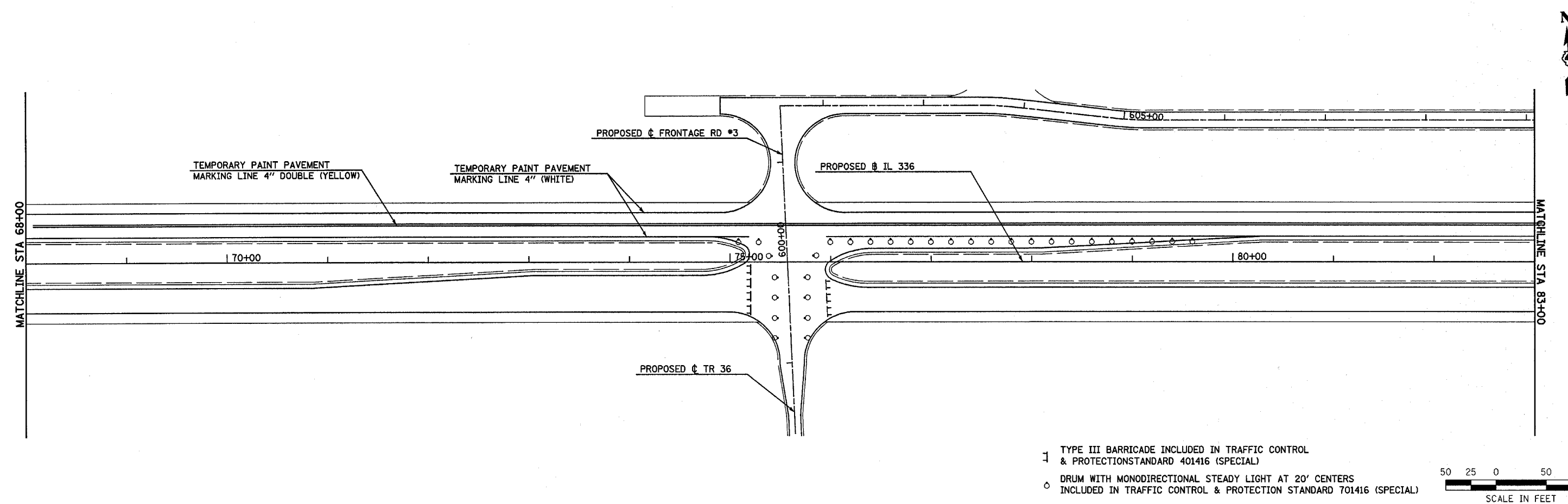
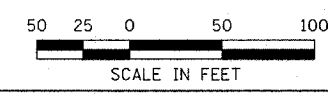
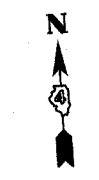


| | | | | |
|--------------------------|-------------|-------------------|--------------|-----------|
| F.A.P. RTE. | SECTION | COUNTY | TOTAL SHEETS | SHEET NO. |
| 315 | (34-6,55-1) | HANCOCK/McDONOUGH | 433 | 111 |
| STA. 56+00 | | TO STA. 83+00 | | |
| FED. ROAD DIST. NO. | ILLINOIS | FED. AID PROJECT | | |
| STATE CONTRACT NO. 68206 | | | | |



- ① EDGE LINES
TEMPORARY PAINT PAVEMENT
MARKING 4" WHITE
- ② SOLID DOUBLE YELLOW
TEMPORARY PAINT PAVEMENT
MARKING 4" YELLOW



- ⊣ TYPE III BARRICADE INCLUDED IN TRAFFIC CONTROL & PROTECTION STANDARD 401416 (SPECIAL)
- DRUM WITH MONODIRECTIONAL STEADY LIGHT AT 20' CENTERS INCLUDED IN TRAFFIC CONTROL & PROTECTION STANDARD 701416 (SPECIAL)

Plot Date: 7/18/2006
 Plot Time: 3:27:37 PM
 Plot Path: C:\Users\Bjorn\Documents\Projects\068206\068206.dwg
 Pen Table: acad.ctb
 File Name: 068206.dwg

CONSTRUCTION STAGING (STAGE 2) TEMPORARY PAVEMENT MARKING - FAP ROUTE 315 (IL 336) STA 56+00 TO STA 83+00