

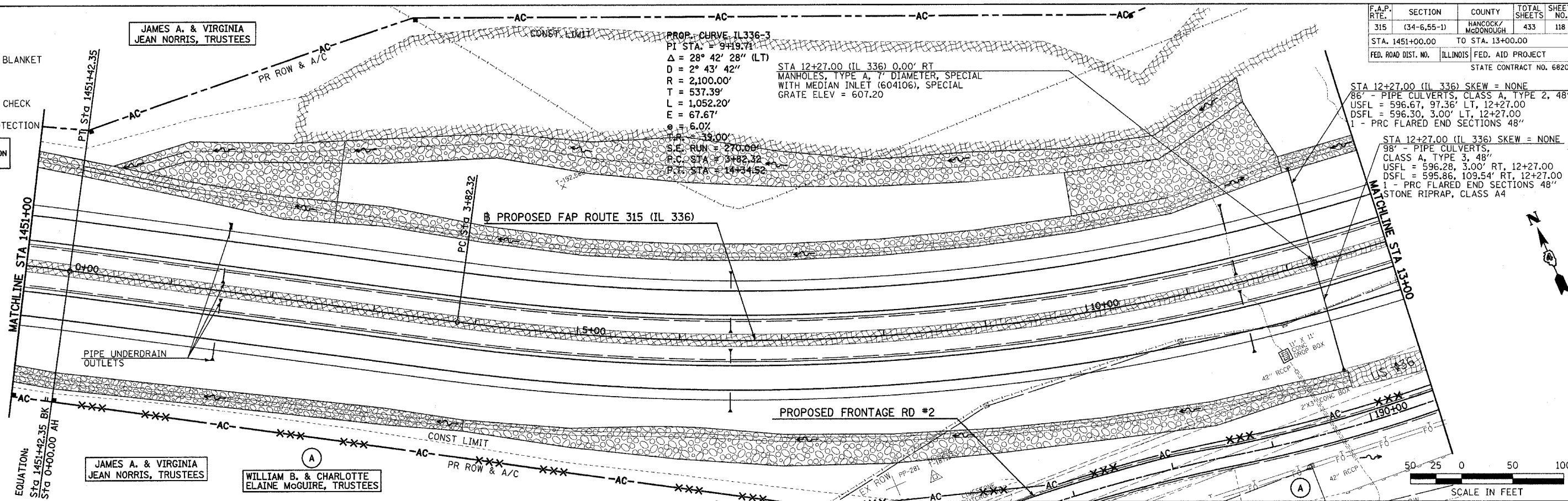
F.A.P. RTE.	SECTION	COUNTY	TOTAL SHEETS	SHEET NO.
315	(34-6.55-1)	HANCOCK/MCDONOUGH	433	118
STA. 1451+00.00 TO STA. 13+00.00		FED. AID PROJECT		
FED. ROAD DIST. NO.		ILLINOIS		
STATE CONTRACT NO. 68206				

- LEGEND**
- STONE RIPRAP
  - EROSION CONTROL BLANKET
  - SEDIMENT BASIN
  - TEMPORARY DITCH CHECK
  - INLET & PIPE PROTECTION
- FOR PIPE UNDERDRAIN OUTLETS LOCATION, OFFSET, AND ELEVATION SEE SCHEDULE OF QUANTITIES

DATE	BY

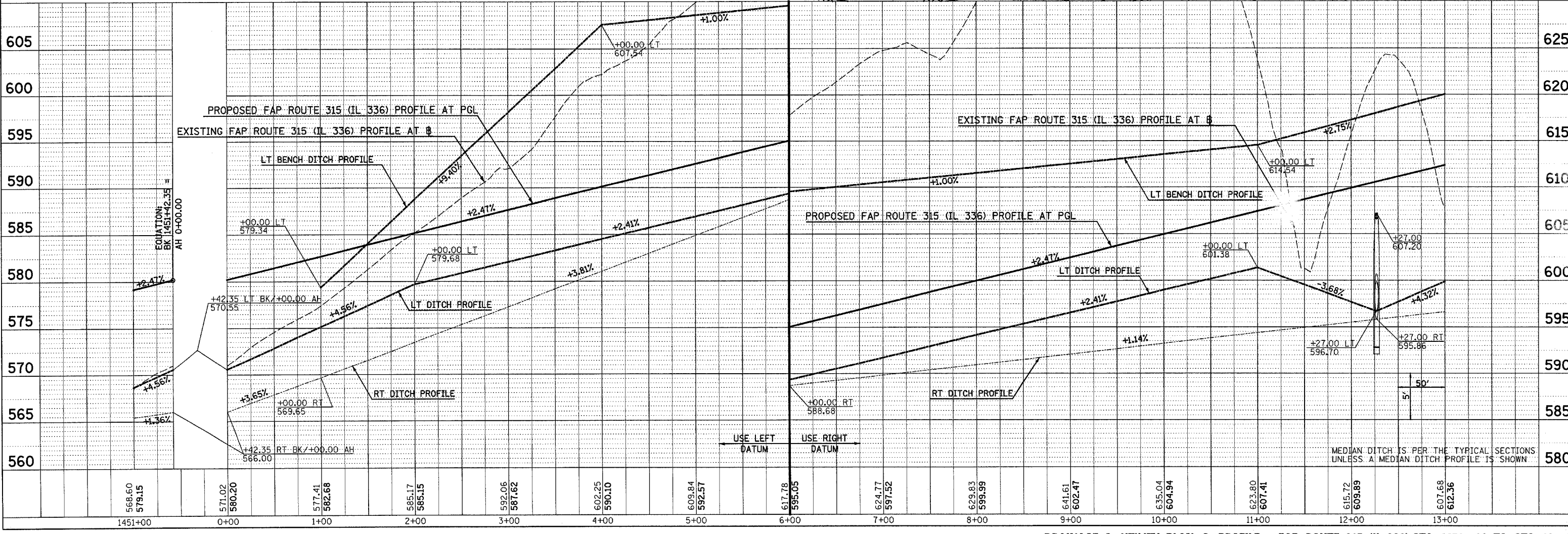
DATE	BY

Plot Date: 8/20/2006  
 Plot Time: 12:47:06 PM  
 Plotted By: sdonohue  
 Para Table: 1001.tbl  
 File Name: I:\030333\cody\1\constr\utility\plans\085\_dudm085.dgn



STA 12+27.00 (IL 336) SKEW = NONE  
 86' - PIPE CULVERTS, CLASS A, TYPE 2, 48"  
 USFL = 596.67, 97.36' LT, 12+27.00  
 DSFL = 596.30, 3.00' LT, 12+27.00  
 1 - PRC FLARED END SECTIONS 48"

STA 12+27.00 (IL 336) SKEW = NONE  
 98' - PIPE CULVERTS, CLASS A, TYPE 3, 48"  
 USFL = 596.28, 3.00' RT, 12+27.00  
 DSFL = 595.86, 109.54' RT, 12+27.00  
 1 - PRC FLARED END SECTIONS 48"  
 STONE RIPRAP, CLASS A4



**DRAINAGE & UTILITY PLAN & PROFILE - FAP ROUTE 315 (IL 336) STA 1451+00 TO STA 13+00**