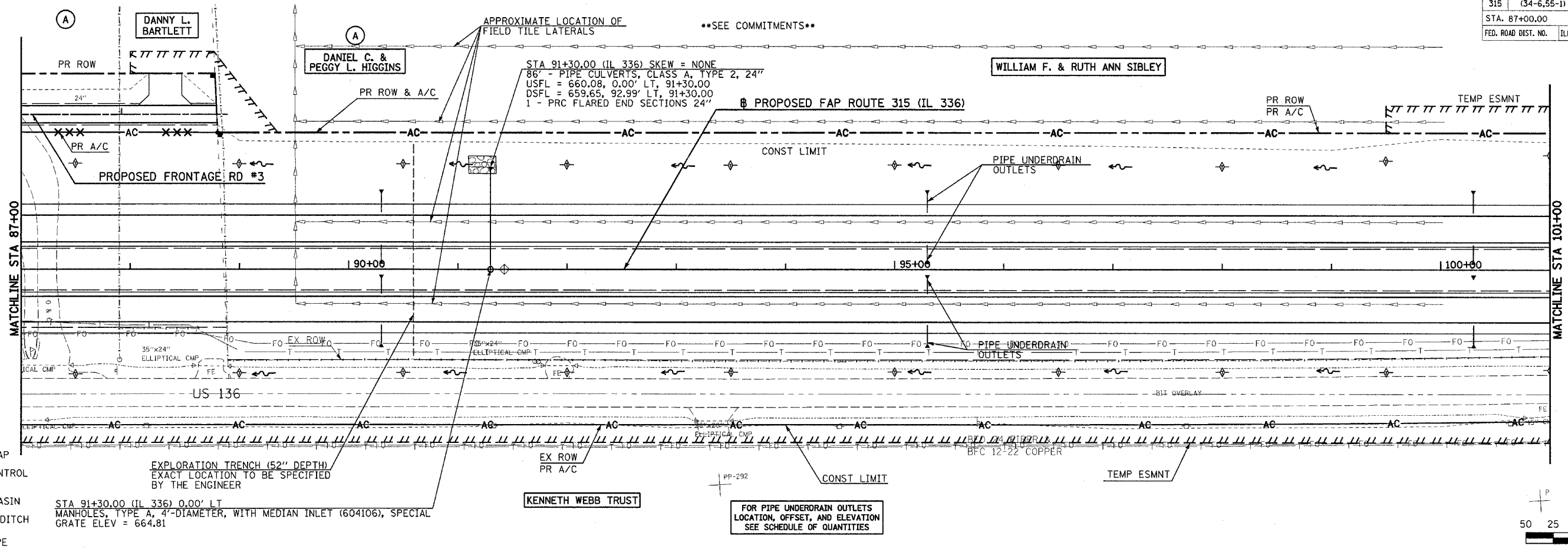


F.A.P. RTE.	SECTION	COUNTY	TOTAL SHEETS	SHEET NO.
315	(34-6,55-1)	HANCOCK/McDONOUGH	433	124
STA. 87+00.00		TO STA. 101+00.00		
FED. ROAD DIST. NO.		ILLINOIS FED. AID PROJECT		
STATE CONTRACT NO. 68206				



PLAN	DATE
DATE	
BY	
CHECKED	
NO.	

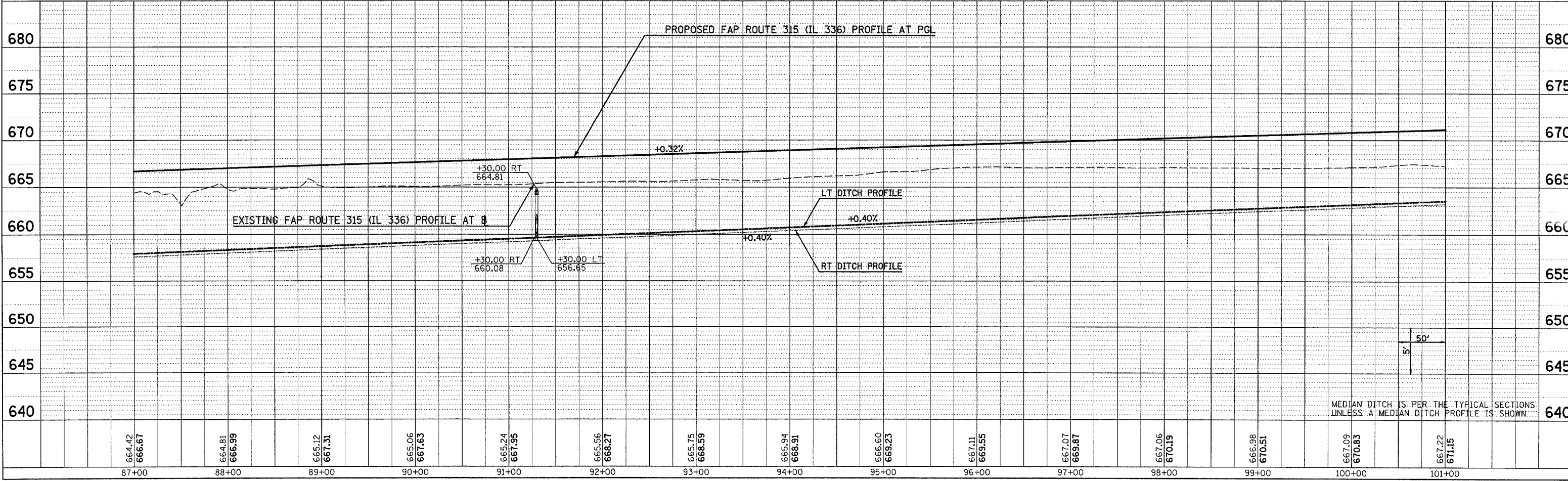
PROFILE	DATE
DATE	
BY	
CHECKED	
NO.	

- LEGEND**
- STONE RIPRAP
  - EROSION CONTROL BLANKET
  - SEDIMENT BASIN
  - TEMPORARY DITCH CHECK
  - INLET & PIPE PROTECTION

EXPLORATION TRENCH (52" DEPTH)  
EXACT LOCATION TO BE SPECIFIED BY THE ENGINEER

STA 91+30.00 (IL 336) 0.00' LT  
MANHOLES, TYPE A, 4'-DIAMETER, WITH MEDIAN INLET (604106), SPECIAL GRATE ELEV = 664.81

FOR PIPE UNDERDRAIN OUTLETS LOCATION, OFFSET, AND ELEVATION SEE SCHEDULE OF QUANTITIES



Pict Date: 8/20/2005  
Plot Time: 10:47:16 PM  
Plot By: scc@pue  
Plan Tables: 1001.tbl  
Filename: I:\020233\constr\utility\plans\095\_dummetr.dgn

**DRAINAGE & UTILITY PLAN & PROFILE - FAP ROUTE 315 (IL 336) STA 87+00 TO STA 101+00**