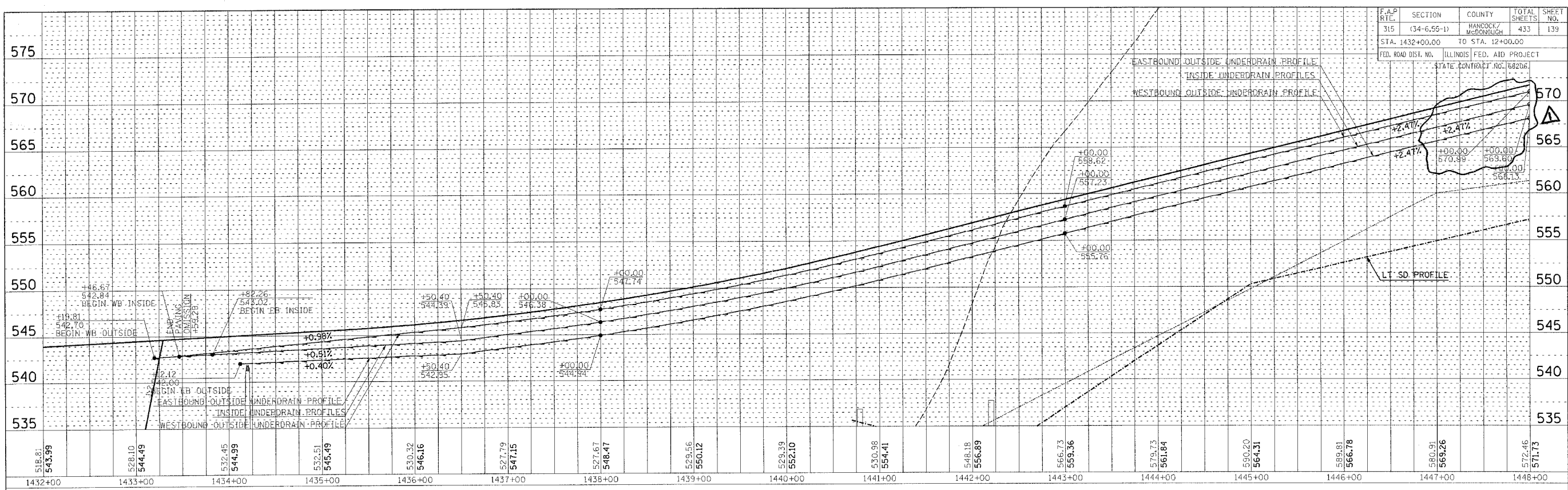
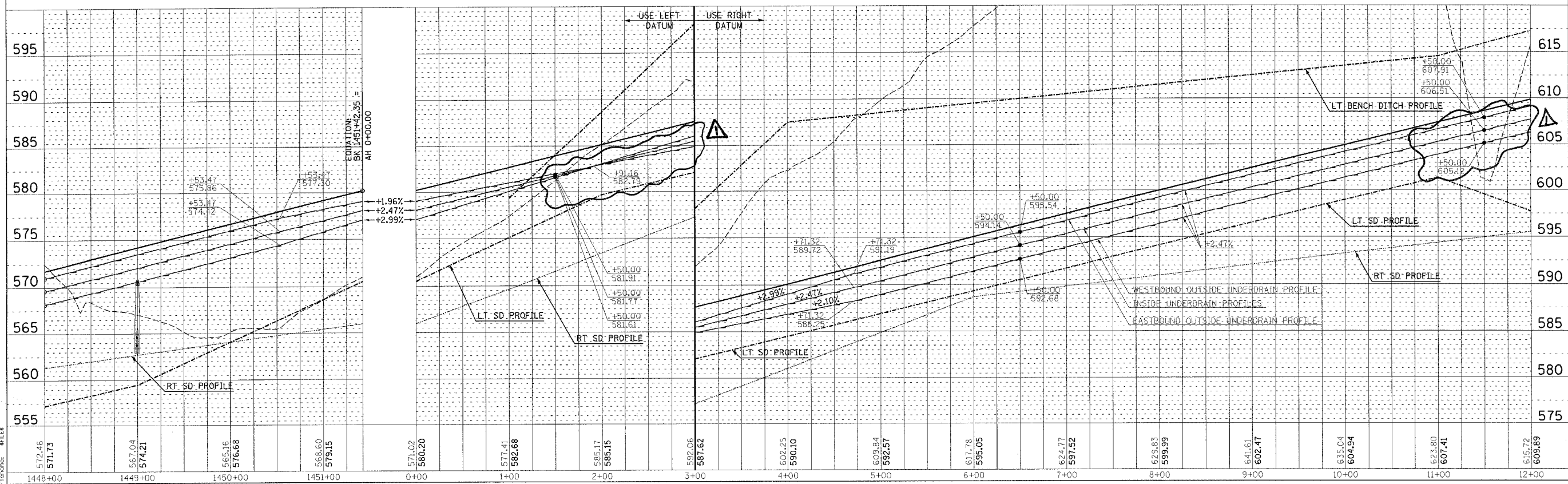


F.A.P. RTCL	SECTION	COUNTY	TOTAL SHEETS	SHEET NO.
315	(34-6,55-1)	HANCOCK/McDONOUGH	433	139
STA. 1432+00.00		TO STA. 12+00.00		
FED. ROAD DIST. NO.		ILLINOIS FED. AID PROJECT		
		STATE CONTRACT NO. 68206		

PLAN  
 REVISIONS  
 DATE  
 BY  
 NO. 1  
 NO. 2  
 NO. 3  
 NO. 4  
 NO. 5  
 NO. 6  
 NO. 7  
 NO. 8  
 NO. 9  
 NO. 10  
 NO. 11  
 NO. 12  
 NO. 13  
 NO. 14  
 NO. 15  
 NO. 16  
 NO. 17  
 NO. 18  
 NO. 19  
 NO. 20  
 NO. 21  
 NO. 22  
 NO. 23  
 NO. 24  
 NO. 25  
 NO. 26  
 NO. 27  
 NO. 28  
 NO. 29  
 NO. 30  
 NO. 31  
 NO. 32  
 NO. 33  
 NO. 34  
 NO. 35  
 NO. 36  
 NO. 37  
 NO. 38  
 NO. 39  
 NO. 40  
 NO. 41  
 NO. 42  
 NO. 43  
 NO. 44  
 NO. 45  
 NO. 46  
 NO. 47  
 NO. 48  
 NO. 49  
 NO. 50  
 NO. 51  
 NO. 52  
 NO. 53  
 NO. 54  
 NO. 55  
 NO. 56  
 NO. 57  
 NO. 58  
 NO. 59  
 NO. 60  
 NO. 61  
 NO. 62  
 NO. 63  
 NO. 64  
 NO. 65  
 NO. 66  
 NO. 67  
 NO. 68  
 NO. 69  
 NO. 70  
 NO. 71  
 NO. 72  
 NO. 73  
 NO. 74  
 NO. 75  
 NO. 76  
 NO. 77  
 NO. 78  
 NO. 79  
 NO. 80  
 NO. 81  
 NO. 82  
 NO. 83  
 NO. 84  
 NO. 85  
 NO. 86  
 NO. 87  
 NO. 88  
 NO. 89  
 NO. 90  
 NO. 91  
 NO. 92  
 NO. 93  
 NO. 94  
 NO. 95  
 NO. 96  
 NO. 97  
 NO. 98  
 NO. 99  
 NO. 100



PROFILE  
 DATE  
 BY  
 NO. 1  
 NO. 2  
 NO. 3  
 NO. 4  
 NO. 5  
 NO. 6  
 NO. 7  
 NO. 8  
 NO. 9  
 NO. 10  
 NO. 11  
 NO. 12  
 NO. 13  
 NO. 14  
 NO. 15  
 NO. 16  
 NO. 17  
 NO. 18  
 NO. 19  
 NO. 20  
 NO. 21  
 NO. 22  
 NO. 23  
 NO. 24  
 NO. 25  
 NO. 26  
 NO. 27  
 NO. 28  
 NO. 29  
 NO. 30  
 NO. 31  
 NO. 32  
 NO. 33  
 NO. 34  
 NO. 35  
 NO. 36  
 NO. 37  
 NO. 38  
 NO. 39  
 NO. 40  
 NO. 41  
 NO. 42  
 NO. 43  
 NO. 44  
 NO. 45  
 NO. 46  
 NO. 47  
 NO. 48  
 NO. 49  
 NO. 50  
 NO. 51  
 NO. 52  
 NO. 53  
 NO. 54  
 NO. 55  
 NO. 56  
 NO. 57  
 NO. 58  
 NO. 59  
 NO. 60  
 NO. 61  
 NO. 62  
 NO. 63  
 NO. 64  
 NO. 65  
 NO. 66  
 NO. 67  
 NO. 68  
 NO. 69  
 NO. 70  
 NO. 71  
 NO. 72  
 NO. 73  
 NO. 74  
 NO. 75  
 NO. 76  
 NO. 77  
 NO. 78  
 NO. 79  
 NO. 80  
 NO. 81  
 NO. 82  
 NO. 83  
 NO. 84  
 NO. 85  
 NO. 86  
 NO. 87  
 NO. 88  
 NO. 89  
 NO. 90  
 NO. 91  
 NO. 92  
 NO. 93  
 NO. 94  
 NO. 95  
 NO. 96  
 NO. 97  
 NO. 98  
 NO. 99  
 NO. 100



\$\$\$ FAP 315 (IL 336) PIPE UNDERDRAIN PROFILES - STA 1432+00.00 TO STA 12+00.00  
 Δ REVISED 11/106