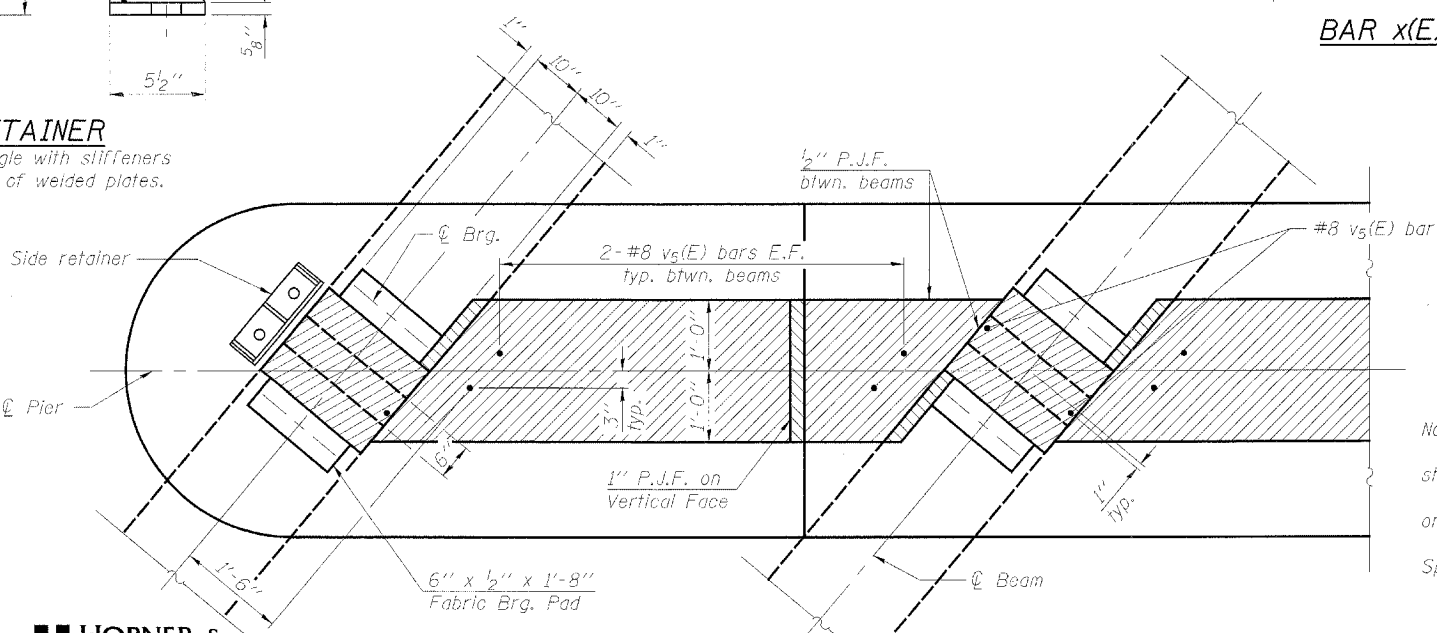
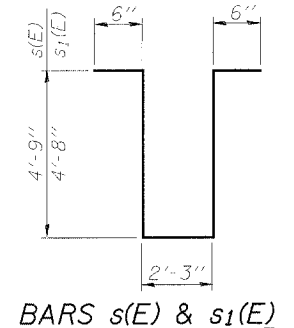
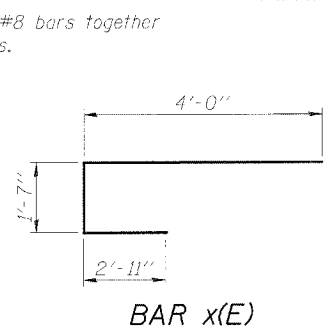
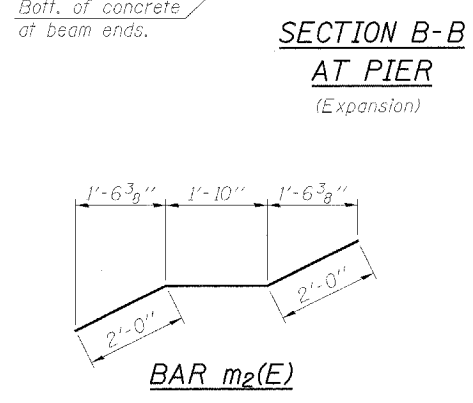
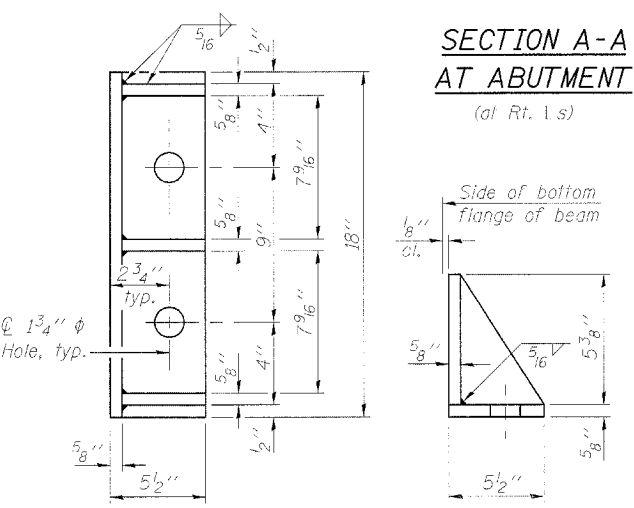
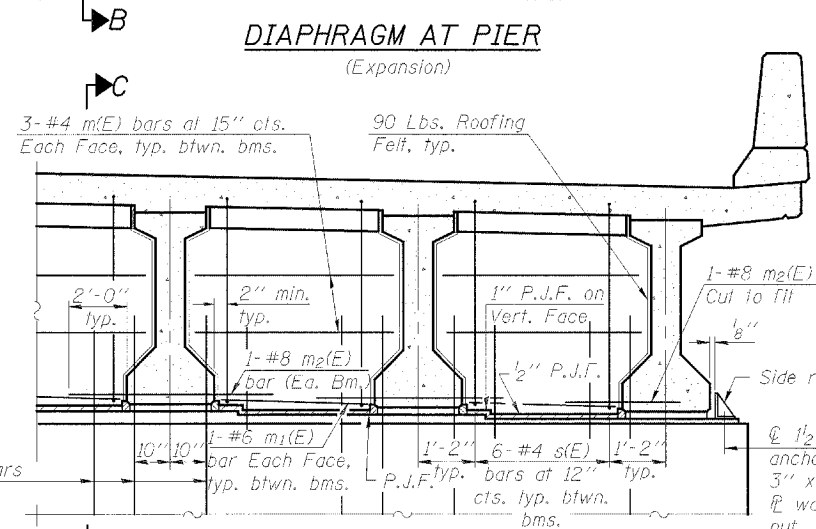
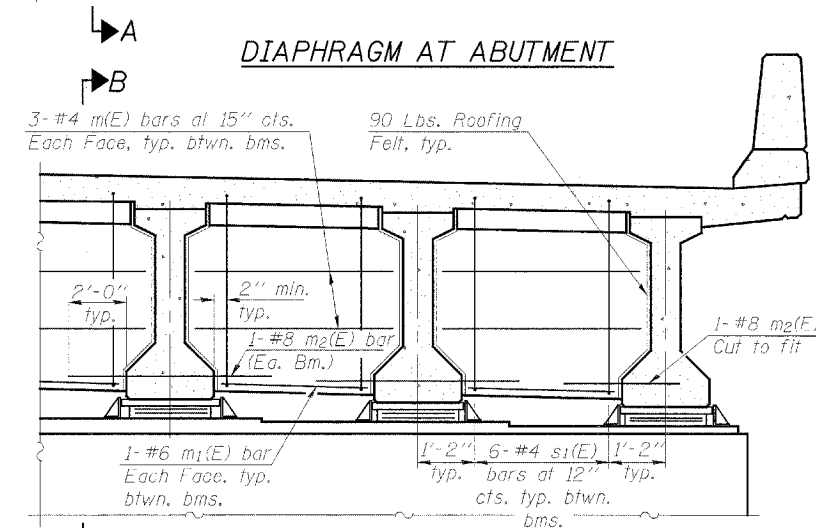
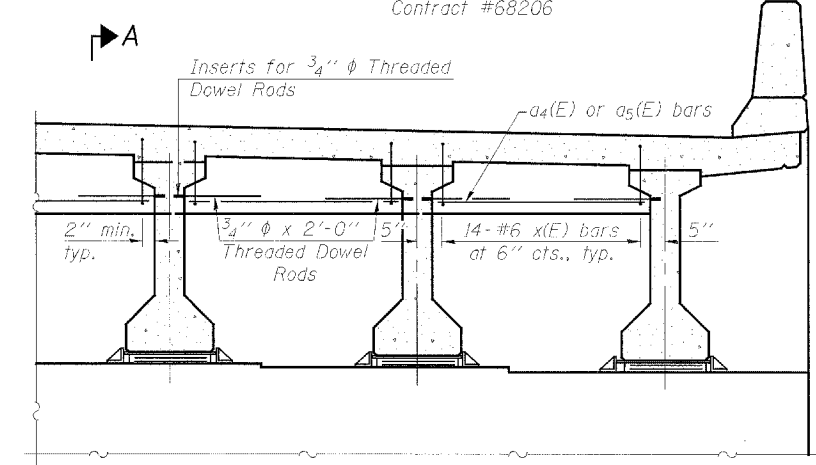
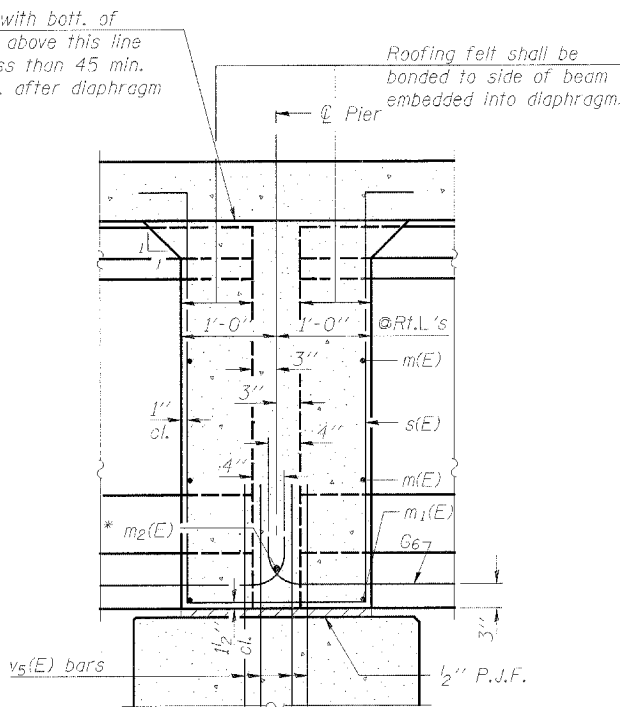
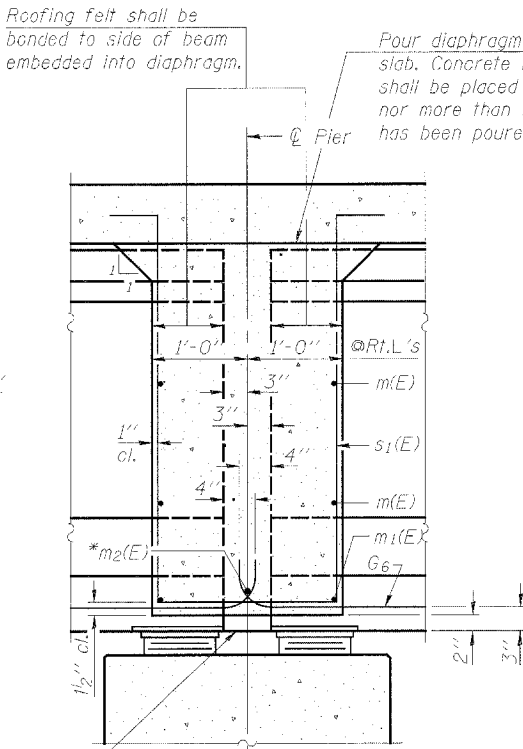
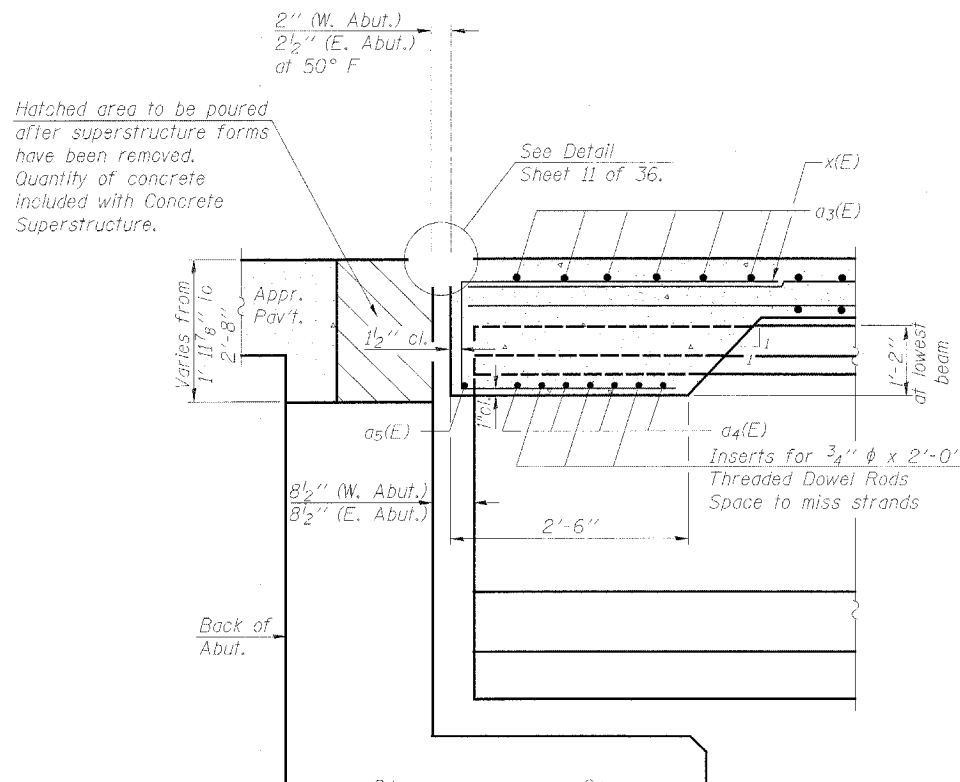


STATE OF ILLINOIS
DEPARTMENT OF TRANSPORTATION

ROUTE NO.	SECTION	COUNTY	TOTAL SHEETS	SHEET NO.
F.A.P. 315	34-6, 55-1	HANCOCK	433	208
FED. ROAD DIST. NO. 7		ILLINOIS	FED. AID PROJECT	

SHEET NO. 10
36 SHEETS

Contract #68206



*Tightly fasten the #8 bars together with No. 9 wire ties.

Notes:
Reinforcement bars in diaphragm are billed with superstructure on sheet 9 of 36.
Concrete in diaphragm is included with Concrete Superstructure on sheet 9 of 36.
The $s(E)$, $s_1(E)$ and $x(E)$ bars shall be placed parallel to the beams. Spacing for these bars shall be at right angles to the beams.
Cost of 90 Lb. roofing felt is included with Concrete Superstructure. See sheet 20 of 36 for anchor bolt details.
Horizontal dimensions for Sec. B-B and Sec. C-C are along ϕ of beam unless otherwise noted.
The $v_5(E)$ bars are billed with substructure on sheets 27 and 28 of 36.

DESIGNED	KLH
CHECKED	FMI
DRAWN	KB/EML
CHECKED	KLH

HORNER & SHIFRIN, INC.
ENGINEERS ■ ARCHITECTS ■ PLANNERS

SUPERSTRUCTURE DETAILS III
ILLINOIS ROUTE 336 OVER
EAST FORK OF THE LAMOINE RIVER
F.A.P. ROUTE 315 - SECTION 34-6, 55-1
HANCOCK COUNTY; STA. 1432+02.61
STRUCTURE NO. 034-0511 (E.B.)
STRUCTURE NO. 034-0512 (W.B.)