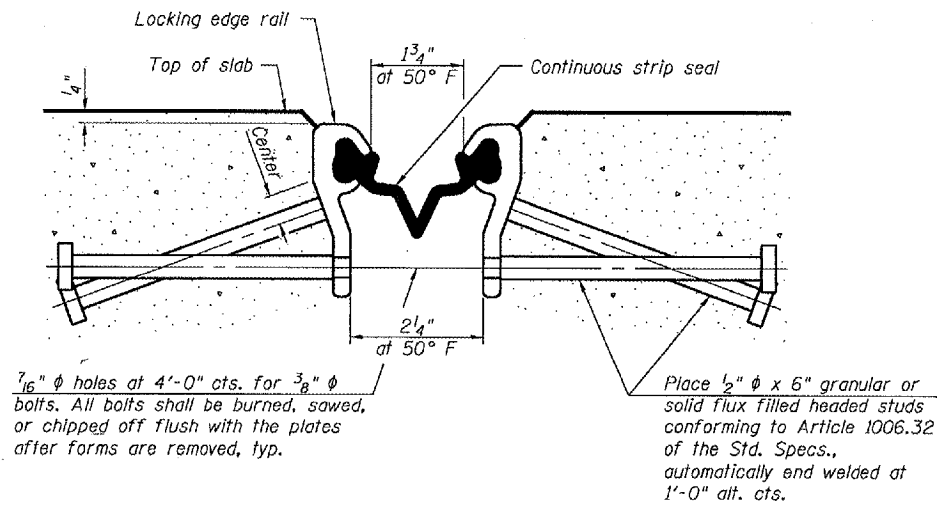


STATE OF ILLINOIS
DEPARTMENT OF TRANSPORTATION

ROUTE NO.	SECTION	COUNTY	TOTAL SHEETS	SHEET NO.	SHEET NO. 6 10 SHEETS
		Tazewell	29	17	
FED. ROAD DIST. NO. 7	ILLINOIS	FED. AID PROJECT			

Contract Number: 68484

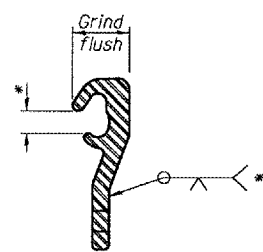
*Omit weld at seal opening.



**SECTION THRU STRIP SEAL JOINT
FOR OVERLAY OVER DECK BEAMS**



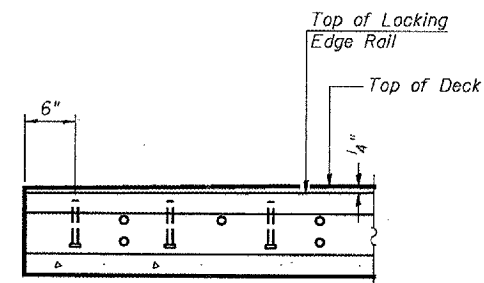
LOCKING EDGE RAIL



LOCKING EDGE RAIL SPLICE

Notes:

The strip seal shall be made continuous and shall have a minimum thickness of 1/4". The configuration of the strip seal shall match the configuration of the Locking Edge Rails. Open or "webbed" strip seal gland configurations are not permitted. The gland shall be sized for a maximum rated movement of 4 inches. The height and thickness of the Locking Edge Rails shown are minimum dimensions. The actual configuration of the Locking Edge Rails and matching strip seal may vary from manufacturer to manufacturer. Flanged edge rails will not be allowed. Locking Edge Rails may be spliced at slope discontinuities and stage construction joints. The manufacturer's recommended installation methods shall be followed. The joint opening and deck dimensions detailed on the superstructure are based on a rolled rail expansion joint. All steel components shall be galvanized after fabrication according to Article 520.03 of the Standard Specifications. The inside of the Locking Edge Rail groove shall be free of weld residue.



TYPICAL END TREATMENT

BILL OF MATERIAL

Item	Unit	Total
Preformed Joint Strip Seal	Foot	40

DESIGNED	P.S.J.
CHECKED	S.J.B.
DRAWN	Drew Christopher
CHECKED	P.S.J. S.J.B.

December 8, 2006
 EXAMINED *John A. Morris*
 ENGINEER OF STRUCTURAL SERVICES
 PASSED *Ralph E. Anderson*
 ENGINEER OF BRIDGES AND STRUCTURES

STRIP SEAL JOINT DETAILS
IL 122 / SUGAR CREEK
TAZEWELL COUNTY
SN 090-0058