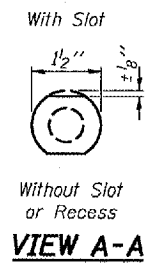
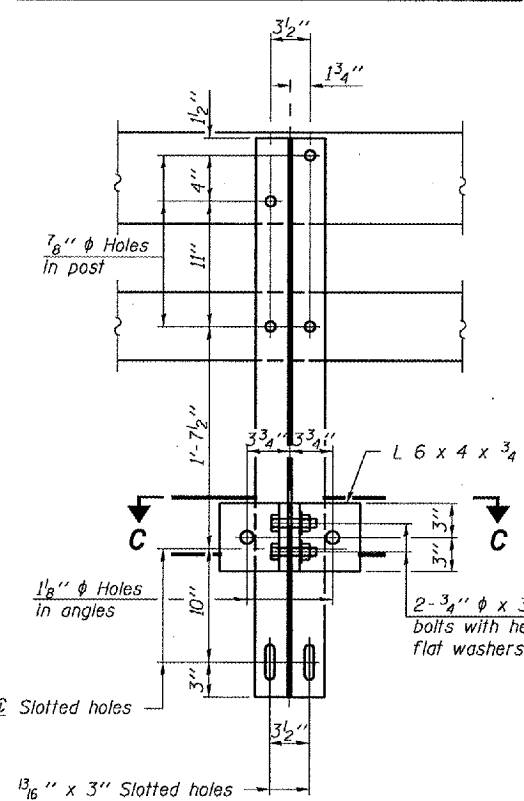


STATE OF ILLINOIS
DEPARTMENT OF TRANSPORTATION

ROUTE NO.	SECTION	COUNTY	TOTAL SHEETS	SHEET NO.
		Tazewell	29	18
FED. ROAD DIST. NO.	ILLINOIS	FED. AID PROJECT		

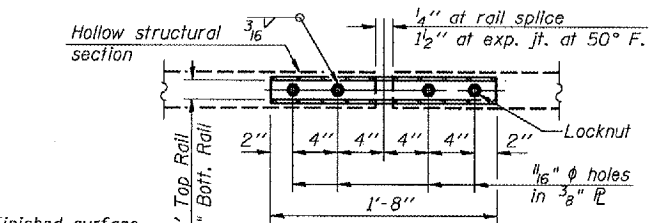
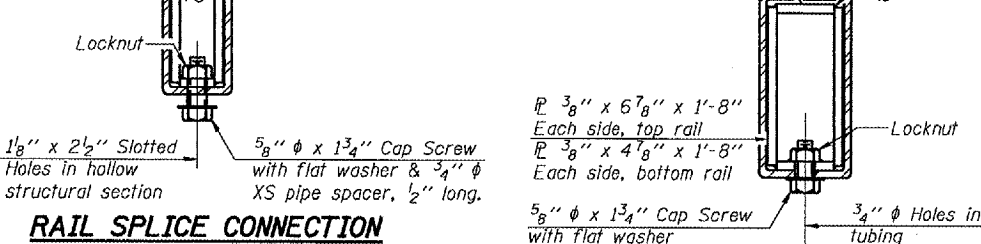
Contract Number: 68484

DETAIL OF 3/4" φ ROUND HEAD BOLT



4-3/4" φ x 6" Round Head Bolts (With slot or approved recess in head) with locknut & flat washer. 7/8" φ holes in hollow structural section may be drilled in the field.

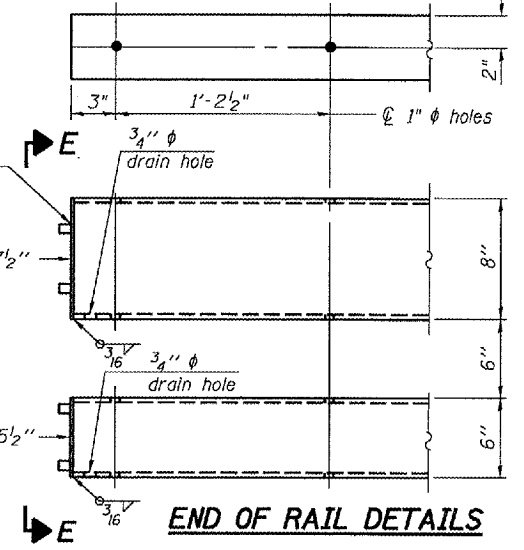
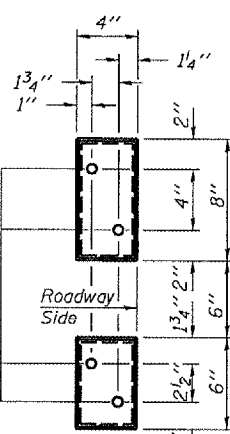
RAIL SPLICE CONNECTION AT EXPANSION JT.



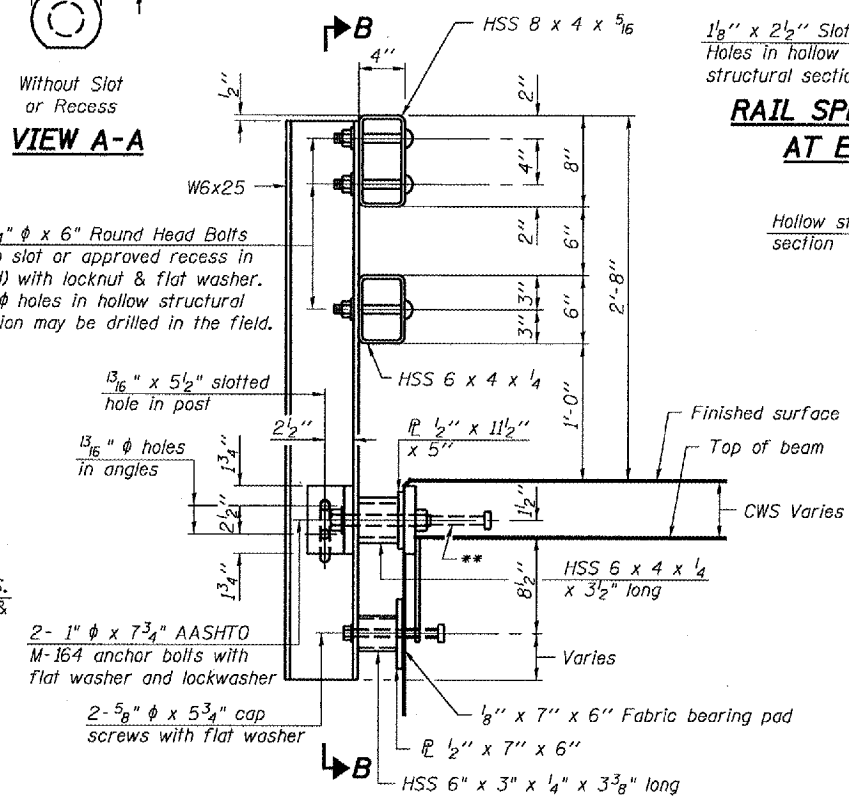
PLAN-BOTT. SPLICE P TYPICAL

5/8" reduced base welded studs. Provide 4-5/8" washers and self-locking nuts or nuts and jam nuts for guardrail connection shown on Std. 631032

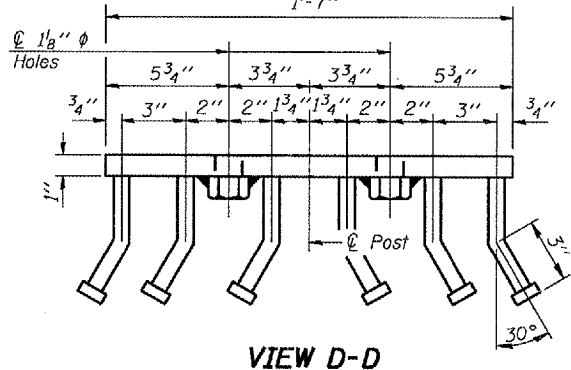
SECTION AT RAIL SPLICE



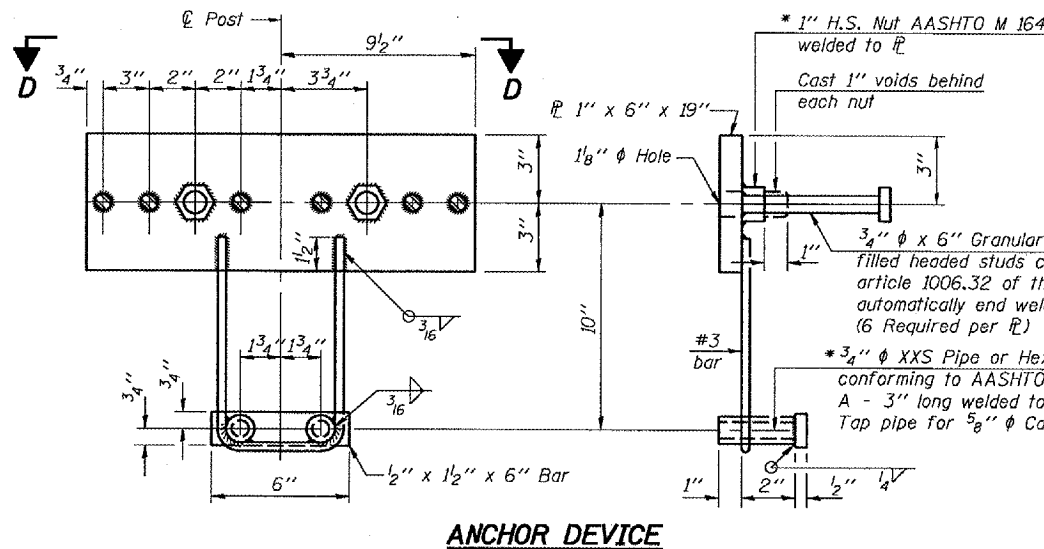
END OF RAIL DETAILS



SECTION AT RAIL POST

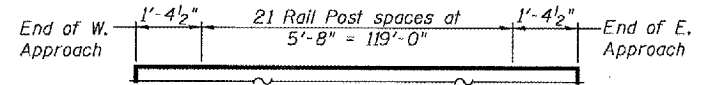


VIEW D-D



ANCHOR DEVICE

Notes:
All field drilled holes shall be coated with an approved zinc rich paint before erection.
For multi-span bridges, sufficient 1/4" x 6" x 1'-2" galvanized steel shims shall be provided to align rail between adjacent spans. Cost included with Steel Bridge Rail, Type SM.
Steel rail elements shall be galvanized according to Article 509.05 of the Standard Specifications.
** The studs of the anchor devices shall be placed below the top reinforcement bars and the outermost longitudinal reinforcement bar shall be placed directly above the studs of the rail post anchor device.



RAIL POST SPACING

BILL OF MATERIAL

Item	Unit	Quantity
Steel Railing, Type SM	Foot	244

STEEL RAILING, TYPE SM
WITH CONCRETE WEARING SURFACE
BRIDGE RAILING DETAILS
IL 122 / SUGAR CREEK
TAZEWELL COUNTY
SN 090-0058

DESIGNED P.S.J.
CHECKED S.J.B.
DRAWN Drew Christopher
CHECKED P.S.J. S.J.B.
R-34CWS

December 8, 2006
EXAMINED John A. Morris
PASSED Ralph E. Anderson

11-1-06 (6'-3" Maximum Post Spacing) (5" minimum to 7 1/8" maximum CWS thickness)

* Threaded areas shall be plugged or blocked off during casting of beam. Galvanized after fabrication.