



# Illinois Department of Transportation

2300 South Dirksen Parkway / Springfield, Illinois / 62764

January 5, 2007

SUBJECT: FAP Route 317 (US 150)  
Section D4 Drainage Improvement 2007-1  
Peoria County  
Contract No. 68542  
Item No. 39, January 19, 2007 Letting  
Addendum A

## NOTICE TO PROSPECTIVE BIDDERS:

Attached is an addendum to the plans or proposal. This addendum involves revised and/or added material.

1. Added sheets 26A to 26D to the Fold Up Plans.

Prime contractors must utilize the enclosed material when preparing their bid and must include any Schedule of Prices changes in their bidding proposal.

Bidders using computer-generated bids are cautioned to reflect any and all Schedule of Prices changes, if involved, into their computer programs.

Very truly yours,

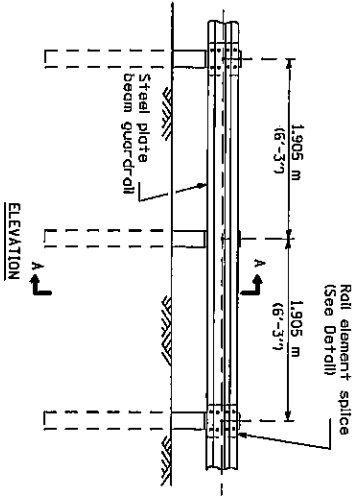
Eric E. Harm  
Interim Bureau Chief  
Bureau of Design and Environment

A handwritten signature in cursive script, reading "Ted B. Walschleger P.E.", with a small "P.E." to the right.

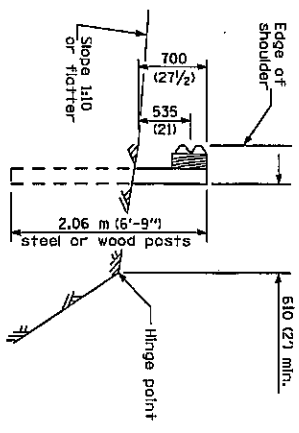
By: Ted B. Walschleger, P. E.  
Engineer of Project Management

cc: J. E. Crowe, Region 3, District 4; Roger Driskell; Estimates; Design & Environment File

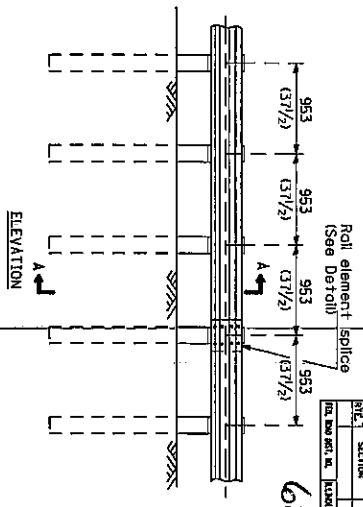
TBW:RS:jc



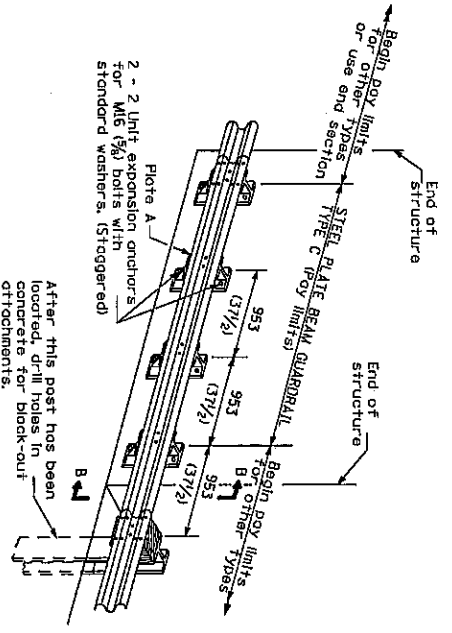
**TYPE A**  
1,905 m (6'-3") Typical post spacing



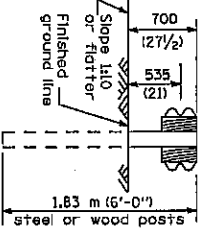
SECTION A-A



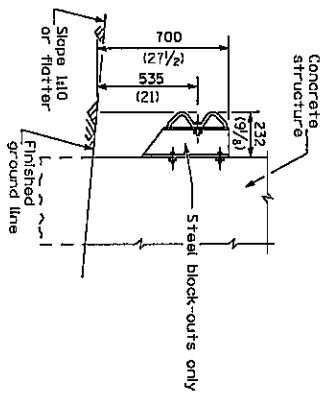
**TYPE B**  
953 (31 1/2) Closed post spacing



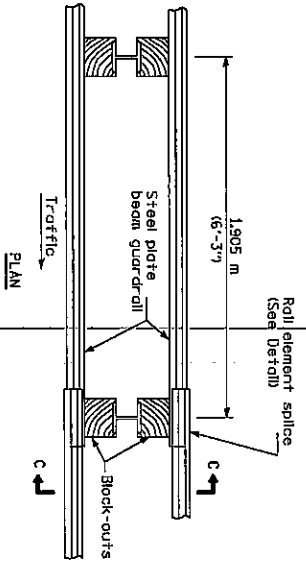
**TYPE C**  
953 (31 1/2) Block-out spacing



SECTION C-C



SECTION B-B



**TYPE D**  
Double steel plate beam guardrail  
1,905 m (6'-3") Typical post spacing

**GENERAL NOTES**

All slope ratios are expressed as units of vertical displacement to units of horizontal displacement (V:H), unless otherwise shown.

All dimensions are in millimeters (inches) unless otherwise shown.

The existing steel posts may be drilled to match the bolt pattern shown herein for the wood block-out, or a new steel post shall be provided.

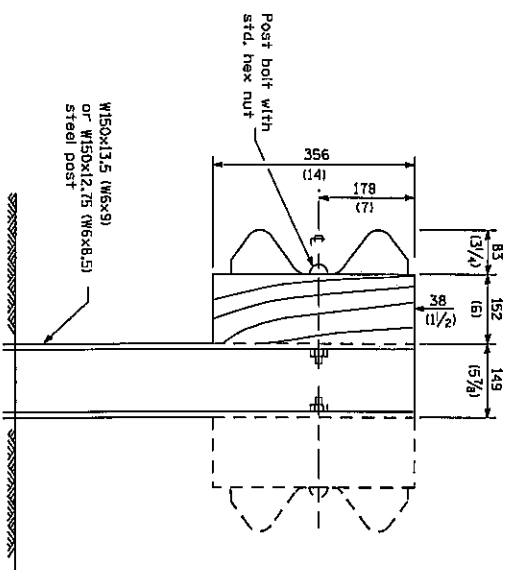
**REMOVE AND REERECT  
STEEL PLATE BEAM GUARDRAIL**

**DETAIL**

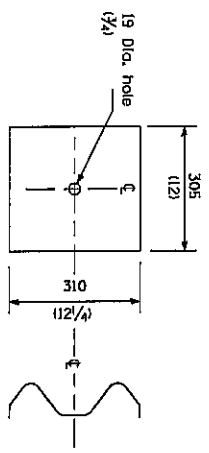
SHEET NO.	SECTION	COUNT	TOTAL SHEETS
68542			3/4

Added 01-04-2007

DATE	SECTION	CONTRACT	PROJECT
1/18	108547		
SHEET NO.	TOTAL SHEETS		
2	4		



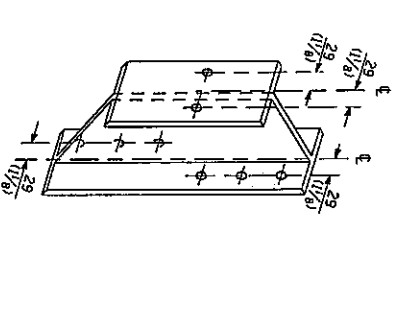
**STEEL POST CONSTRUCTION**



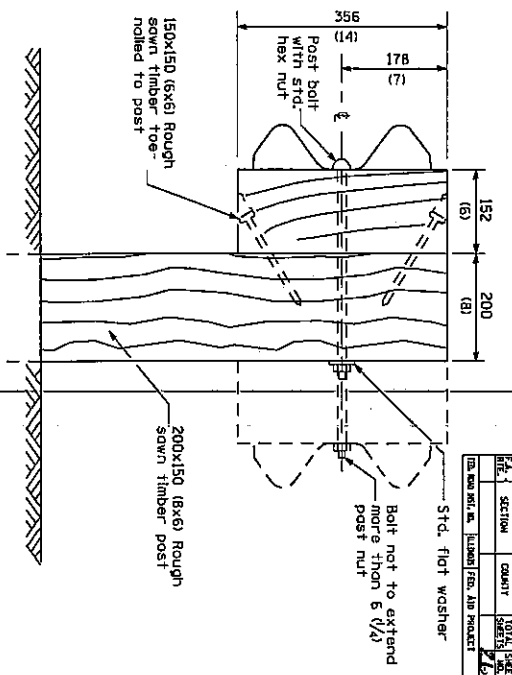
NOTE

Plate A shall be placed between rail element and block-out at non-splice mounting points only when steel block-outs are used.

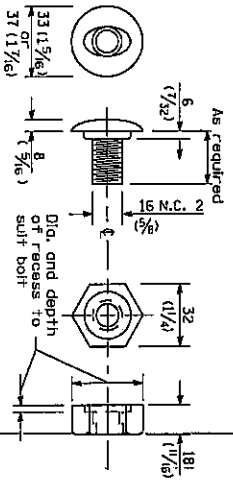
**PLATE A**



**STEEL BLOCK-OUT DETAIL**



**WOOD POST CONSTRUCTION**



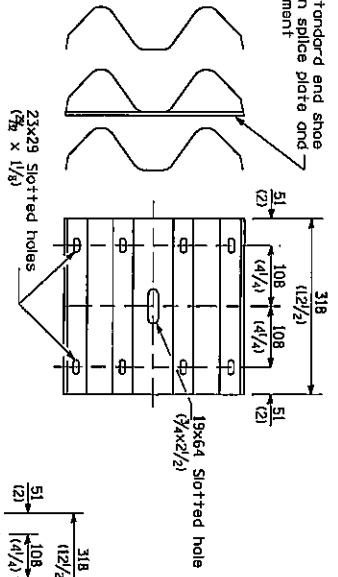
**POST OR SPLICE BOLT & NUT**

**REMOVE AND REERECT  
STEEL PLATE BEAM GUARDRAIL**  
(Sheet 2 of 4)

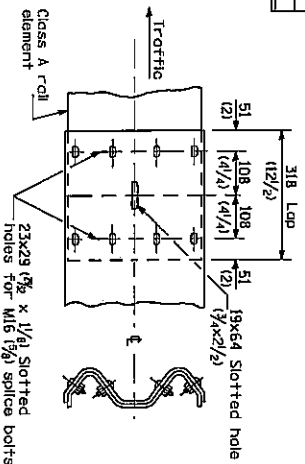
**DETAIL**

Δ - Added 01-04-2007

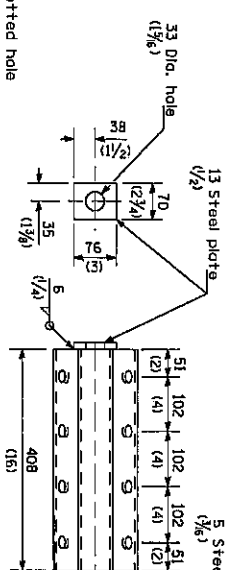
Place standard end shoe  
between splice plate and  
roll element



**SPLICE PLATE**

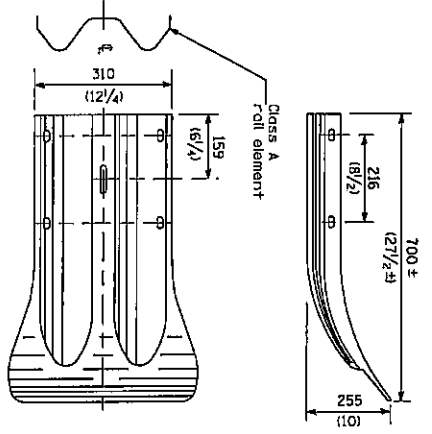


**RAIL ELEMENT SPLICE**

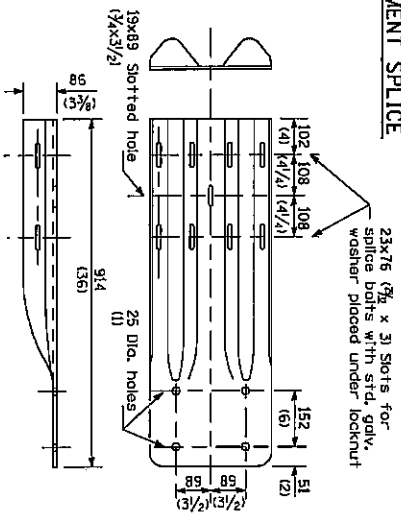


**ANCHOR PLATE I DETAILS**

NOTE  
Anchor plate I shall be used to attach  
cable assembly to quardroll when required  
on traffic barrier terminals.



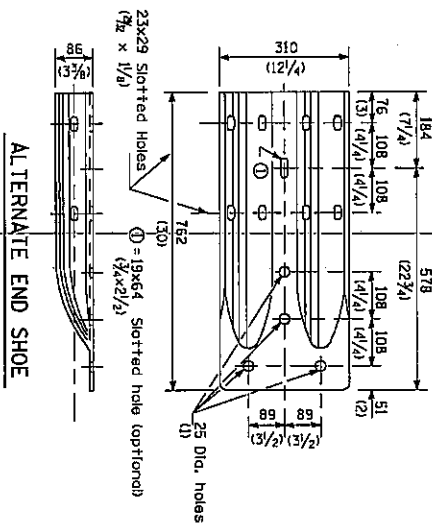
**END SECTION**



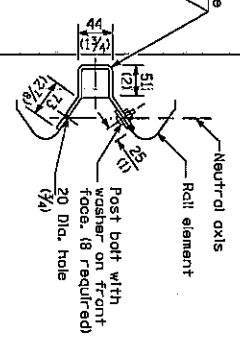
**NOTE**

When end shoe is attached to a bridge parapet which has an expansion  
joint, the bolts shall be provided with a locknut or double nut and shall  
be tightened only to a point that will allow quardroll movement.  
The standard end shoe shall be attached to the concrete with pre-drilled  
or self-drilling anchor bolts. The anchor come shall be set flush with  
the surface of the concrete.  
Externely threaded studs protruding from the surface of the concrete  
will not be permitted.

**END SHOE**



**ALTERNATE END SHOE**



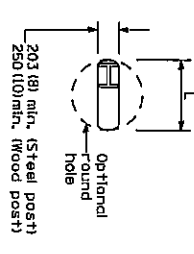
**REMOVE AND REERECT  
STEEL PLATE BEAM GUARDRAIL**

**DETAIL**

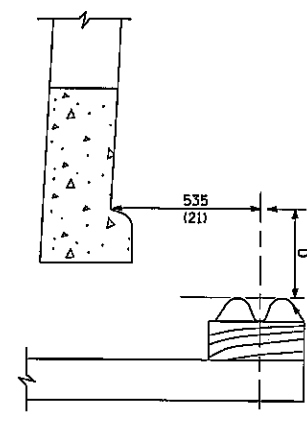
68542	DATE	REVISION	BY

Added 01-04-2007

68542					
SECTION	COUNTRY	DATE	SCALE	BY	CHECK
FOR THE ARCHITECT	ILLUSTRATED PROJECT	ZL	D		

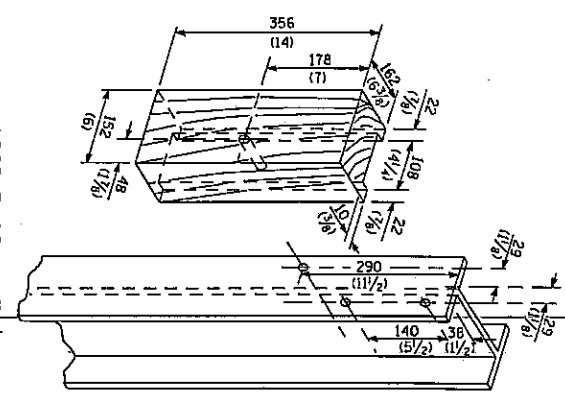


PLAN

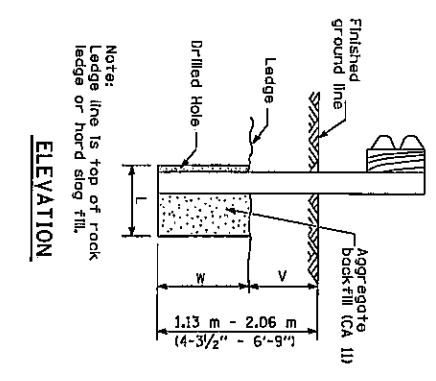


Note:  
If it is necessary for D to be more than 300 (12) and less than 330 m (10'-0"), type M-5 (M-2) and scatter (S1d, 605001) shall be used in front of and in advance of the quadrant.

GUARDRAIL PLACED BEHIND CURB  
(D = 0 desirable to 300 (12) maximum)



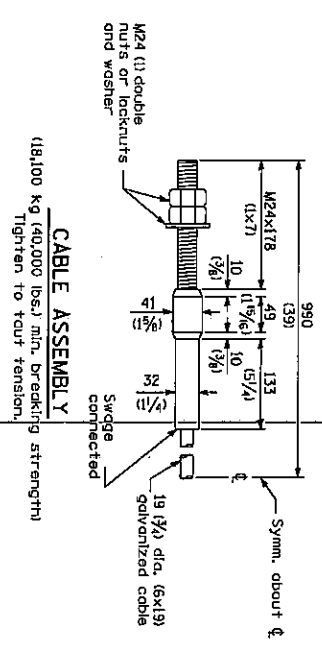
WOOD BLOCK-OUT AND STEEL POST DETAILS



ELEVATION

FOOTING FOR POST WHEN IMPERVIOUS MATERIAL IS ENCOUNTERED

V	W	L	
		Steel Post	Wood Post
0 - 460 (0 - 18)	610 (24)	530 (21)	580 (23)
3460 - 825 (118 - 41.5)	305 (12)	203 (8)	250 (10)
3825 - 1.13 m (12 - 0)	305 - 0 (12 - 0)	203 (8)	250 (10)



CABLE ASSEMBLY X  
(18,100 kg (40,000 lbs.) min. breaking strength)  
Tighten to full tension.

REMOVE AND REERECT STEEL PLATE BEAM GUARDRAIL.  
(Sheet 4 of 4)

DETAIL

Δ - Added 01-04-2007