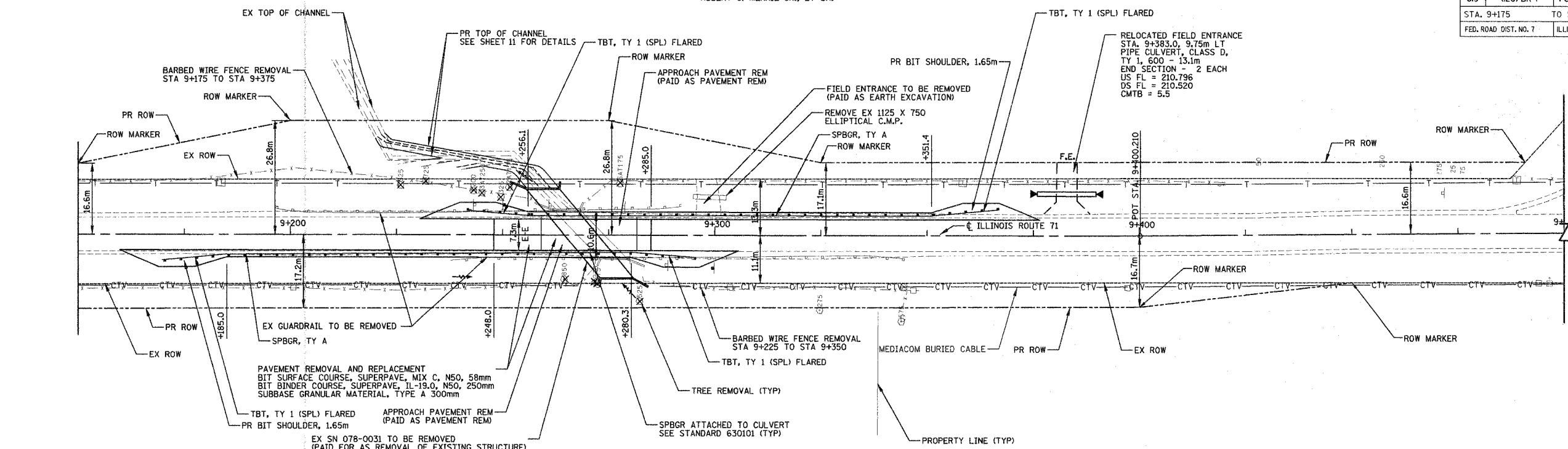


FAP	SECTION	COUNTY	TOTAL SHEETS	SHEET NO.
619	(120) BR-1	PUTNAM	28	7
STA. 9+175		TO STA. 9+375		
FED. ROAD DIST. NO. 7		ILLINOIS FED. AID PROJECT		

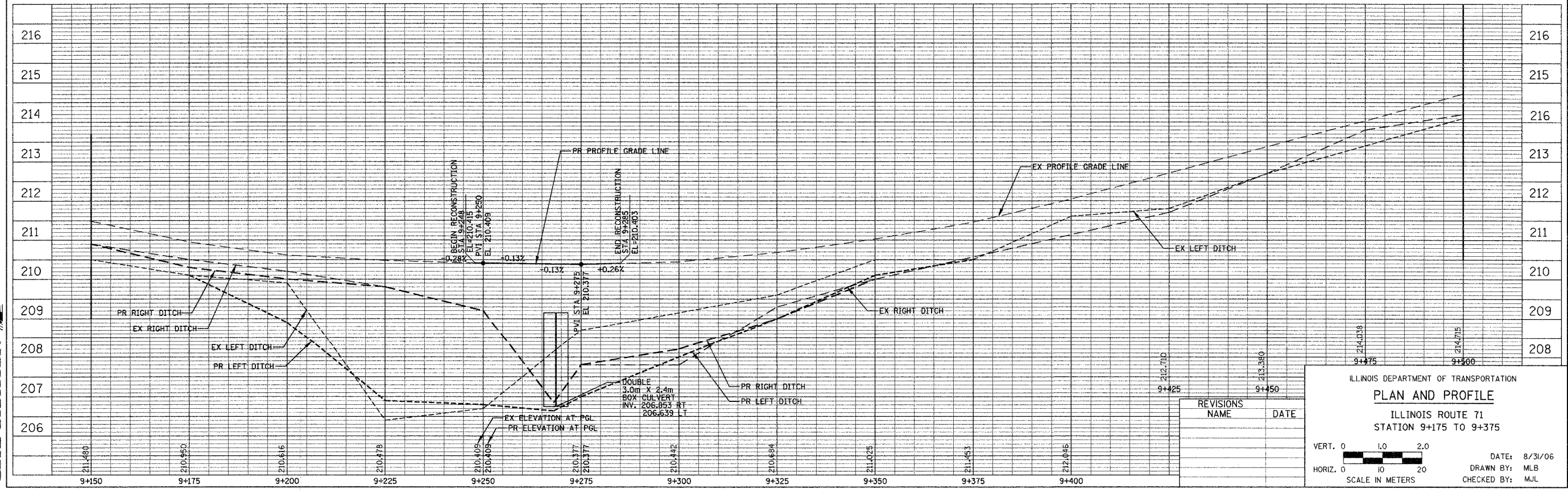
HUBERT J. MENNIE JR., ET UX.



**LEGEND**  
 F.E. = FIELD ENTRANCE  
 = PR DRIVEWAY CULVERT, SIZE AND TYPE AS INDICATED, WITH FLARED END SECTION

- NOTES**
- 1) ALL CULVERT EXTENSIONS, REMOVALS, OR REPLACEMENTS SHALL INCLUDE REMOVAL AND DISPOSAL OF THE EX FLARED END SECTION AND HEADWALLS (COST INCLUDED IN THE ITEM BEING CONSTRUCTED)
  - 2) PR DRIVEWAYS SHALL BE CONSTRUCTED AS FOLLOWS:  
 • FIELD ENTRANCES (F.E.) = MATERIALS AND DIMENSIONS SHOWN ON SHEET NO. 22
  - 3) FOR ROW STATION AND OFFSETS, SEE SHEET NO. 12
  - 4) TREES WERE MEASURED IN 1995 AND THESE SIZES ARE SHOWN ON THE PLANS. FOR QUANTITY ESTIMATION PURPOSES, IT HAS BEEN ASSUMED THAT THE TREES GREW 50%.

ILLINOIS ROUTE 71



FAN SYSTEMS CORPORATION

REVISIONS	NAME	DATE

ILLINOIS DEPARTMENT OF TRANSPORTATION  
**PLAN AND PROFILE**  
 ILLINOIS ROUTE 71  
 STATION 9+175 TO 9+375

VERT. 0 1.0 2.0  
 HORIZ. 0 10 20  
 SCALE IN METERS

DATE: 8/31/06  
 DRAWN BY: MLB  
 CHECKED BY: MJL