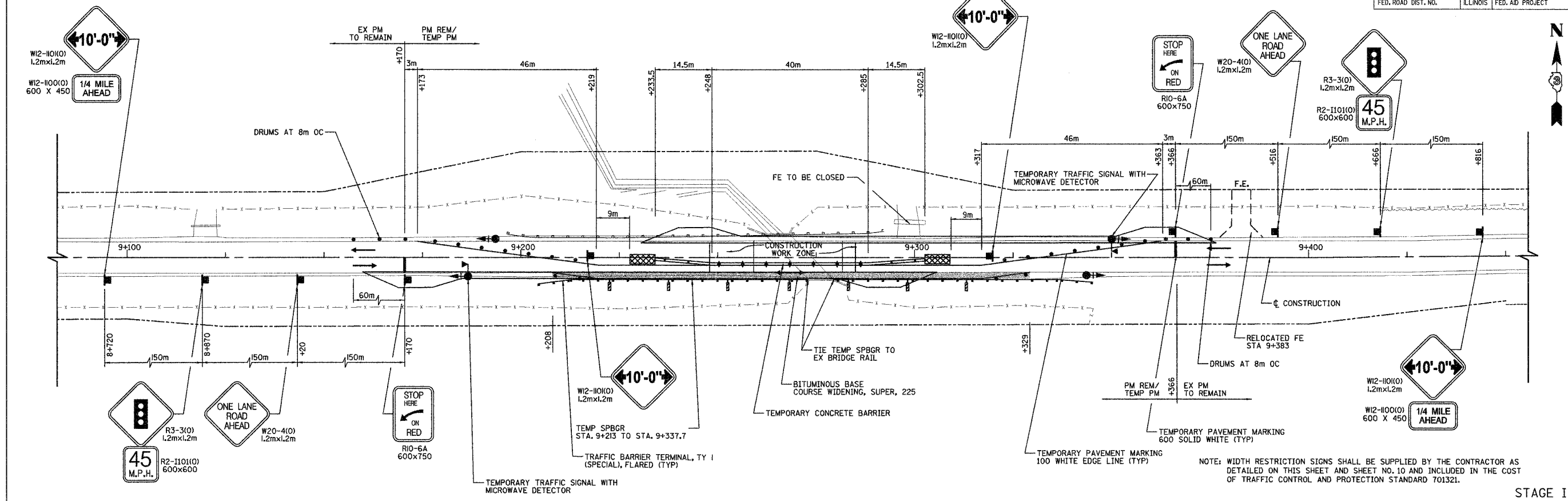


RTE.	SECTION	COUNTY	TOTAL SHEETS	SHEET NO.
619	(120) BR-1	PUTNAM	28	9
STA.		TO STA.		
FED. ROAD DIST. NO.		ILLINOIS	FED. AID PROJECT	

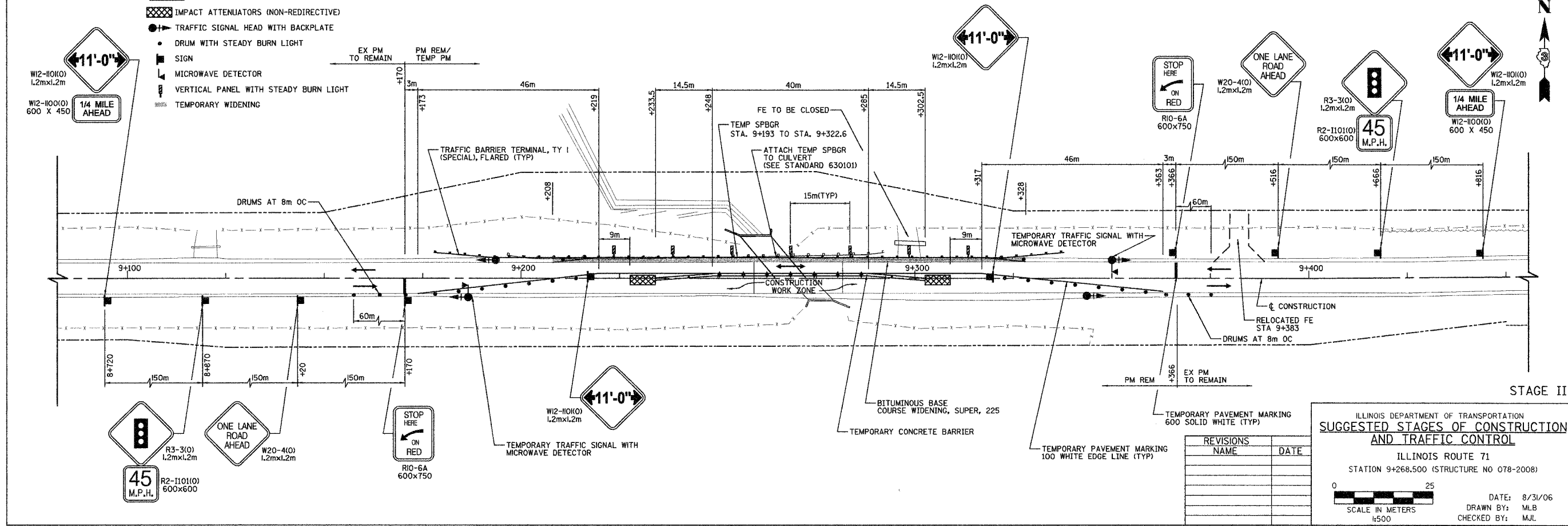
NOTE: TRAFFIC CONTROL SHALL BE INSTALLED ACCORDING TO STANDARD 701321.



NOTE: WIDTH RESTRICTION SIGNS SHALL BE SUPPLIED BY THE CONTRACTOR AS DETAILED ON THIS SHEET AND SHEET NO. 10 AND INCLUDED IN THE COST OF TRAFFIC CONTROL AND PROTECTION STANDARD 701321.

STAGE I

- LEGEND**
- IMPACT ATTENUATORS (NON-REDIRECTIVE)
  - TRAFFIC SIGNAL HEAD WITH BACKPLATE
  - DRUM WITH STEADY BURN LIGHT
  - SIGN
  - MICROWAVE DETECTOR
  - VERTICAL PANEL WITH STEADY BURN LIGHT
  - TEMPORARY WIDENING



REVISIONS	
NAME	DATE

ILLINOIS DEPARTMENT OF TRANSPORTATION  
**SUGGESTED STAGES OF CONSTRUCTION AND TRAFFIC CONTROL**  
 ILLINOIS ROUTE 71  
 STATION 9+268.500 (STRUCTURE NO 078-2008)

DATE: 8/31/06  
 DRAWN BY: MLB  
 CHECKED BY: MJL

SCALE IN METERS  
 1:500