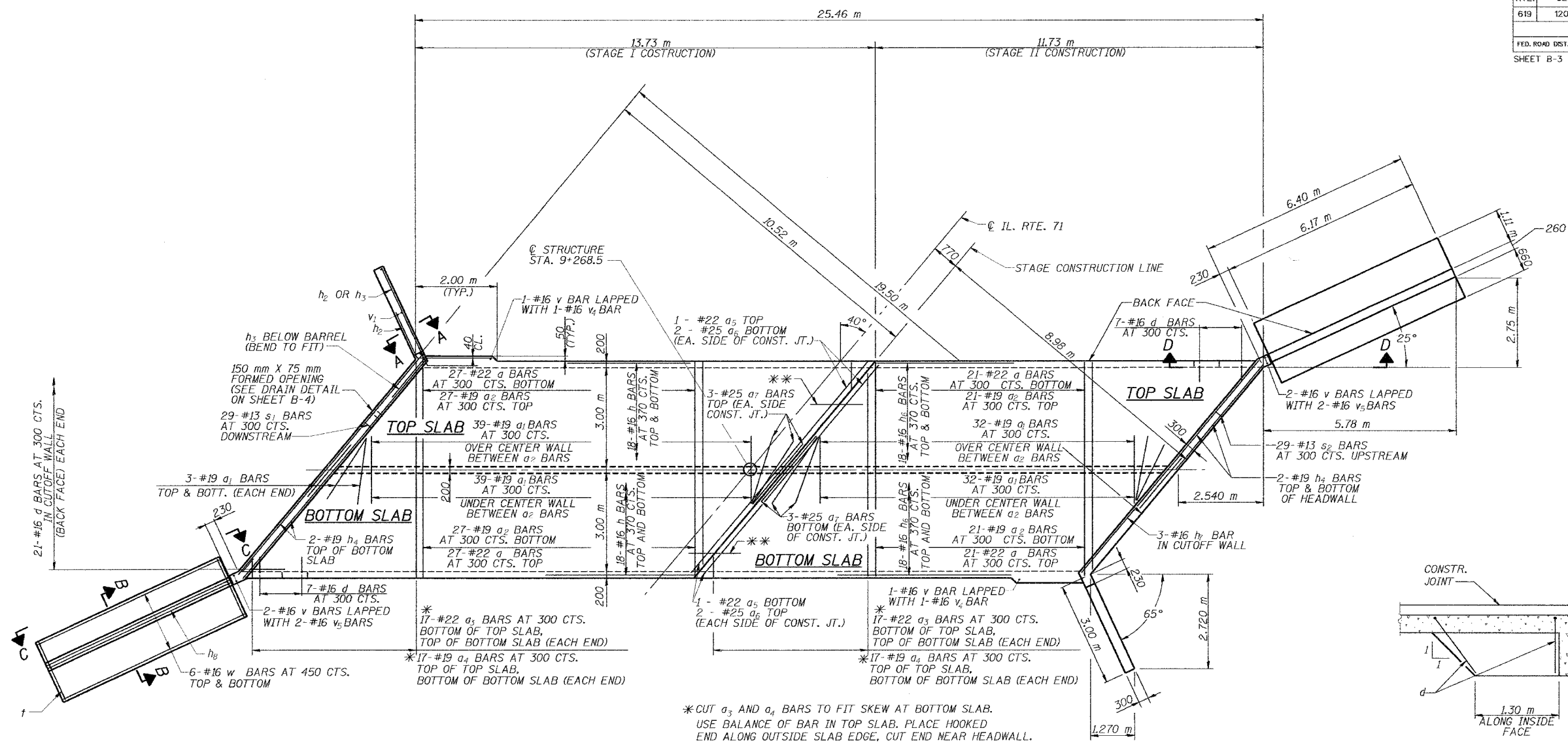


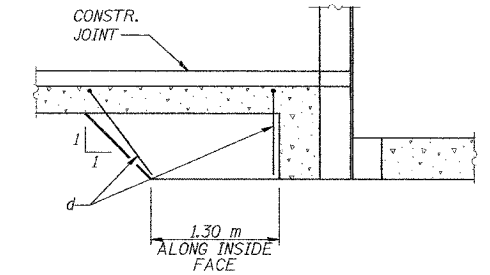
| RTE. | SECTION | COUNTY | TOTAL SHEETS | SHEET NO. |
|------|----------|--------|--------------|-----------|
| 619 | 120 BR-1 | PUTNAM | 28 | 16 |

FED. ROAD DIST. NO. ILLINOIS FED. AID PROJECT- SHEET B-3 OF B-8

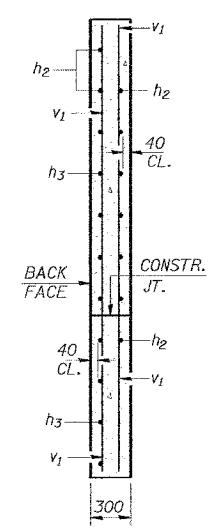


**36-BAR SPLICERS FOR #16 h AND h₆ BARS TOP AND BOTTOM OF TOP SLAB (STAGE I)
 36-BAR SPLICERS FOR #16 h AND h₆ BARS TOP AND BOTTOM OF BOTTOM SLAB (STAGE I)

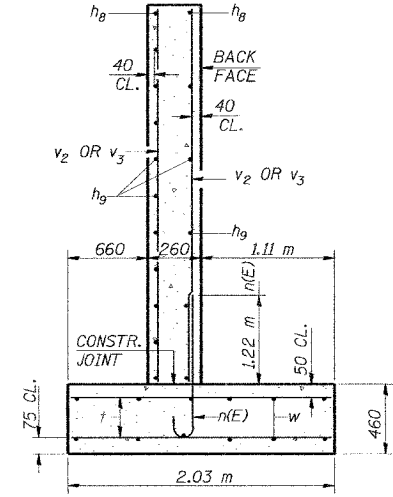
* CUT a₃ AND a₄ BARS TO FIT SKEW AT BOTTOM SLAB.
 USE BALANCE OF BAR IN TOP SLAB. PLACE HOOKED END ALONG OUTSIDE SLAB EDGE, CUT END NEAR HEADWALL.



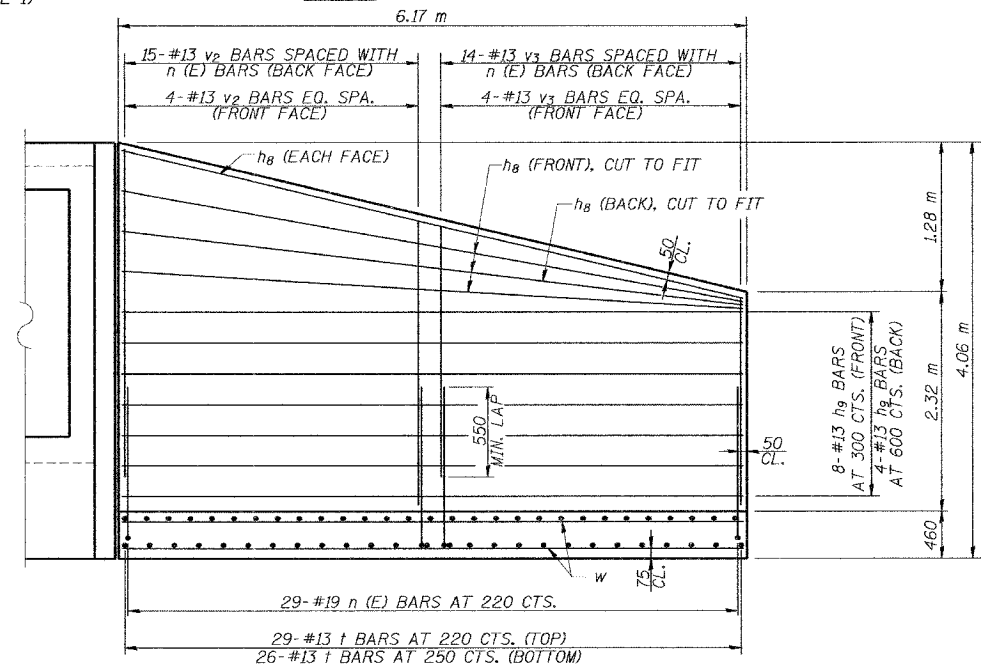
SECTION D-D



SECTION A-A



SECTION B-B
 (MAX. SOIL PRESSURE UNDER FOOTING = 129.3 kPa)



SECTION C-C

| REVISIONS | |
|-----------|------|
| NAME | DATE |
| | |
| | |
| | |

ILLINOIS DEPARTMENT OF TRANSPORTATION
CULVERT PLAN
 ILLINOIS ROUTE 71 OVER AN INTERMITTENT STREAM
 F.A.P. RT. 619 - SECTION 120 BR-1
 PUTNAM COUNTY
 STATION 9+268.500
 STRUCTURE No. 078-2008

DATE: 8/31/06 DESIGNED BY: M/M DRAWN BY: KDS
 CHECKED BY: SG CHECKED BY: M/M

TRANSYSTEMS CORPORATION