

RTE.	SECTION	COUNTY	TOTAL SHEETS	SHEET NO.
619	120 BR-1	PUTNAM	28	21

FED. ROAD DIST. NO. ILLINOIS FED. AID PROJECT-  
SHEET B-8 OF B-8

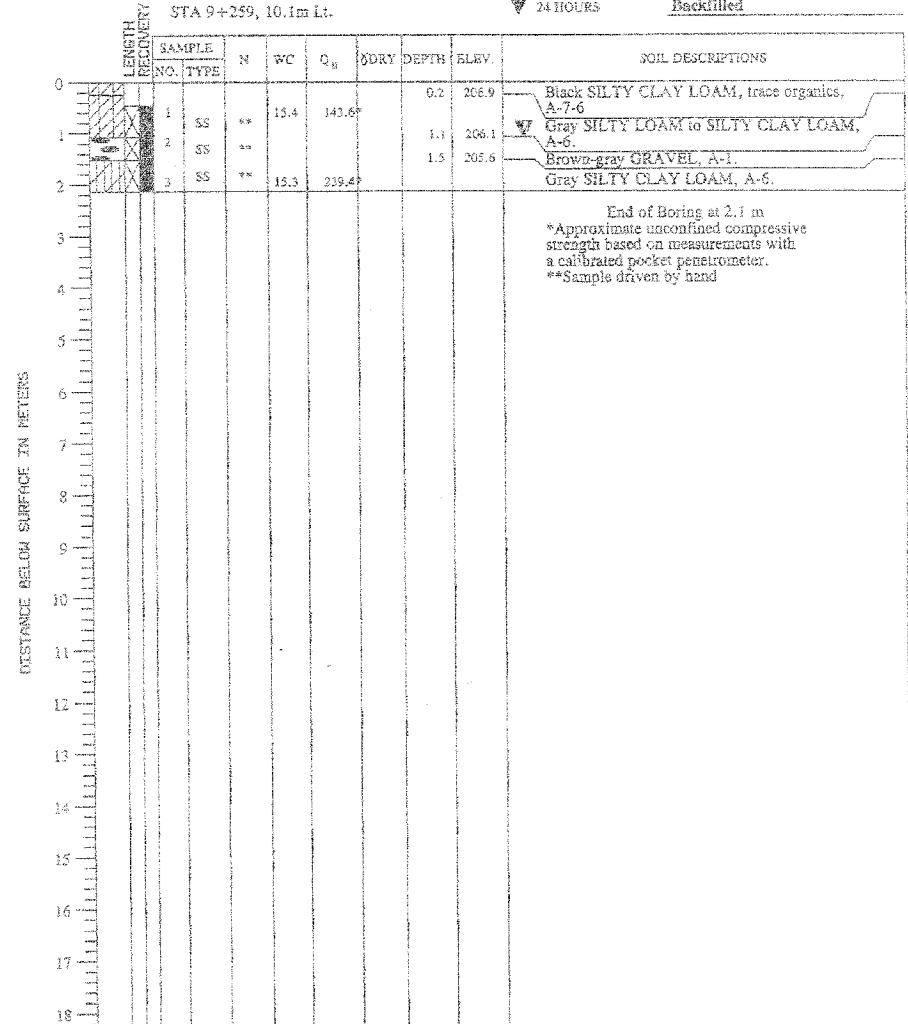
PROJECT Structure 078-0031, Illinois Route 71, Putnam County, IL  
 CLIENT TransSystems Corp., Schaumburg, IL



BORING B-7 DATE STARTED 1-26-98 DATE COMPLETED 1-26-98 JOB 43,757

ELEVATIONS WATER TABLE  
 GROUND SURFACE 207.1 WHILE DRILLING 1.1m  
 END OF BORING 205.0 AT END OF BORING 1.1m  
 24 HOURS Backfilled

STA 9+259, 10.1m Lt.



DRILL RIG NO. HA

Division lines between deposits represent approximate boundaries between soil types in-situ. The transition may be gradual.

A-32

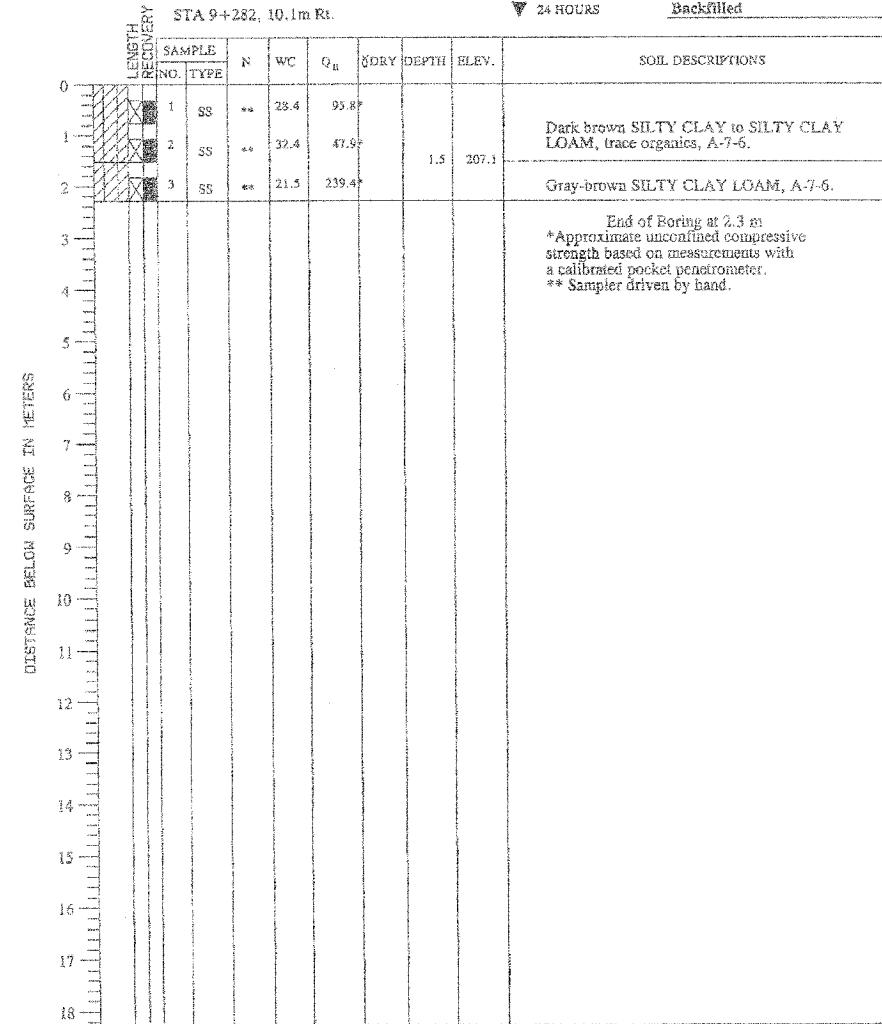
PROJECT Structure 078-0031, Illinois Route 71, Putnam County, IL  
 CLIENT TransSystems Corp., Schaumburg, IL



BORING B-8 DATE STARTED 1-26-98 DATE COMPLETED 1-26-98 JOB 43,757

ELEVATIONS WATER TABLE  
 GROUND SURFACE 208.5 WHILE DRILLING DRY  
 END OF BORING 206.2 AT END OF BORING DRY  
 24 HOURS Backfilled

STA 9+282, 10.1m Rt.



DRILL RIG NO. HA

Division lines between deposits represent approximate boundaries between soil types in-situ. The transition may be gradual.

A-33

REVISIONS	
NAME	DATE

ILLINOIS DEPARTMENT OF TRANSPORTATION  
**SOIL BORINGS - 2 OF 2**  
 ILLINOIS ROUTE 71 OVER AN INTERMITTENT STREAM  
 F.A.P. RT. 619 - SECTION 120 BR-1  
 PUTNAM COUNTY  
 STATION 9+268.500  
 STRUCTURE No. 078-2008

DATE: 8/31/06 DESIGNED BY: MW DRAWN BY: KDS  
 CHECKED BY: SG CHECKED BY: MW

**TRANSYSTEMS CORPORATION**  
3800 PRAIRIE DRIVE, SUITE 200  
 SCHMIDGALL, ILLINOIS 60156-1008  
 TEL: 815-352-9800  
 FAX: 815-352-9802