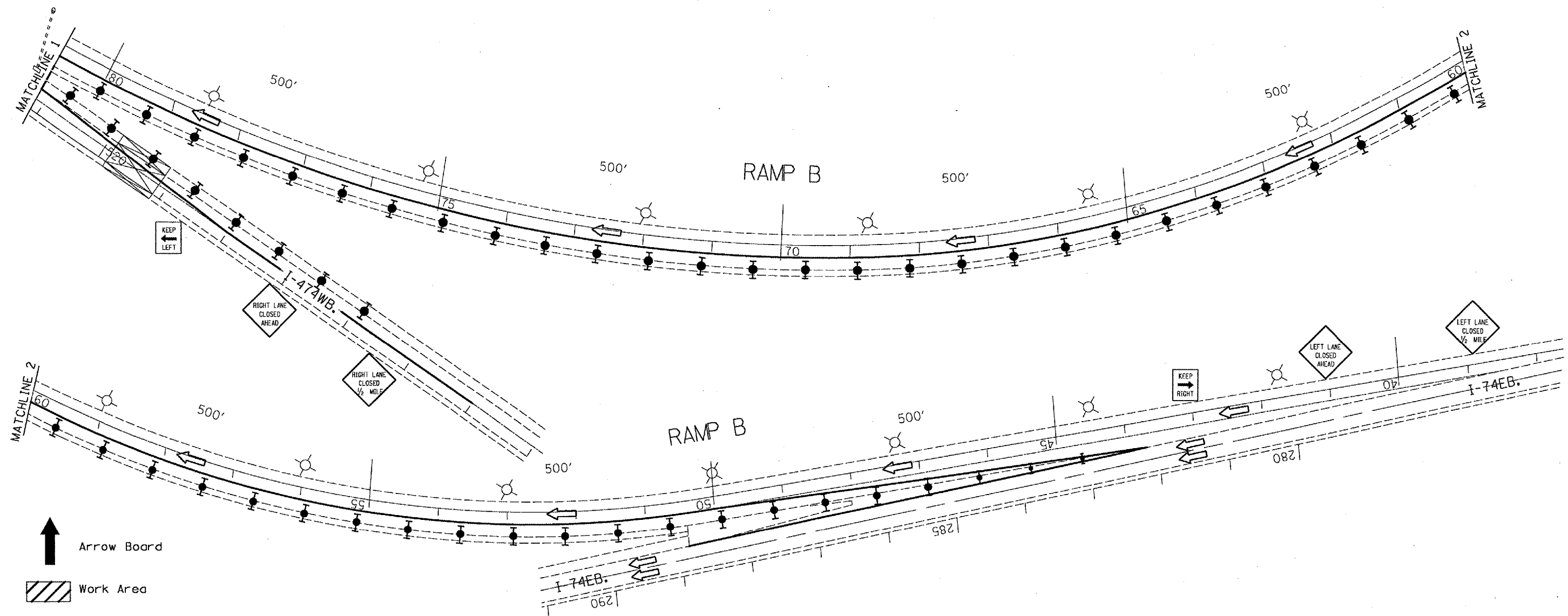

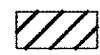








CONTRACT NO. 68618			
F.A.I. RTE.	SECTION	COUNTY	TOTAL SHEET NO.
474	I72-2HB	PEORIA	26 11
STA. 56+57.18		TO STA. 58+86.79	
FED. ROAD DIST. NO. 4	ILLINOIS	FED. AID PROJECT	



-  Arrow Board
-  Work Area
-  Sign
-  Type II barricade, drum, or verticle barricade w/steady-burn monodirectional light
-  Direction Indicator barricade with steady burn monodirectional light
-  Temporary Concrete Barrier
-  Type C Monodirectional Reflector
-  Verticle Panel w/steady-burn monodirectional light

GORE REM./REPL.
TRAFFIC CONTROL

NOTE
Refer to Highway Standards 701401, 701402, and 701402 (Special) for exact placement of traffic management devices and other clarifications as construction staging symbols and dimensioning were duplicated off of these. Additional signage and Ramp 'B' lane reduction requirements may be determined by the Field Engineer and Traffic Control Technician at time of staging for bridge repair Traffic Control.

REVISIONS	
NAME	DATE

SNO72-0112/072-0113
I-474 over IL. 8

ILLINOIS DEPARTMENT OF TRANSPORTATION

TRAFFIC CONTROL PLAN

SCALE: VERT. HORIZ.
DATE 10-31-2006

DRAWN BY CEJ
CHECKED BY

PLOT DATE = 12/7/2006
 FILE NAME = I72-2HB
 PLOT SCALE = AS SHOWN
 REFERENCE = I72-2HB