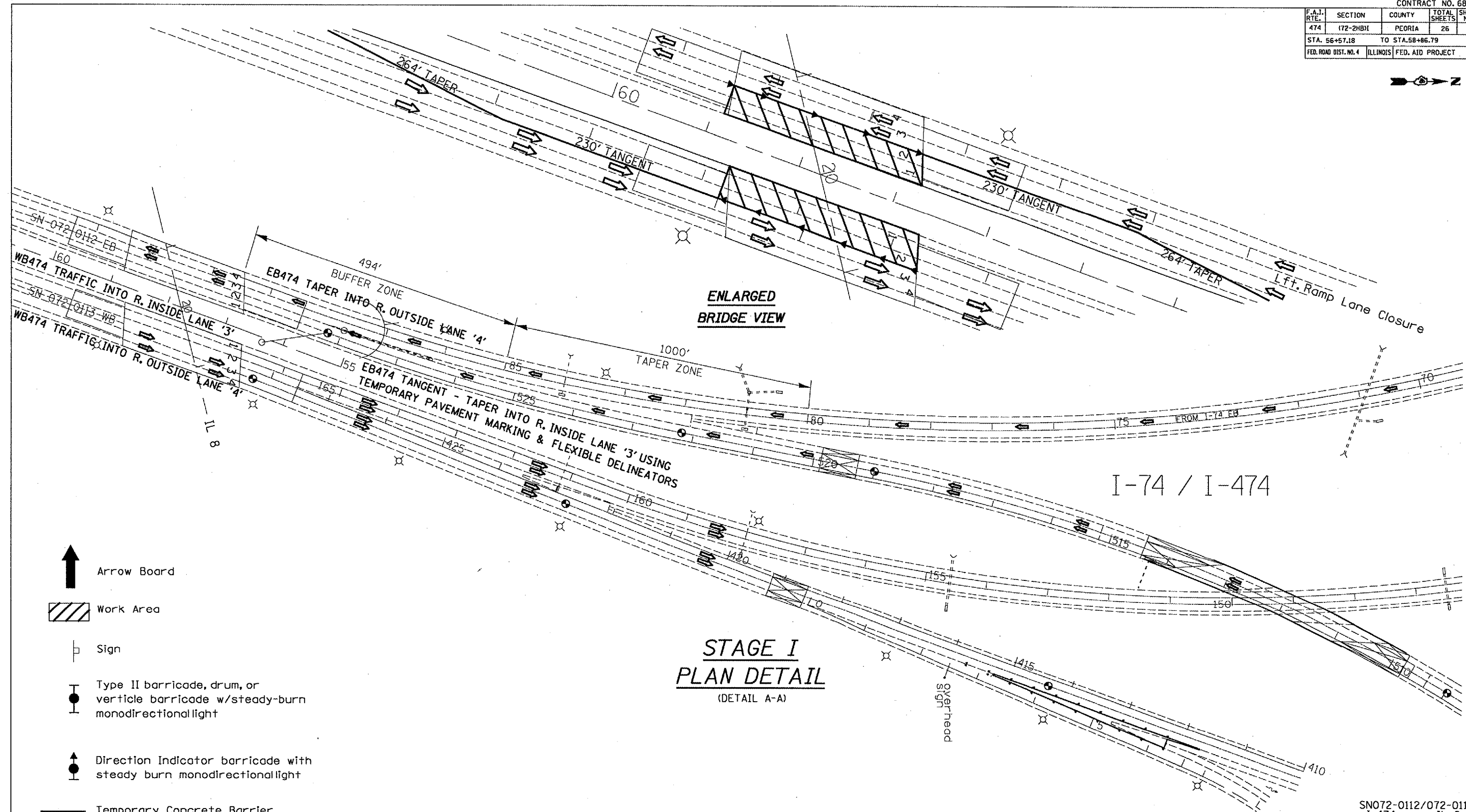

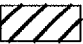








CONTRACT NO. 68618			
F.A.I. RTE.	SECTION	COUNTY	TOTAL SHEETS
474	(72-2HD)I	PEORIA	26
STA. 56+57.18		TO STA. 58+86.79	
FED. ROAD DIST. NO. 4		ILLINOIS FED. AID PROJECT	



-  Arrow Board
-  Work Area
-  Sign
-  Type II barricade, drum, or verticle barricade w/steady-burn monodirectional light
-  Direction Indicator barricade with steady burn monodirectional light
-  Temporary Concrete Barrier
-  Type C Monodirectional Reflector
-  Verticle Panel w/steady-burn monodirectional light

**STAGE I
PLAN DETAIL**
(DETAIL A-A)

NOTE
Refer to Highway Standards 701401, 701402, and 701402 (Special) for exact placement of traffic management devices and other clarifications as construction staging symbols and dimensioning were duplicated off of these. Additional signage and Ramp 'B' lane reduction requirements may be determined by the Field Engineer and Traffic Control Technician at time of staging for bridge repair Traffic Control.

REVISIONS	
NAME	DATE

ILLINOIS DEPARTMENT OF TRANSPORTATION

TRAFFIC STAGING PLAN

SCALE: VERT. DATE 08-03-2006

DRAWN BY CEJ
CHECKED BY

PLT DATE
FILE NAME
PLOT SCALE
REFERENCE