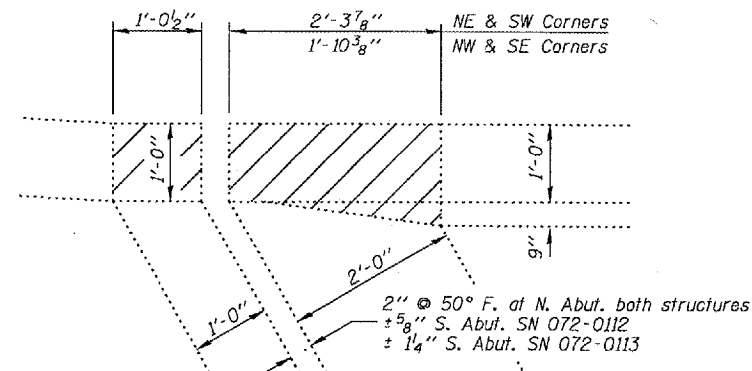
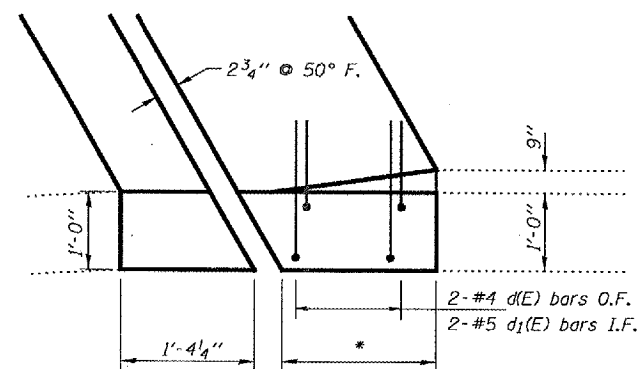


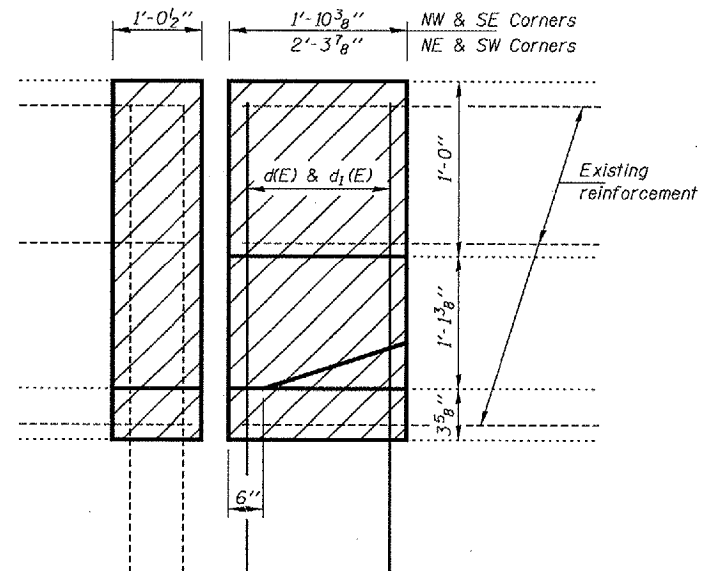
F.A.I. RTE.	SECTION	COUNTY	TOTAL SHEETS	SHEET NO.
474	(72-2HBI)	PEORIA	26	23
STA. 56+57.18		TO STA. 58+86.79		
FED. ROAD DIST. NO. 4		ILLINOIS FED. AID PROJECT		



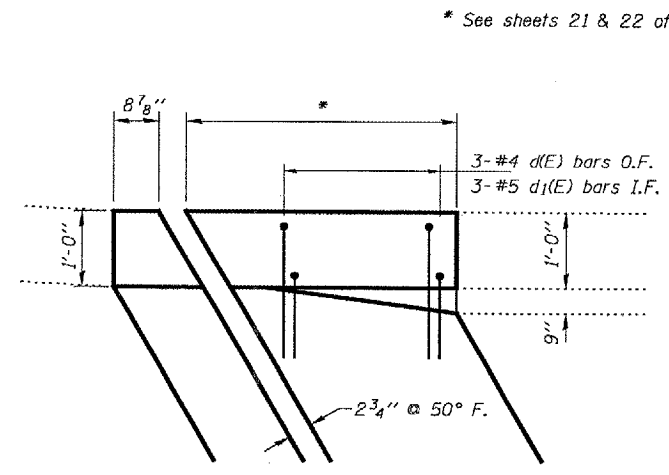
**EXISTING PLAN
PARAPET REMOVAL**



PLAN PARAPET REPLACEMENT
(Typical NW & SE corners)



**INSIDE ELEVATION OF PARAPET
REPLACEMENT AT ABUTMENTS**
(Typical when facing Parapet)



PLAN PARAPET REPLACEMENT
(Typical NE & SW corners)

* See sheets 21 & 22 of 26 for dimensions.

BILL OF MATERIAL

Bar	No.	Size	Length	Shape
a(E)	24	#6	32'-1"	—
a1(E)	10	#6	30'-0"	—
a2(E)	10	#6	35'-10"	—
a3(E)	10	#6	37'-1"	—
a4(E)	10	#6	41'-3"	—
b(E)	264	#5	2'-5"	□
b1(E)	264	#5	2'-8"	┘
d(E)	20	#4	4'-10"	L
d1(E)	20	#5	3'-8"	L
Bar Splicers			Each	40
Concrete Removal			Cu. Yd.	36.2
Concrete Superstructure			Cu. Yd.	36.2
Reinforcement Bars, Epoxy Coated			Pound	4860

NOTE
Hatched areas indicate concrete removal.
Existing reinforcement, extending into removal area, to be cleaned, straightened, and incorporated into new construction.
Cost included with "Concrete Removal."

Reinforcement bars designated (E) shall be epoxy coated.

REVISIONS	
NAME	DATE

ILLINOIS DEPARTMENT OF TRANSPORTATION
**SUPERSTRUCTURE
DETAILS**

SCALE: VERT. _____
HORIZ. _____
DATE 06-05-2006
DRAWN BY CEJ
CHECKED BY _____

PLT DATE = 06/05/06
FILE NAME = 07112&113.dgn
PLOT SCALE = 1/8"=1'-0"
REFERENCE = 07112&113.dgn