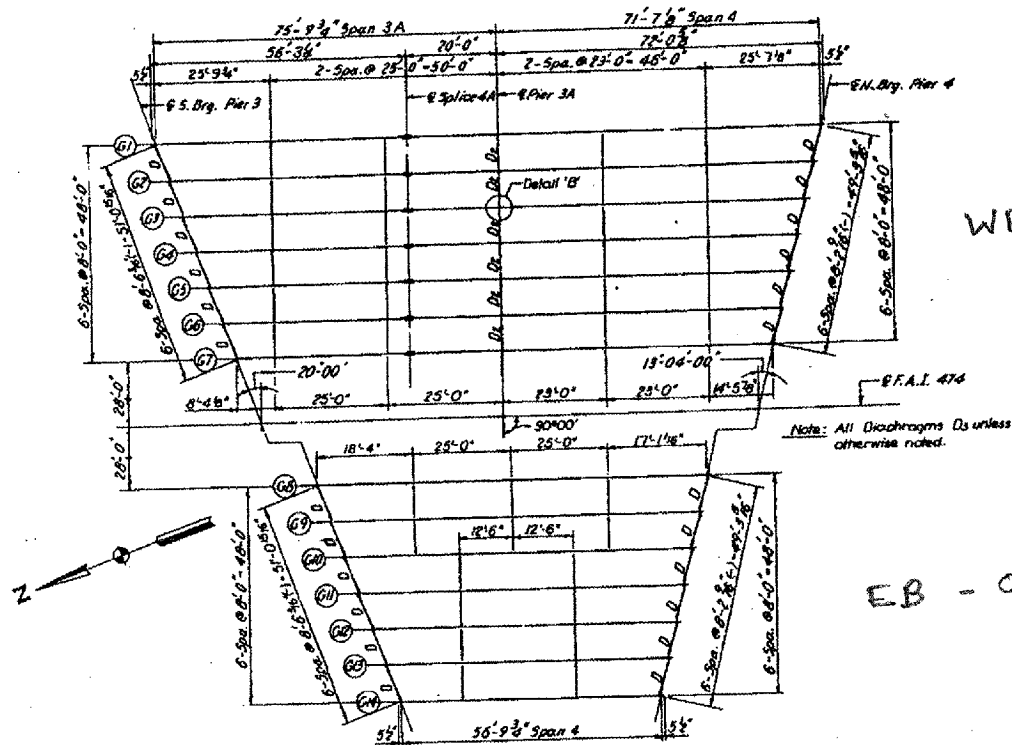


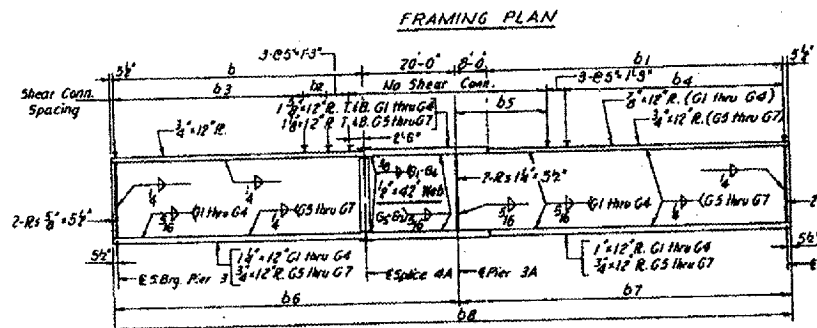
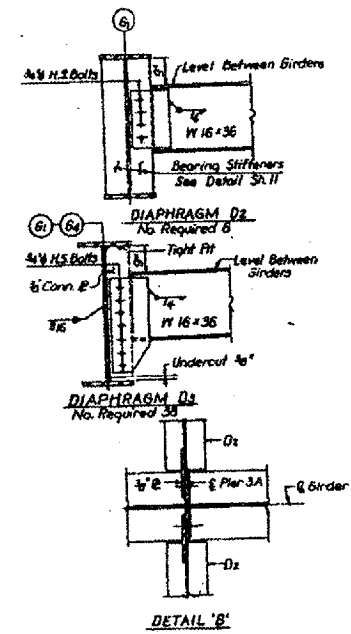
BRIDGE NO 3 & 4 - 072-0114/0115 I 474 OVER KICKAPOO CREEK & RAILROAD

| | | | | |
|-----------------------|----------------|----------|--------------|-----------|
| F.A. RTE. | SECTION | COUNTY | TOTAL SHEETS | SHEET NO. |
| VAR | 04 BRDG PNT 07 | VARIOUS | 17 | 13 |
| STA. | | TO STA. | | |
| FED. ROAD DIST. NO. 4 | | ILLINOIS | | |

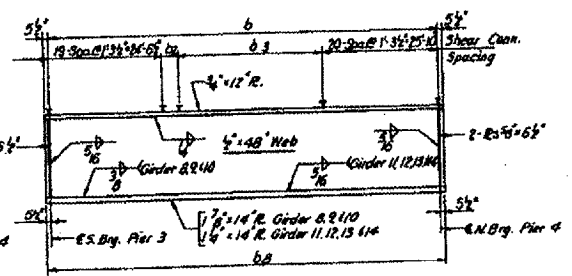


WB - 0115

EB - 0114



GIRDER ELEVATION
Girders 1 thru 7



GIRDER ELEVATION
Girders 8 thru 14

FOR
INFORMATION ONLY

ILLINOIS DEPARTMENT OF TRANSPORTATION
BRIDGE NO 3 & 4
FRAMING PLAN
DATE 07-26-2006
DRAWN BY