

68672

Total Sheets 20  
Sheet No. 1

PROJECT ENGINEER: JIM MILLER 309-671-3451

DESIGNER: TOM INGLIS 309-671-3333

**INDEX OF SHEETS**

- 1) COVER SHEET
- 2) COMMITMENT & GENERAL NOTES
- 3) SUMMARY OF QUANTITIES
- 4) SUMMARY OF QUANTITIES CONTINUED
- 5) PROJECT LOCATION MAP
- 6) BRIDGE NO 1- PLAN & ELEVATION
- 7) BRIDGE NO 1- FRAMING DETAILS
- 8) BRIDGE NO 2- PLAN & ELEVATION
- 9) BRIDGE NO 2- FRAMING DETAILS
- 10) BRIDGE NO 3&4- PLAN & ELEVATION
- 11) BRIDGE NO 3&4- FRAMING DETAILS CONTINUED
- 12) BRIDGE NO 3&4- FRAMING DETAILS
- 13) BRIDGE NO 3&4- FRAMING DETAILS CONTINUED
- 14) BRIDGE NO 5&6-PLAN & ELEVATION
- 15) BRIDGE NO 5&6- FRAMING DETAILS
- 16) BRIDGE NO 7- PLAN & ELEVATION
- 17) BRIDGE NO 7- FRAMING DETAILS

**TRAFFIC CONTROL STANDARDS**

- 701001-01 701401-03
- 701006-02 701402-05
- 701101-01 701411-03
- 701106-01 701601-04
- 701400-02 702001-06

**CONTRACT NO. 68672**  
**CATALOG NO. 033426-00D**

J.U.L.I.E.  
JOINT UTILITY LOCATION INFORMATION FOR EXCAVATION  
1-800-892-0123

**STATE OF ILLINOIS**  
**DEPARTMENT OF TRANSPORTATION**  
**DIVISION OF HIGHWAYS**

**PROPOSED HIGHWAY PLANS**

**ROUTE: VARIOUS**  
**SECTION: D4 BRIDGE PAINTING 2007**  
**C-94-002-07**  
**COUNTY: PEORIA**

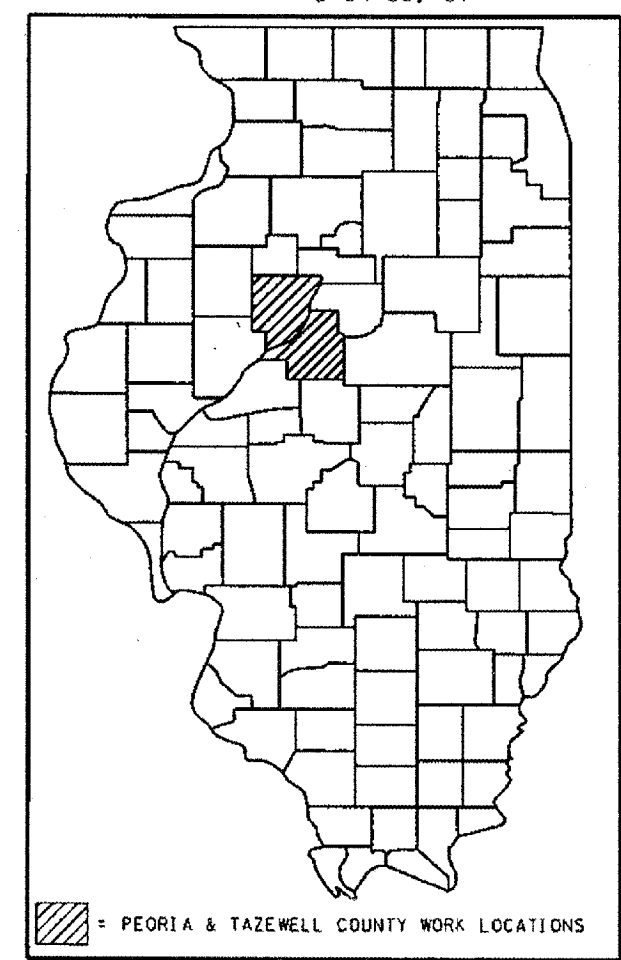
**DESCRIPTION OF PROJECT:**  
**CLEAN & PAINT VARIOUS STRUCTURES**  
**IN PEORIA AND TAZEWELL COUNTY.**

- BRIDGE 1 - DELETED
- BRIDGE 2- US RT 150 OVER IL RT 6.
- BRIDGES 3 & 4- 1474 OVER KICKAPOO CREEK & RR.
- BRIDGES 5 & 6- 1474 OVER RAILROAD.
- BRIDGE 7 - DELETED

**SEE LOCATION MAP ON PAGE 5**

PRINTED BY THE AUTHORITY  
OF THE STATE OF ILLINOIS

D-94-001-07



**STATE OF ILLINOIS**  
**DEPARTMENT OF TRANSPORTATION**  
**DIVISION OF HIGHWAYS**

SUBMITTED AUG 25 20 06  
*[Signature]*

DEPUTY DIRECTOR OF HIGHWAYS,  
REGION ENGINEER

PASSED October 13, 2006  
*Mike Hine / RD*  
ENGINEER OF DESIGN

APPROVED October 13, 2006  
*Milton R. Sees P.E.*  
DIRECTOR OF HIGHWAYS

# COMMITMENTS

No commitments have been made for this project.

F.A. RTE.	SECTION	COUNTY	TOTAL SHEETS	SHEET NO.
VAR	D4 BRDG PNT 07	VARIOUS	17	2
STA.		TO STA.		
FED. ROAD DIST. NO. 4		ILLINOIS		

# GENERAL NOTES

Cleaning & painting of the existing structural steel shall be as specified in the special provision for "Cleaning and Painting Existing Steel Structures". All beams, bearings, and other structural steel shall be cleaned per Near White Blast Cleaning- SSPC SP10 according to the following schedule:

Bridge No. 3, 4, 5, 6 - All beams, bearings, brackets, and other structural steel within five (5) feet (as measured along the centerline of the beam) of either side of the deck joints.

Bridge No. 3, 4, 5, 6 - The fascias shall be cleaned. Limit of work shall include the following: the outer web, top flange, bottom flange and visible bottom flange parallel with the ground.

Bridge No. 2- Entire structure minus the newly widened beams. (The framing plan on page 9 is the scope of work.)

The designated paint system shall be Paint System 1- OZ/E/U or Paint System 5- MCU.

The final finish coat for the interior and exterior shall be according to the following schedule:

Bridge No. 3, 4, 5, 6 -All surfaces cleaned shall be Interstate Green (Munsell No. 7.5G 4/8).

Bridge No. 2 -All exterior surfaces cleaned shall be Interstate Green (Munsell No. 7.5G 4/8).

All interior surfaces cleaned shall be Light Gray (Munsell No. 5b 7/1).

**QP1 & QP2 REQUIREMENTS ARE REQUIRED FOR THIS CONTRACT.**

**TWO (2) AIR MONITORS WILL BE REQUIRED AT BRIDGE NO. 2.**

ILLINOIS DEPARTMENT OF TRANSPORTATION  
COMMITMENTS &  
GENERAL NOTES  
DATE 08-24-2006 DRAWN BY

# SUMMARY OF QUANTITIES

F.A. RTE.	SECTION	COUNTY	TOTAL SHEETS	SHEET NO.
VAR	D4 BRDG PNT 07	VARIOUS	17	3
STA.		TO STA.		
FED. ROAD DIST. NO. 4		ILLINOIS		

## 100% STATE SFTY- 2A

CODE NO.	ITEM	UNIT	TAZEWELL	PEORIA	TOTAL
			URBAN	URBAN	
50600700	CLEANING AND PAINTING STEEL BR #2	L. SUM		1.0	1.0
50600800	CLEANING AND PAINTING STEEL BR #3	L. SUM		1.0	1.0
50600900	CLEANING AND PAINTING STEEL BR #4	L. SUM		1.0	1.0
50601000	CLEANING AND PAINTING STEEL BR #5	L. SUM		1.0	1.0
50601100	CLEANING AND PAINTING STEEL BR #6	L. SUM		1.0	1.0
50606402	CONTAINMENT & DISPOSAL OF LEAD PAINT CLEANING RESIDUES NO 2	L. SUM		1.0	1.0
50606403	CONTAINMENT & DISPOSAL OF LEAD PAINT CLEANING RESIDUES NO 3	L. SUM		1.0	1.0
50606404	CONTAINMENT & DISPOSAL OF LEAD PAINT CLEANING RESIDUES NO 4	L. SUM		1.0	1.0
50606405	CONTAINMENT & DISPOSAL OF LEAD PAINT CLEANING RESIDUES NO 5	L. SUM		1.0	1.0
50606406	CONTAINMENT & DISPOSAL OF LEAD PAINT CLEANING RESIDUES NO 6	L. SUM		1.0	1.0

ILLINOIS DEPARTMENT OF TRANSPORTATION

## SUMMARY OF QUANTITIES

DATE 07-26-2006

DRAWN BY

SUMMARY OF QUANTITIES CONTINUED

F.A. RTE.	SECTION	COUNTY	TOTAL SHEETS	SHEET NO.
VAR	D4 BRDG PNT 07	VARIOUS	17	4
STA.		TO STA.		
FED. ROAD DIST. NO. 4		ILLINOIS		

100% STATE SFTY- 2A

CODE NO.	ITEM	UNIT	100% STATE SFTY- 2A		TOTAL
			PEORIA	URBAN	
67100100	MOBILIZATION	L. SUM		1.0	1.0
70100420	TRAFFIC CONTROL AND PROTECTION, STANDARD 701411	EACH		4.0	4.0
70100800	TRAFFIC CONTROL AND PROTECTION, STANDARD 701401	L. SUM		1.0	1.0
70100805	TRAFFIC CONTROL AND PROTECTION, STANDARD 701402	L. SUM		1.0	1.0
X0323984	PORTABLE TEMPORARY BARRIER SYSTEM	FOOT		286	286
X0323985	RELOCATE PORTABLE TEMPORARY BARRIER SYSTEM	FOOT		676	676
Z0048665	RAILROAD PROTECTIVE LIABILITY INSURANCE	L. SUM		1.0	

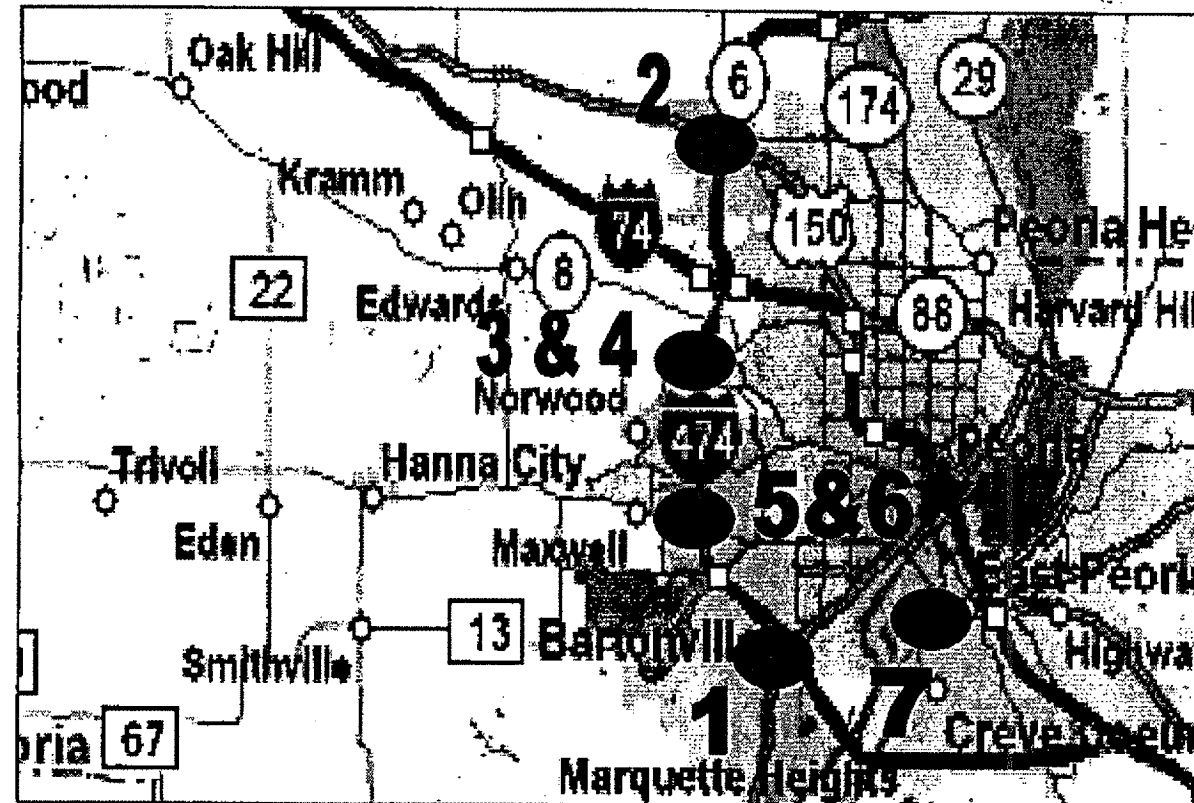
ILLINOIS DEPARTMENT OF TRANSPORTATION  
 SUMMARY OF QUANTITIES  
 CONTINUED

DATE 07-26-2006

DRAWN BY

LOCATION MAP

F.A. RTE.	SECTION	COUNTY	TOTAL SHEETS	SHEET NO.
VAR	D4 BRDG PNT 07	VARIOUS	17	5
STA.		TO STA.		
FED. ROAD DIST. NO. 4		ILLINOIS		



- BRIDGE NO. 1- DELETED
- BRIDGE NO. 2- US 150 OVER IL RT 6
- BRIDGE NO. 3 & 4- I 474 OVER BNSF RR & KICKAPOO CREEK
- BRIDGE NO. 5 & 6- I 474 OVER CHICAGO NORTHWESTERN
- BRIDGE NO. 7- DELETED

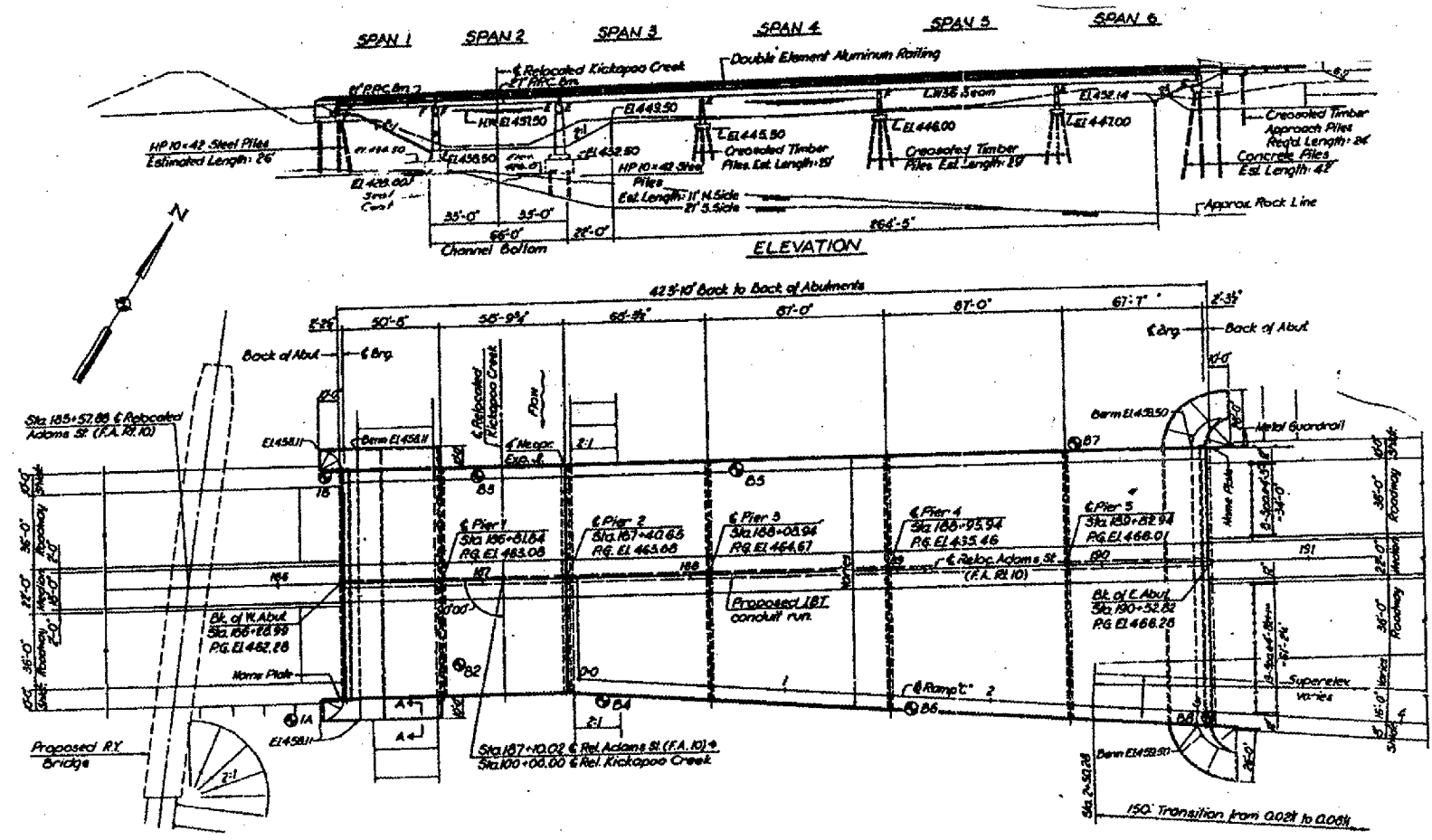
ILLINOIS DEPARTMENT OF TRANSPORTATION

LOCATION MAP

DATE 07-26-2006      DRAWN BY

# BRIDGE NO 1- THIS STRUCTURE DELETED

F.A. RTE.	SECTION	COUNTY	TOTAL SHEETS	SHEET NO.
VAR	D4 BRDG PNT 07	VARIOUS	17	6
STA.		TO STA.		
FED. ROAD DIST. NO. 4		ILLINOIS		

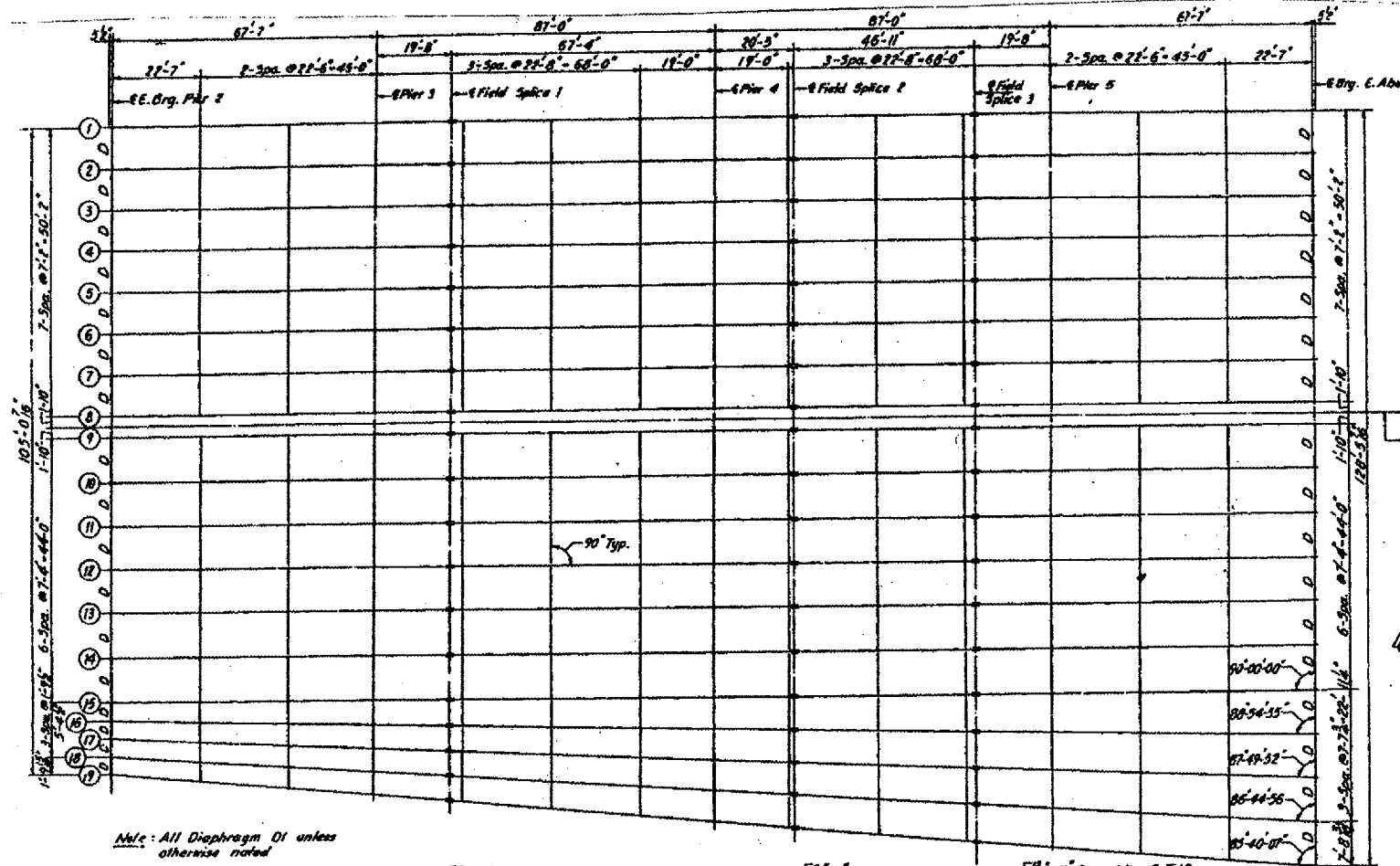


FOR INFORMATION ONLY

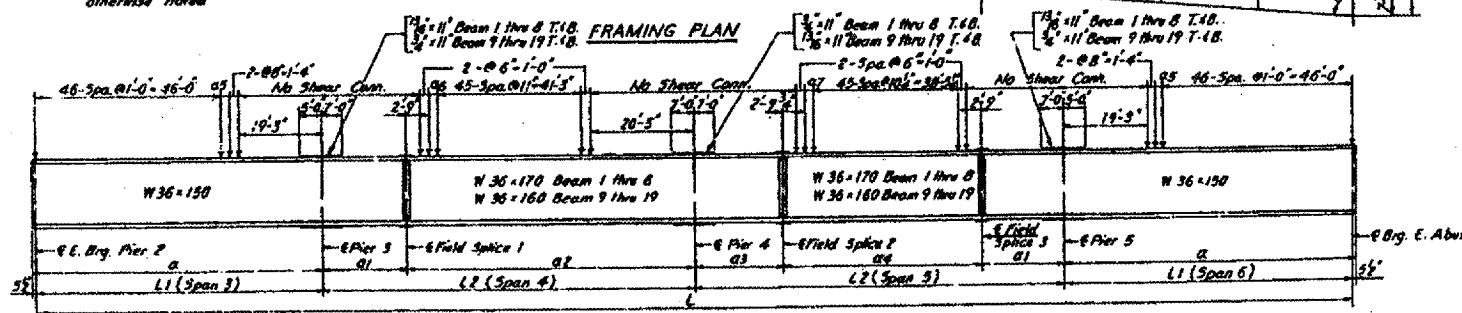
ILLINOIS DEPARTMENT OF TRANSPORTATION  
 BRIDGE NO 1  
 PLAN & ELEVATION  
 DATE 07-26-2006 DRAWN BY

BRIDGE NO 1- THIS STRUCTURE DELETED

F.A. RTE.	SECTION	COUNTY	TOTAL SHEETS	SHEET NO.
	D4 BRDG PNT 07	VARIOUS	17	7
STA.		TO STA.		
FED. ROAD DIST. NO. 4		ILLINOIS		



Note: All Diaphragm DI unless otherwise noted



BEAM 19 = 310 FT  
BEAM ELEVATION

ILLINOIS DEPARTMENT OF TRANSPORTATION  
BRIDGE NO 1  
FRAMING PLAN

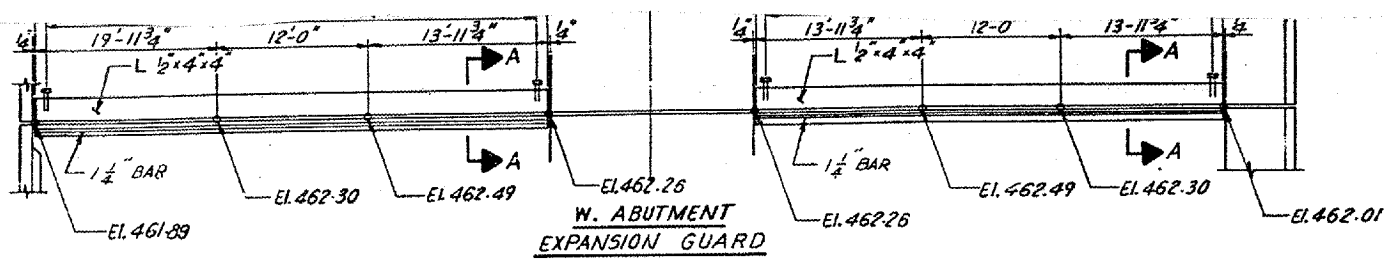
FOR INFORMATION ONLY

DATE 07-26-2006

DRAWN BY

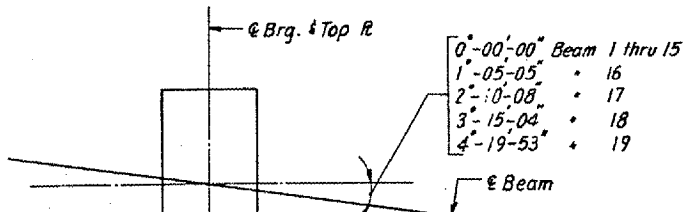
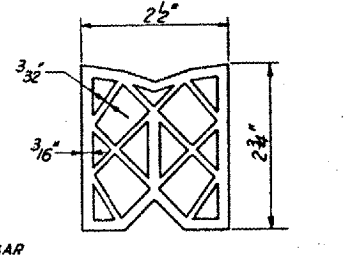
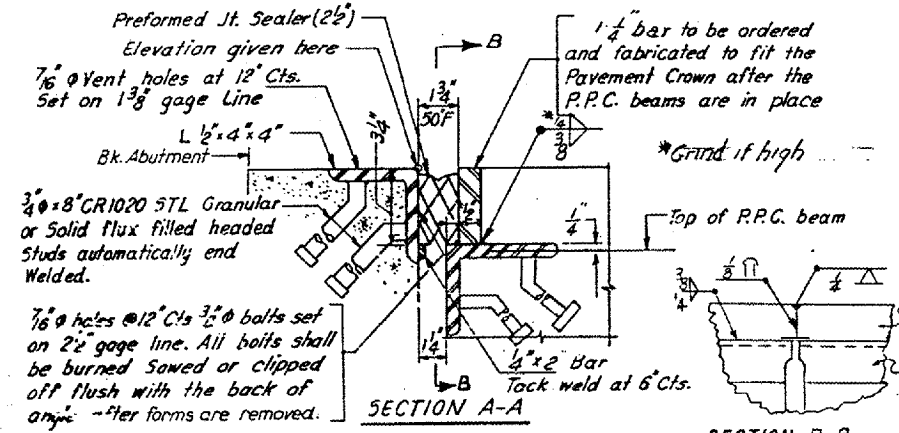
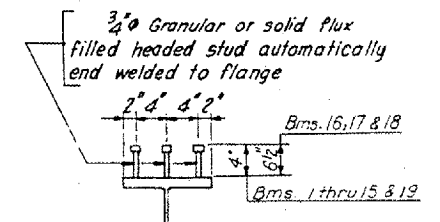
# BRIDGE NO 1 - THIS STRUCTURE DELETED.

F.A. RTE.	SECTION	COUNTY	TOTAL SHEETS	SHEET NO.
VAR	D4 BRDG PNT 07	VARIOUS	17	7A
STA.	TO STA.			
FED. ROAD DIST. NO. 4	ILLINOIS			

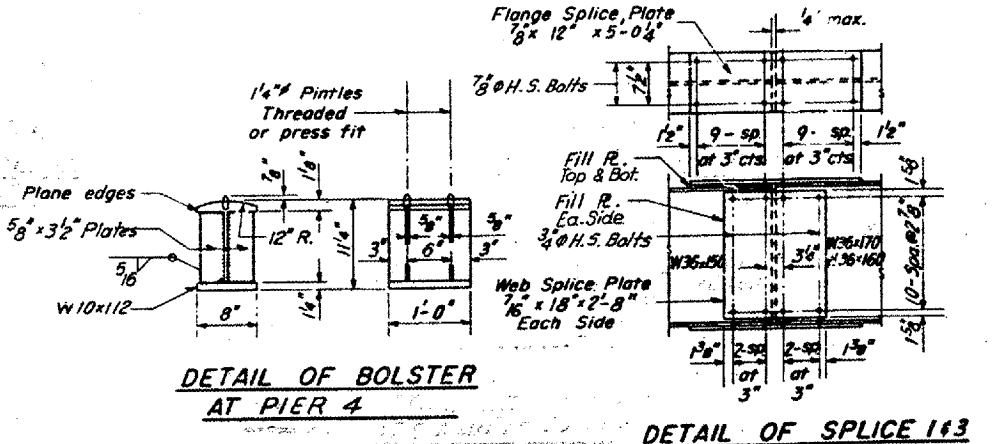
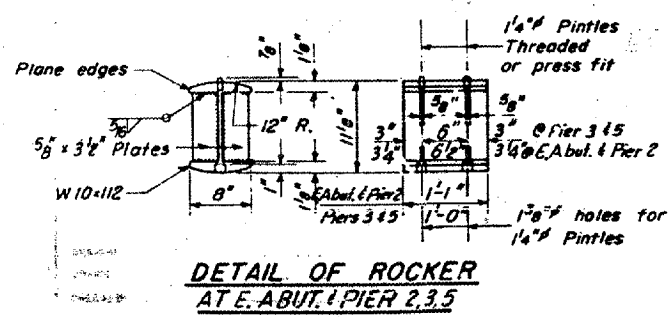
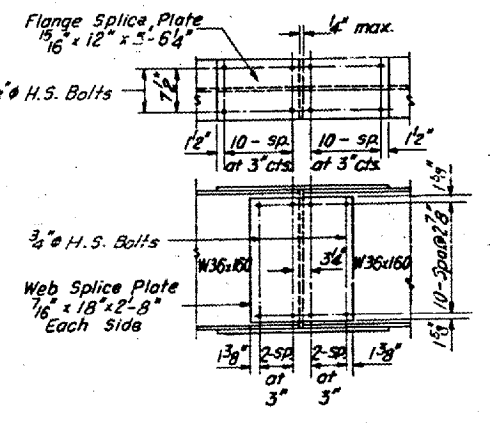
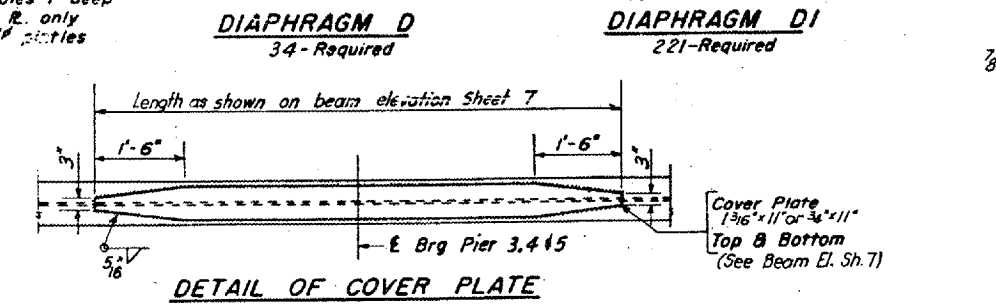
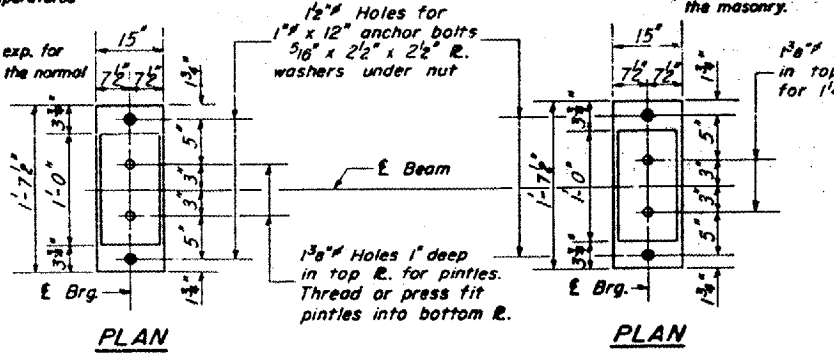
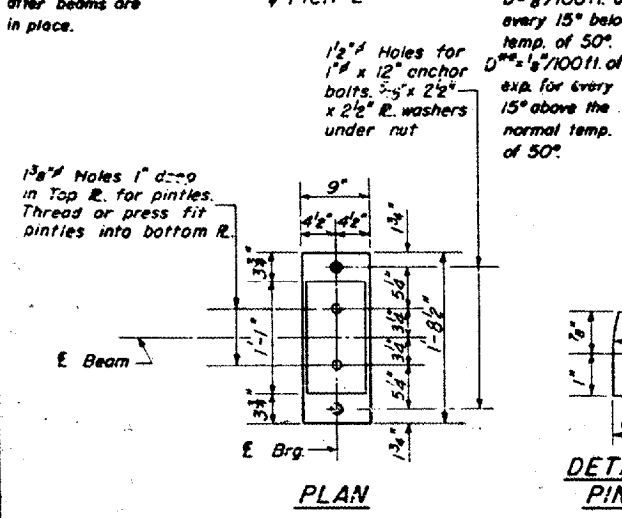
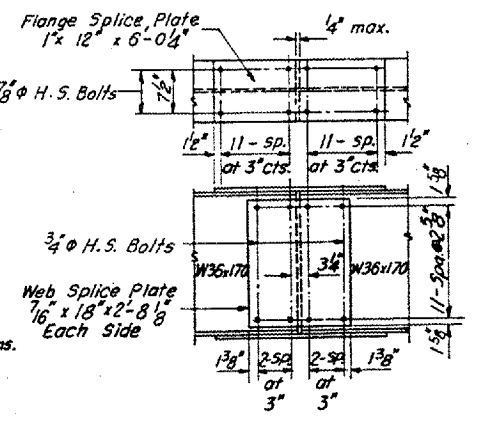
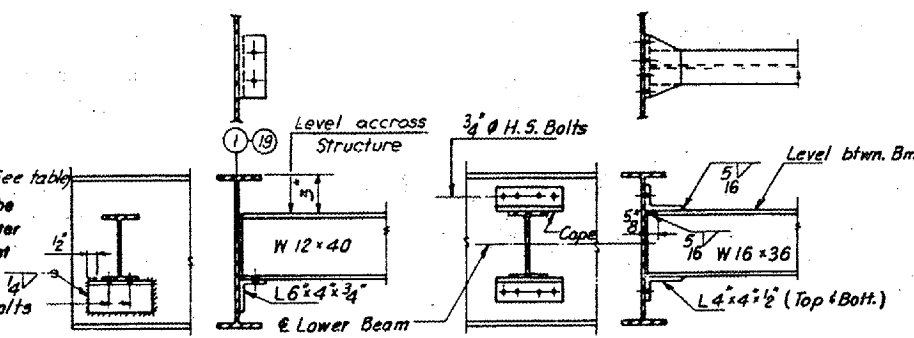
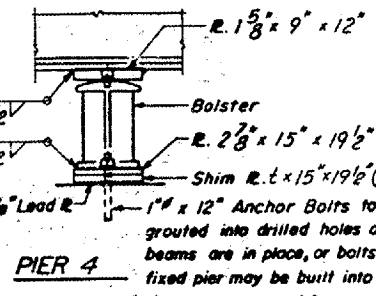
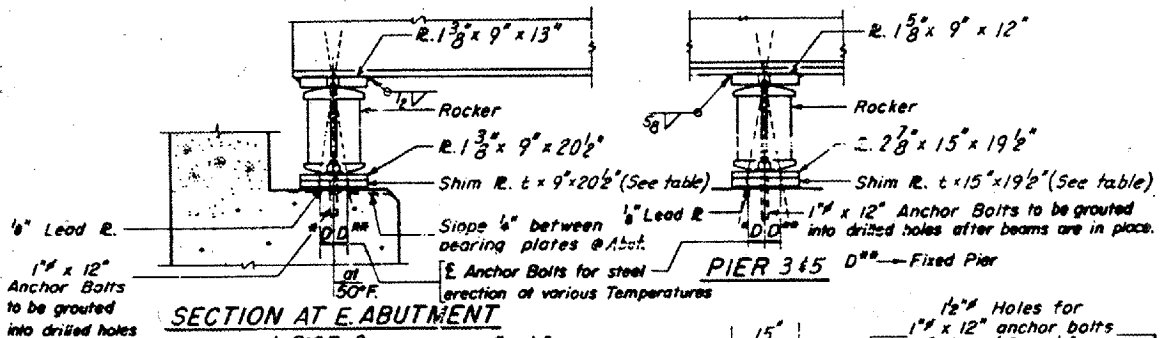


Shim Plate thickness (t)

Location	Bms. 1 & 2	Bm. 3	Bm. 4	Bm. 5	Bm. 6	Bm. 7	Bm. 8
Pier 2	1/2"	1 3/4"	1 1/2"	1"	1/2"		
Pier 3	3/4"					3/8"	
Pier 4	1/2"		3/8"			1/2"	
Pier 5	3/8"						



SHEAR CONNECTOR DETAIL  
No. Req'd = 9,696 - (4' x 3/4" phi)  
1,818 - (6' x 3/4" phi)



FOR INFORMATION ONLY

STATE OF ILLINOIS  
DEPARTMENT OF TRANSPORTATION

STRUCTURAL STEEL  
RELOCATED ADAMS STREET (FA 10)  
OVER  
KICKAPOO CREEK  
STA. 187+10.02  
PEORIA COUNTY SECTION 48-B

CHRISTIAN-ROGE AND ASSOC.  
ENGINEERS  
CHICAGO ILLINOIS

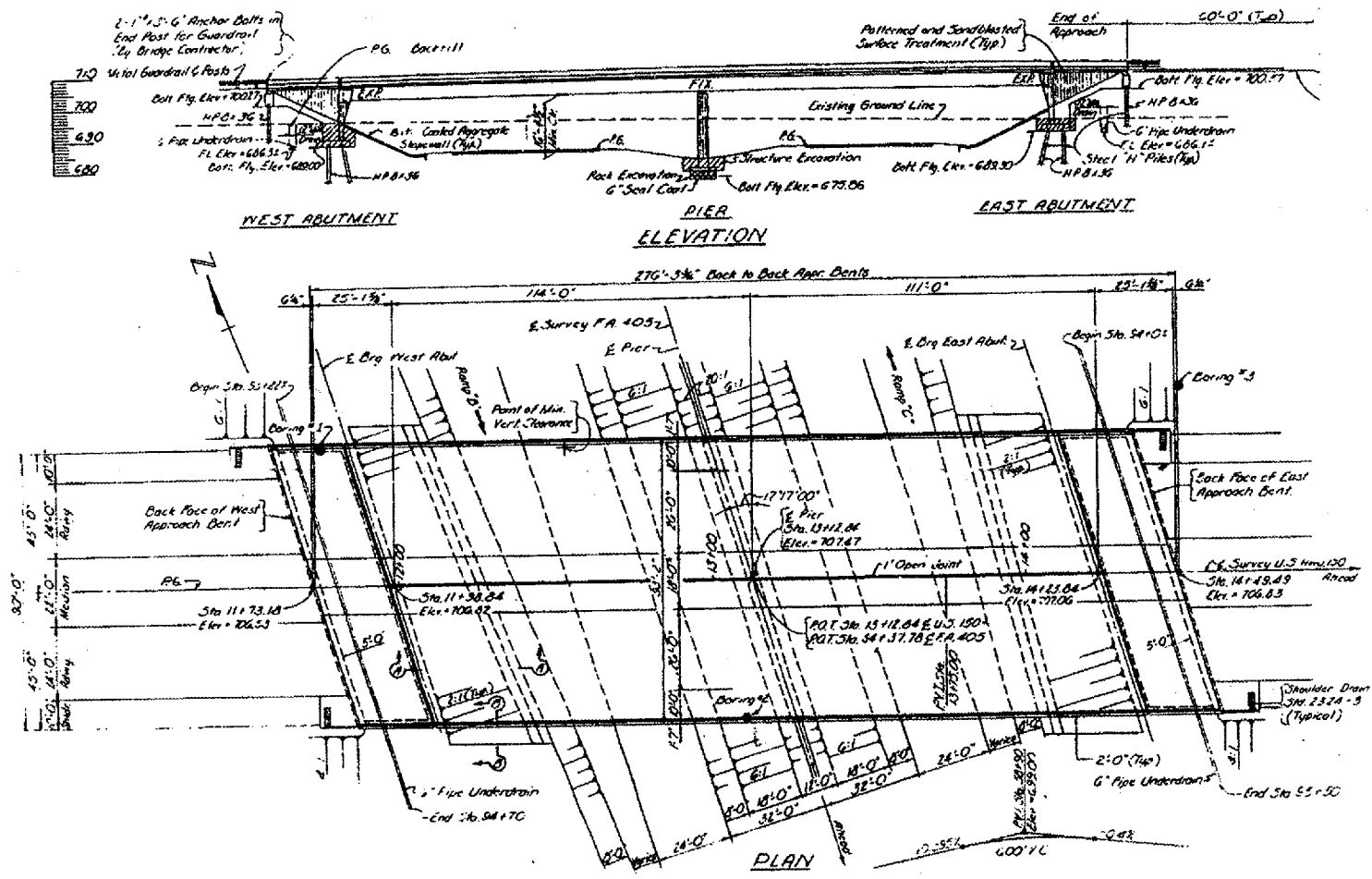
SHEET  
8 OF 26

ADD SHEET



# BRIDGE NO 2 - 072-0140 US RT 150 OVER IL RT 6

F.A. RTE.	SECTION	COUNTY	TOTAL SHEETS	SHEET NO.
VAR	D4 BRDG PNT 07	VARIOUS	17	8
STA.		TO STA.		
FED. ROAD DIST. NO. 4		ILLINOIS		

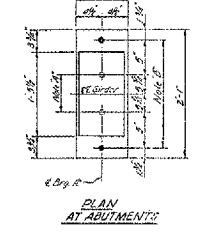
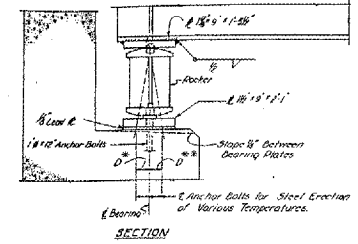
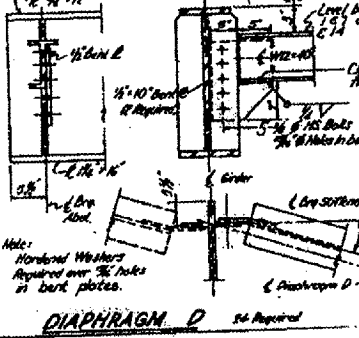
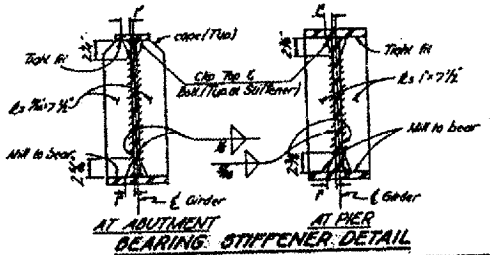
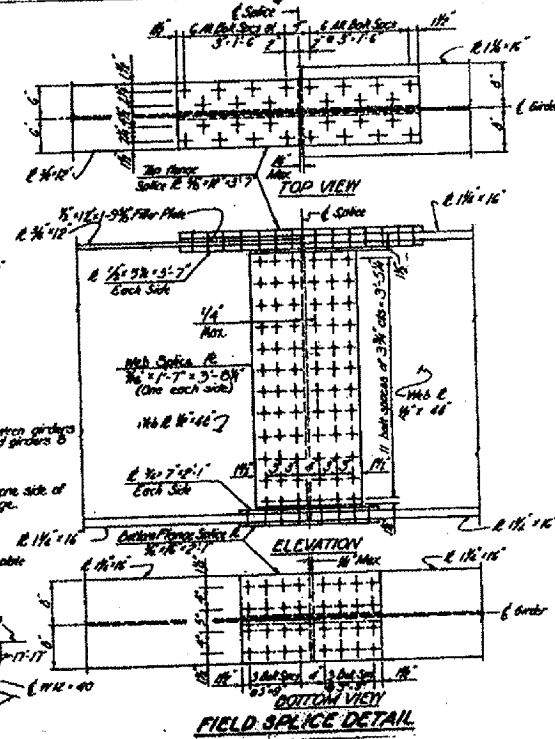
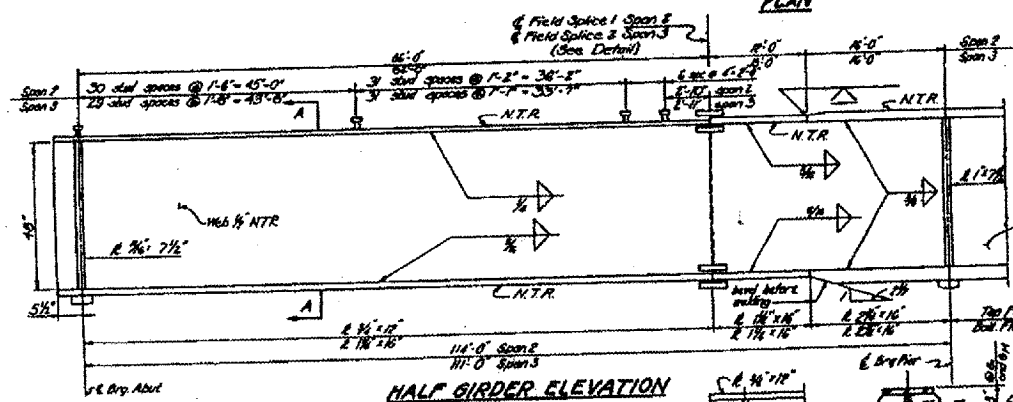
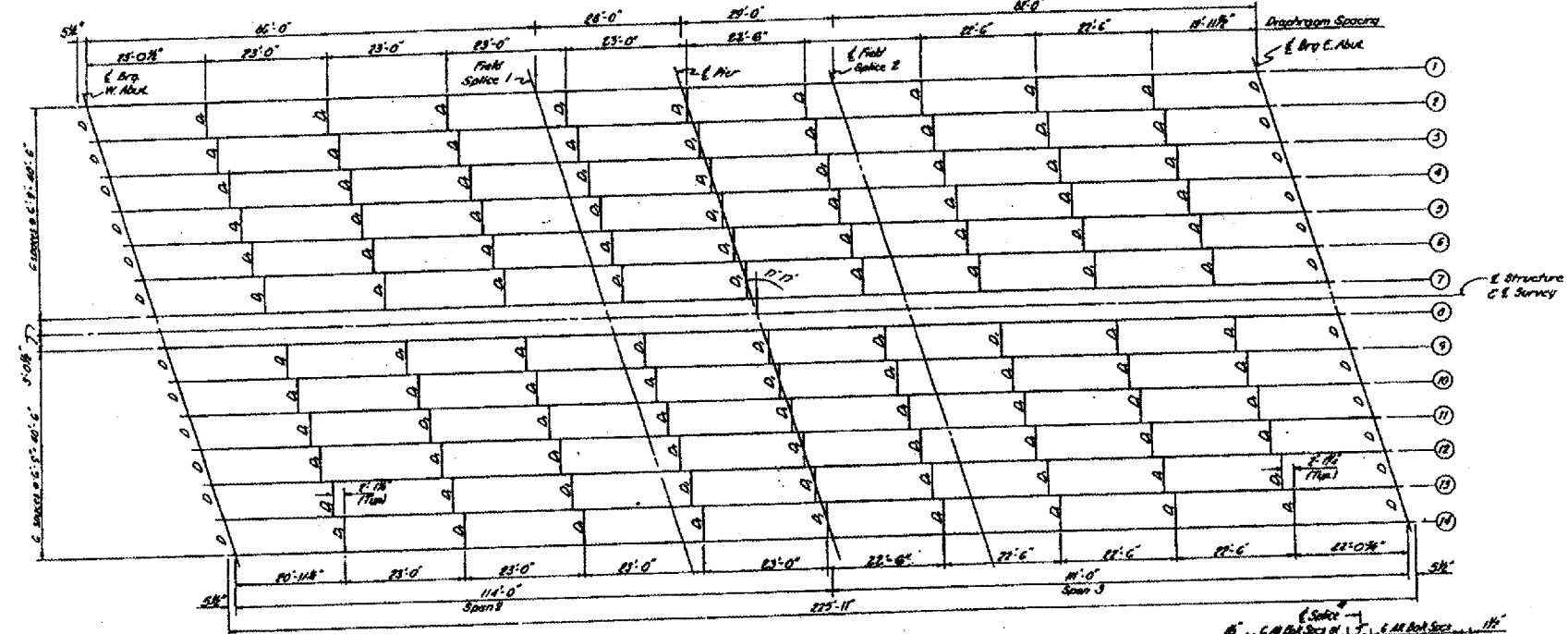


FOR  
INFORMATION ONLY

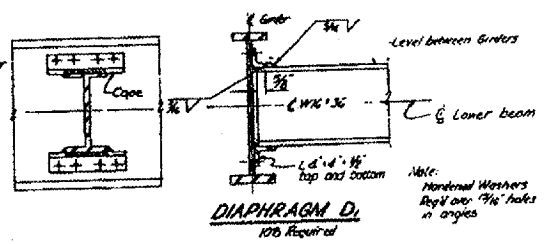
ILLINOIS DEPARTMENT OF TRANSPORTATION  
BRIDGE NO 2  
PLAN & ELEVATION  
DATE 07-26-2006 DRAWN BY

# BRIDGE NO 2- 072-0140 US RT 150 OVER IL RT 6

F.A. RTE.	SECTION	COUNTY	TOTAL SHEETS	SHEET NO.
VAR	04 BRDG PNT 07	VARIOUS	17	9
STA.		TO STA.		
FED. ROAD DIST. NO. 4		ILLINOIS		



NOTE:  
 1/2" dia. 1" long in Top &  
 1/2" dia. 1/2" long in Bottom &  
 Fill holes with Mortar



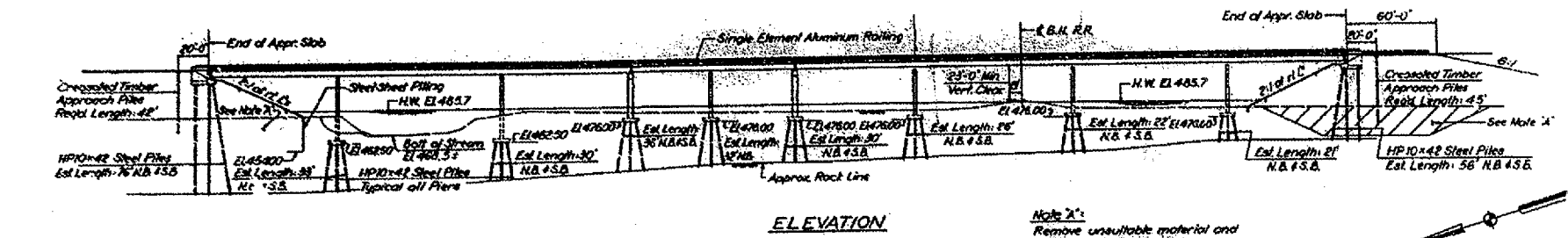
FOR INFORMATION ONLY

ILLINOIS DEPARTMENT OF TRANSPORTATION  
 BRIDGE NO 2  
 FRAMING PLAN

DATE 07-26-2006 DRAWN BY

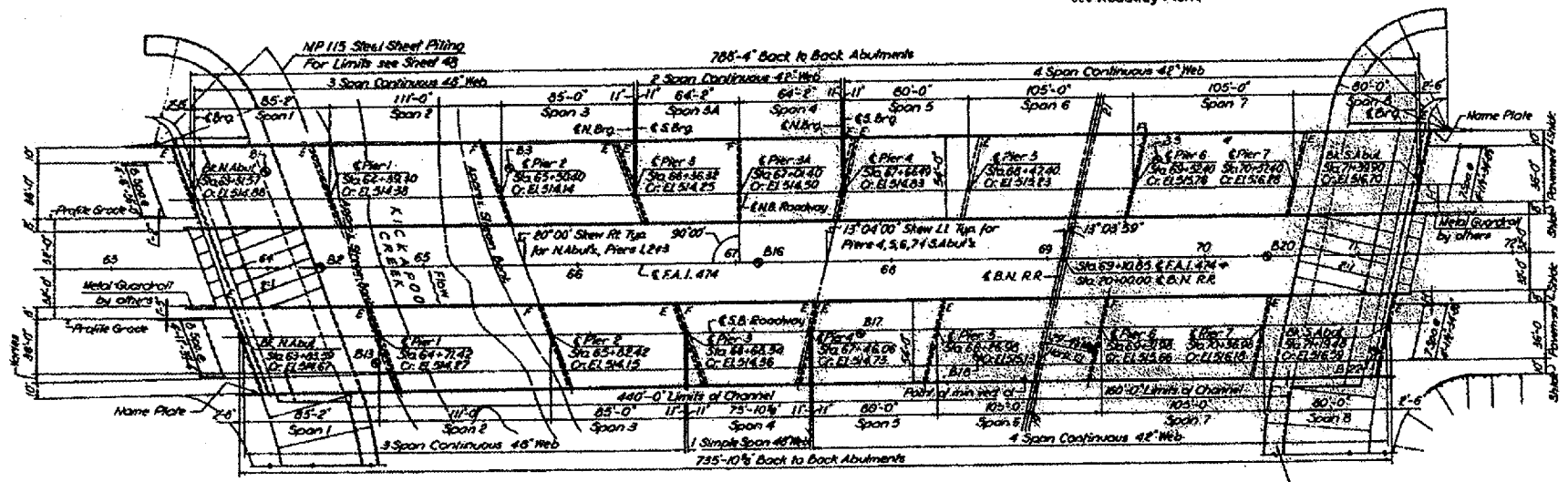
# BRIDGE NO 3 & 4- Ø72-Ø114/Ø115 I 474 OVER KICKAPOO CREEK & RAILROAD

F.A. RTE.	SECTION	COUNTY	TOTAL SHEETS	SHEET NO.
VAR	D4 BRDG PNT Ø7	VARIOUS	17	10
STA.		TO STA.		
FED. ROAD DIST. NO. 4		ILLINOIS		



**ELEVATION**

**Note X:**  
Remove unsuitable material and replace with porous granular embankment for limits of removal see Roadway Plans



**PLAN**

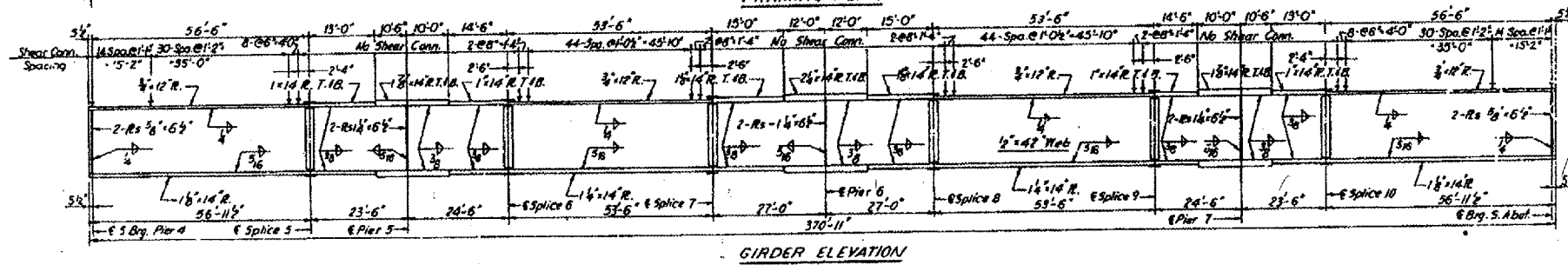
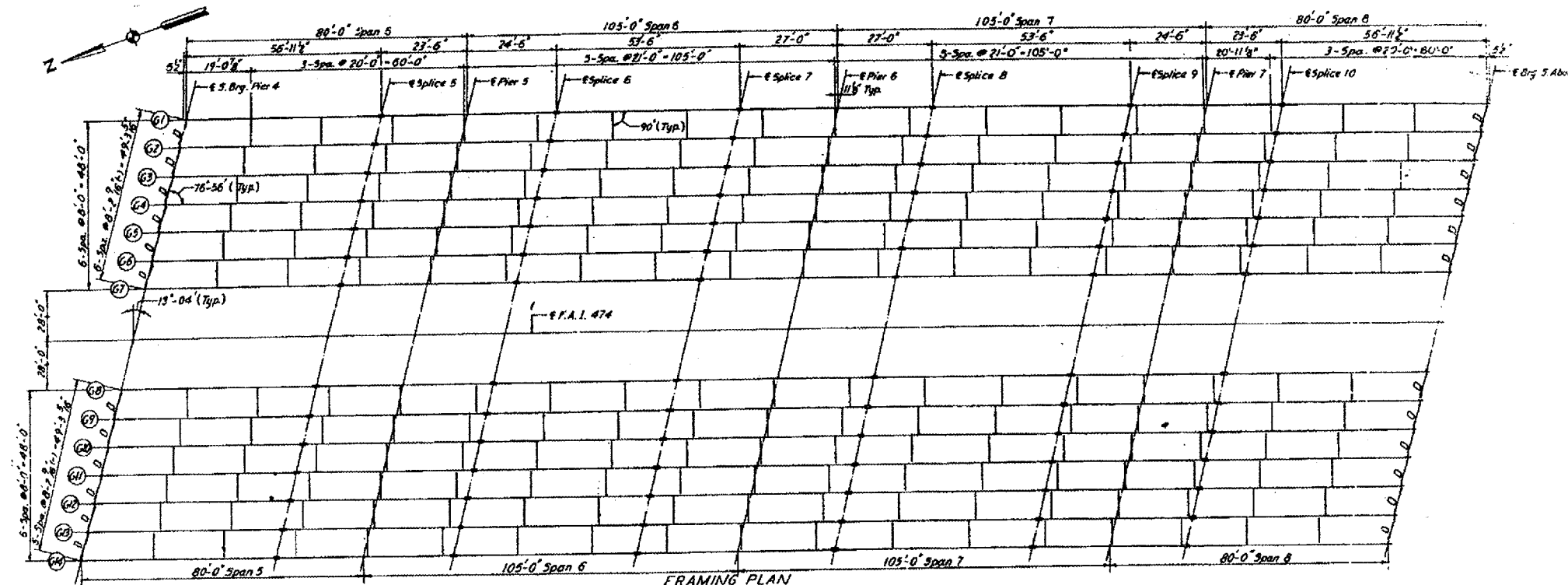
For Slope Wall Details see Sheet 48.

FOR INFORMATION ONLY

ILLINOIS DEPARTMENT OF TRANSPORTATION  
 BRIDGE NO 3 & 4  
 PLAN & ELEVATION  
 DATE 07-26-2006 DRAWN BY

# BRIDGE NO 3 & 4 - 072-0114/0115 I 474 OVER KICKAPOO CREEK & RAILROAD

F.A. RTE.	SECTION	COUNTY	TOTAL SHEETS	SHEET NO.
VAR	04 BRDG PNT 07	VARIOUS	17	11
STA.		TO STA.		
FED. ROAD DIST. NO. 4		ILLINOIS		

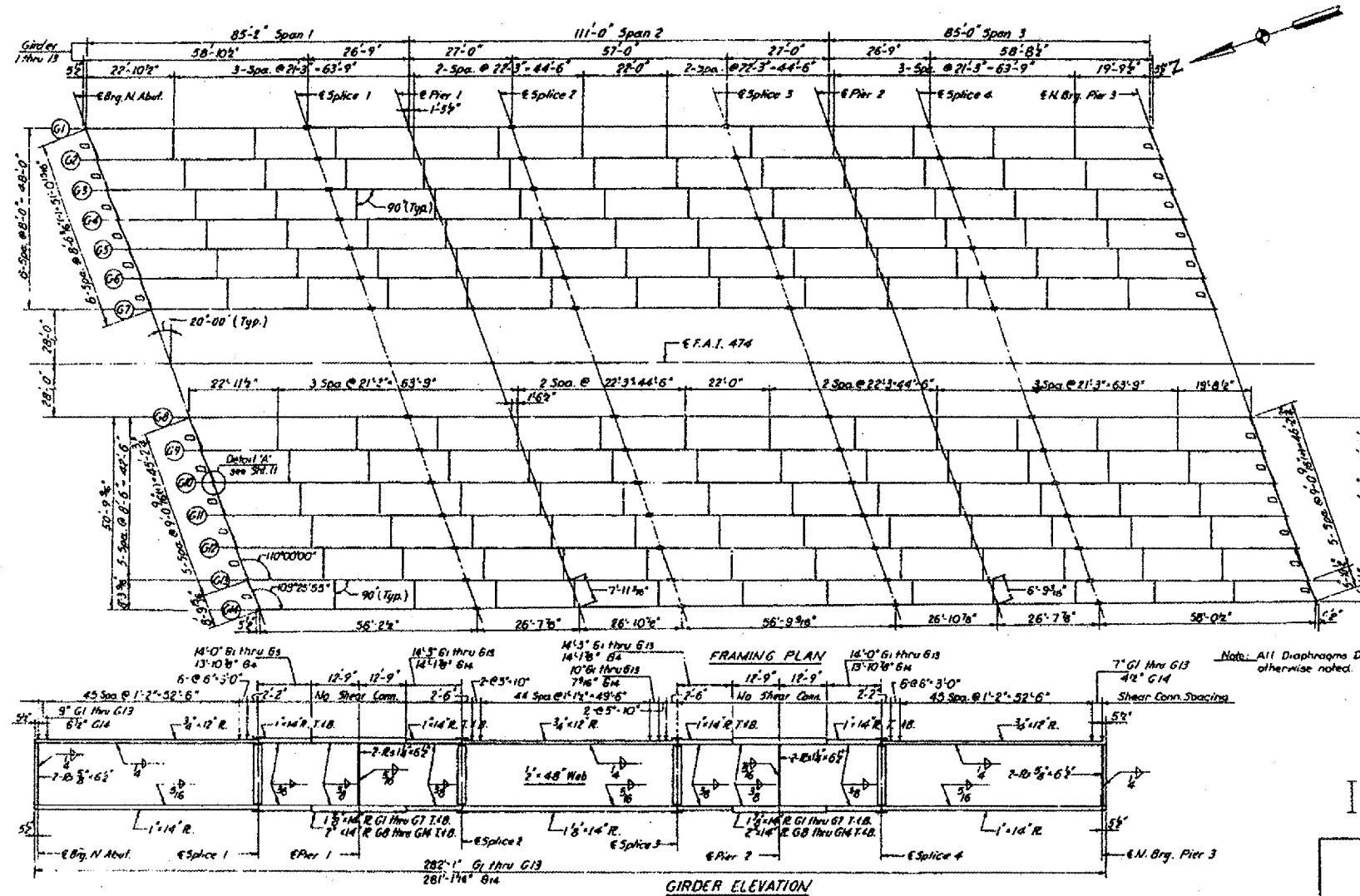


FOR  
INFORMATION ONLY

ILLINOIS DEPARTMENT OF TRANSPORTATION  
BRIDGE NO 3 & 4  
FRAMING PLAN  
DATE 07-26-2006 DRAWN BY

# BRIDGE NO 3 & 4 - 072-0114/0115 I 474 OVER KICKAPOO CREEK & RAILROAD

F.A. RTE.	SECTION	COUNTY	TOTAL SHEETS	SHEET NO.
VAR	D4 BRDG PNT 07	VARIOUS	17	12
STA.		TO STA.		
FED. ROAD DIST. NO. 4		ILLINOIS		



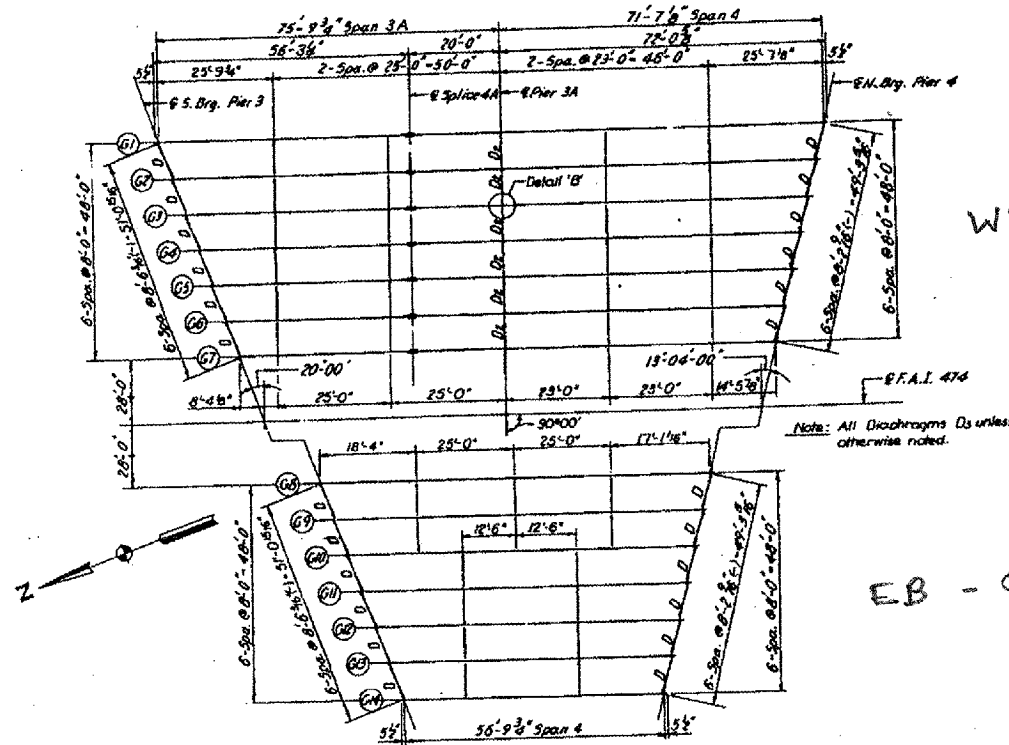
FOR  
INFORMATION ONLY

ILLINOIS DEPARTMENT OF TRANSPORTATION  
BRIDGE NO 3 & 4  
FRAMING PLAN

DATE 07-26-2006 DRAWN BY

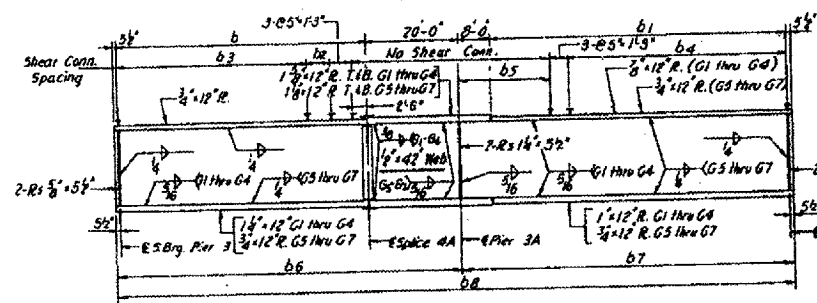
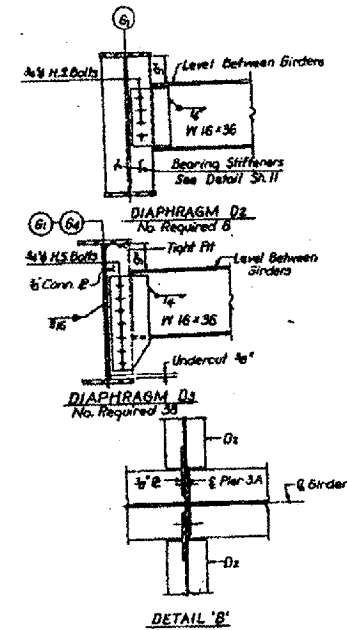
# BRIDGE NO 3 & 4 - 072-0114/0115 I 474 OVER KICKAPOO CREEK & RAILROAD

F.A. RTE.	SECTION	COUNTY	TOTAL SHEETS	SHEET NO.
VAR	04 BRDG PNT 07	VARIOUS	17	13
STA. TO STA.				
FED. ROAD DIST. NO. 4			ILLINOIS	

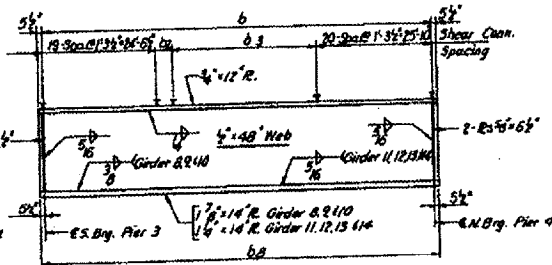


WB - 0115

EB - 0114



GIRDER ELEVATION  
Girder 1 thru 7



GIRDER ELEVATION  
Girder 8 thru 14

FOR  
INFORMATION ONLY

ILLINOIS DEPARTMENT OF TRANSPORTATION  
BRIDGE NO 3 & 4  
FRAMING PLAN

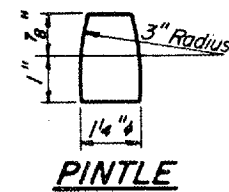
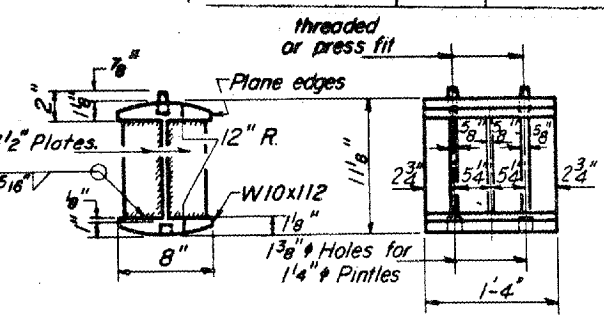
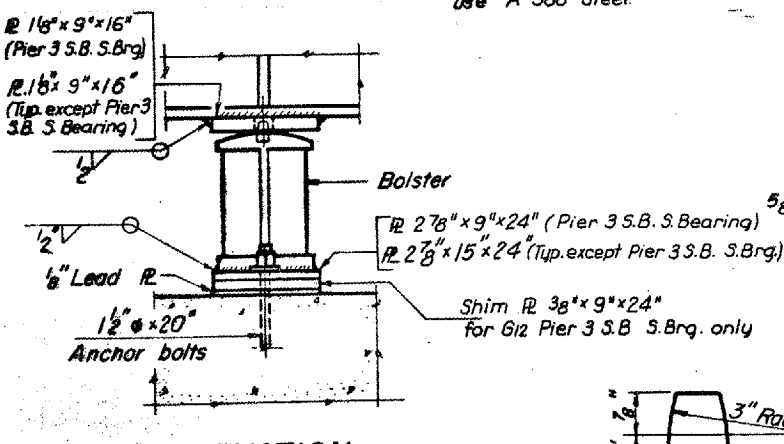
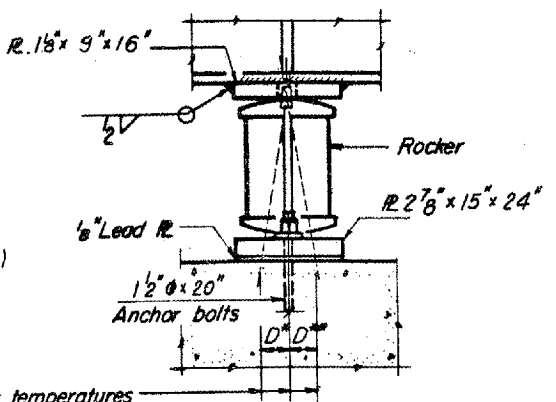
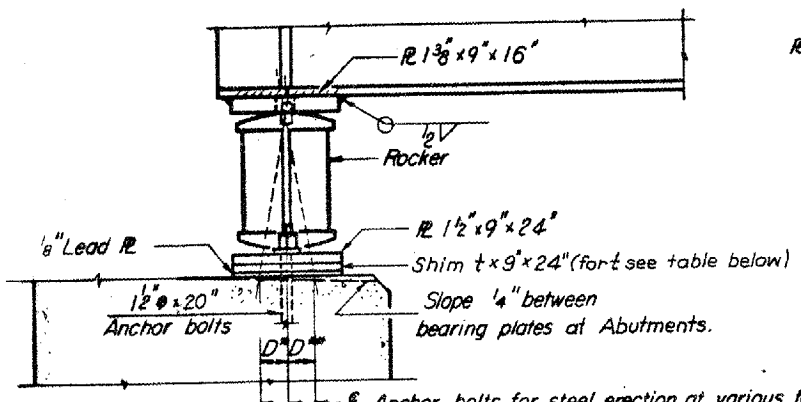
DATE 07-26-2006

DRAWN BY

# BRIDGE NO 3 & 4 - 072-0114/0115 I 474 OVER KICKAPOO CREEK & RAILROAD

F.A. RTE.	SECTION	COUNTY	TOTAL SHEETS	SHEET NO.
VAR	04 BRDG PNT 07	VARIOUS	17	19a
STA.		TO STA.		
FED. ROAD DIST. NO. 4		ILLINOIS		

**NOTE D**  
For Bearing Type II and III use A-588 Steel.



SECTION

ELEVATION

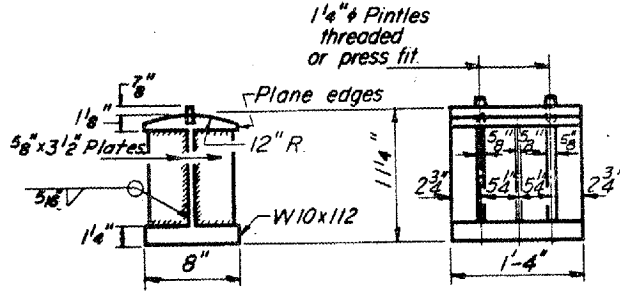
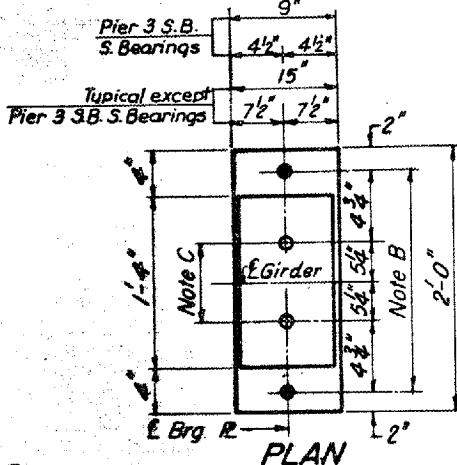
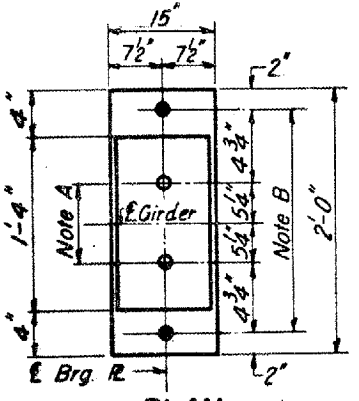
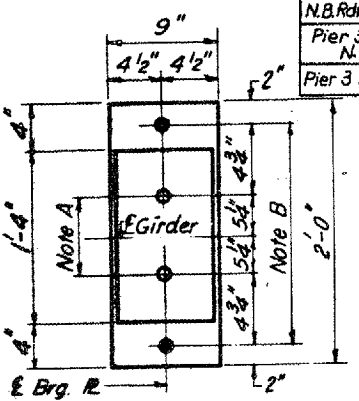
ELEVATION

ROCKER

PINTLE

SHIM PLATE THICKNESS (t)

Location	Girder					
	G2	G3	G4	G5	G6	G7
Pier 4 S.Brg. N.B.Rdwy. N.Brg.	1/8	1/8	1/8	-	-	-
Pier 3 S.B.Rdwy. N.Brg.	-	-	-	1/4	1/4	1/4
Pier 3 S.B.Rdwy. S.Brg.	-	-	-	-	-	3/8



PLAN

PLAN

PLAN

BOLSTER

**AT ABUTMENTS AND PIER 3 N.B., 3 S.B., N.BRG. & 4**

**NOTE A**  
1 3/8" Holes - 1" deep in top R. for pintles. Thread or press fit pintles into bottom R.

**AT PIER 1, 5 & 7 TYPE II**

**NOTE B**  
2" Holes for 1 1/2" anchor bolts. 5/16" x 2 1/2" x 2 1/2" R. Washers under nut.

**AT PIER 2, 3A, 6 AND PIER 3 S.B. S.BEARINGS TYPE III**

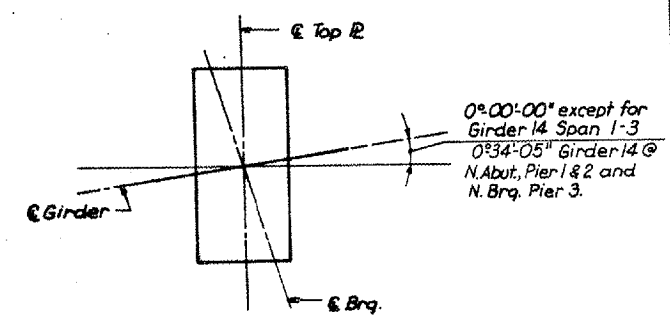
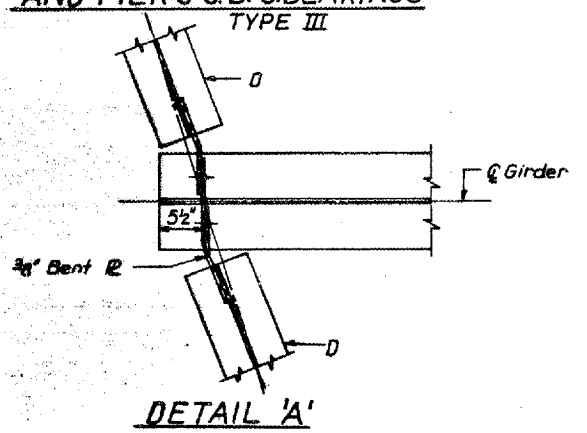
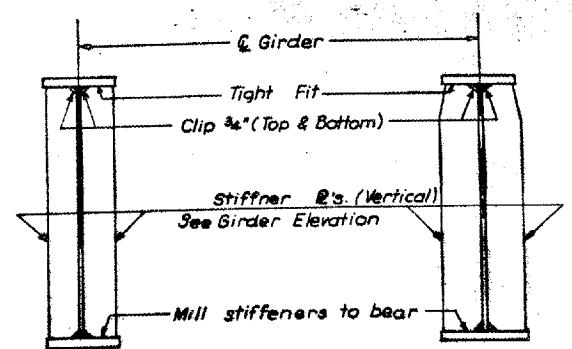
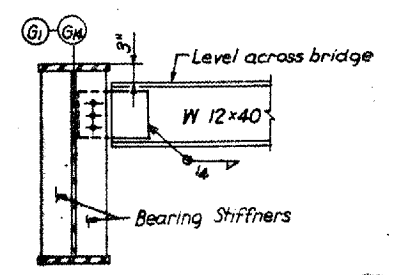
**NOTE C**  
1 3/8" Holes 1" deep in top R. only for 1 1/4" pintles.

**NOTES ON SETTING OF ANCHOR BOLTS AT EXP. BRGS.**

- a) D\* (Side of brg away from fixed brg.)  
D\* = 1/8" per each 100' of expansion for every 15° fall below the normal temp of 50°F
- D\*\* (Side of brg. toward fixed brg.)  
D\*\* = 1/8" per each 100' of expansion for every 15° rise above the normal temp of 50°F

**NOTE E**  
S. Bearing Pier 3 or N. Bearing Pier 4 should have a hold down Strap. See Detail on Sheet 11.

- b) After Girders have been erected and dimensions D\* or D\*\* determined, holes shall be drilled and anchor bolts shall be grouted in place. All fixed anchor bolts may be built into the masonry.



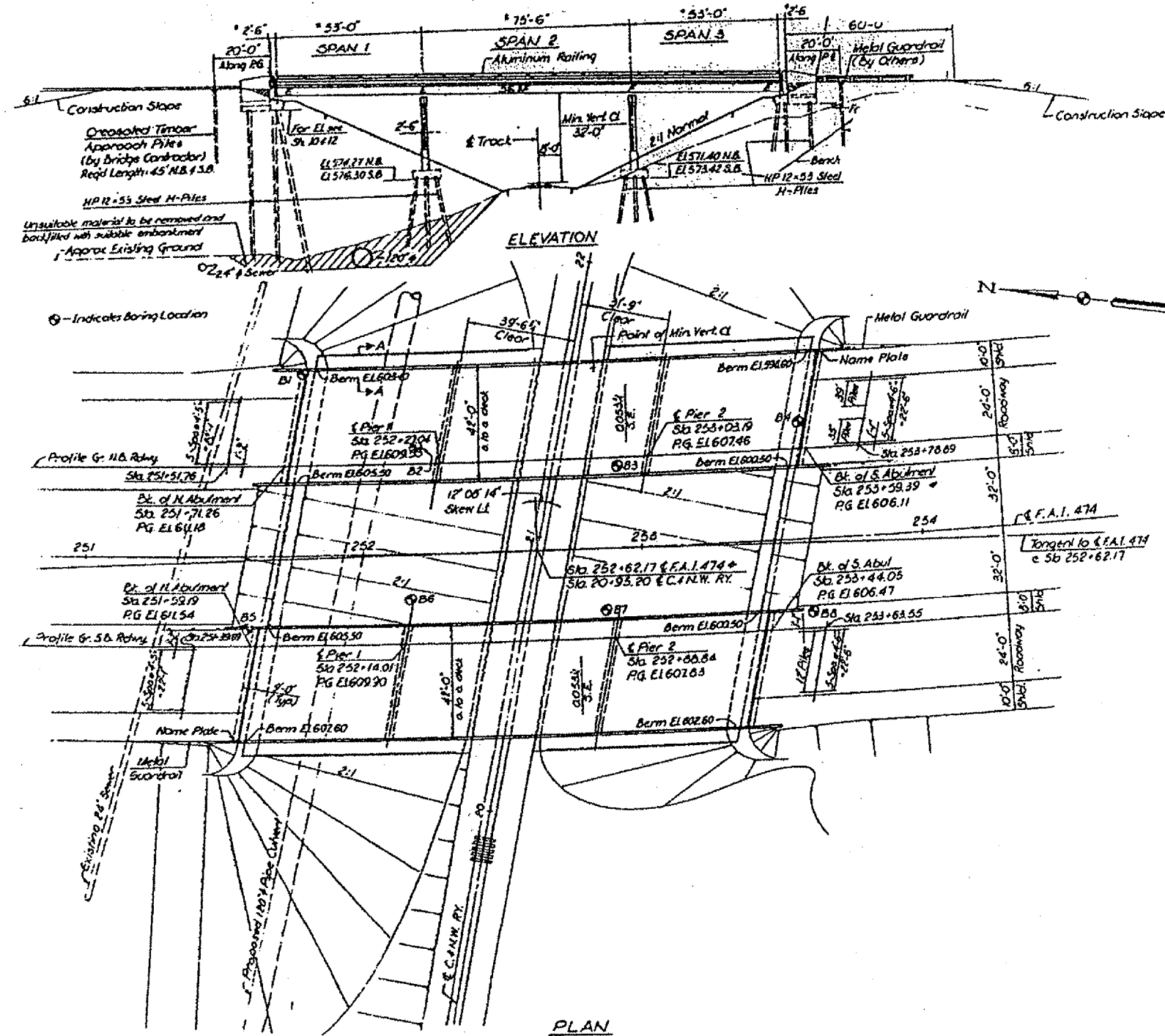
FOR INFORMATION ONLY

STATE OF ILLINOIS  
DEPARTMENT OF TRANSPORTATION  
STRUCTURAL STEEL  
F.A.I. ROUTE 474  
OVER  
KICKAPOO CREEK & B.N. R.R.  
STA. 67 + 00.00

Add SHEET

# BRIDGE NO 5 & 6 - 072-0124/125 I 474 OVER RAILROAD

F.A. RTE.	SECTION	COUNTY	TOTAL SHEETS	SHEET NO.
VAR	D4 BROG PNT 07	VARIOUS	17	14
STA. TO STA.				
FED. ROAD DIST. NO. 4			ILLINOIS	



FOR  
INFORMATION ONLY

ILLINOIS DEPARTMENT OF TRANSPORTATION  
BRIDGE NO 5 & 6  
PLAN & ELEVATION

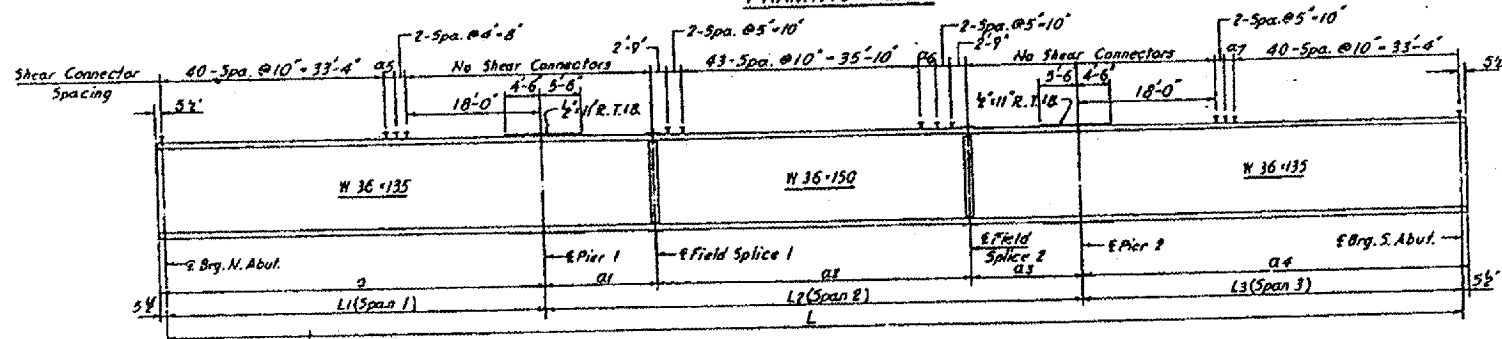
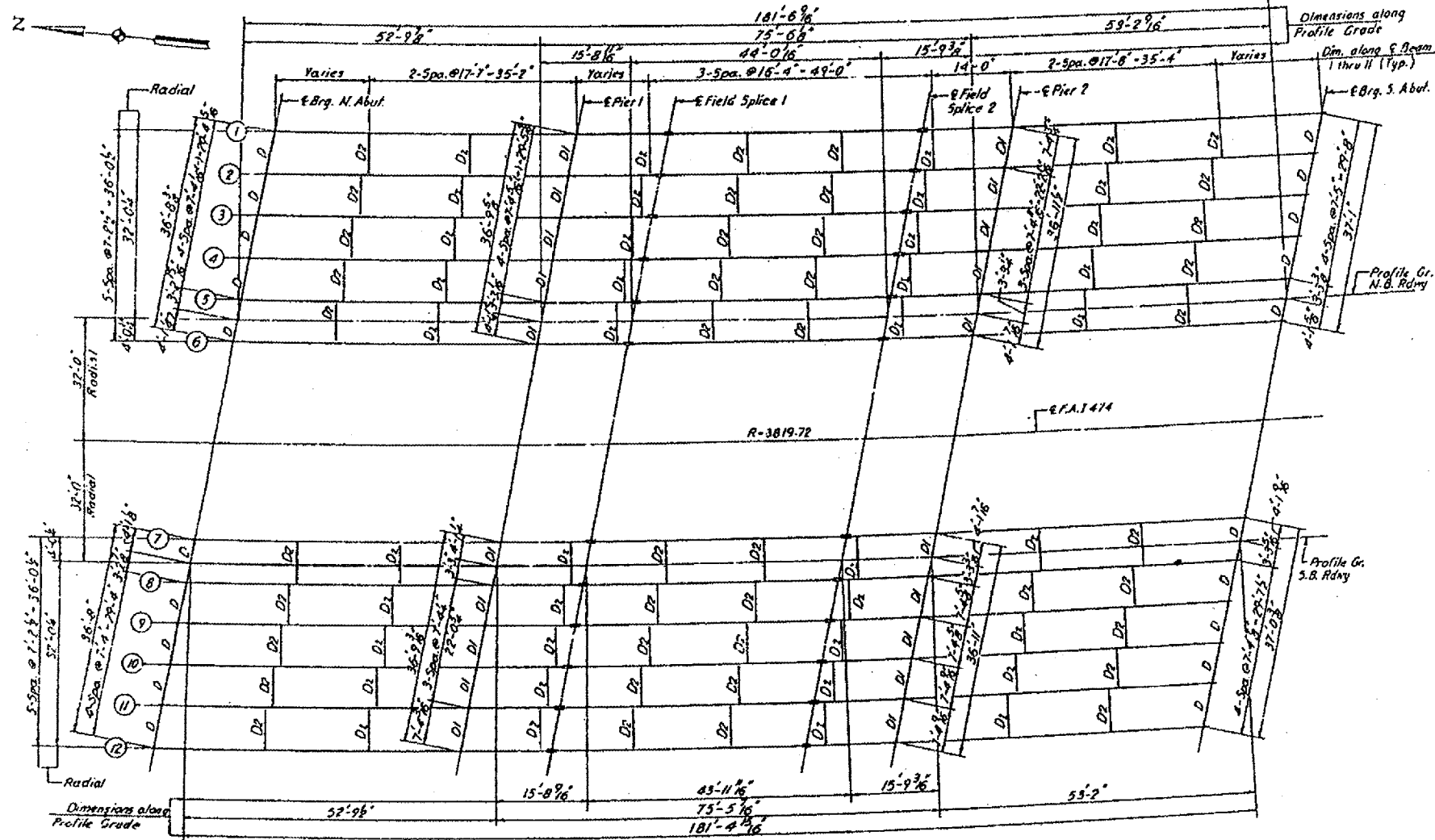
DATE 07-26-2006

DRAWN BY



# BRIDGE NO 5 & 6 - 072-0124/125 I 474 OVER RAILROAD

F.A. RTE.	SECTION	COUNTY	TOTAL SHEETS	SHEET NO.
VAR	D4 BRDG PNT 07	VARIOUS	17	15
STA.		TO STA.		
FED. ROAD DIST. NO. 4		ILLINOIS		



FOR  
INFORMATION ONLY

ILLINOIS DEPARTMENT OF TRANSPORTATION  
BRIDGE NO 5 & 6  
FRAMING PLAN

DATE 07-26-2006 DRAWN BY

# BRIDGE NO 5 & 6 - 072-0124/125 I 474 OVER RAILROAD

F.A. RTE.	SECTION	COUNTY	TOTAL SHEETS	SHEET NO.
VAR	D4 BRDG PNT 07	VARIOUS	17	15a
STA.		TO STA.		
FED. ROAD DIST. NO. 4		ILLINOIS		

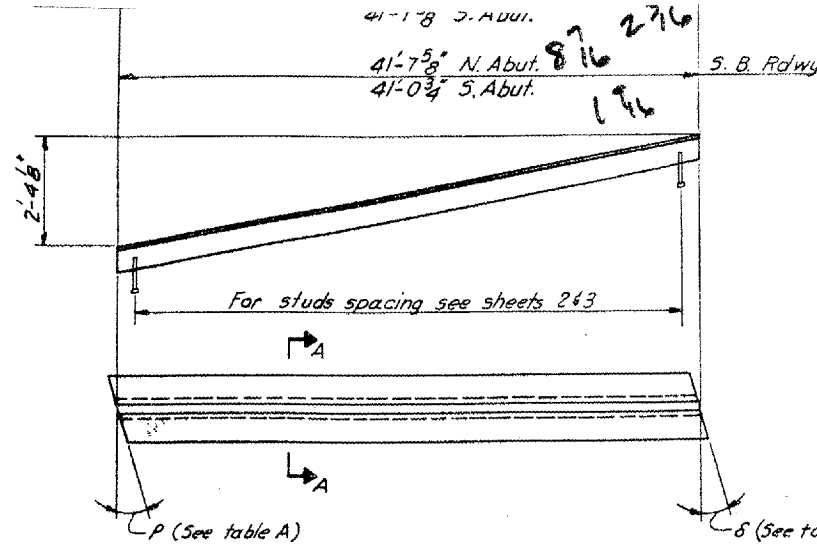
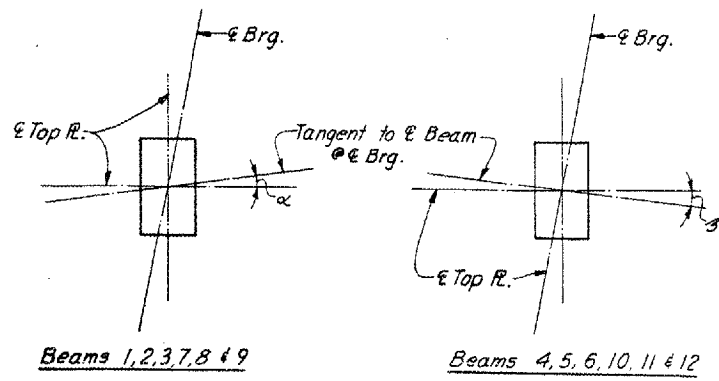


TABLE A

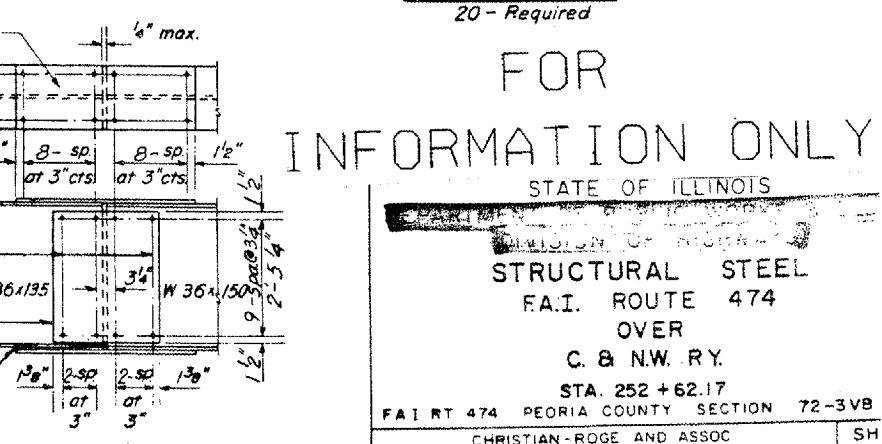
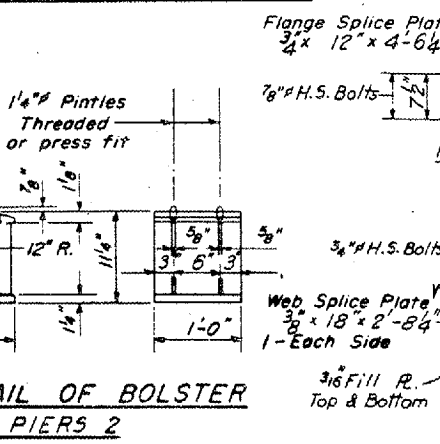
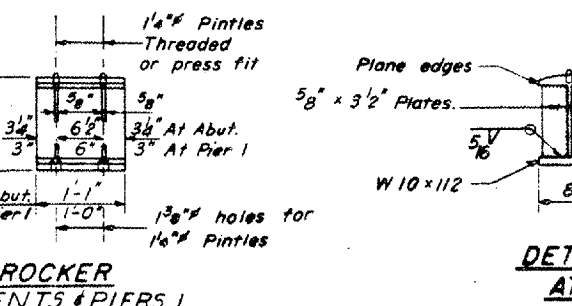
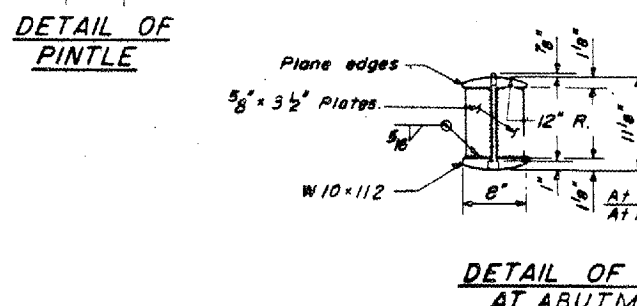
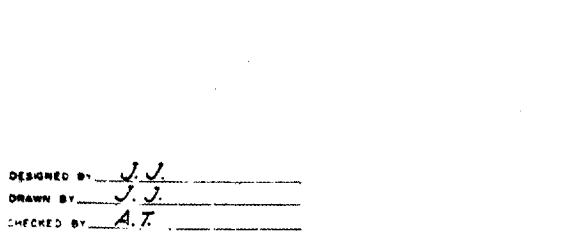
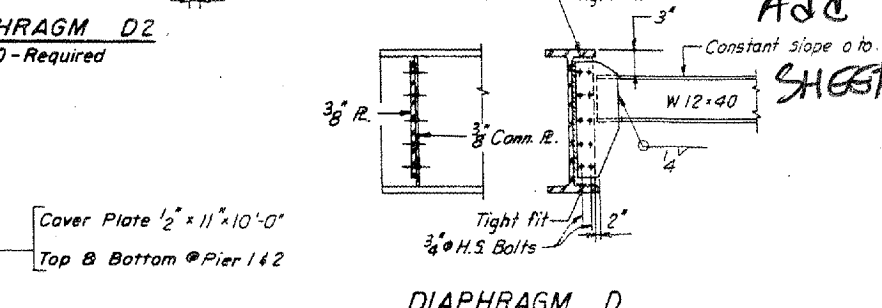
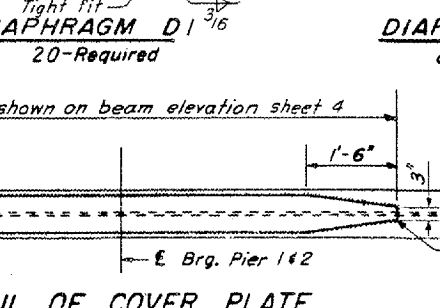
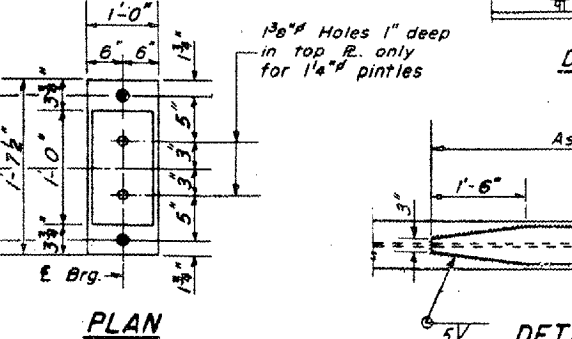
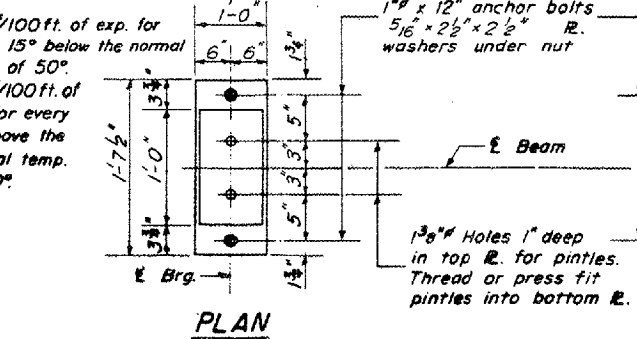
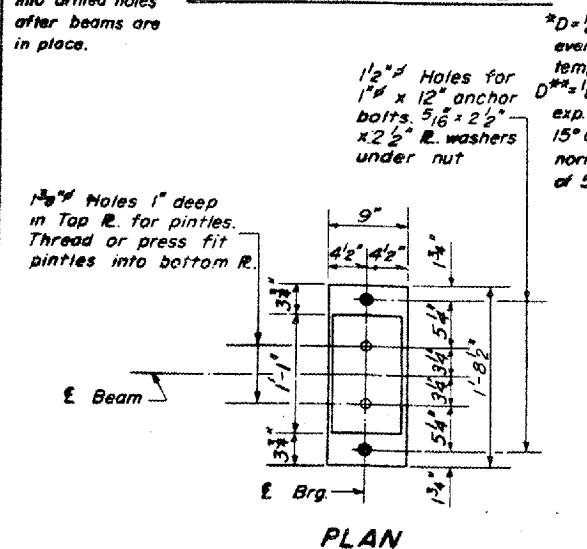
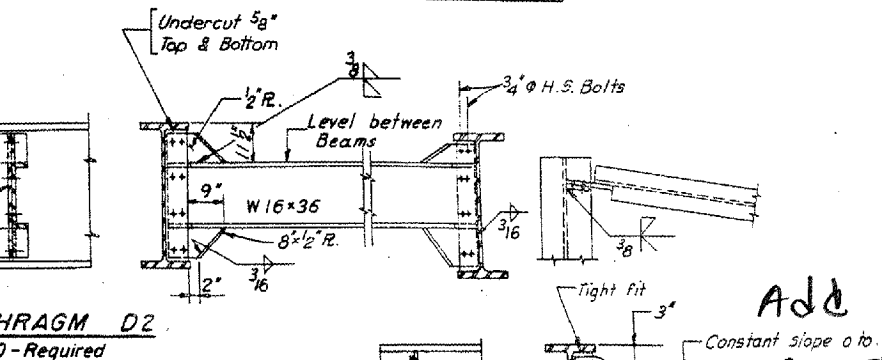
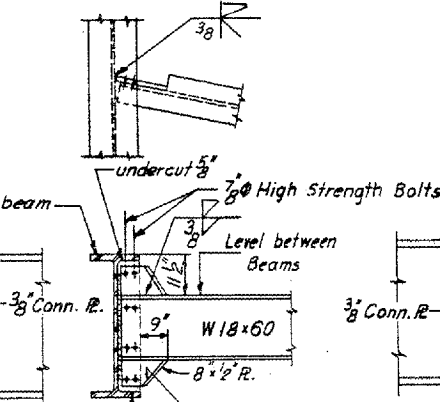
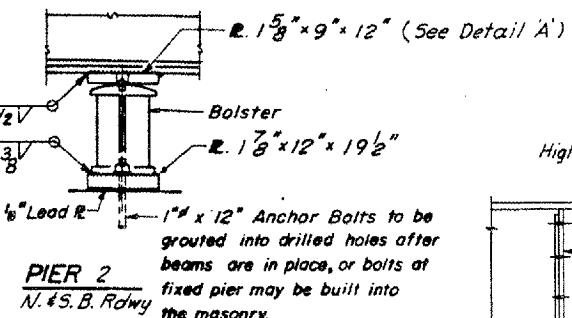
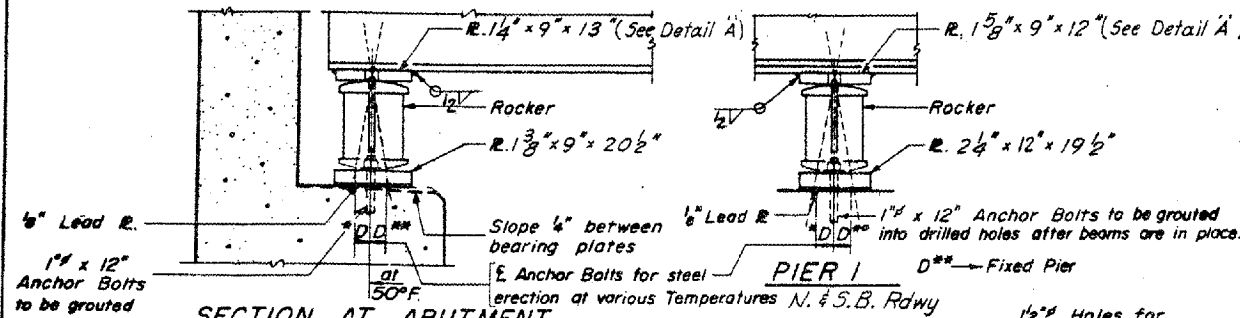
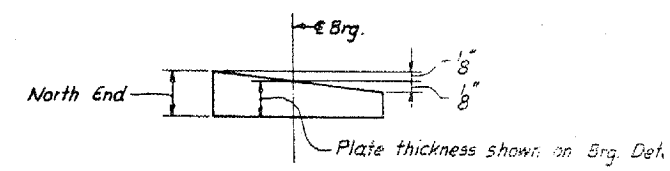
N.B. Rdwy	S.B. Rdwy	Angle P	Angle delta
N. Abut.		10°-48'	10°-47'
S. Abut.		13°-48'	13°-33'
	N. Abut.	10°-32'	10°-32'
	S. Abut.	13°-27'	13°-23'



Beam	E Brg. N. Abut.		E Pier 1		E Pier 2		E Brg. S. Abut.	
	Angle alpha	Angle beta	Angle alpha	Angle beta	Angle alpha	Angle beta	Angle alpha	Angle beta
1	0°-03'-16		0°-03'-38		0°-03'-47		0°-04'-31	
2	0°-02'-00		0°-02'-17		0°-02'-17		0°-02'-55	
3	0°-00'-44		0°-00'-55		0°-00'-47		0°-01'-19	
4		0°-00'-31		0°-00'-26		0°-00'-42		0°-00'-16
5		0°-01'-46		0°-01'-47		0°-02'-11		0°-01'-51
6		0°-03'-01		0°-03'-08		0°-03'-40		0°-03'-26
7	0°-03'-27		0°-03'-37		0°-04'-02		0°-04'-32	
8	0°-02'-00		0°-02'-19		0°-02'-36		0°-03'-01	
9	0°-01'-00		0°-01'-01		0°-01'-10		0°-01'-29	
10		0°-00'-27		0°-00'-16		0°-00'-15		0°-00'-02
11		0°-01'-22		0°-01'-33		0°-01'-40		0°-01'-42
12		0°-02'-33		0°-02'-50		0°-03'-04		0°-03'-02

EXPANSION GUARD ANGLES  
For section A-A see sheet 3

DETAIL OF TOP BEARING PLATE TO BEAM CONNECTION  
See table for angles



DESIGNED BY J.J.  
DRAWN BY J.J.  
CHECKED BY A.T.

DETAIL OF ROCKER AT ABUTMENTS & PIERS 1

DETAIL OF BOLSTER AT PIERS 2

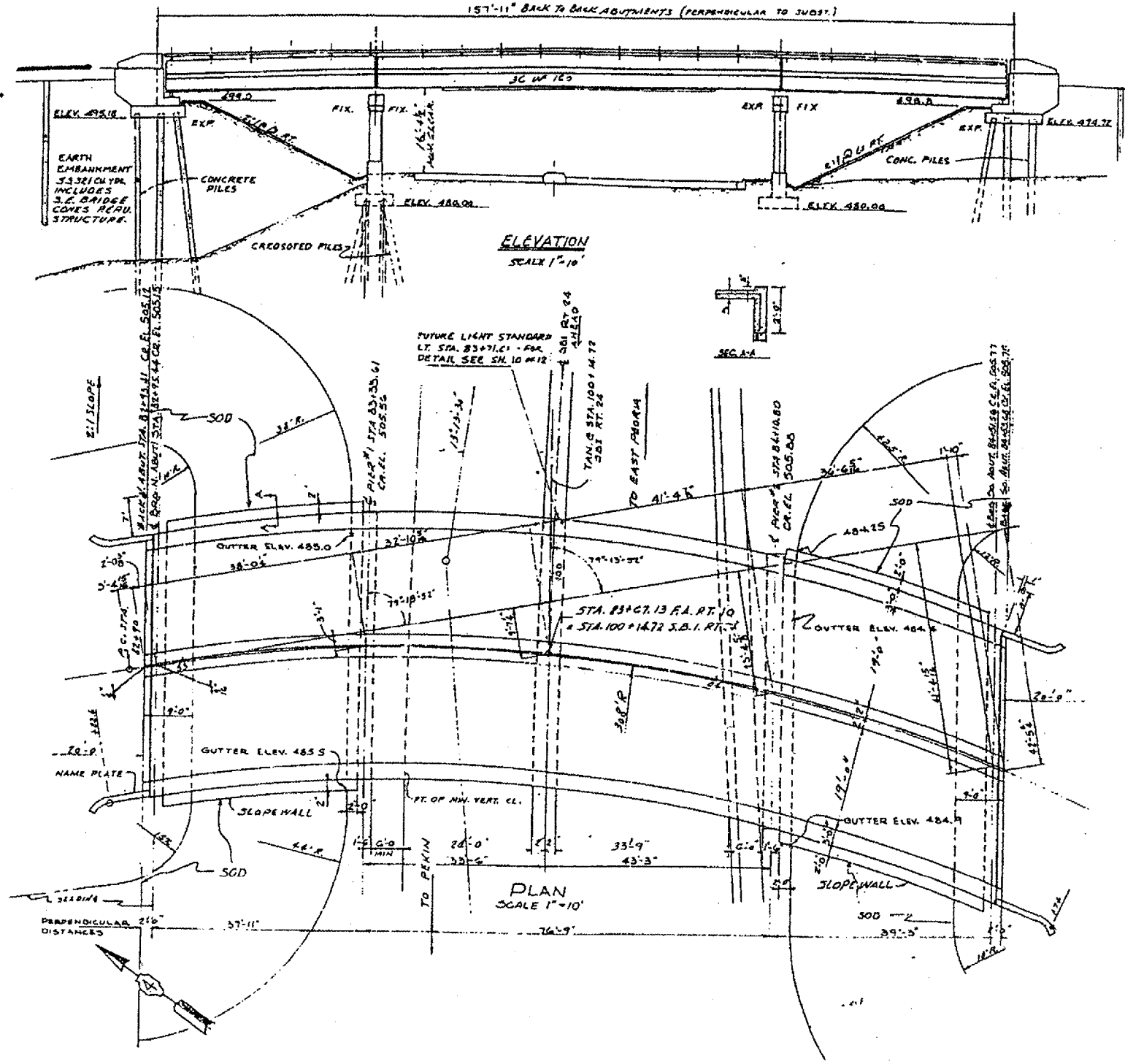
DETAIL OF SPLICE 1 & 2

FOR INFORMATION ONLY

STATE OF ILLINOIS  
DIVISION OF HIGHWAYS  
STRUCTURAL STEEL  
F.A.I. ROUTE 474  
OVER  
C. & N.W. RY.  
STA. 252 + 62.17  
F.A.I. RT 474 PEORIA COUNTY SECTION 72-3VB  
CHRISTIAN-ROGE AND ASSOC  
ENGINEERS  
CHICAGO ILLINOIS

# BRIDGE NO 7- THIS STRUCTURE DELETED

F.A. RTE.	SECTION	COUNTY	TOTAL SHEETS	SHEET NO.
VAR	D4 BRDG PNT 07	VARIOUS	17	16
STA.		TO STA.		
FED. ROAD DIST. NO. 4		ILLINOIS		



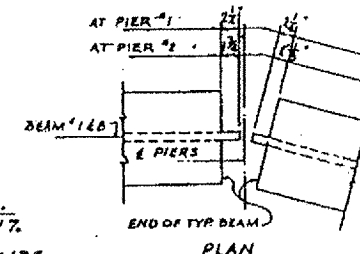
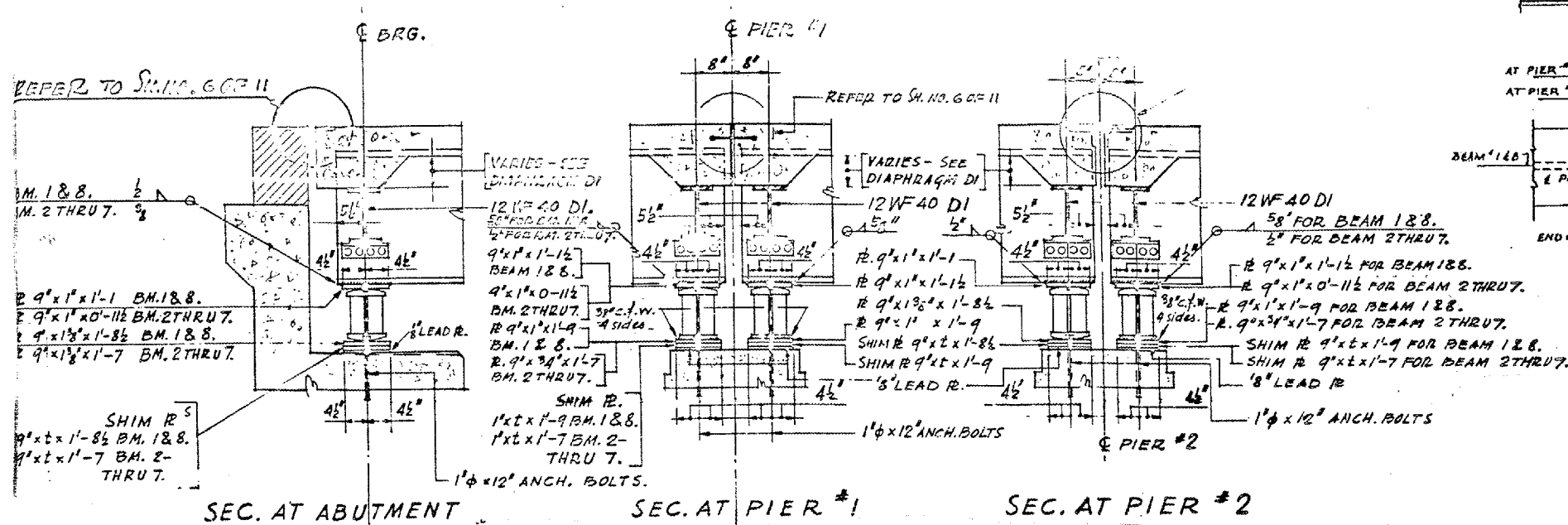
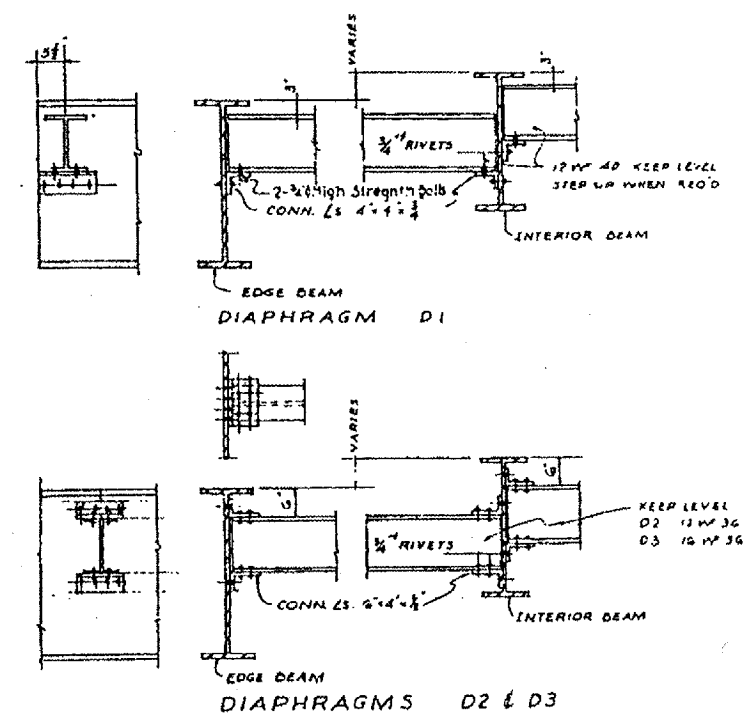
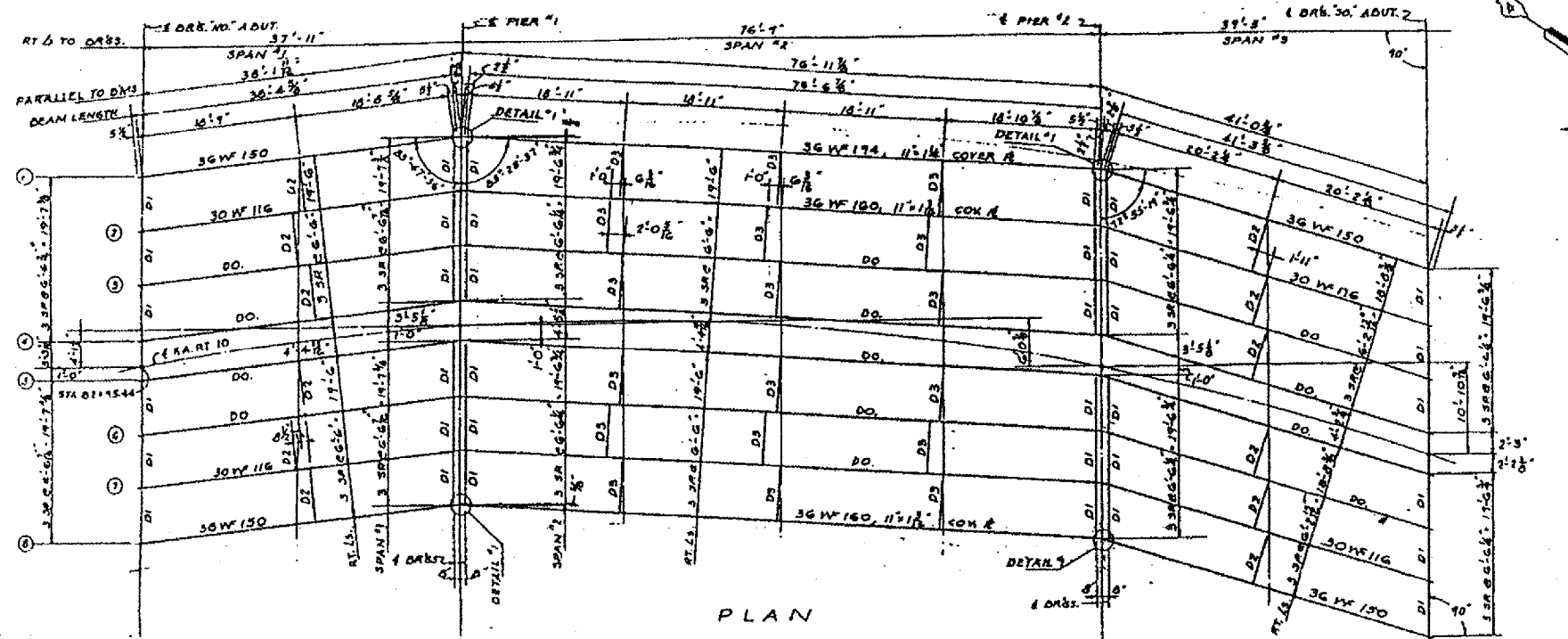
FOR  
INFORMATION ONLY

ILLINOIS DEPARTMENT OF TRANSPORTATION  
BRIDGE NO 7  
PLAN & ELEVATION

DATE 07-26-2006 DRAWN BY

# BRIDGE NO 7 - THIS STRUCTURE DELETED

F.A. RTE.	SECTION	COUNTY	TOTAL SHEETS	SHEET NO.
VAR	04 BRDG PNT 07	VARIOUS	17	17
STA.		TO STA.		
FED. ROAD DIST. NO. 4		ILLINOIS		



FOR INFORMATION ONLY

ILLINOIS DEPARTMENT OF TRANSPORTATION  
 BRIDGE NO 7  
 FRAMING PLAN  
 DATE 07-26-2006  
 DRAWN BY