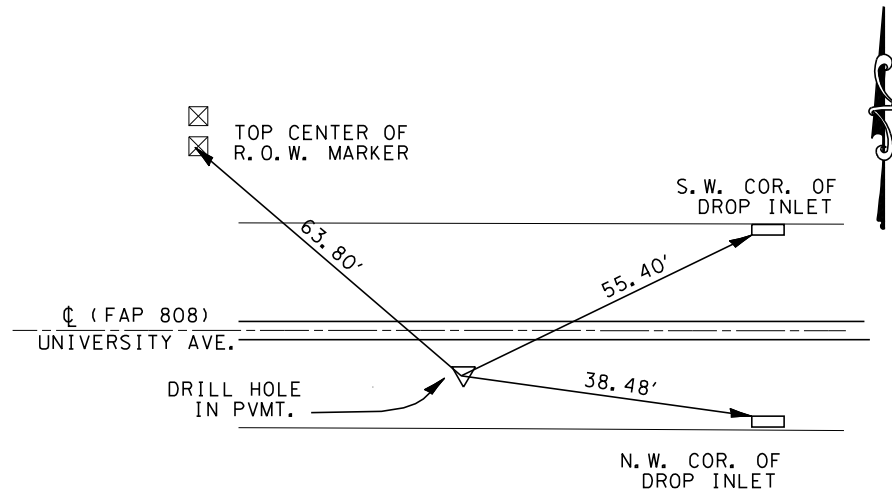


F.A.P. RTE.	SECTION	COUNTY	TOTAL SHEETS	SHEET NO.
808	(3R,3)RS	CHAMPAIGN	47	21
STA.		TO STA.		
FED. ROAD DIST. NO.	ILLINOIS	FED. AID PROJECT		

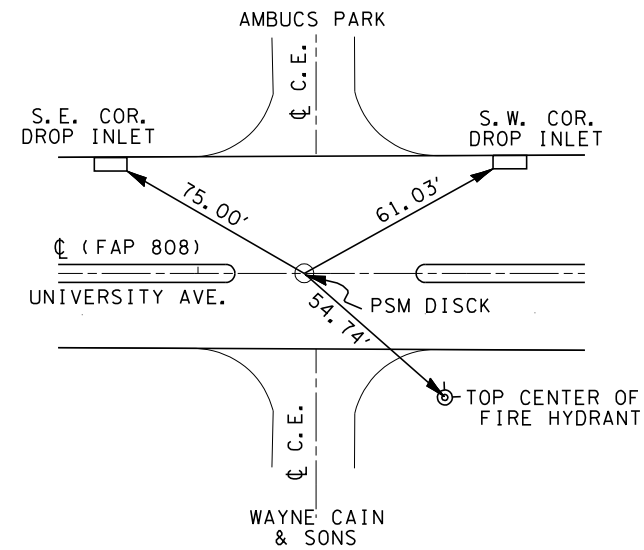
(RX,48Z-1)RS-1 & (47R-1)RS

TIE POINT LAYOUT

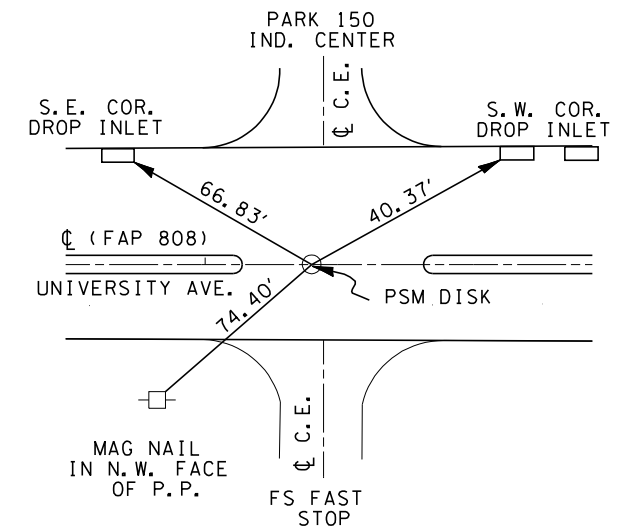
P.I. #16 STA. 32 + 17.98 RT. 11.61'



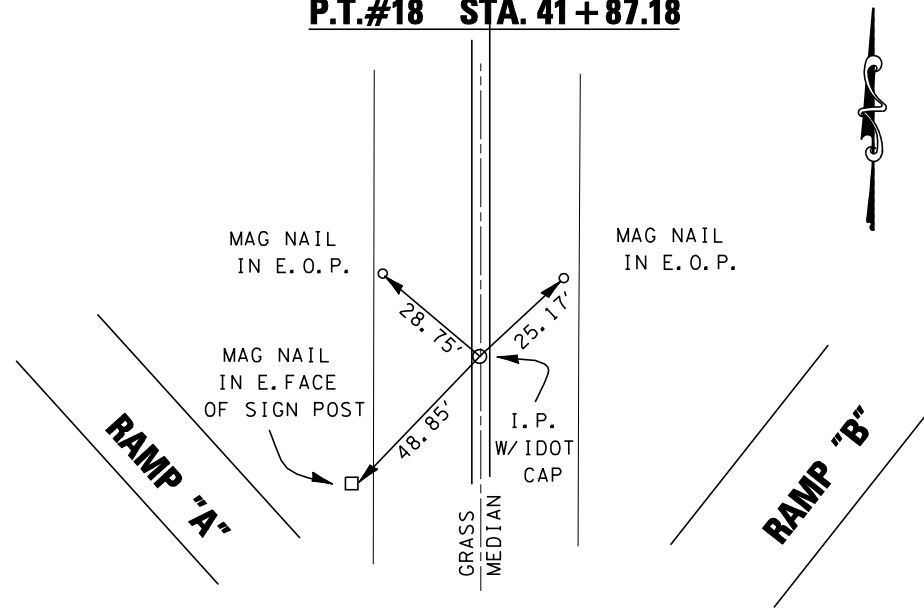
P.T. #6 STA. 35 + 15.59



P.C. #7 STA. EQ. STA. 1 + 80.75 AH = STA. 46 + 35.07 BK



P.T.#18 STA. 41 + 87.18



P.O.T. #21 STA. 52 + 70

