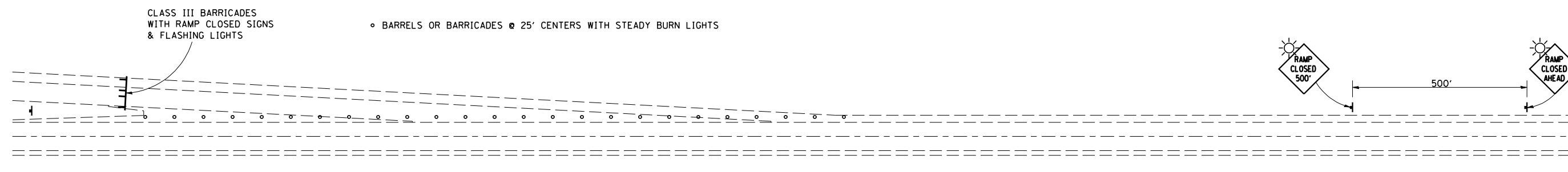


F.A.P. RTE.	SECTION	COUNTY	TOTAL SHEETS	SHEET NO.
808	(3R,3X)RS	CHAMPAIGN	47	44

## TYPICAL APPLICATION OF TRAFFIC CONTROL DEVICES FOR RAMP CLOSURE



NOTE: NOT TO SCALE

### GENERAL NOTES

THESE ITEMS WILL NOT BE PAID FOR SEPARATELY BUT SHALL BE CONSIDERED AS INCLUDED IN THE CONTRACT UNIT PRICE FOR TRAFFIC CONTROL & PROTECTION STANDARD 701601.

THE FOLLOWING SIGNS WILL NOT BE NEEDED AS PART OF THIS SET-UP OF TRAFFIC CONTROL AND PROTECTION (SPECIAL):

- 1-WORK ZONE SPEED LIMIT SIGNS
- 2-CONSTRUCTION SPEED LIMIT SIGNS
- 3-END WORK ZONE SPEED LIMIT SIGNS

STEADY BURN LIGHTS ARE NOT REQUIRED FOR DAYTIME OPERATIONS.

CONTACT THE DISTRICT TRAFFIC OPERATIONS ENGINEER AT 217-465-4181, ONE WEEK PRIOR TO CLOSING THE RAMP.