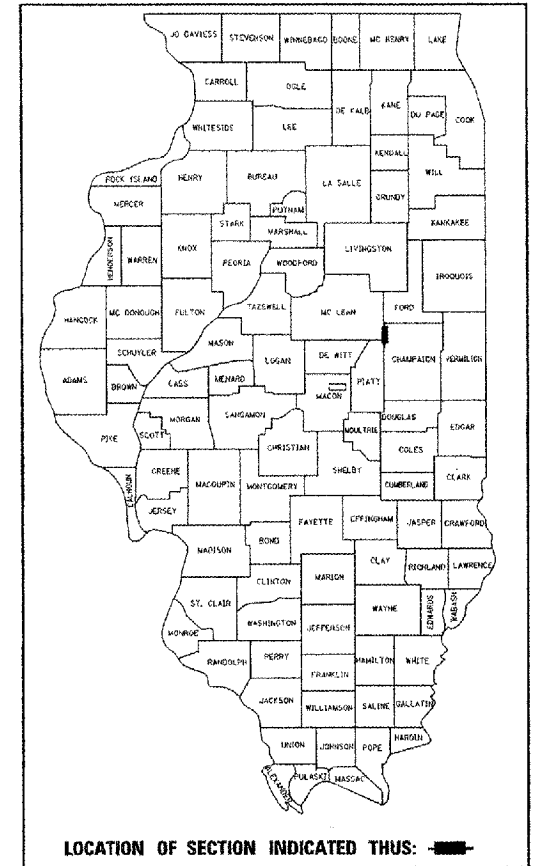


F.A.P. RTE.	SECTION	COUNTY	TOTAL SHEETS	SHEET NO.
709	104BR-1	CHAMPAIGN	24	1
FED. ROAD DIST. NO.		ILLINOIS FED. AID PROJECT		

STATE OF ILLINOIS
DEPARTMENT OF TRANSPORTATION
DIVISION OF HIGHWAYS
**PLANS FOR PROPOSED
FEDERAL AID HIGHWAY**

D-95-056-02

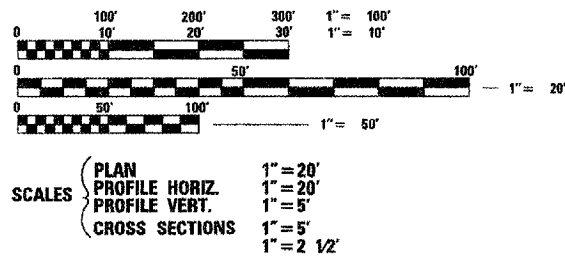


LOCATION OF SECTION INDICATED THUS:

FOR INDEX OF SHEETS, SEE SHEET NO. 2
FOR LIST OF STANDARDS, SEE SHEET NO. 2
FOR SUMMARY OF QUANTITIES, SEE SHEET NO. 3

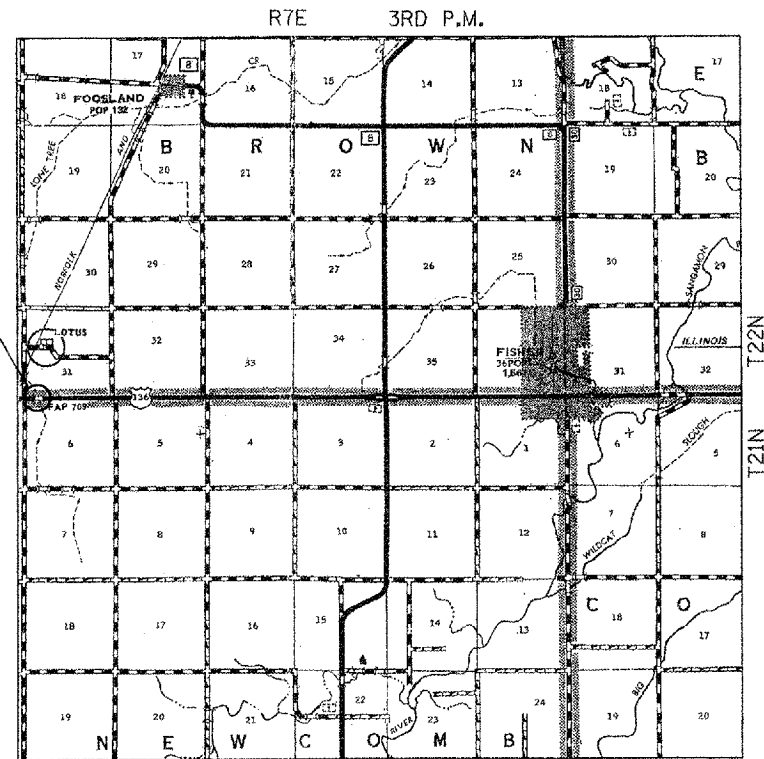
F.A.P. ROUTE 709 (US ROUTE 136)
SECTION 104BR-1
CHAMPAIGN COUNTY
PROJECT NO. BHF-0709 (021)
C-95-104-02
BRIDGE REHABILITATION
LONE TREE CREEK WEST OF FISHER

PROJECT ENGINEER: KENSIL GARNETT
CONSULTANT LIAISON: NANCY FASIG
PHONE: 217-465-4181



FULL SIZE PLANS HAVE BEEN PREPARED USING STANDARD ENGINEERING SCALES, REDUCED SIZED PLANS WILL NOT CONFORM TO STANDARD SCALES, IN MAKING MEASUREMENTS ON REDUCED PLANS, THE ABOVE SCALES MAY BE USED.

PROJECT LOCATION
SECTION 104BR-1
BRIDGE SUPERSTRUCTURE
REPLACEMENT SN 010-0058,
STA 1458+06.74
43'-0" BK TO BK ABUTMENTS
32'-0" STRUCTURE WIDTH

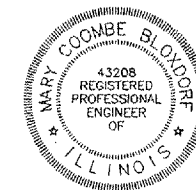


LOCATION MAP NOT TO SCALE

GROSS AND NET LENGTH OF PROJECT = 102.08 FEET = 0.019 MILES ADT = 1600 (2005)

STATE OF ILLINOIS
DEPARTMENT OF TRANSPORTATION
DIVISION OF HIGHWAYS

SUBMITTED 10/20 2006
Joseph E. Kline, Inc.
DEPUTY DIRECTOR OF HIGHWAYS, REGION THREE ENGINEER
December 8, 2006
Eric E. Haral
INTERIM ENGINEER OF DESIGN AND ENVIRONMENT
December 8, 2006
Milton R. Sees, P.E.
DIRECTOR, DIVISION OF HIGHWAYS



Mary Coombe Bloxdorf
MARY COOMBE BLOXDORF, P.E., S.E.
DATE October 17, 2006
EXPIRES NOVEMBER 30, 2007

FOR UNDERGROUND UTILITY
LOCATIONS CALL
J.U.L.I.E. TOLL FREE
1-800-892-0123

CONTRACT NO. 70262

COOMBE-BLOXDORF P.C.
Engineers / Land Surveyors
Springfield, Illinois
Design Firm License No. 184-002703