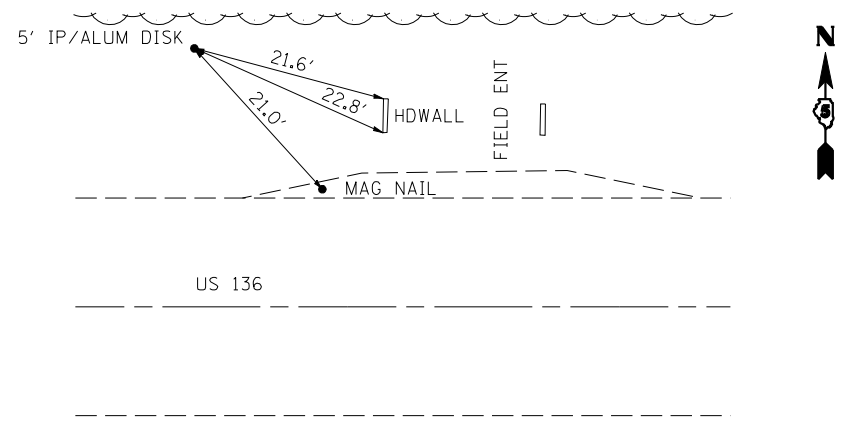
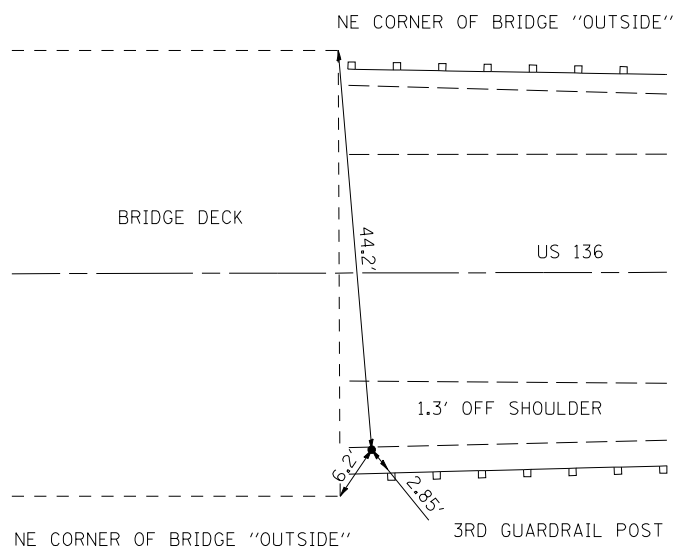


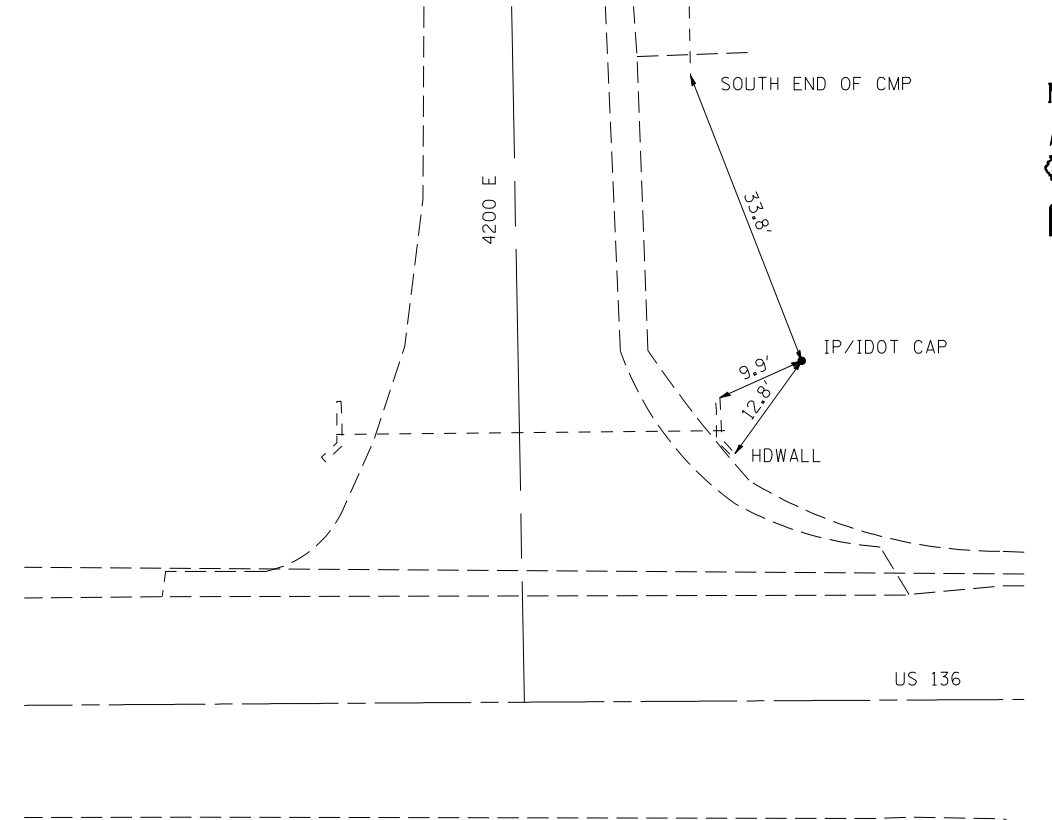
F.A.P. RTE.	SECTION	COUNTY	TOTAL SHEETS	SHEET NO.
709	104BR-1	CHAMPAIGN	24	6
STA.		TO STA.		
FED. ROAD DIST. NO.	ILLINOIS	FED. AID PROJECT		



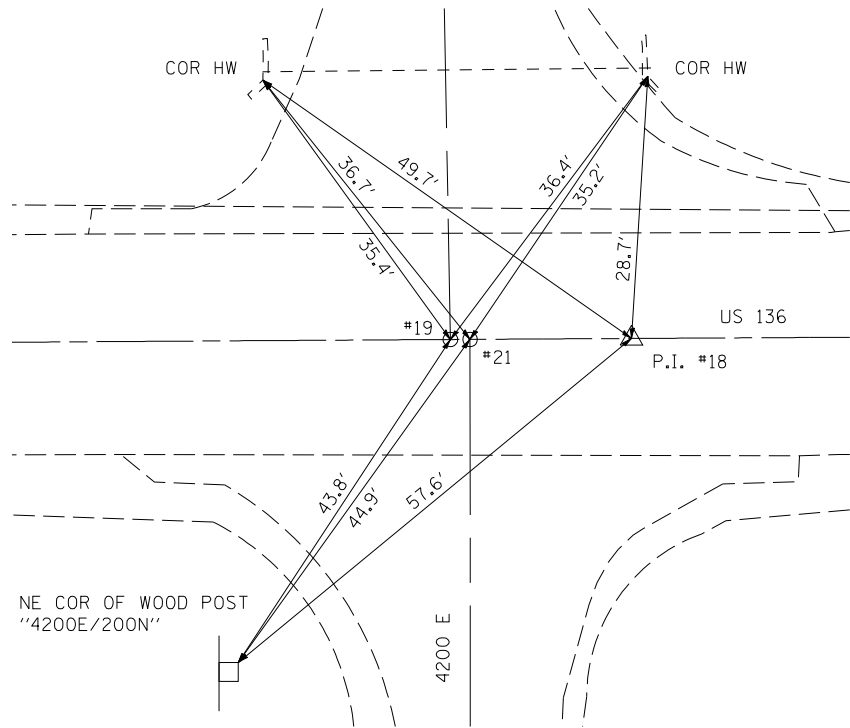
T.S. 400
STA 1469+72.743
33.1' LT



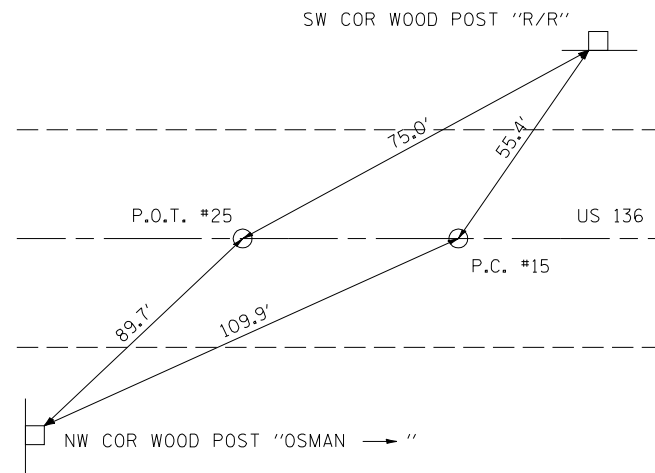
T.S. 401
STA 1458+33.84
20.37' RT



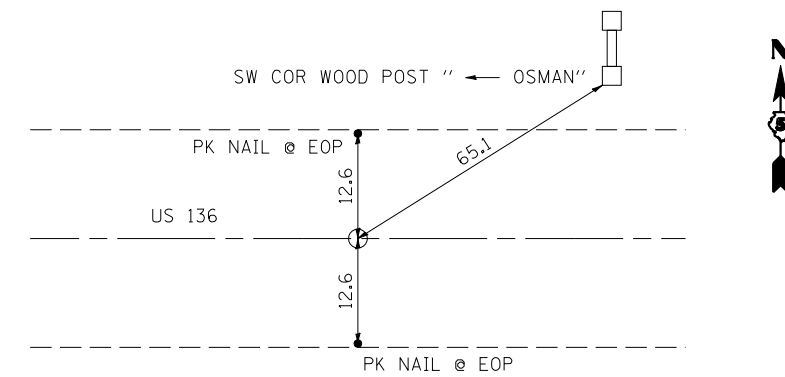
T.S. 402
STA 1450+60.30
37.35' LT



P.I. #18 STA 1450+50.00
AND INTERSECTION C.R. 4200 E / US 136



P.O.T. #25 STA 1448+24.43
AND P.C. #15 STA 1448+45.00



PT #16 STA 1452+55.00

PLOT DATE = 10/17/2006
 FILE NAME = c:\projects\104BR-1\submit_10.13.06\dgn\cross-ties.dgn
 PLOT SCALE = 2:1 (7/5' / IN.)
 USER NAME = kgjrb

COOMBE-BLOXDORF P.C.
 Engineers / Land Surveyors
 Springfield, Illinois
 Design Firm License No. 184-002703

REVISIONS	
NAME	DATE

ILLINOIS DEPARTMENT OF TRANSPORTATION
 CROSS TIES
 US 136 OVER LONE TREE CREEK
 FAP ROUTE 709, SECTION 104BR-1
 CHAMPAIGN COUNTY

SCALE:
 DATE: 04/19/06
 DRAWN BY CFC
 CHECKED BY