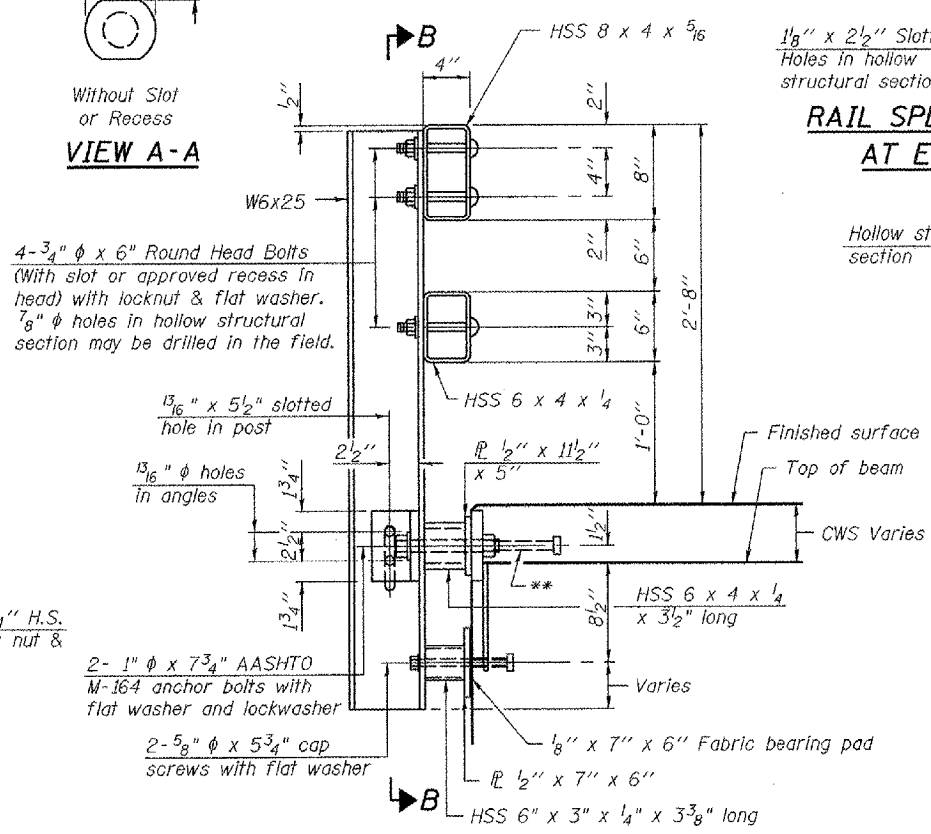
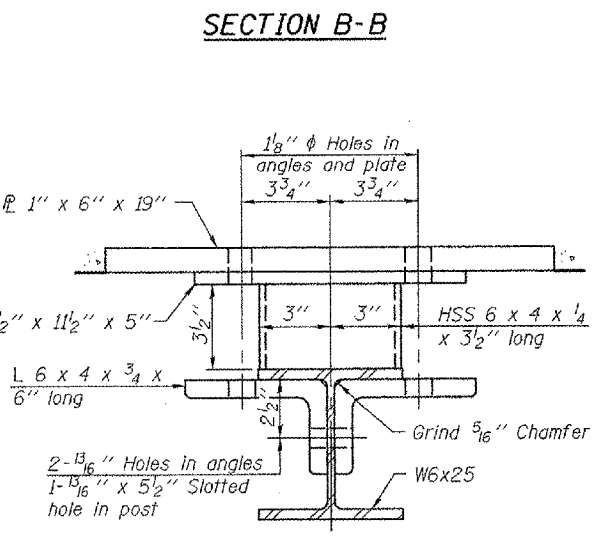


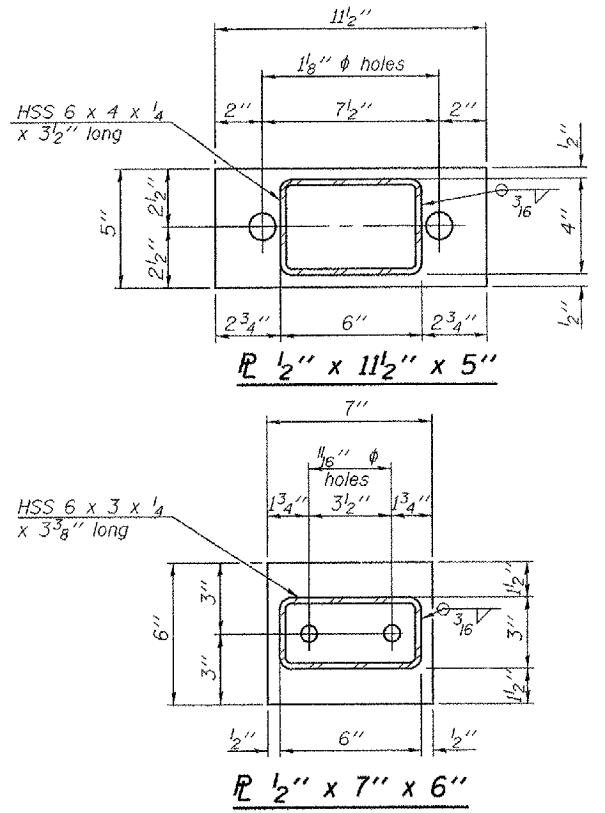
**SECTION B-B**



**SECTION AT RAIL POST**

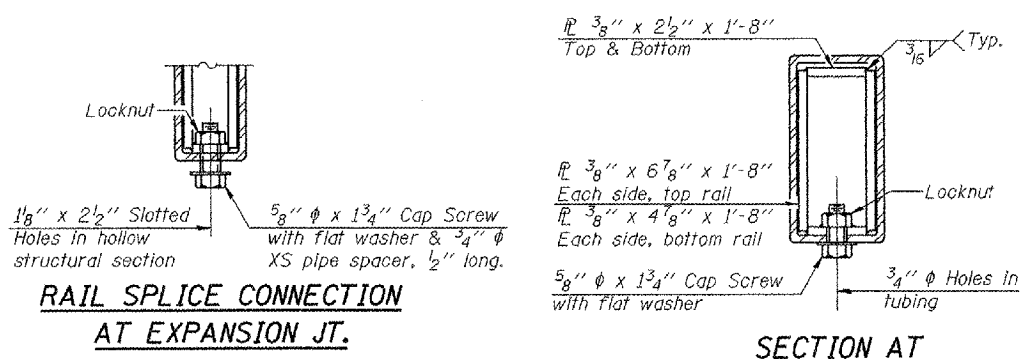


**SECTION C-C**

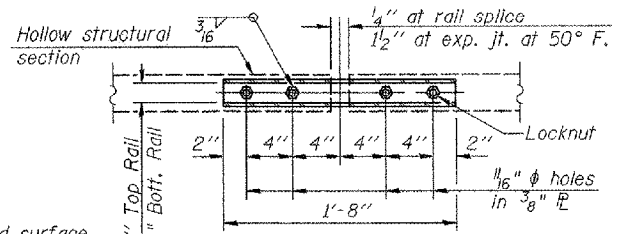


**ANCHOR DEVICE**

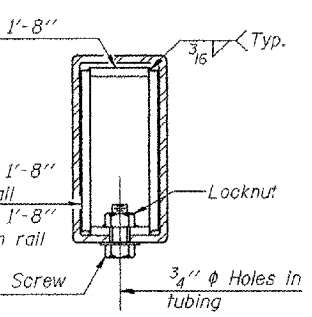
\* Threaded areas shall be plugged or blocked off during casting of beam. Galvanized after fabrication.



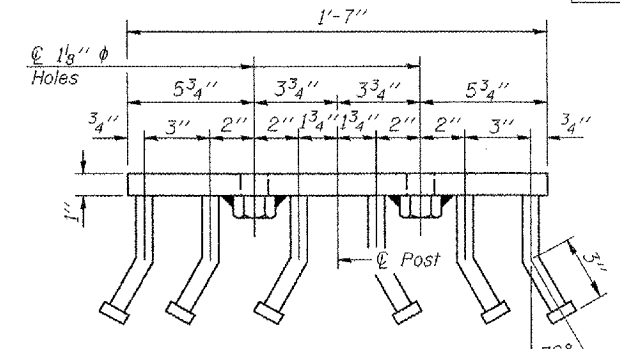
**RAIL SPLICE CONNECTION AT EXPANSION JT.**



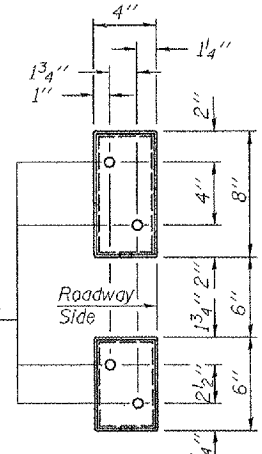
**PLAN-BOTT. SPLICE P TYPICAL**



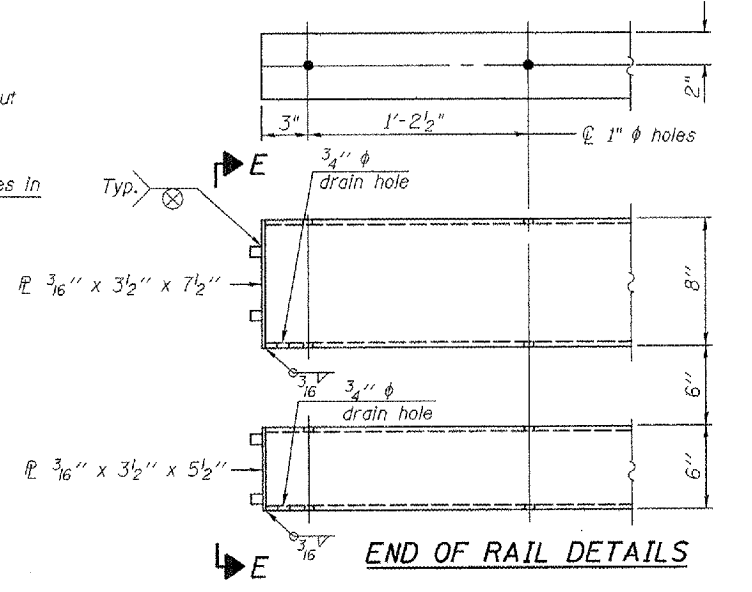
**SECTION AT RAIL SPLICE**



**VIEW D-D**



**VIEW E-E**



**END OF RAIL DETAILS**

**Notes:**  
 All field drilled holes shall be coated with an approved zinc rich paint before erection.  
 For multi-span bridges, sufficient 1/4" x 6" x 1'-2" galvanized steel shims shall be provided to align rail between adjacent spans. Cost included with Steel Railing, Type SM.  
 Steel rail elements shall be galvanized according to Article 509.05 of the Standard Specifications.  
 \*\* The studs of the anchor devices shall be placed below the top reinforcement bars and the outermost longitudinal reinforcement bar shall be placed directly above the studs of the rail post anchor device.

**BILL OF MATERIAL**

Item	Unit	Quantity
Steel Railing, Type SM	Foot	85

ILLINOIS DEPARTMENT OF TRANSPORTATION	
SHEET TITLE	
STEEL RAILING, TYPE SM WITH CONCRETE WEARING SURFACE	
PROJECT	PROJECT NO.
US ROUTE 136 OVER LONE TREE CREEK	03061-8
FAP ROUTE 709 SECTION 104BR-1	SCALE
CHAMPAIGN COUNTY	DATE
STATION 1458+06.74	12/04/06
STRUCTURE NUMBER 010-0058	DRAWN BY
	TFG
	CHECKED BY
	BD/REG/MCB
	DRAWING NO.
COOMBE-BLOXDORF P.C.	6
Engineers / Land Surveyors	
Springfield, Illinois	
Design Firm License No. 184-002703	OF 8 SHTS

PLOT DATE = 12/04/06  
 FILE NAME = R-34CWS.dgn  
 PLOT SCALE = 0.10000 1" = 1'-0"  
 USER NAME = TFC