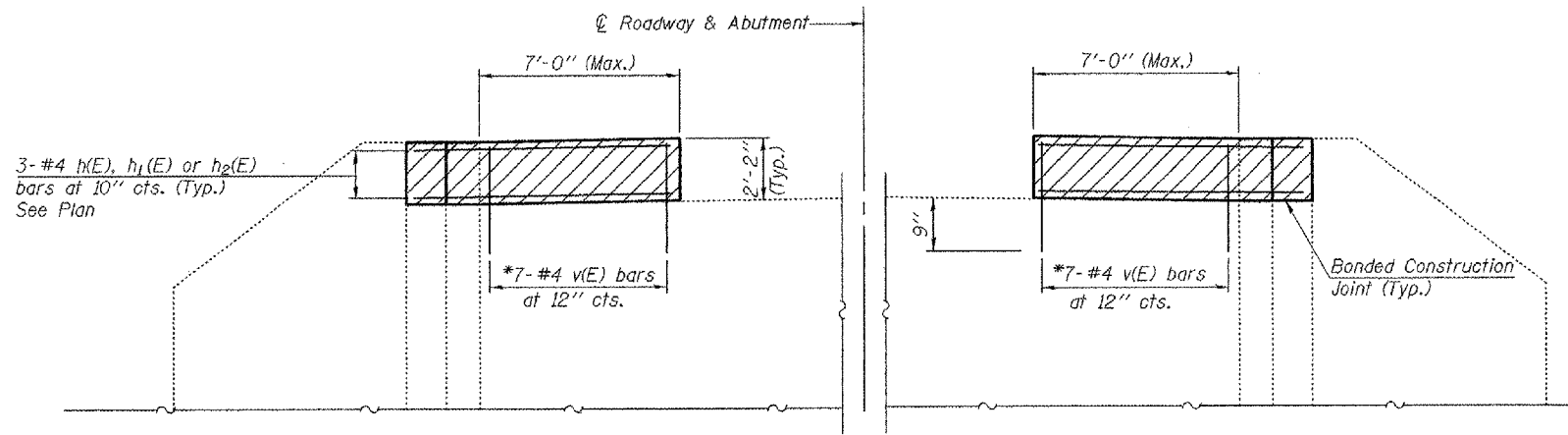
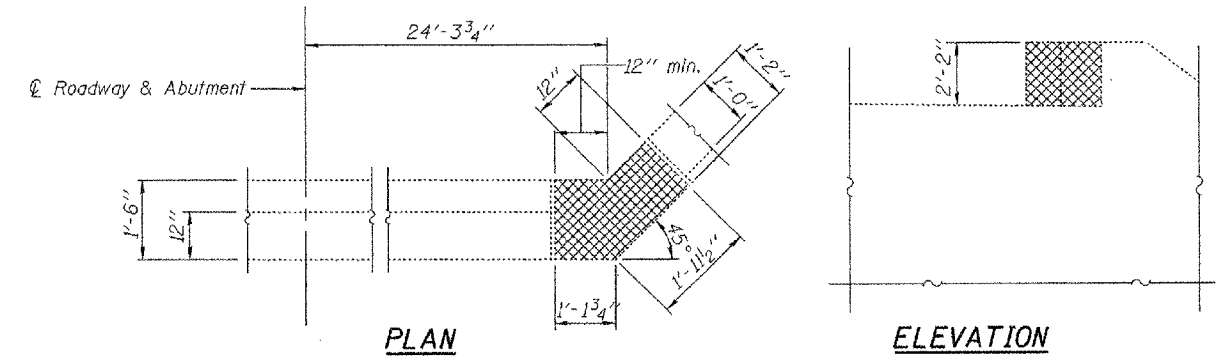


Contract #70262



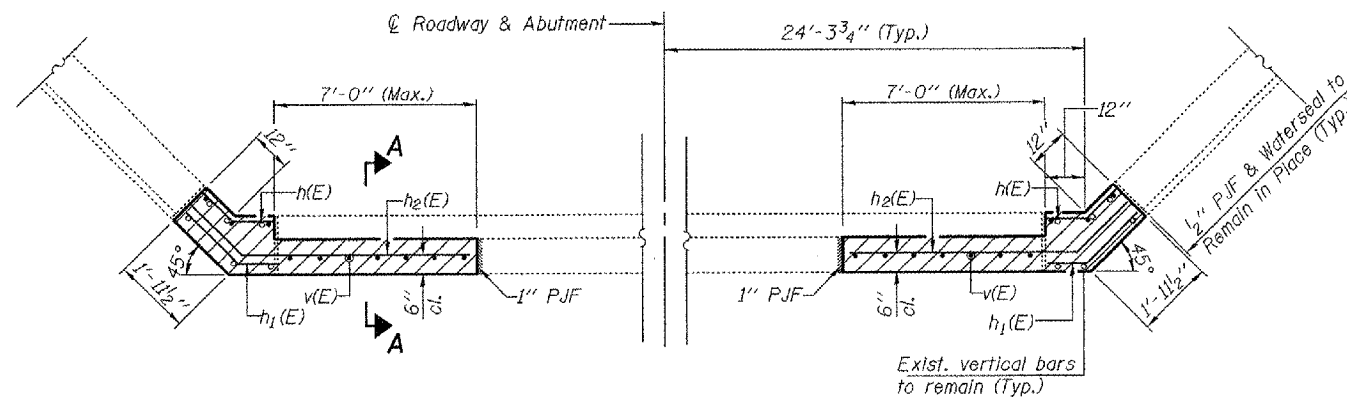
ELEVATION

*Epoxy grout v(E) bars into 3/4" φ x 9" drilled holes. See Section 584 of the Standard Specifications.



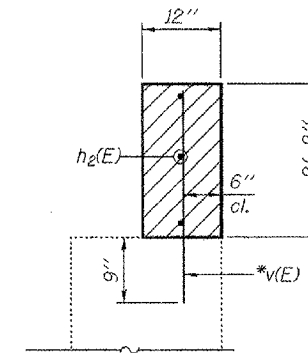
CONCRETE REMOVAL DETAIL

(Each side of each abutment)

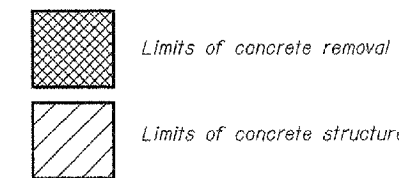


PLAN

(W. Abut. Looking West)
(E. Abut. Looking East)



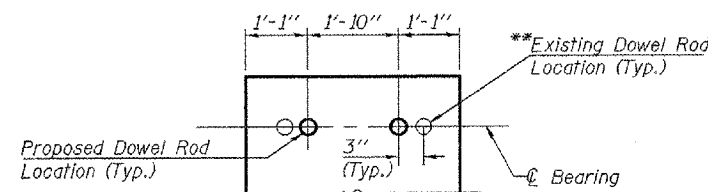
SECTION A-A



BILL OF MATERIAL

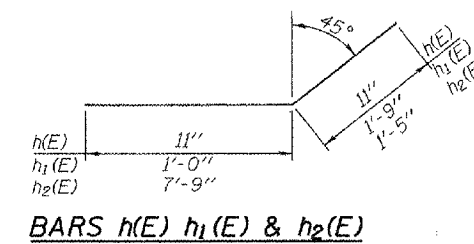
Bar	No.	Size	Length	Shape	
h(E)	12	#4	1'-10"	✓	
h1(E)	12	#4	2'-9"	✓	
h2(E)	12	#4	9'-2"	✓	
v(E)	28	#4	2'-9"	—	
Reinforcement Bars Epoxy Coated				Lb.	160
Concrete Removal				Cu. Yd.	1.1
Concrete Structures				Cu. Yd.	3.4

**Burn existing dowel rods including those at beams not being replaced, flush with existing abutment surface, grind smooth and seal with epoxy. Cost included with removal of Existing Superstructure. (48 Total)



END OF BEAM PLAN

Showing Dowel Rod Locations



BARS h(E) h1(E) & h2(E)

NOTES

Existing vertical reinforcement to be cleaned, straightened and incorporated into new construction. Any reinforcement bars that are damaged during concrete removal operations shall be repaired or replaced using an approved bar splicer or anchorage system. Cost included in Concrete Removal.
Hatched area shall be poured after superstructure is in place.

ILLINOIS DEPARTMENT OF TRANSPORTATION	
SHEET TITLE ABUTMENT DETAILS	
PROJECT US ROUTE 136 OVER LONE TREE CREEK FAP ROUTE 709 SECTION 104BR-1 CHAMPAIGN COUNTY STATION 1458+06.74 STRUCTURE NUMBER 010-0058	PROJECT NO. 03061-8 SCALE DATE 12/04/06 DRAWN BY TFG CHECKED BY RD/REG/MCB DRAWING NO. 7
COOMBE-BLOXDORF P.C. Engineers / Land Surveyors Springfield, Illinois Design Firm License No. 184-002703	
OF 8 SHTS	

PLOT DATE = 12/04/2006
FILE NAME = \\sfr-010-0058-sh1-t-abut-det.dwg
PLOT SCALE = 8x10.000 1" = 7' IN.
USER NAME = TFG