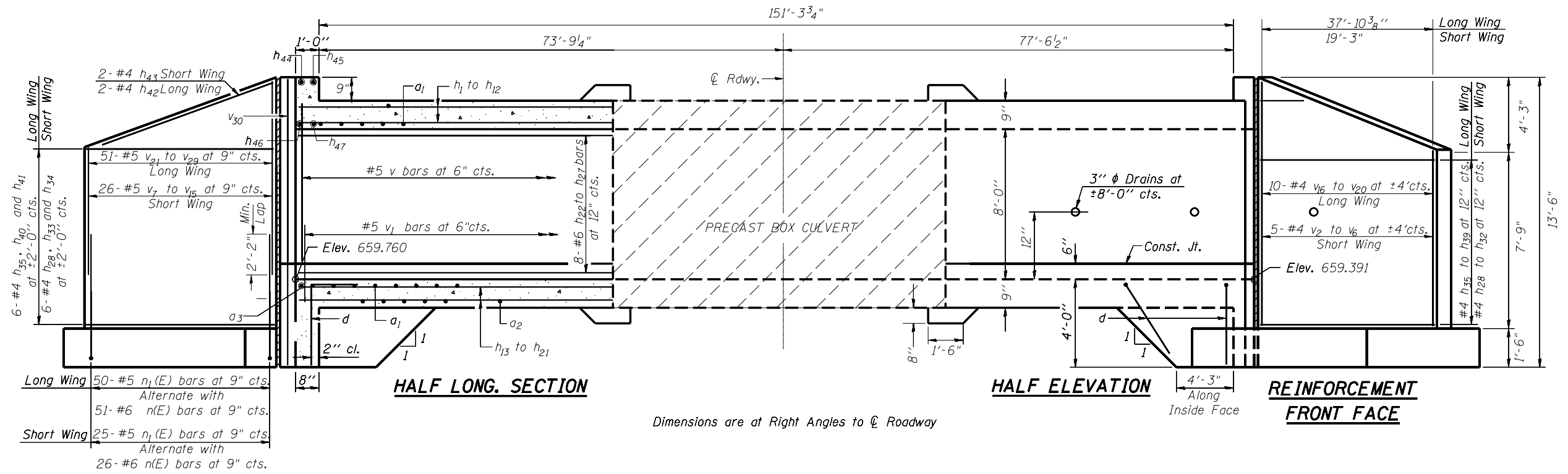


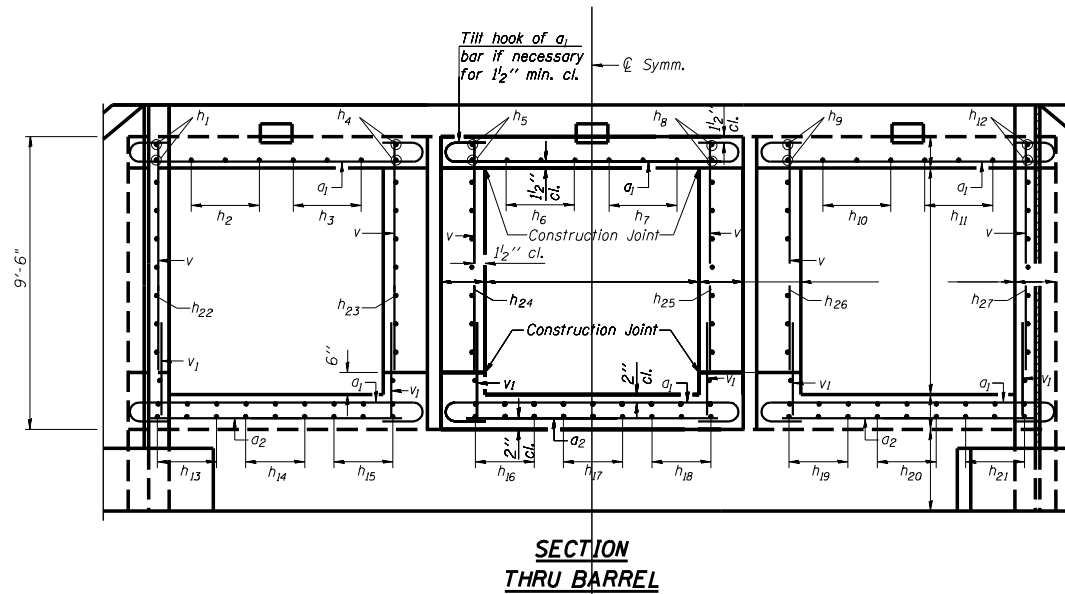
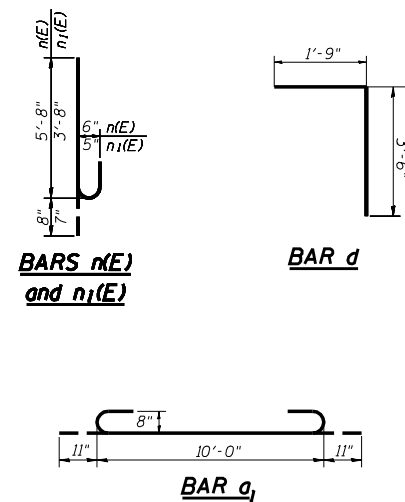
F.A.P. RTE.	SECTION	COUNTY	TOTAL SHEETS	SHEET NO.
711	(115BR)BR	VERMILION	43	18
STA. _____		TO STA. _____		
FED. ROAD DIST. NO. _____		ILLINOIS FED. AID PROJECT		

DETAIL OF BOX CULVERT END SECTION



Dimensions are at Right Angles to ϕ Roadway

REINFORCEMENT BACK FACE



Coarse aggregate full length of both headwalls. To be placed by Grading Contractor. Cost included with Concrete Box Culverts.

