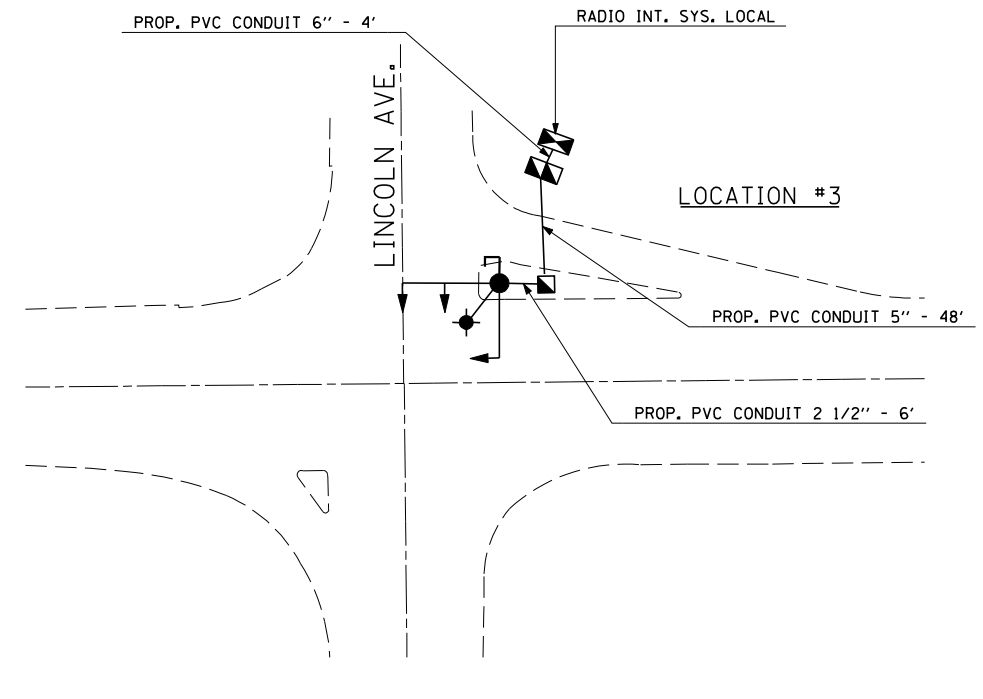
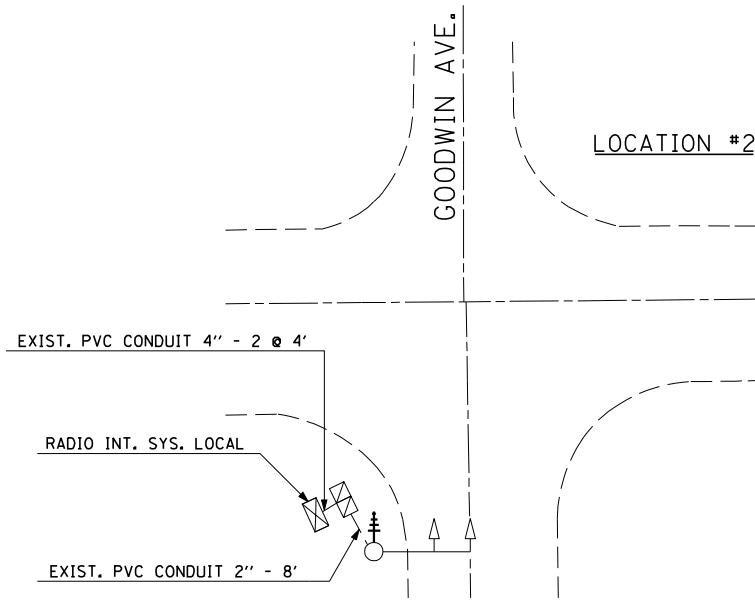
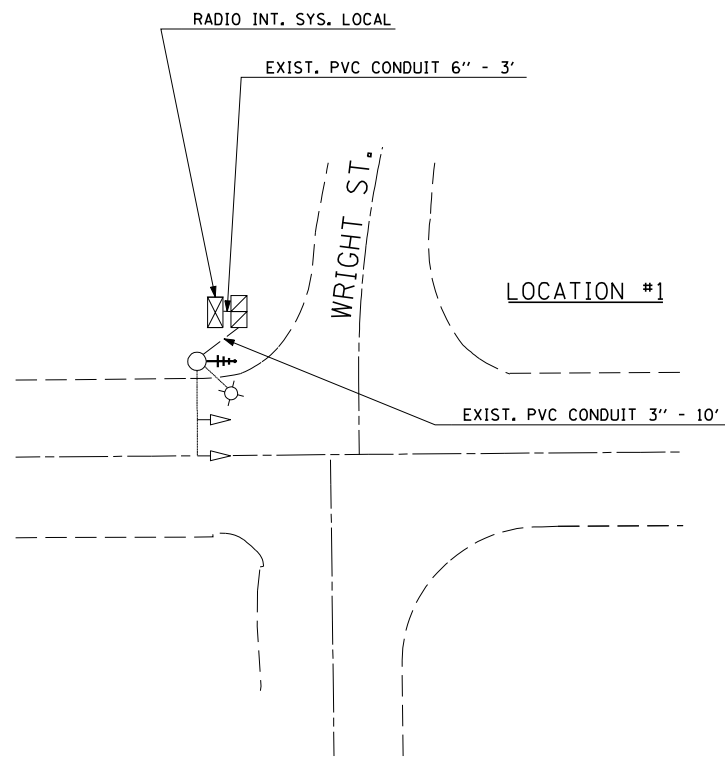
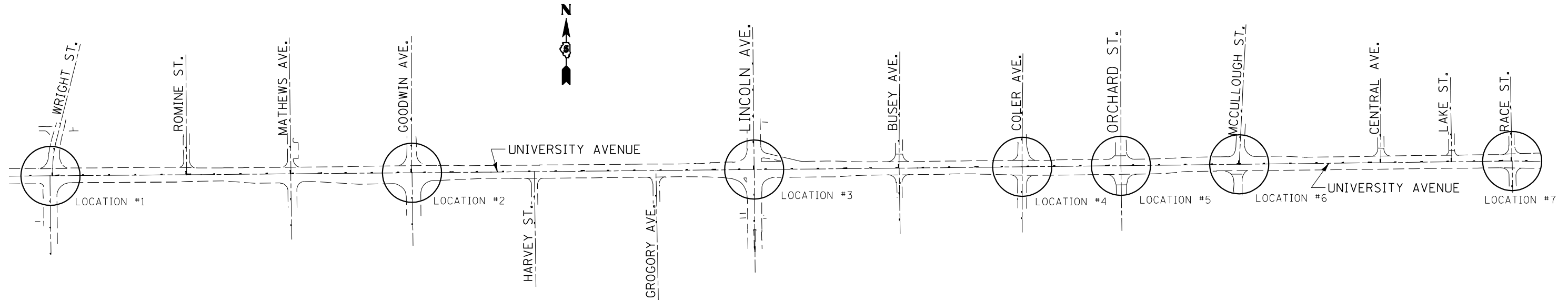


F.A.P. RTE.	SECTION	COUNTY	TOTAL SHEETS	SHEET NO.
808	(28X)TS-3	CHAMPAIGN	14	13

PROPOSED RADIO INTERCONNECT SYSTEM LAYOUT



LEGEND

- EXISTING CONTROLLER AND CABINET
- EXISTING SIGNAL HEAD AND POST
- EXISTING MAST ARM ASSEMBLY, SIGNAL HEAD
- EXISTING HANDHOLE
- EXISTING SERVICE INSTALLATION POLE
- EXISTING CONDUIT
- PROPOSED RADIO INTERCONNECT ANTENNA - YAGI DIRECTIONAL
- PROPOSED RADIO INTERCONNECT ANTENNA - OMNI DIRECTIONAL

NOTE:
RADIO ANTENNA TO BE MOUNTED ON MAST ARM STRAIN POLE (SEE ANTENNA DETAILS).