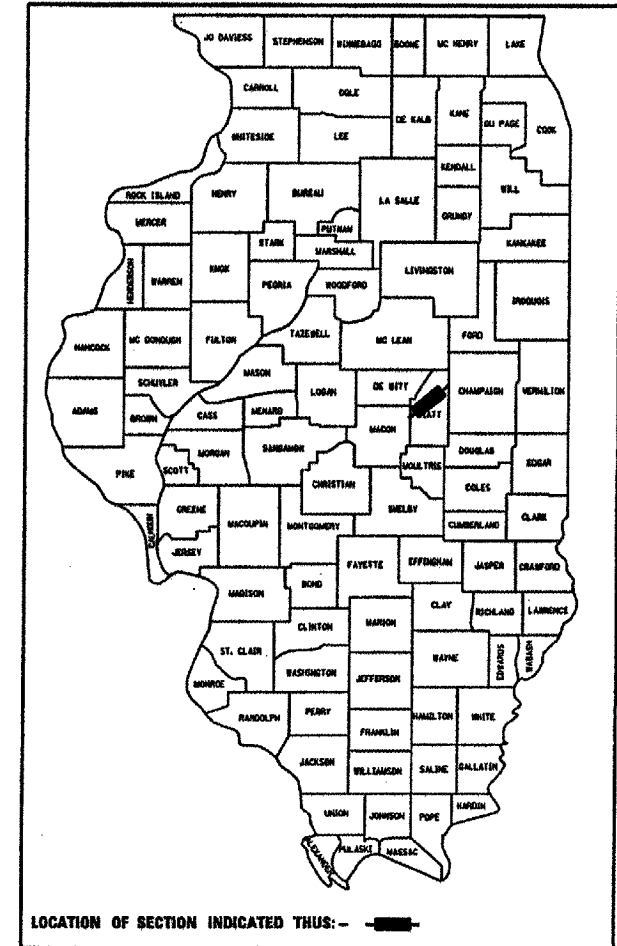


| F.A.I. RTE. | SECTION | COUNTY | TOTAL SHEETS | SHEET NO. |
|-------------|---------|--------|--------------|-----------|
| 72 | | PIATT | 13 | 1 |

• D5 ANNUAL PATCHING 2007-1

D-95-080-06



STATE OF ILLINOIS
 DEPARTMENT OF TRANSPORTATION
 DIVISION OF HIGHWAYS
**PROPOSED
 HIGHWAY PLANS**

**FAI ROUTE 72 (I-72)
 SECTION D5 ANNUAL PATCHING 2007-1
 PATCHING FROM MACON COUNTY LINE TO ILL 10
 PIATT COUNTY
 C-95-080-06**

FOR INDEX OF SHEETS, SEE SHEET NO. 2
 FOR SUMMARY OF QUANTITIES, SEE SHEET NO. 4

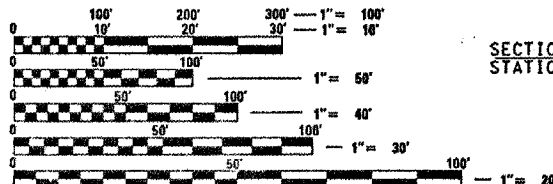
(217) 465-4181

PROJECT ENGINEER: KEVIN TRAPP

SQUAD LEADER: JASON W. STULTS

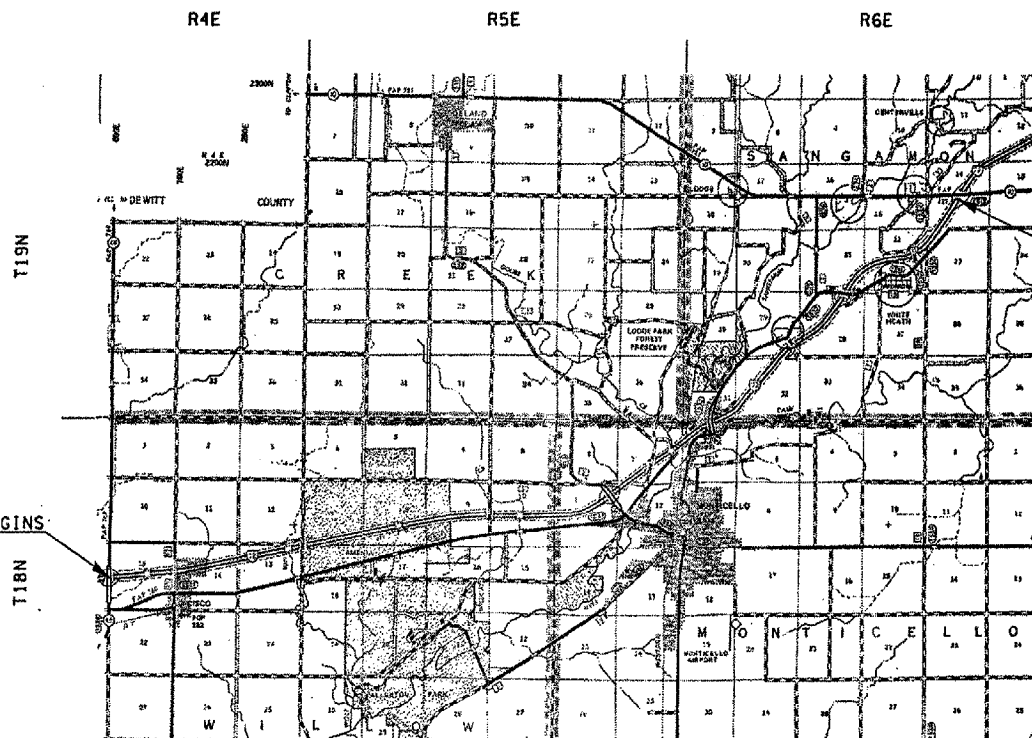
DESIGNER: EVARISTO QUIROZ

| DESIGN DESIGNATION | |
|----------------------------------|-------|
| 10800(2005) IL 48 TO MONTICELLO | - N/A |
| 13800(2005) MONTICELLO TO ILL 10 | - N/A |



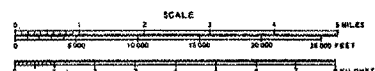
FULL SIZE PLANS HAVE BEEN PREPARED USING STANDARD ENGINEERING SCALES. REDUCED SIZED PLANS WILL NOT CONFORM TO STANDARD SCALES. IN MAKING MEASUREMENTS ON REDUCED PLANS, THE ABOVE SCALES MAY BE USED.

J.U.L.I.E.
 JOINT UTILITY LOCATION INFORMATION FOR EXCAVATION
 1-800-892-0123 BRANCH, MONTICELLO, & SANGAMON TOWNSHIP



SECTION D5 ANNUAL PATCHING 2007-1 BEGINS
 STATION 932+59.22

SECTION D5 ANNUAL PATCHING 2007-1 ENDS
 STATION 1421+61.77



TOTAL AND NET LENGTH OF SECTION & PROJECT = 80229.97 FEET = 15.195 MILES

STATE OF ILLINOIS
 DEPARTMENT OF TRANSPORTATION
 DIVISION OF HIGHWAYS

SUBMITTED 09/29/06 2006

[Signature]
 DEPUTY DIRECTOR OF HIGHWAYS, REGION 3 ENGINEER

December 8, 2006
Eric E. Horn
 INTERIM ENGINEER OF DESIGN AND ENVIRONMENT

December 8, 2006
Milton R. Sewell
 DIRECTOR OF HIGHWAYS, CHIEF ENGINEER

**PRINTED BY THE AUTHORITY
 OF THE STATE OF ILLINOIS**