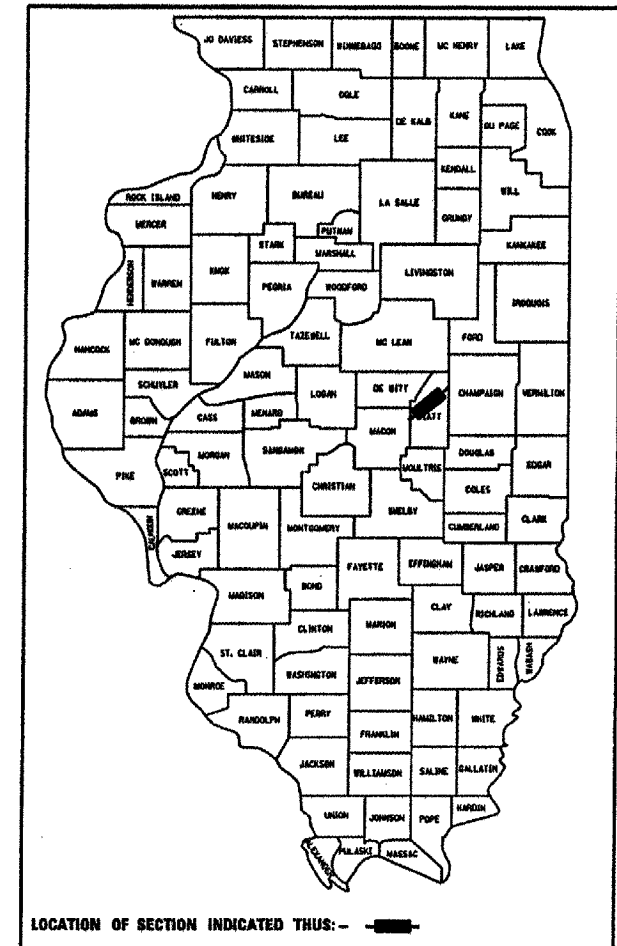


F.A.I. RTE.	SECTION	COUNTY	TOTAL SHEETS	SHEET NO.
72		PIATT	13	1

• D5 ANNUAL PATCHING 2007-1

D-95-080-06



STATE OF ILLINOIS
 DEPARTMENT OF TRANSPORTATION
 DIVISION OF HIGHWAYS
**PROPOSED
 HIGHWAY PLANS**

**FAI ROUTE 72 (I-72)
 SECTION D5 ANNUAL PATCHING 2007-1
 PATCHING FROM MACON COUNTY LINE TO ILL 10
 PIATT COUNTY
 C-95-080-06**

FOR INDEX OF SHEETS, SEE SHEET NO. 2
 FOR SUMMARY OF QUANTITIES, SEE SHEET NO. 4

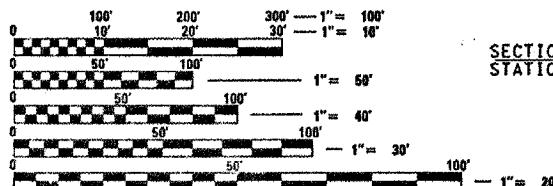
(217) 465-4181

PROJECT ENGINEER: KEVIN TRAPP

SQUAD LEADER: JASON W. STULTS

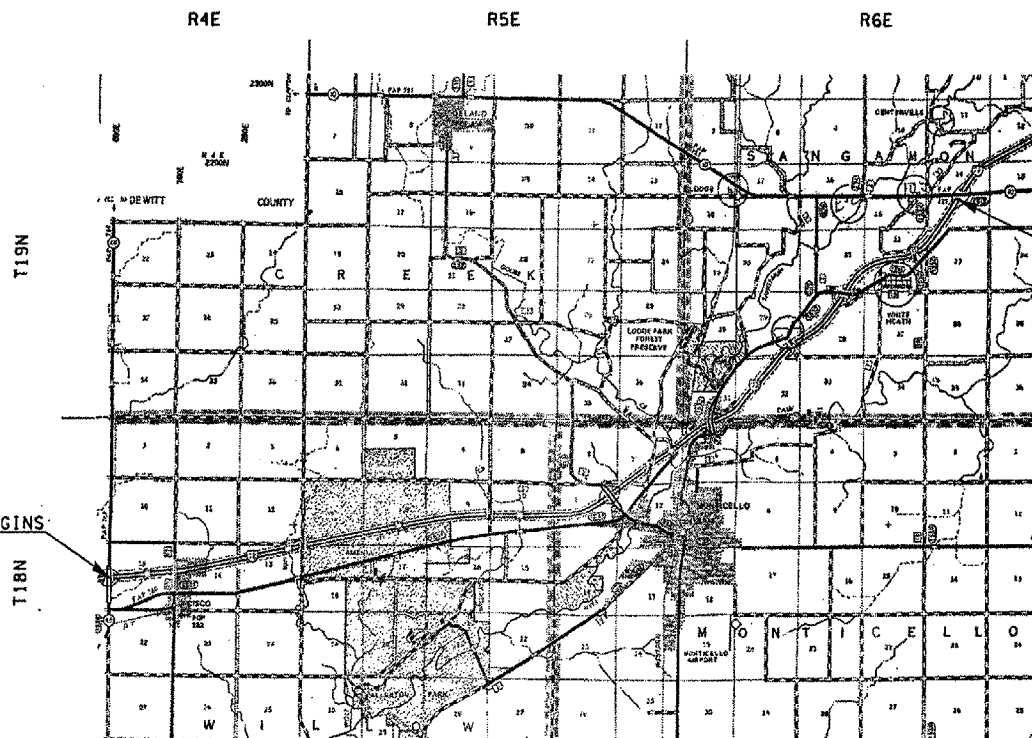
DESIGNER: EVARISTO QUIROZ

DESIGN DESIGNATION
 10800(2005) IL 48 TO MONTICELLO - N/A
 13800(2005) MONTICELLO TO ILL 10 - N/A



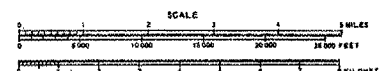
FULL SIZE PLANS HAVE BEEN PREPARED USING STANDARD ENGINEERING SCALES. REDUCED SIZED PLANS WILL NOT CONFORM TO STANDARD SCALES. IN MAKING MEASUREMENTS ON REDUCED PLANS, THE ABOVE SCALES MAY BE USED.

J.U.L.I.E.
 JOINT UTILITY LOCATION INFORMATION FOR EXCAVATION
 1-800-892-0123 BRANCH, MONTICELLO, & SANGAMON TOWNSHIP



SECTION D5 ANNUAL PATCHING 2007-1 ENDS
 STATION 1421+61.77

SECTION D5 ANNUAL PATCHING 2007-1 BEGINS
 STATION 932+59.22



TOTAL AND NET LENGTH OF SECTION & PROJECT = 80229.97 FEET = 15.195 MILES

STATE OF ILLINOIS
 DEPARTMENT OF TRANSPORTATION
 DIVISION OF HIGHWAYS

SUBMITTED 09/24/06 2006

[Signature]
 DEPUTY DIRECTOR OF HIGHWAYS, REGION 3 ENGINEER

December 8, 2006
[Signature]
 INTERIM ENGINEER OF DESIGN AND ENVIRONMENT

December 8, 2006
[Signature]
 DIRECTOR OF HIGHWAYS, CHIEF ENGINEER

**PRINTED BY THE AUTHORITY
 OF THE STATE OF ILLINOIS**

TABLE OF CONTENTS

DESCRIPTION	SHEET NO.
COVER SHEET	1
INDEX OF SHEETS/HIGHWAY STANDARDS	2
GENERAL NOTES	3
SUMMARY OF QUANTITIES	4
EXISTING TYPICAL CROSS SECTIONS	5-7
SCHEDULE OF QUANTITIES	8-12
DETAIL OF PATCHING WITH HOT-MIX ASPHALT OVERLAY REMOVAL	13
SPECIAL DETAIL FOR RAMP WORK AREAS	13

HIGHWAY STANDARDS

STANDARD NO.	DESCRIPTION
001001-01	AREAS OF REINFORCEMENT
001006	DECIMAL OF AN INCH AND A FOOT
420001-06	PAVEMENT JOINTS
421001-01	BAR REINFORCEMENT FOR CRC PAVEMENT
442001-03	CLASS A PATCHES
442101-06	CLASS B PATCHES
701400-02	APPROACH TO LANE CLOSURE, FREEWAY/EXPRESSWAY
701401-03	LANE CLOSURE, FREEWAY/EXPRESSWAY
701411-03	LANE CLOSURE, MULT-LANE, AT ENTRANCE OR EXIT RAMP, FOR SPEEDS \geq 45 MPH
702001-06	TRAFFIC CONTROL DEVICES

CONTRACT NO. 70565

F.A.T. RITE	SECTION	COUNTY	TOTAL SHEETS	SHEET NO.
12		PIATT	13	2
STA.	TO STA.			
FED. ROAD DIST. NO.	ILLINOIS	FED. AID PROJECT		

• D5 ANNUAL PATCHING 2007-1

PLOT DATE * 10/18/2008
 FILE NAME * \\p01\share\70565\70565.tbl.dgn
 PLOT SCALE * 1/8" = 1'-0"
 USER NAME * stults

REVISIONS	
NAME	DATE

ILLINOIS DEPARTMENT OF TRANSPORTATION

INDEX OF SHEETS/HIGHWAY STANDARDS

SCALE: VERT. DATE DRAWN BY CHECKED BY

F.A.I. RTE.	SECTION	COUNTY	TOTAL SHEETS	SHEET NO.
72	:	PIAII	13	3

STA. _____	TO STA. _____
FED. ROAD DIST. NO. _____	ILLINOIS FED. AID PROJECT _____

• D5 ANNUAL PATCHING 2007-1

GENERAL NOTES

G.N.-100
 ENGLISH UNITS OF MEASUREMENT SHALL GOVERN OVER AND SUPERSEDE ANY METRIC UNITS SHOWN IN THIS CONTRACT. WHERE INCLUDED, METRIC UNITS ARE FOR INFORMATION ONLY.

G.N.-406
 THE QUANTITIES INCLUDED IN THE PLANS FOR HOT-MIX ASPHALT RESURFACING ARE INTENDED TO GIVE THE COVERAGE SHOWN ON THE TYPICAL CROSS SECTIONS. IT IS NOT INTENDED TO INCREASE THE THICKNESS OF THE HOT-MIX ASPHALT MIXTURE IN ORDER TO USE ALL OF THE QUANTITIES INCLUDED IN THE CONTRACT.

G.N. -406H

MIXTURE REQUIREMENTS

The following mixture requirements are applicable for this project:

Location(s):	I-72	I-72
Mixture Use(s):	TOP 1 1/2" OF HMA PLACEMENT	REMAINDER OF HMA PLACEMENT
AC/PG:	SBS PG 70-22	SBS PG 70-22
Rap %: (MAX)	10%	10%
Design Air Voids:	4.0% Ndes = 90	4.0% Ndes = 90
Mixture Composition: (Graduation Mixture)	IL 9.5	IL 19.0
Friction Aggregate:	MIX "D"	N/A

G.N.-442B -- PATCHING SCHEDULES
 THE PATCHING SCHEDULES INCLUDED IN THE PLANS REPRESENT THE BEST INFORMATION AVAILABLE AT THE TIME OF COMPLETION OF THE PLANS FOR LETTING. VARIATIONS IN LOCATION AND SIZES OF BOTH FULL-DEPTH AND PARTIAL-DEPTH PATCHES MAY OCCUR.

G.N.-1004.01
 COARSE AGGREGATE GRADATION CA-10 MAY BE USED WHENEVER COARSE AGGREGATE CA-6 IS SPECIFIED IN THE STANDARD SPECIFICATIONS.

PLOT DATE = 10/24/2006
 FILE NAME = c:\projects\0508006 (v.8)\70565 text.dgn
 PLOT SCALE = 42,352% / IN.
 USER NAME = stults,j

REVISIONS		ILLINOIS DEPARTMENT OF TRANSPORTATION
NAME	DATE	
		GENERAL NOTES SCALE: VERT. _____ HORIZ. _____ DATE _____
DRAWN BY _____		CHECKED BY _____

F.A.I. RTE.	SECTION	COUNTY	TOTAL SHEETS	SHEET NO.
72		PIATT	13	4
STA.	TO STA.			
FED. ROAD DIST. NO.	ILLINOIS	FED. AID PROJECT		

• D5 ANNUAL PATCHING 2007-1

SUMMARY OF QUANTITIES

LOCATION OF WORK:

I-72
PIATT
COUNTY
STA. 932+59.23
TO
STA. 1421+61.77
RURAL

CONSTRUCTION TYPE CODE:

100% STATE
J000
TOTAL
QUANTITY

CODE NO	ITEM	UNIT	QUANTITY
40600100	BITUMINOUS MATERIALS (PRIME COAT)	GALLON	72.0
40601005	HOT-MIX ASPHALT REPLACEMENT OVER PATCHES	TON	216.0
44002213	HOT-MIX ASPHALT REMOVAL OVER PATCHES, 3 1/4"	SQ YD	1,065.0
44002220	HOT-MIX ASPHALT REMOVAL OVER PATCHES, 5"	SQ YD	11.0
44002229	HOT-MIX ASPHALT REMOVAL OVER PATCHES, 7 1/4"	SQ YD	47.0
44200517	CLASS A PATCHES, TYPE II, 7 INCH	SQ YD	22.0
44200521	CLASS A PATCHES, TYPE III, 7 INCH	SQ YD	20.0
44200525	CLASS A PATCHES, TYPE I, 8 INCH	SQ YD	80.0
44200529	CLASS A PATCHES, TYPE II, 8 INCH	SQ YD	456.0
44200533	CLASS A PATCHES, TYPE III, 8 INCH	SQ YD	167.0
44200535	CLASS A PATCHES, TYPE IV, 8 INCH	SQ YD	207.0
44200970	CLASS B PATCHES, TYPE II, 10 INCH	SQ YD	32.0
44213000	PATCHING REINFORCEMENT	SQ YD	950.0
44213200	SAW CUTS	FOOT	5,402.0
67100100	MOBILIZATION	L SUM	1.0
70100420	TRAFFIC CONTROL AND PROTECTION, STANDARD 701411	EACH	3.0
70100800	TRAFFIC CONTROL AND PROTECTION, STANDARD 701401	L SUM	1.0
70103815	TRAFFIC CONTROL SURVEILLANCE	CAL DA	9.5
X7015005	CHANGEABLE MESSAGE SIGN	CAL DA	28.0
Z0017100	DOWEL BARS	EACH	80.0
Z0075300	TIE BARS	EACH	226.0

REVISIONS	
NAME	DATE

ILLINOIS DEPARTMENT OF TRANSPORTATION

SUMMARY OF QUANTITIES

SCALE: VERT.
HORIZ.
DATE

DRAWN BY
CHECKED BY

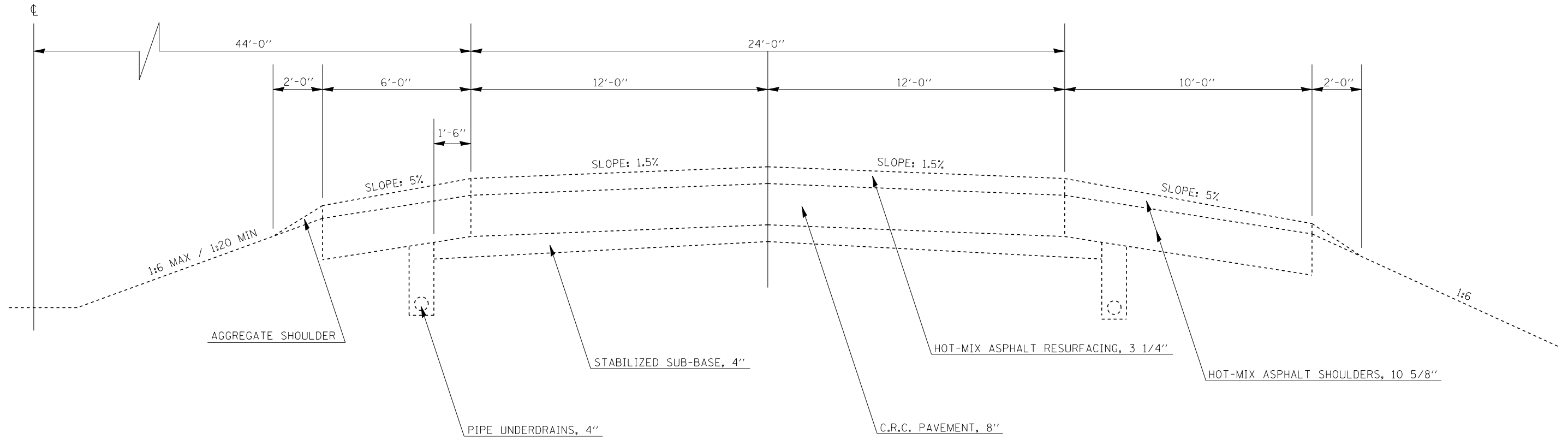
PLOT DATE = 10/10/2006
FILE NAME = s:\projects\70565\summary.dgn
USER NAME = s:\projects\70565\summary.dgn

EXISTING TYPICAL CROSS SECTION

STA. 953+83.00 TO STA. 965+00.00

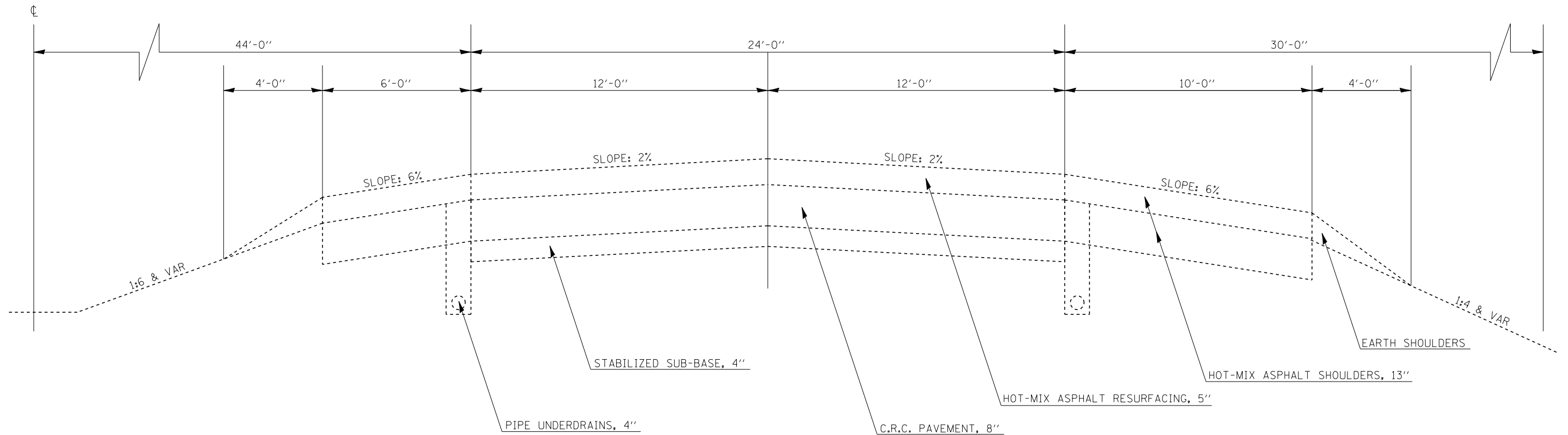
F.A.I. RTE.	SECTION	COUNTY	TOTAL SHEETS	SHEET NO.
72		PI&II	13	5

CONTRACT NO. 70565
• D5 ANNUAL PATCHING 2007-1



EXISTING TYPICAL CROSS SECTION

STA. 965+00.00 TO STA. 1210+00.00

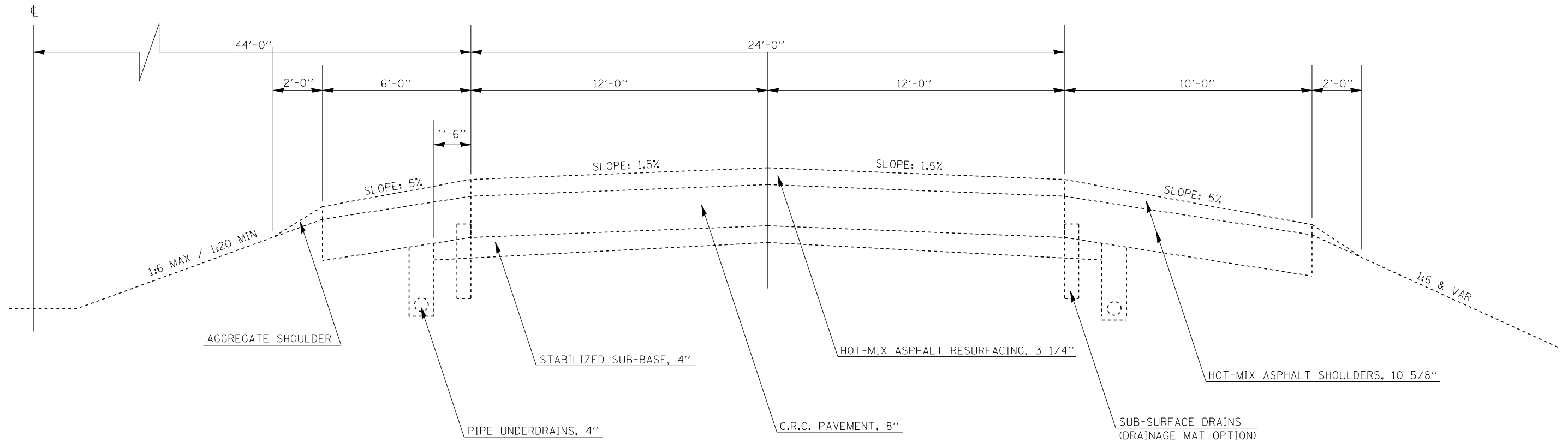


EXISTING TYPICAL CROSS SECTION

STA. 1210+00.00 TO STA. 1464+20.00

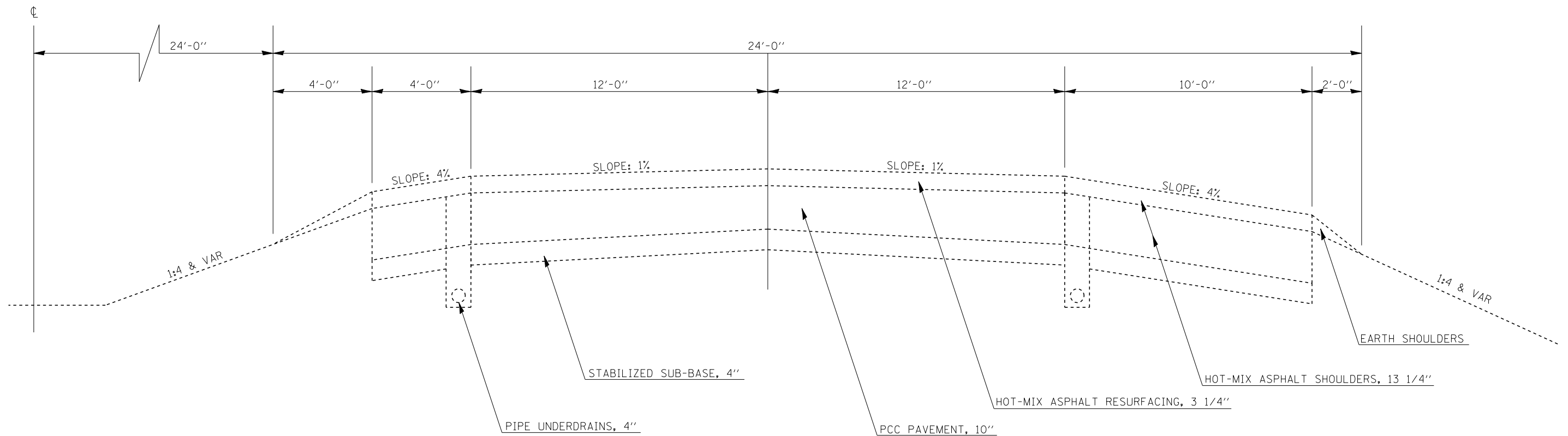
F.A.I. RTE.	SECTION	COUNTY	TOTAL SHEETS	SHEET NO.
72		PI&I	13	6

CONTRACT NO. 70565
• D5 ANNUAL PATCHING 2007-1



EXISTING TYPICAL CROSS SECTION

STA. 1464+20.00 TO STA. 1493+22.04

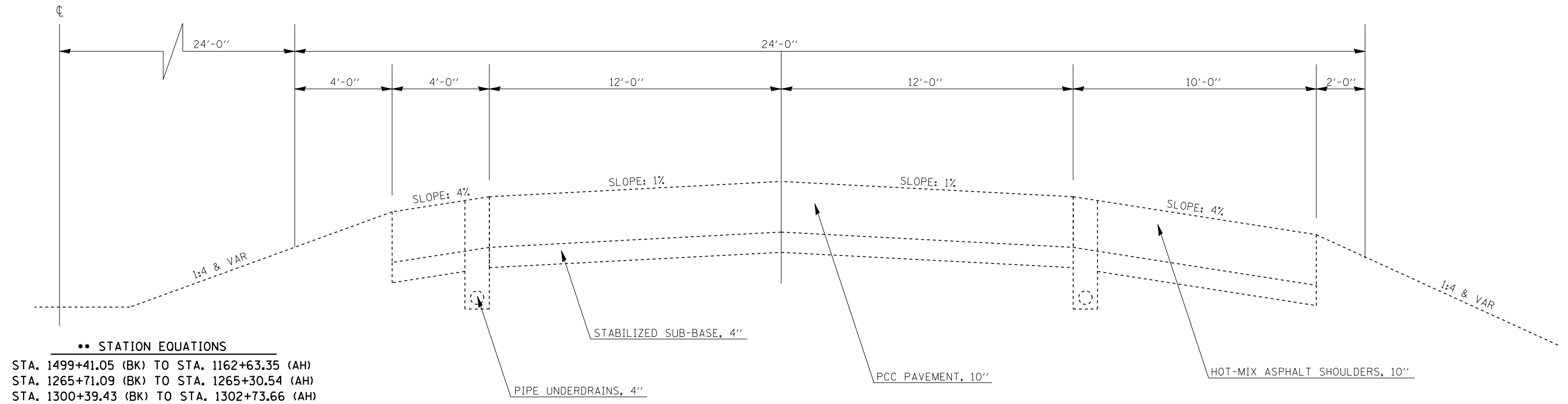


EXISTING TYPICAL CROSS SECTION

STA. 1493+22.04 TO STA. 1376+82.16**

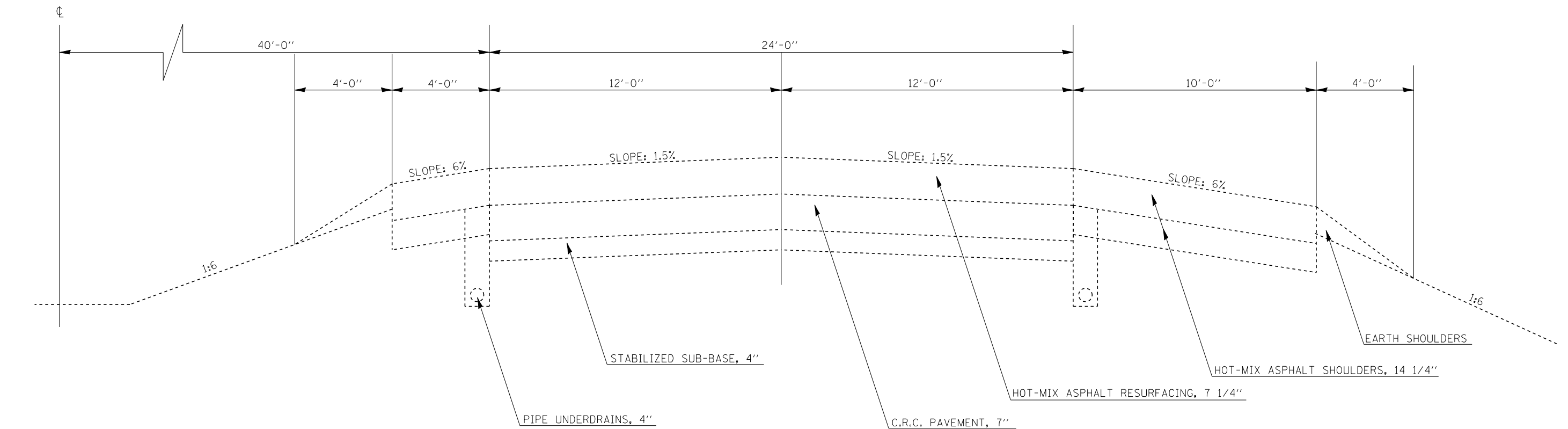
F.A.I. RTE.	SECTION	COUNTY	TOTAL SHEETS	SHEET NO.
72	:	PI&I	13	7

CONTRACT NO. 70565
• D5 ANNUAL PATCHING 2007-1



EXISTING TYPICAL CROSS SECTION

STA. 1376+82.16 TO STA. 1421+29.00



F.A.I. RTE.	SECTION	COUNTY	TOTAL SHEETS	SHEET NO.
72	:	PIAII	13	8
STA. _____		TO STA. _____		
FED. ROAD DIST. NO. _____		ILLINOIS FED. AID PROJECT _____		

SCHEDULE OF QUANTITIES CLASS A PATCHES

• D5 ANNUAL PATCHING 2007-1

STATION	DIRECTION	LANE	LENGTH (ft)	WIDTH (ft)	PATCH AREA				SAW CUTS 44213200 (ft)	TIE BARS Z0075300 (Each)	PATCHING REINFORCEMENT 44213000 (sq. yd)	HMA REM OVER PATCH 3.25 440022XX (sq. yd)	HMA REPLACEMENT OVER PATCHES 40601005 (Tons)
					TYPE I 8" (sq. yd)	TYPE II 8" (sq. yd)	TYPE III 8" (sq. yd)	TYPE IV 8" (sq. yd)					
953+83	EASTBOUND	DL	25	6	0.0	0.0	16.7	0.0	74.0	13	16.7	18.0	3.3
956+48	EASTBOUND	DL	6	6	4.0	0.0	0.0	0.0	36.0	0	4.0	5.3	1.0
956+71	EASTBOUND	DL	6	6	4.0	0.0	0.0	0.0	36.0	0	4.0	5.3	1.0
956+95	EASTBOUND	DL	6	6	4.0	0.0	0.0	0.0	36.0	0	4.0	5.3	1.0
957+70	EASTBOUND	DL	10	6	0.0	6.7	0.0	0.0	44.0	0	6.7	8.0	1.5
958+20	EASTBOUND	DL	10	6	0.0	6.7	0.0	0.0	44.0	0	6.7	8.0	1.5
958+55	EASTBOUND	DL	90	6	0.0	0.0	0.0	60.0	204.0	45	60.0	61.3	11.2
959+60	EASTBOUND	DL	15	6	0.0	10.0	0.0	0.0	54.0	0	10.0	11.3	2.1
960+00	EASTBOUND	DL	15	6	0.0	10.0	0.0	0.0	54.0	0	10.0	11.3	2.1
960+40	EASTBOUND	DL	6	6	4.0	0.0	0.0	0.0	36.0	0	4.0	5.3	1.0
961+31	EASTBOUND	DL	8	6	0.0	5.3	0.0	0.0	40.0	0	5.3	6.7	1.2
963+10	EASTBOUND	DL	20	6	0.0	13.3	0.0	0.0	64.0	10	13.3	14.7	2.7
964+05	EASTBOUND	DL	10	6	0.0	6.7	0.0	0.0	44.0	0	6.7	8.0	1.5
SHEET TOTALS					16.0 (sq. yd)	58.7 (sq. yd)	16.7 (sq. yd)	60.0 (sq. yd)	766.0 (ft)	68.0 (Each)	151.3 (sq. yd)	168.7 (sq. yd)	30.7 (Tons)

CLASS A PATCHES

STATION	DIRECTION	LANE	LENGTH (ft)	WIDTH (ft)	PATCH AREA				SAW CUTS 44213200 (ft)	TIE BARS Z0075300 (Each)	PATCHING REINFORCEMENT 44213000 (sq. yd)	HMA REM OVER PATCH 5 440022XX (sq. yd)	HMA REPLACEMENT OVER PATCHES 40601005 (Tons)
					TYPE I 8" (sq. yd)	TYPE II 8" (sq. yd)	TYPE III 8" (sq. yd)	TYPE IV 8" (sq. yd)					
1035+93.94	EASTBOUND	DL	6	12	0.0	8.0	0.0	0.0	60.0	0	8.0	10.7	3.0
SHEET TOTALS					0.0 (sq. yd)	8.0 (sq. yd)	0.0 (sq. yd)	0.0 (sq. yd)	60.0 (ft)	0.0 (Each)	8.0 (sq. yd)	10.7 (sq. yd)	3.0 (Tons)

PLOT DATE = 10/24/2006
 FILE NAME = c:\projects\0508006 (v.8)\70565 text.dgn
 PLOT SCALE = 42.3525' / IN.
 USER NAME = stults,j

REVISIONS	
NAME	DATE

ILLINOIS DEPARTMENT OF TRANSPORTATION

SCHEDULE OF QUANTITIES

SCALE: VERT.
HORIZ.
DATE

DRAWN BY
CHECKED BY

F.A.I. RTE.	SECTION	COUNTY	TOTAL SHEETS	SHEET NO.
72	:	PIAII	13	9
STA. _____		TO STA. _____		
FED. ROAD DIST. NO. _____		ILLINOIS FED. AID PROJECT		

SCHEDULE OF QUANTITIES

CLASS A PATCHES

• D5 ANNUAL PATCHING 2007-1

STATION	DIRECTION	LANE	LENGTH (ft)	WIDTH (ft)	PATCH AREA				SAW CUTS 44213200 (ft)	TIE BARS Z0075300 (Each)	PATCHING REINFORCEMENT 44213000 (sq. yd)	HMA REM OVER PATCH 3.25 44002213 (sq. yd)	HMA REPLACEMENT OVER PATCHES 40601005 (Tons)
					TYPE I 8" (sq. yd)	TYPE II 8" (sq. yd)	TYPE III 8" (sq. yd)	TYPE IV 8" (sq. yd)					
1211+00	EASTBOUND	DL	6	6	4.0	0.0	0.0	0.0	36.0	0	4.0	5.3	1.0
1213+64	EASTBOUND	DL	6	6	4.0	0.0	0.0	0.0	36.0	0	4.0	5.3	1.0
1216+72	EASTBOUND	DL	6	6	4.0	0.0	0.0	0.0	36.0	0	4.0	5.3	1.0
1221+50	EASTBOUND	DL	8	12	0.0	10.7	0.0	0.0	64.0	0	10.7	13.3	2.4
1221+67	EASTBOUND	DL	6	6	4.0	0.0	0.0	0.0	36.0	0	4.0	5.3	1.0
1231+64	EASTBOUND	DL	10	6	0.0	6.7	0.0	0.0	44.0	0	6.7	8.0	1.5
1238+90	EASTBOUND	DL	6	6	4.0	0.0	0.0	0.0	36.0	0	4.0	5.3	1.0
1248+94	EASTBOUND	DL	6	6	4.0	0.0	0.0	0.0	36.0	0	4.0	5.3	1.0
1250+00	EASTBOUND	DL	25	6	0.0	0.0	16.7	0.0	74.0	13	16.7	18.0	3.3
1250+40	EASTBOUND	DL	6	6	4.0	0.0	0.0	0.0	36.0	0	4.0	5.3	1.0
1250+80	EASTBOUND	DL	6	12	0.0	8.0	0.0	0.0	60.0	0	8.0	10.7	1.9
1257+10	EASTBOUND	DL	10	12	0.0	13.3	0.0	0.0	68.0	0	13.3	16.0	2.9
1258+80	EASTBOUND	DL	6	6	4.0	0.0	0.0	0.0	36.0	0	4.0	5.3	1.0
1259+40	EASTBOUND	DL	6	12	0.0	8.0	0.0	0.0	60.0	0	8.0	10.7	1.9
1259+61	EASTBOUND	DL	6	12	0.0	8.0	0.0	0.0	60.0	0	8.0	10.7	1.9
1259+95	EASTBOUND	DL	6	12	0.0	8.0	0.0	0.0	60.0	0	8.0	10.7	1.9
1266+65	EASTBOUND	DL	6	12	0.0	8.0	0.0	0.0	60.0	0	8.0	10.7	1.9
1266+81	EASTBOUND	DL	16	12	0.0	0.0	21.3	0.0	80.0	0	21.3	24.0	4.4
1271+20	EASTBOUND	DL	15	12	0.0	0.0	20.0	0.0	78.0	0	20.0	22.7	4.1
1271+80	EASTBOUND	DL	6	12	0.0	8.0	0.0	0.0	60.0	0	8.0	10.7	1.9
1272+05	EASTBOUND	DL	6	12	0.0	8.0	0.0	0.0	60.0	0	8.0	10.7	1.9
1275+76	EASTBOUND	DL	6	12	0.0	8.0	0.0	0.0	60.0	0	8.0	10.7	1.9
1277+55	EASTBOUND	DL	40	12	0.0	0.0	0.0	53.3	128.0	20	53.3	56.0	10.2
1282+00	EASTBOUND	DL	8	12	0.0	10.7	0.0	0.0	64.0	0	10.7	13.3	2.4
1284+00	EASTBOUND	DL	6	12	0.0	8.0	0.0	0.0	60.0	0	8.0	10.7	1.9
1286+30	EASTBOUND	DL	15	6	0.0	10.0	0.0	0.0	54.0	0	10.0	11.3	2.1
1287+45	EASTBOUND	DL	6	12	0.0	8.0	0.0	0.0	60.0	0	8.0	10.7	1.9
1287+60	EASTBOUND	DL	6	6	4.0	0.0	0.0	0.0	36.0	0	4.0	5.3	1.0
1288+00	EASTBOUND	DL	6	6	4.0	0.0	0.0	0.0	36.0	0	4.0	5.3	1.0
1289+10	EASTBOUND	DL	6	12	0.0	8.0	0.0	0.0	60.0	0	8.0	10.7	1.9
1292+85	EASTBOUND	DL	6	12	0.0	8.0	0.0	0.0	60.0	0	8.0	10.7	1.9
1293+05	EASTBOUND	DL	6	12	0.0	8.0	0.0	0.0	60.0	0	8.0	10.7	1.9
1296+50	EASTBOUND	DL	12	12	0.0	0.0	16.0	0.0	72.0	0	16.0	18.7	3.4
1296+85	EASTBOUND	DL	20	6	0.0	13.3	0.0	0.0	64.0	10	13.3	14.7	2.7
1297+10	EASTBOUND	DL	10	6	0.0	6.7	0.0	0.0	44.0	0	6.7	8.0	1.5
SHEET TOTALS					40.0 (sq. yd)	175.3 (sq. yd)	74.0 (sq. yd)	53.3 (sq. yd)	1974.0 (ft)	43.0 (Each)	342.7 (sq. yd)	416.0 (sq. yd)	75.7 (Tons)

PLOT DATE = 10/24/2006
 FILE NAME = c:\projects\70565\text.dgn
 PLOT SCALE = 42.3525' / IN.
 USER NAME = stults,j

REVISIONS	
NAME	DATE

ILLINOIS DEPARTMENT OF TRANSPORTATION

SCHEDULE OF QUANTITIES

SCALE: VERT.
HORIZ.
DATE

DRAWN BY
CHECKED BY

F.A.I. RTE.	SECTION	COUNTY	TOTAL SHEETS	SHEET NO.
72	:	PIAII	13	10
STA. _____		TO STA. _____		
FED. ROAD DIST. NO. _____		ILLINOIS FED. AID PROJECT		

SCHEDULE OF QUANTITIES

CLASS A PATCHES

• D5 ANNUAL PATCHING 2007-1

STATION	DIRECTION	LANE	LENGTH (ft)	WIDTH (ft)	PATCH AREA				SAW CUTS 44213200 (ft)	TIE BARS Z0075300 (Each)	PATCHING REINFORCEMENT 44213000 (sq. yd)	HMA REM OVER PATCH 3.25 440022XX (sq. yd)	HMA REPLACEMENT OVER PATCHES 40601005 (Tons)
					TYPE I 8" (sq. yd)	TYPE II 8" (sq. yd)	TYPE III 8" (sq. yd)	TYPE IV 8" (sq. yd)					
1297+85	EASTBOUND	DL	10	6	0.0	6.7	0.0	0.0	44.0	0	6.7	8.0	1.5
1300+00	EASTBOUND	DL	6	6	4.0	0.0	0.0	0.0	36.0	0	4.0	5.3	1.0
1300+05	EASTBOUND	DL	15	6	0.0	10.0	0.0	0.0	54.0	0	10.0	11.3	2.1
1300+20	EASTBOUND	DL	6	12	0.0	8.0	0.0	0.0	60.0	0	8.0	10.7	1.9
1300+40	EASTBOUND	DL	10	12	0.0	13.3	0.0	0.0	68.0	0	13.3	16.0	2.9
1300+55	EASTBOUND	DL	6	12	0.0	8.0	0.0	0.0	60.0	0	8.0	10.7	1.9
1300+70	EASTBOUND	DL	10	6	0.0	6.7	0.0	0.0	44.0	0	6.7	8.0	1.5
1300+75	EASTBOUND	DL	8	12	0.0	10.7	0.0	0.0	64.0	0	10.7	13.3	2.4
1300+96	EASTBOUND	DL	6	12	0.0	8.0	0.0	0.0	60.0	0	8.0	10.7	1.9
1301+45	EASTBOUND	DL	6	6	4.0	0.0	0.0	0.0	36.0	0	4.0	5.3	1.0
1301+80	EASTBOUND	DL	6	12	0.0	8.0	0.0	0.0	60.0	0	8.0	10.7	1.9
1303+00	EASTBOUND	DL	10	12	0.0	13.3	0.0	0.0	68.0	0	13.3	16.0	2.9
1306+95	EASTBOUND	DL	6	6	4.0	0.0	0.0	0.0	36.0	0	4.0	5.3	1.0
1309+90	EASTBOUND	DL	10	12	0.0	13.3	0.0	0.0	68.0	0	13.3	16.0	2.9
1321+56	EASTBOUND	DL	6	12	0.0	8.0	0.0	0.0	60.0	0	8.0	10.7	1.9
1321+87	EASTBOUND	DL	6	12	0.0	8.0	0.0	0.0	60.0	0	8.0	10.7	1.9
1322+15	EASTBOUND	DL	6	6	4.0	0.0	0.0	0.0	36.0	0	4.0	5.3	1.0
1348+50	EASTBOUND	DL	6	12	0.0	8.0	0.0	0.0	60.0	0	8.0	10.7	1.9
1349+55	EASTBOUND	DL	12	12	0.0	0.0	16.0	0.0	72.0	0	16.0	18.7	3.4
1349+95	EASTBOUND	DL	10	12	0.0	13.3	0.0	0.0	68.0	0	13.3	16.0	2.9
1374+47	EASTBOUND	DL	30	6	0.0	0.0	20.0	0.0	84.0	15	20.0	21.3	3.9
1375+40	EASTBOUND	DL	30	6	0.0	0.0	20.0	0.0	84.0	15	20.0	21.3	3.9
1379+30	EASTBOUND	DL	100	6	0.0	0.0	0.0	66.7	224.0	50	66.7	68.0	12.4
1379+30	EASTBOUND	DL	6	12	0.0	8.0	0.0	0.0	60.0	0	8.0	10.7	1.9
1379+30	EASTBOUND	DL	20	12	0.0	0.0	0.0	26.7	88.0	10	26.7	29.3	5.3
1384+80	EASTBOUND	DL	6	12	0.0	8.0	0.0	0.0	60.0	0	8.0	10.7	1.9
1385+00	EASTBOUND	DL	6	12	0.0	8.0	0.0	0.0	60.0	0	8.0	10.7	1.9
1386+10	EASTBOUND	DL	15	6	0.0	10.0	0.0	0.0	54.0	0	10.0	11.3	2.1
1387+40	EASTBOUND	DL	6	6	4.0	0.0	0.0	0.0	36.0	0	4.0	5.3	1.0
1391+58	EASTBOUND	DL	10	6	0.0	6.7	0.0	0.0	44.0	0	6.7	8.0	1.5
1395+40	EASTBOUND	DL	15	12	0.0	0.0	20.0	0.0	78.0	0	20.0	22.7	4.1
1400+10	EASTBOUND	DL	6	6	4.0	0.0	0.0	0.0	36.0	0	4.0	5.3	1.0
1458+80	EASTBOUND	DL	6	12	0.0	8.0	0.0	0.0	60.0	0	8.0	10.7	1.9
1480+00	EASTBOUND	RAMP	16	6	0.0	10.7	0.0	0.0	56.0	0	10.7	12.0	2.2
1386+22	WESTBOUND	DL	8	12	0.0	10.7	0.0	0.0	64.0	0	10.7	13.3	2.4
SHEET TOTALS					24.0 (sq. yd)	213.3 (sq. yd)	76.0 (sq. yd)	93.3 (sq. yd)	2202.0 (ft)	90.0 (Each)	406.7 (sq. yd)	480.0 (sq. yd)	87.4 (Tons)

REVISIONS	
NAME	DATE

ILLINOIS DEPARTMENT OF TRANSPORTATION

SCHEDULE OF QUANTITIES

SCALE: VERT.
HORIZ.
DATE

DRAWN BY
CHECKED BY

F.A.I. RTE.	SECTION	COUNTY	TOTAL SHEETS	SHEET NO.
72	•	PIAII	13	11
STA. _____		TO STA. _____		
FED. ROAD DIST. NO. _____		ILLINOIS FED. AID PROJECT _____		

SCHEDULE OF QUANTITIES CLASS A PATCHES

• D5 ANNUAL PATCHING 2007-1

STATION	DIRECTION	LANE	LENGTH (ft)	WIDTH (ft)	PATCH AREA				SAW CUTS 44213200 (ft)	TIE BARS Z0075300 (Each)	PATCHING REINFORCEMENT 44213000 (sq. yd)	HMA REM OVER PATCH 7.25 440022XX (sq. yd)	HMA REPLACEMENT OVER PATCHES 40601005 (Tons)
					TYPE I 7" (sq. yd)	TYPE II 7" (sq. yd)	TYPE III 7" (sq. yd)	TYPE IV 7" (sq. yd)					
1419+77	EASTBOUND	DL	30	6	0.0	0.0	20.0	0.0	84.0	15	20.0	21.3	8.7
1420+29	EASTBOUND	DL	20	6	0.0	13.3	0.0	0.0	64.0	10	13.3	14.7	6.0
1421+29	EASTBOUND	DL	6	12	0.0	8.0	0.0	0.0	60.0	0	8.0	10.7	4.3
SHEET TOTALS					0.0 (sq. yd)	21.3 (sq. yd)	20.0 (sq. yd)	0.0 (sq. yd)	208.0 (ft)	25.0 (Each)	41.3 (sq. yd)	46.7 (sq. yd)	18.9 (Tons)

CLASS A PATCHING TOTALS

PATCH AREA				SAW CUTS 44213200 (ft)	TIE BARS Z0075300 (Each)	PATCHING REINFORCEMENT 44213000 (sq. yd)	HMA REM OVER PATCH 7.25 44002229 (sq. yd)	HMA REPLACEMENT OVER PATCHES 40601005 (Tons)
TYPE I 7" (sq. yd)	TYPE II 7" (sq. yd)	TYPE III 7" (sq. yd)	TYPE IV 7" (sq. yd)					
0.0 (sq. yd)	22.0 (sq. yd)	20.0 (sq. yd)	0.0 (sq. yd)	208.0 (ft)	25.0 (Each)	41.3 (sq. yd)	46.7 (sq. yd)	18.9 (Tons)

PATCH AREA				SAW CUTS 44213200 (ft)	TIE BARS Z0075300 (Each)	PATCHING REINFORCEMENT 44213000 (sq. yd)	HMA REM OVER PATCH 3.25, 5 44002213, 44002220 (sq. yd)	HMA REPLACEMENT OVER PATCHES 40601005 (Tons)
TYPE I 8" (sq. yd)	TYPE II 8" (sq. yd)	TYPE III 8" (sq. yd)	TYPE IV 8" (sq. yd)					
80.0 (sq. yd)	456.0 (sq. yd)	167.0 (sq. yd)	207.0 (sq. yd)	5002.0 (ft)	201.0 (Each)	908.7 (sq. yd)	1075.4 (sq. yd)	196.8 (Tons)

SAW CUTS 44213200 (ft)	TIE BARS Z0075300 (Each)	PATCHING REINFORCEMENT 44213000 (sq. yd)	HMA REM OVER PATCH (sq. yd)	HMA REPLACEMENT OVER PATCHES 40601005 (Tons)
5210.0 (ft)	226.0 (Each)	950.0 (sq. yd)	*	216.0 (Tons)

- * 44002213 (3.25") - 1065.0 sq. yd
- 44002220 (5") - 11.0 sq. yd
- 44002229 (7.25") - 47.0 sq. yd

REVISIONS	
NAME	DATE

ILLINOIS DEPARTMENT OF TRANSPORTATION

SCHEDULE OF QUANTITIES

SCALE: VERT.
HORIZ.
DATE

DRAWN BY
CHECKED BY

F.A.I. RTE.	SECTION	COUNTY	TOTAL SHEETS	SHEET NO.
72	:	PI&I	13	12

STA. _____	TO STA. _____
FED. ROAD DIST. NO. _____	ILLINOIS FED. AID PROJECT _____

SCHEDULE OF QUANTITIES CLASS B PATCHES

• D5 ANNUAL PATCHING 2007-1

STATION	DIRECTION	LANE	LENGTH (ft)	WIDTH (ft)	PATCH AREA				DOWEL BARS Z0017100 (Each)	SAW CUTS 44213200 (ft)	TIE BARS Z0075300 (Each)	PAVEMENT FABRIC 44213100 (sq. yd)	HMA REM OVER PATCH 0 440022XX (sq. yd)	HMA REPLACEMENT OVER PATCHES 40601005 (Tons)
					TYPE I 10" (sq. yd)	TYPE II 10" (sq. yd)	TYPE III 10" (sq. yd)	TYPE IV 10" (sq. yd)						
1162+85	EASTBOUND	DL	6	12	0.0	8.0	0.0	0.0	20	48.0	0	0.0	0.0	0.0
1163+45	EASTBOUND	DL	6	12	0.0	8.0	0.0	0.0	20	48.0	0	0.0	0.0	0.0
1171+39	EASTBOUND	DL	6	12	0.0	8.0	0.0	0.0	20	48.0	0	0.0	0.0	0.0
1171+52	EASTBOUND	DL	6	12	0.0	8.0	0.0	0.0	20	48.0	0	0.0	0.0	0.0
SHEET TOTALS					0.0 (sq. yd)	32.0 (sq. yd)	0.0 (sq. yd)	0.0 (sq. yd)	80 (Each)	192.0 (ft)	0.0 (Each)	0.0 (sq. yd)	0.0 (sq. yd)	0.0 (Tons)

CLASS B PATCHING TOTALS

PATCH AREA				DOWEL BARS Z0017100 (Each)	SAW CUTS 44213200 (ft)	TIE BARS Z0075300 (Each)	PAVEMENT FABRIC 44213100 (sq. yd)	HMA REM OVER PATCH 0 440022XX (sq. yd)	HMA REPLACEMENT OVER PATCHES 40601005 (Tons)
TYPE I 10" (sq. yd)	TYPE II 10" (sq. yd)	TYPE III 10" (sq. yd)	TYPE IV 10" (sq. yd)						
0.0 (sq. yd)	32.0 (sq. yd)	0.0 (sq. yd)	0.0 (sq. yd)	80 (Each)	192.0 (ft)	0.0 (Each)	0.0 (sq. yd)	0.0 (sq. yd)	0.0 (Tons)

PLOT DATE : 10/24/2006
 FILE NAME : c:\projects\0508006 (b)\70565 text.dgn
 PLOT SCALE : 42,352% / IN.
 USER NAME : stults,j

REVISIONS	
NAME	DATE

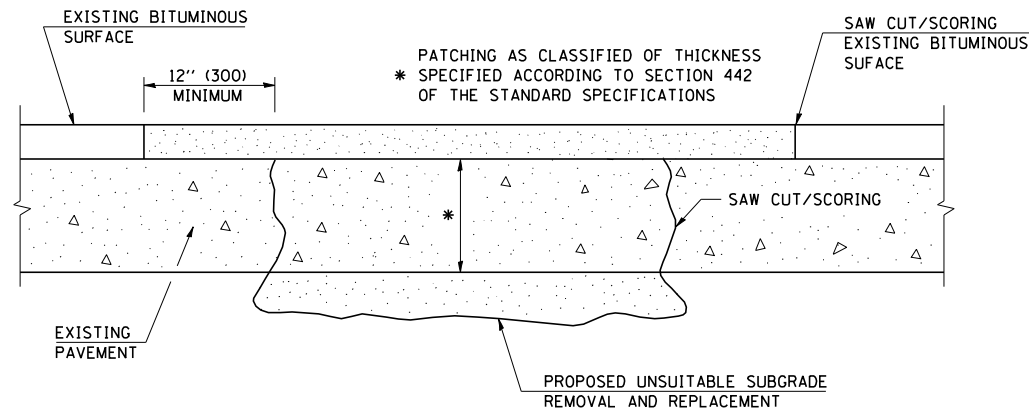
ILLINOIS DEPARTMENT OF TRANSPORTATION

SCHEDULE OF QUANTITIES

SCALE: VERT.
HORIZ.
DATE

DRAWN BY
CHECKED BY

PATCHING WITH HOT-MIX ASPHALT OVERLAY REMOVAL



SEQUENCE OF CONSTRUCTION

1. REMOVE THE EXISTING HOT-MIX ASPHALT.
2. REMOVE AND REPLACE FULL DEPTH PATCHES.
3. REPLACE HOT-MIX ASPHALT.

GENERAL NOTES

1. THE WIDTH OF THE FULL DEPTH PATCH OVER A TRENCH SHALL BE 12" (300) WIDER ON EACH SIDE OF THE TRENCH.
2. FOR BASIS OF PAYMENT SEE RECURRING SPECIAL PROVISION "PATCHING WITH HOT-MIX ASPHALT OVERLAY REMOVAL", CHECK SHEET *16.

	NAME	DATE	REVISIONS	
			NAME	DATE
DESIGNED	T.J.B.	8/06		
CHECKED				
CADD NO.	40601005			

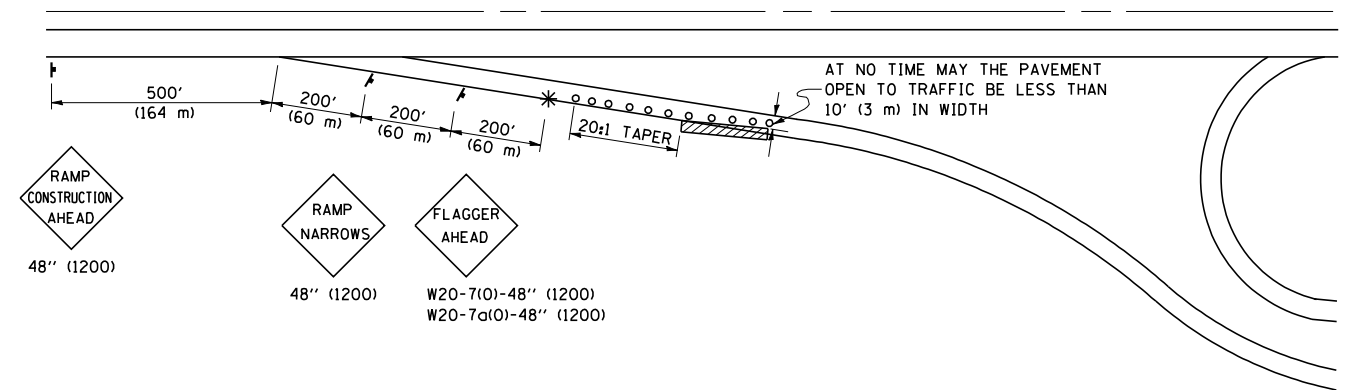
ALL DIMENSIONS ARE IN INCHES (MILLIMETERS) UNLESS OTHERWISE SHOWN.

F.A.I. RTE.	SECTION	COUNTY	TOTAL SHEETS	SHEET NO.
72	:	ELI	13	13

CONTRACT 70565
 • D5 ANNUAL PATCHING 2007-1

SPECIAL DETAIL FOR RAMP WORK AREAS

TYPICAL APPLICATION OF TRAFFIC CONTROL DEVICES



SYMBOLS

- o TYPE I OR II BARRICADES OR DRUMS @ 50' (15 m) CTS.
- * FLAGGER PLACED AS DIRECTED BY THE ENGINEER
- † SIGN ON PORTABLE OR PERMANENT SUPPORT
- ▨ WORK AREA

GENERAL NOTES

1. CONSTRUCTION OPERATIONS SHALL BE CONFINED TO AN AREA NARROW ENOUGH THAT A MINIMUM OF 10' (3 m) OF PAVEMENT SHALL BE OPEN TO TRAFFIC AT ALL TIMES.
2. CONES MAY BE SUBSTITUTED FOR BARRICADES DURING DAY OPERATIONS, AT 25' (7.5 m) SPACING.
3. FULL WIDTH PAVEMENT ON THE RAMPS SHALL BE OPEN TO TRAFFIC AT NIGHT.
4. WHEN NO WORK IS BEING PERFORMED, THE FLAGGER WILL NOT BE REQUIRED. IF THE FLAGGER IS NOT PRESENT, THE FLAGGER SIGNS SHALL BE REMOVED OR COVERED.
5. ALL SIGNS SHALL BE POST MOUNTED IF WORK IN THE AREA EXCEEDS FOUR DAYS OF DAYTIME OPERATIONS.
6. LONGITUDINAL DIMENSIONS MAY BE ADJUSTED SLIGHTLY TO FIT FIELD CONDITIONS.
7. ALL VEHICLES, EQUIPMENT, WORKERS (EXCEPT FLAGGER) AND THEIR ACTIVITIES ARE RESTRICTED AT ALL TIMES TO ONE SIDE OF THE PAVEMENT UNLESS OTHERWISE AUTHORIZED BY THE DISTRICT ENGINEER.

	NAME	DATE	REVISIONS	
			NAME	DATE
DESIGNED	D.L.P.	3-95		
CHECKED	D.L.P.	08/00		
CADD NO.	F-5.01			

ALL DIMENSIONS ARE IN INCHES (MILLIMETERS) UNLESS OTHERWISE SHOWN.