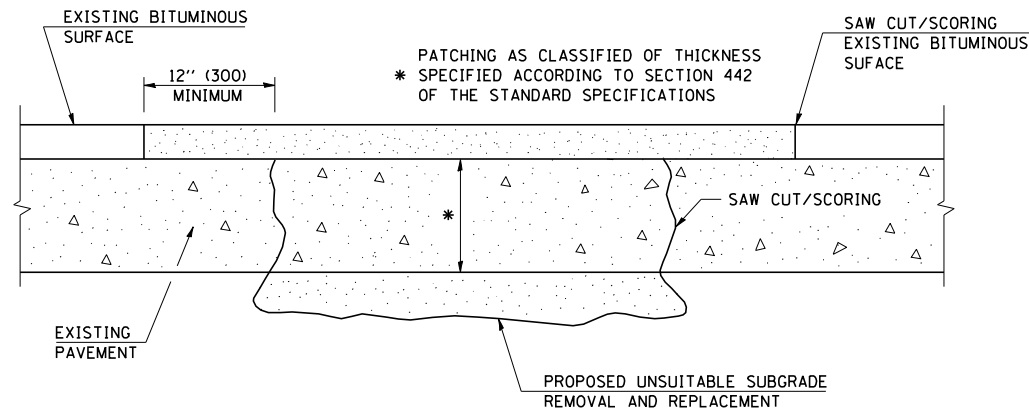


PATCHING WITH HOT-MIX ASPHALT OVERLAY REMOVAL



SEQUENCE OF CONSTRUCTION

1. REMOVE THE EXISTING HOT-MIX ASPHALT.
2. REMOVE AND REPLACE FULL DEPTH PATCHES.
3. REPLACE HOT-MIX ASPHALT.

GENERAL NOTES

1. THE WIDTH OF THE FULL DEPTH PATCH OVER A TRENCH SHALL BE 12" (300) WIDER ON EACH SIDE OF THE TRENCH.
2. FOR BASIS OF PAYMENT SEE RECURRING SPECIAL PROVISION "PATCHING WITH HOT-MIX ASPHALT OVERLAY REMOVAL", CHECK SHEET *16.

	NAME	DATE	REVISIONS	
			NAME	DATE
DESIGNED	T.J.B.	8/06		
CHECKED				
CADD NO.	40601005			

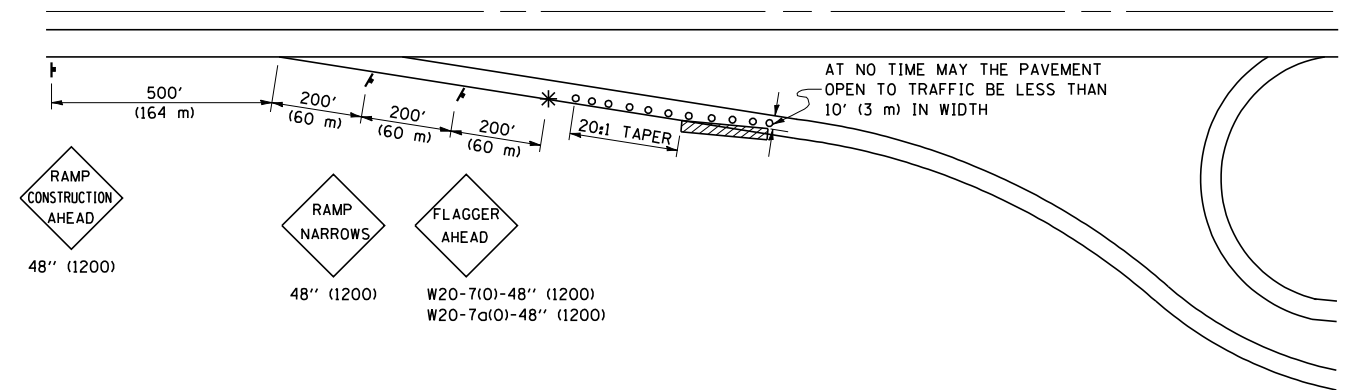
ALL DIMENSIONS ARE IN INCHES (MILLIMETERS) UNLESS OTHERWISE SHOWN.

F.A.I. RTE.	SECTION	COUNTY	TOTAL SHEETS	SHEET NO.
:	::	:::	18	18

CONTRACT 70567
 • 57 & 74
 •• D5 ANNUAL PATCHING 2007-3
 ••• CHAMPAIGN, DOUGLAS, & VERMILION

SPECIAL DETAIL FOR RAMP WORK AREAS

TYPICAL APPLICATION OF TRAFFIC CONTROL DEVICES



SYMBOLS

- o TYPE I OR II BARRICADES OR DRUMS @ 50' (15 m) CTS.
- * FLAGGER PLACED AS DIRECTED BY THE ENGINEER
- † SIGN ON PORTABLE OR PERMANENT SUPPORT
- ▨ WORK AREA

GENERAL NOTES

1. CONSTRUCTION OPERATIONS SHALL BE CONFINED TO AN AREA NARROW ENOUGH THAT A MINIMUM OF 10' (3 m) OF PAVEMENT SHALL BE OPEN TO TRAFFIC AT ALL TIMES.
2. CONES MAY BE SUBSTITUTED FOR BARRICADES DURING DAY OPERATIONS, AT 25' (7.5 m) SPACING.
3. FULL WIDTH PAVEMENT ON THE RAMPS SHALL BE OPEN TO TRAFFIC AT NIGHT.
4. WHEN NO WORK IS BEING PERFORMED, THE FLAGGER WILL NOT BE REQUIRED. IF THE FLAGGER IS NOT PRESENT, THE FLAGGER SIGNS SHALL BE REMOVED OR COVERED.
5. ALL SIGNS SHALL BE POST MOUNTED IF WORK IN THE AREA EXCEEDS FOUR DAYS OF DAYTIME OPERATIONS.
6. LONGITUDINAL DIMENSIONS MAY BE ADJUSTED SLIGHTLY TO FIT FIELD CONDITIONS.
7. ALL VEHICLES, EQUIPMENT, WORKERS (EXCEPT FLAGGER) AND THEIR ACTIVITIES ARE RESTRICTED AT ALL TIMES TO ONE SIDE OF THE PAVEMENT UNLESS OTHERWISE AUTHORIZED BY THE DISTRICT ENGINEER.

	NAME	DATE	REVISIONS	
			NAME	DATE
DESIGNED	D.L.P.	3-95		
CHECKED			D.L.P.	08/00
CADD NO.	F-5.01		K.A.G.	01/05

ALL DIMENSIONS ARE IN INCHES (MILLIMETERS) UNLESS OTHERWISE SHOWN.