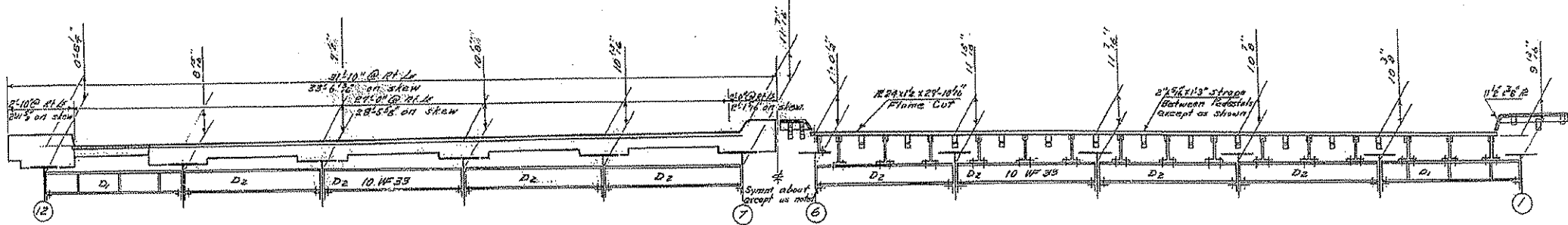


F.A. RTE.	SECTION	COUNTY	TOTAL SHEETS	SHEET NO.
74	(14-11)	CHAMPAIGN	22	20
CONTRACT NO. 70622				

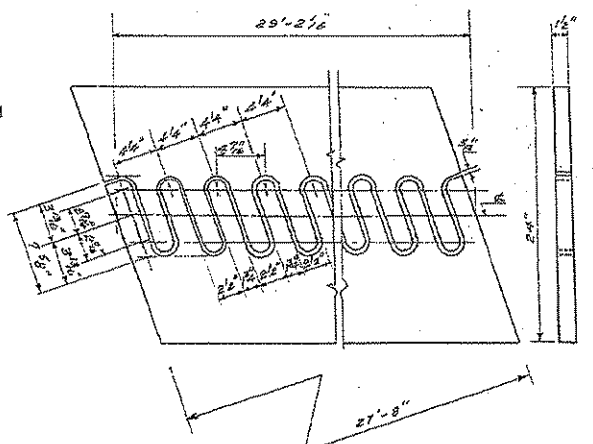
**FOR INFORMATION ONLY  
NOT FOR CONSTRUCTION**

STATE OF ILLINOIS  
DEPARTMENT OF PUBLIC WORKS & BUILDINGS  
DIVISION OF HIGHWAYS

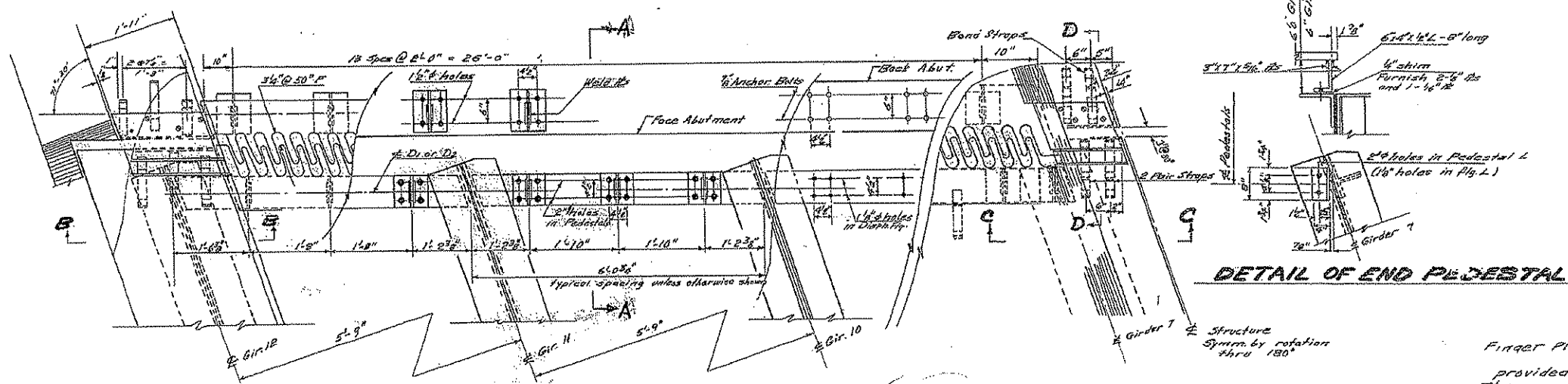
SCALE	SECTION	COUNTY	TOTAL SHEETS	SHEET NO.
1/4" = 1'-0"	14-VB	CHAMPAIGN	20	14
FED. ROAD DIST. NO. 1	14-VF		16	14
SHEETS				



**HALF ELEVATION OF ROADWAY**      **HALF ELEVATION OF STEEL FABRICATION**  
**ELEVATION-EXPANSION GUARD-A**  
**WEST ABUTMENT**



**DETAIL OF FLAME CUT PLATE**  
Match mark after cutting

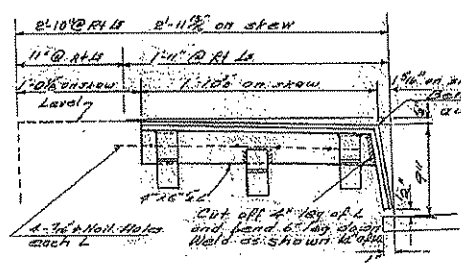


**PLAN-EXPANSION GUARD A**

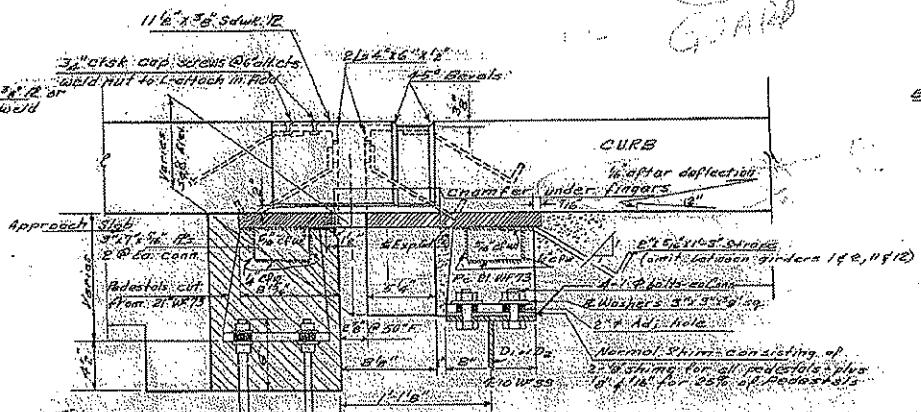
**DETAIL OF END PEDESTAL**

**NOTES**

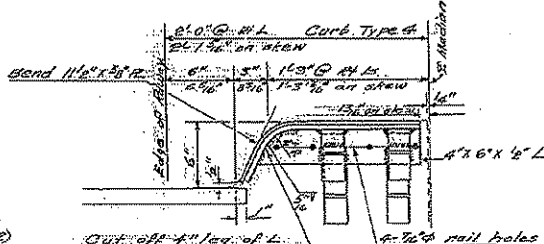
Finger Plates shall be 1/2" thick provided by Art. 55.4(C) of the Std. Specs. The roadway expansion B shall be fabricated and erected to fit the surfaces of the roadway and sidewalks. All welds shall be 3/8" unless otherwise noted. Roadway expansion guards shall be assembled in the shop in proper position and shall be left assembled for shop inspection before painting. Painting shall be done in accordance with Std. Specs. 57.4(c). Expansion Guards, Bolts & Nuts will be paid for at the unit price bid for Structural Steel. The wt. of Expansion Guard A complete for bridge included in the Bill of Material on Sheet No. 1 as Structural Steel is 11,300 lbs. Paint surfaces that are inaccessible after erection with two shop coats of red lead paint. Copper bearing steel (ASTM designation A-7 with 0.2% copper added) shall be used in the finger plates, 2" x 6" x 1/2" L's, 3" x 7" x 5/8" Rs and the 1 1/2" x 3/8" sidewalk plates.



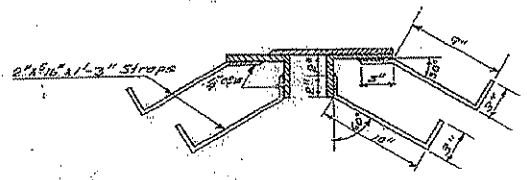
**SEC-B-B**



**SEC-A-A**



**SEC-C-C**



**SEC-D-D**

DESIGNED: *V.W. R...*  
CHECKED: *M.G. P...*  
DRAWN: *V.B.N.*  
CHECKED: *M.G. P...*

EXAMINED: *V.W. R...*  
PASSED: *[Signature]*  
APPROVED: *[Signature]*

Sept 23, 1955  
Provide 1 nut & 2-28" pipe washers each bolt (1" thread)

**EXPANSION GUARD A  
(WEST ABUTMENT)  
I.C.R.R. OVERHEAD  
F.A. RT. 39 SEC. 14-VB-VF  
CHAMPAIGN COUNTY  
STA. 219+00.55**