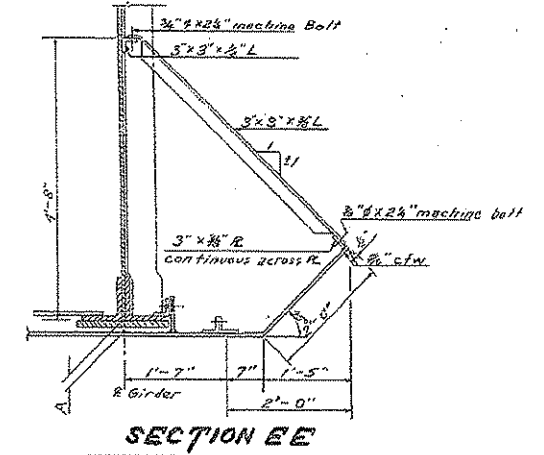
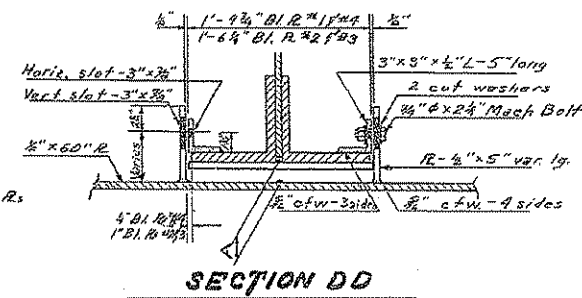
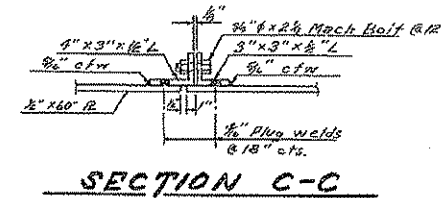
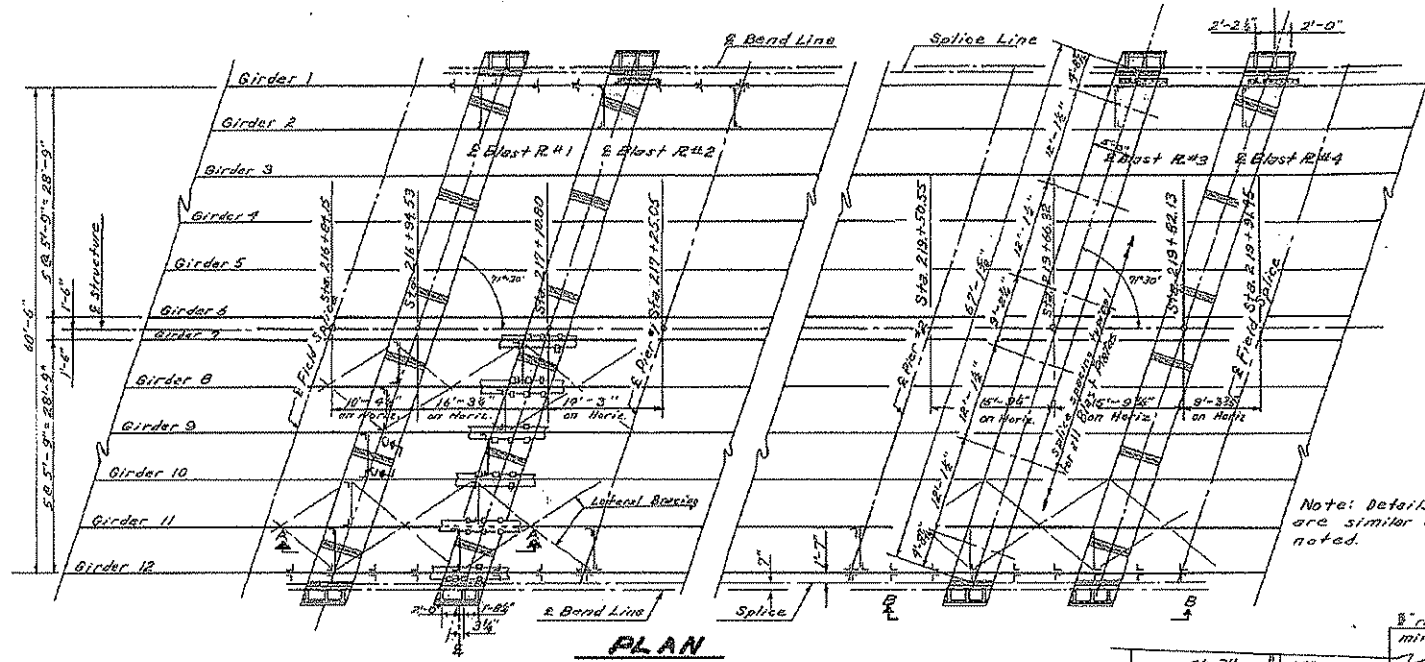
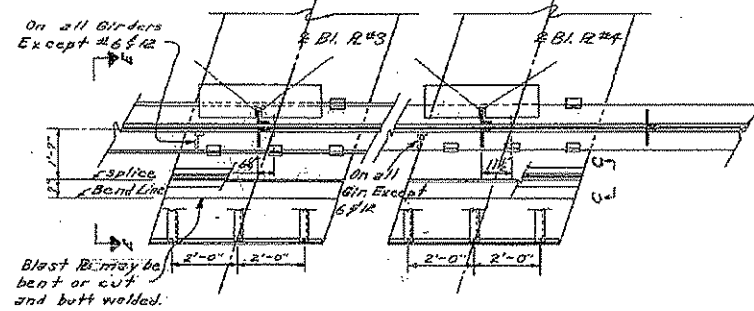
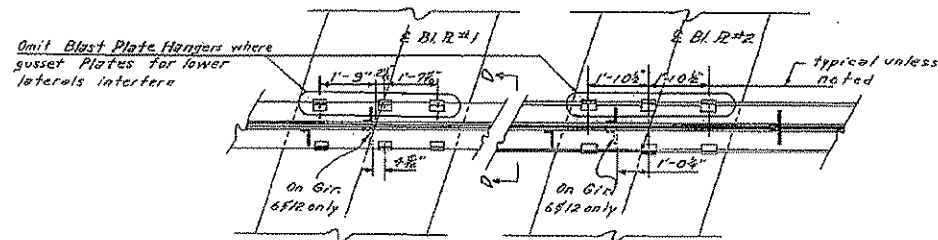
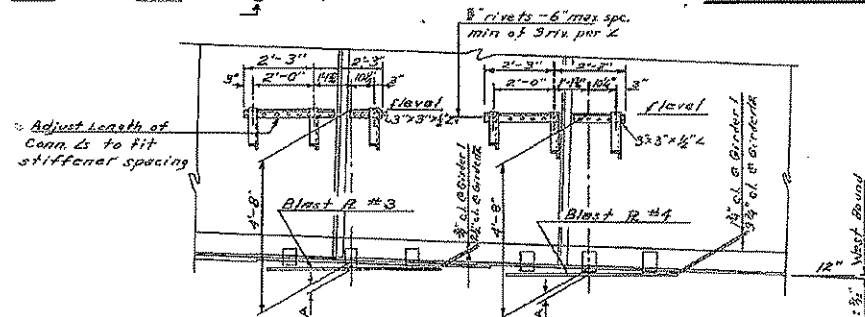
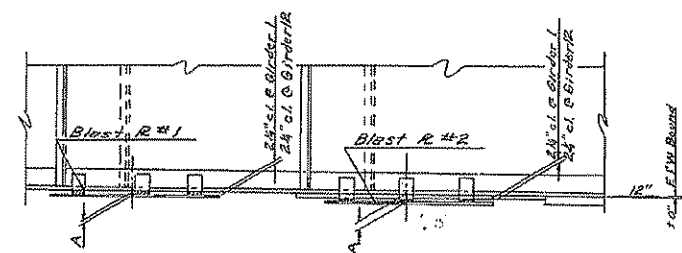


**FOR INFORMATION ONLY
NOT FOR CONSTRUCTION**

STATE OF ILLINOIS
DEPARTMENT OF PUBLIC WORKS & BUILDINGS
DIVISION OF HIGHWAYS



Note: Details for all R's are similar unless noted.



NOTES

Blast Plates shall be 1/2" thick and shall conform to ASTM Std. Specification A-7 for structural steel except that 0.2% copper shall be added.

All connection plates, angles, bolts & nuts shall be paid for at the unit price bid for structural steel. The wt. of Blast Plates and accessories which are included in the Bill of Material on Sheet # 4 as structural steel is 37,040 lbs.

All bolts, washers and nuts shall be galvanized.

Painting shall be the same as for structural steel.

Blast Plates shall be level.

BLAST PLATES

I.C. RR OVERHEAD
FA RT. 39 SEC. 14VB-VF
CHAMPAIGN COUNTY
STA. 219+00.55

DESIGNED: *M. G. Oster*
CHECKED: *M. G. Oster*
DRAWN: *M. G. Oster*
STULTS
CHECKED: *M. G. Oster*

EXAMINED: *V. M. Romine*
PASSED: *[Signature]*
APPROVED: *[Signature]*
CHIEF ENGINEER

Sept. 23, 1958

	1	2	3	4	5	6	7	8	9	10	11	12
1	2 1/2"	2 1/2"	3 1/2"	4 1/2"	5 1/2"	5 1/2"	6 1/2"	7 1/2"	8 1/2"	9 1/2"	10 1/2"	11 1/2"
2	2 1/2"	2 1/2"	3 1/2"	4 1/2"	5 1/2"	5 1/2"	6 1/2"	7 1/2"	8 1/2"	9 1/2"	10 1/2"	11 1/2"
3	2 1/2"	2 1/2"	3 1/2"	4 1/2"	5 1/2"	5 1/2"	6 1/2"	7 1/2"	8 1/2"	9 1/2"	10 1/2"	11 1/2"
4	2 1/2"	2 1/2"	3 1/2"	4 1/2"	5 1/2"	5 1/2"	6 1/2"	7 1/2"	8 1/2"	9 1/2"	10 1/2"	11 1/2"

DIMENSIONS "A"

Dimensions "A" are at intersection of Blast R and Girders