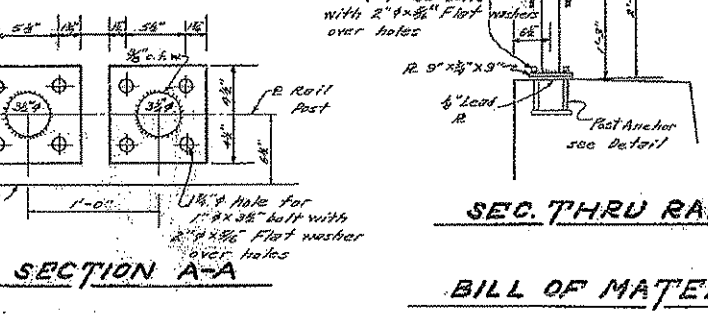
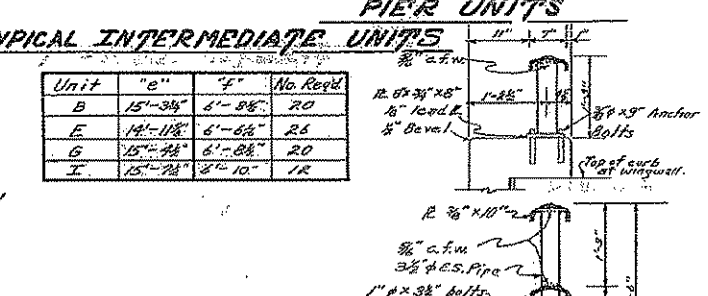
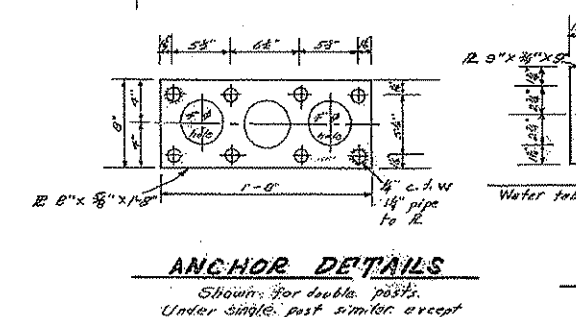
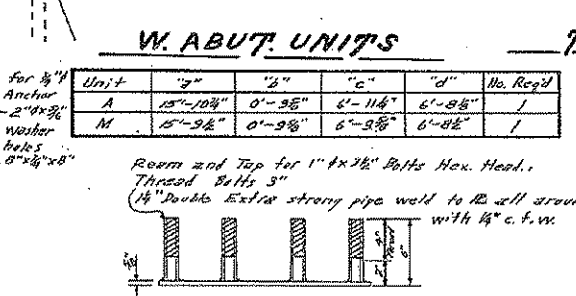
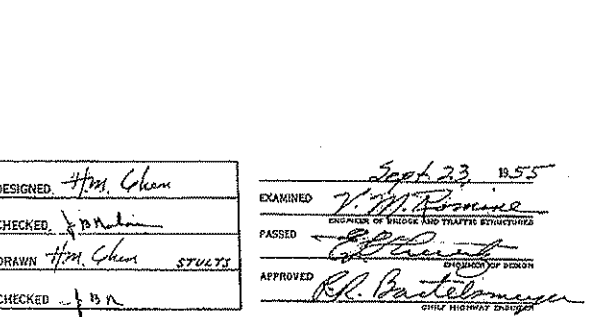
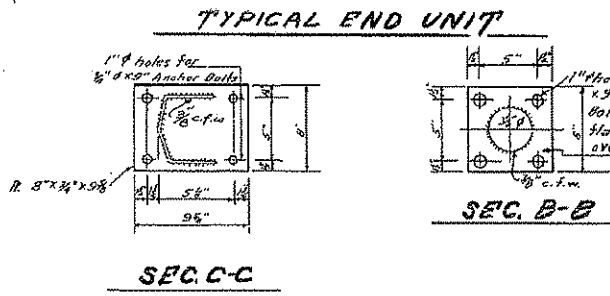
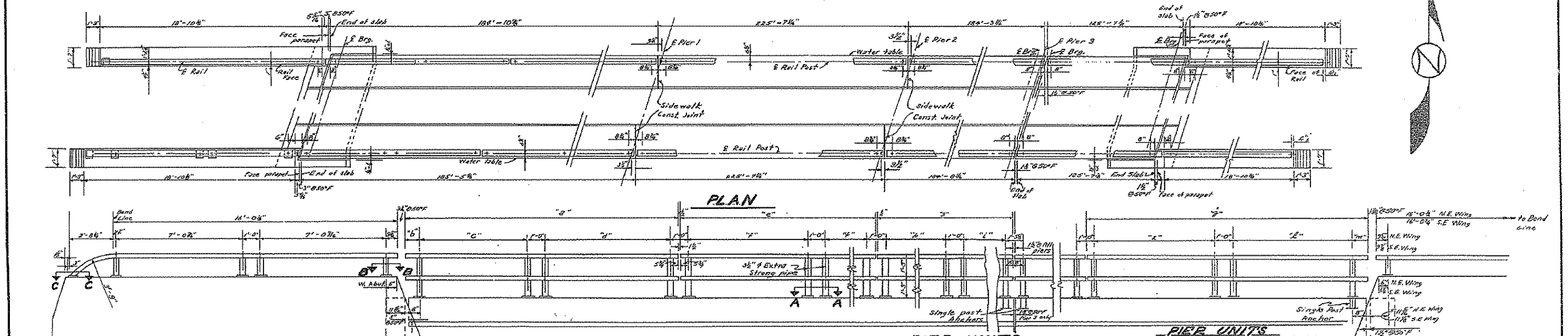
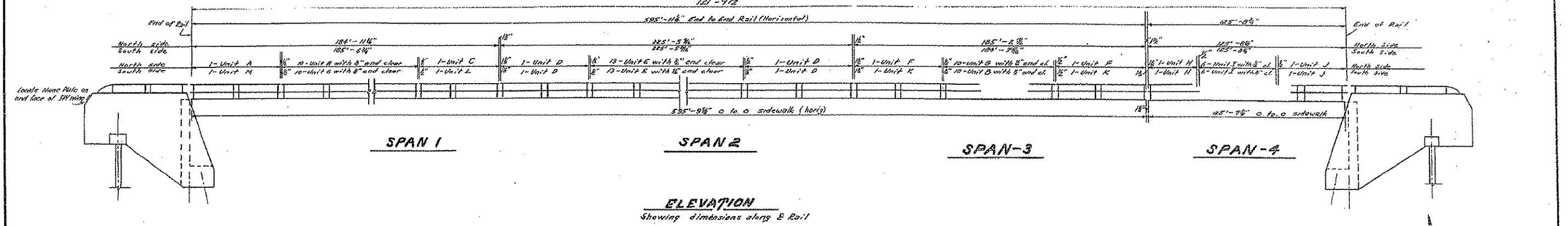


**FOR INFORMATION ONLY
NOT FOR CONSTRUCTION**

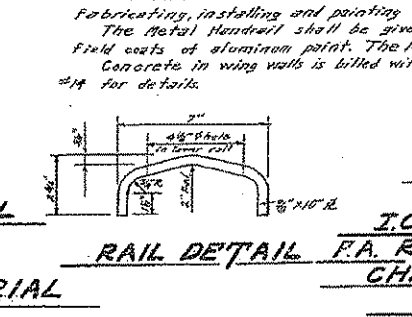
STATE OF ILLINOIS
DEPARTMENT OF PUBLIC WORKS & BUILDINGS
DIVISION OF HIGHWAYS

PROJECT NO.	FACON	COUNTY	TOTAL SHEETS	SHEET NO.
14-VB	14-VF	CHAMPAIGN	20	16
SHEET NO. 13 16 SHEETS				



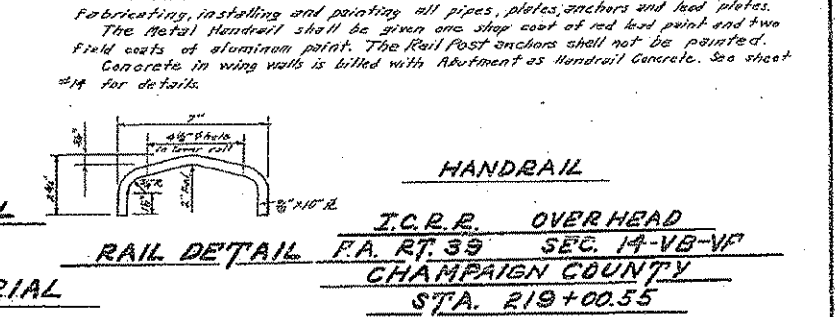
Unit	"h"	"i"	"j"	No. Req'd
C	15'-6"	6'-8 1/2"	6'-8 1/2"	1
D	15'-7 1/2"	6'-8 1/2"	6'-8 1/2"	1
F	15'-6 1/2"	6'-8 1/2"	6'-7 1/2"	2
H	15'-9 1/2"	6'-10"	6'-10"	2
K	15'-6 1/2"	6'-8 1/2"	6'-8 1/2"	2
L	15'-6 1/2"	6'-8 1/2"	6'-8 1/2"	1

PIER UNITS



Unit	"k"	"l"	"m"	No. Req'd
J	15'-10 1/2"	6'-10"	6'-9 1/2"	2

E. ABUT. UNITS



NOTES

The Contract Unit Price for Metal Handrail shall include furnishing, fabricating, installing and painting all pipes, plates, anchors and lead plates. The Metal Handrail shall be given one shop coat of red lead paint and two field coats of aluminum paint. The Rail Post anchors shall not be painted. Concrete in wing walls is filled with Abrument as Handrail Concrete. See sheet #14 for details.

HANDRAIL

BILL OF MATERIAL
Metal Handrail Lin. Ft. 1510

**J.C.R.R. OVER HEAD
F.A. RT. 39 SEC. 14-VB-VF
CHAMPAIGN COUNTY
STA. 219+00.55**

DESIGNED: H.M. Chen
CHECKED: J. P. ...
DRAWN: H.M. Chen
STULTS
APPROVED: R.L. ...

EXAMINED: V.M. ...
PASSED: ...
APPROVED: R.L. ...

DATE: Sept 23, 1955