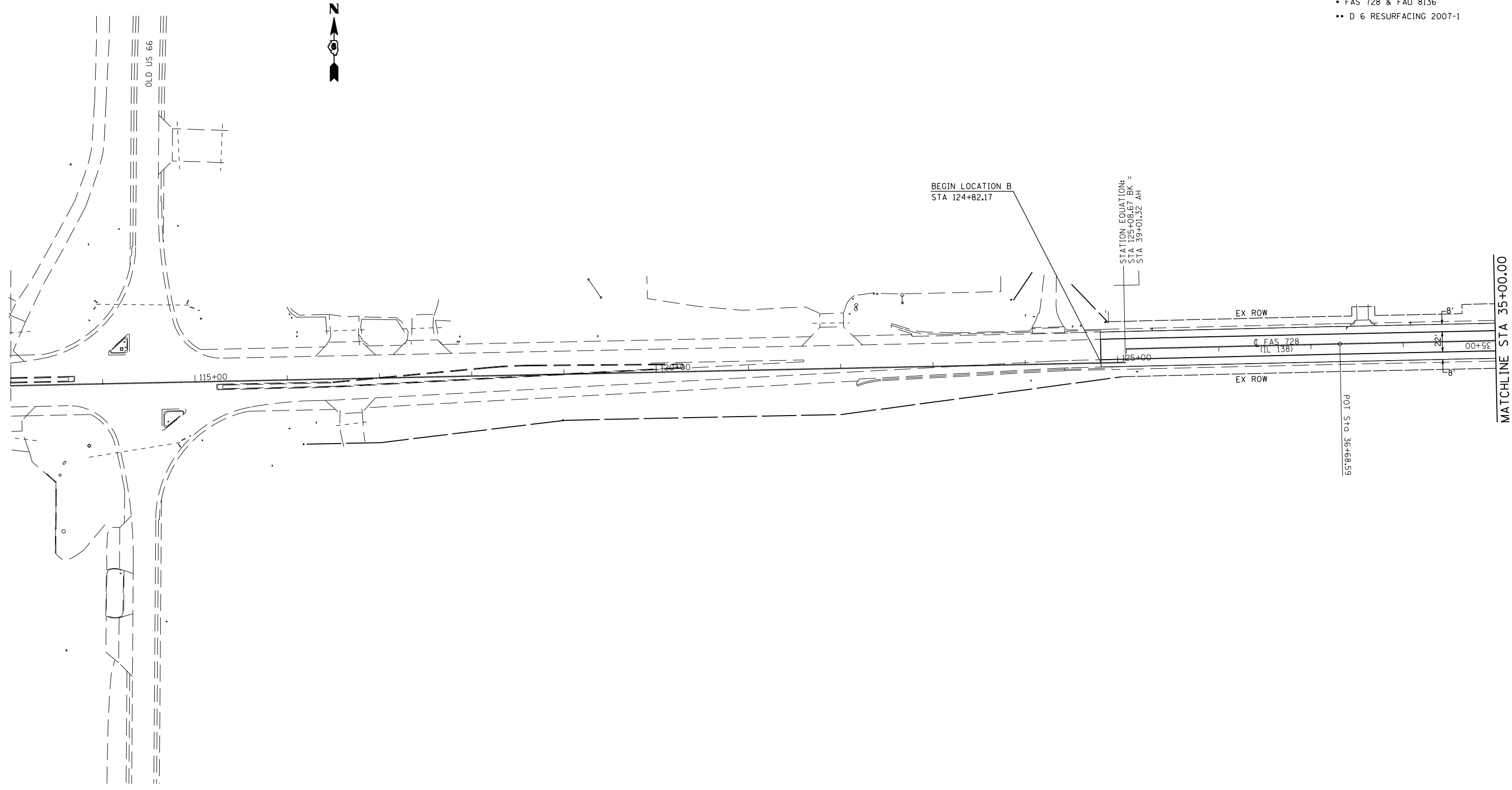


F.A. RTE.	SECTION	COUNTY	TOTAL SHEETS	SHEET NO.
•	••	MACOUPIN	24	15

STA.	TO STA.
FED. ROAD DIST. NO.	ILLINOIS FED. AID PROJECT

- FAS 728 & FAU 8136
- D 6 RESURFACING 2007-1



PLOT DATE = 10/25/2006  
 FILE NAME = c:\projects\652403\sheet50.dgn  
 PLOT SCALE = 1/8"=1'-0" / IN.  
 USER NAME = laughlin-1

REVISIONS	
NAME	DATE

ILLINOIS DEPARTMENT OF TRANSPORTATION  
 PLAN SHEET  
 FAS 728 (IL 138) & FAU 8136 (STAUNTON ROAD)  
 SECTION D 6 RESURFACING 2007-1  
 MACOUPIN COUNTY

SCALE: VERT. \_\_\_\_\_  
 HORIZ. \_\_\_\_\_  
 DATE \_\_\_\_\_

DRAWN BY \_\_\_\_\_  
 CHECKED BY \_\_\_\_\_