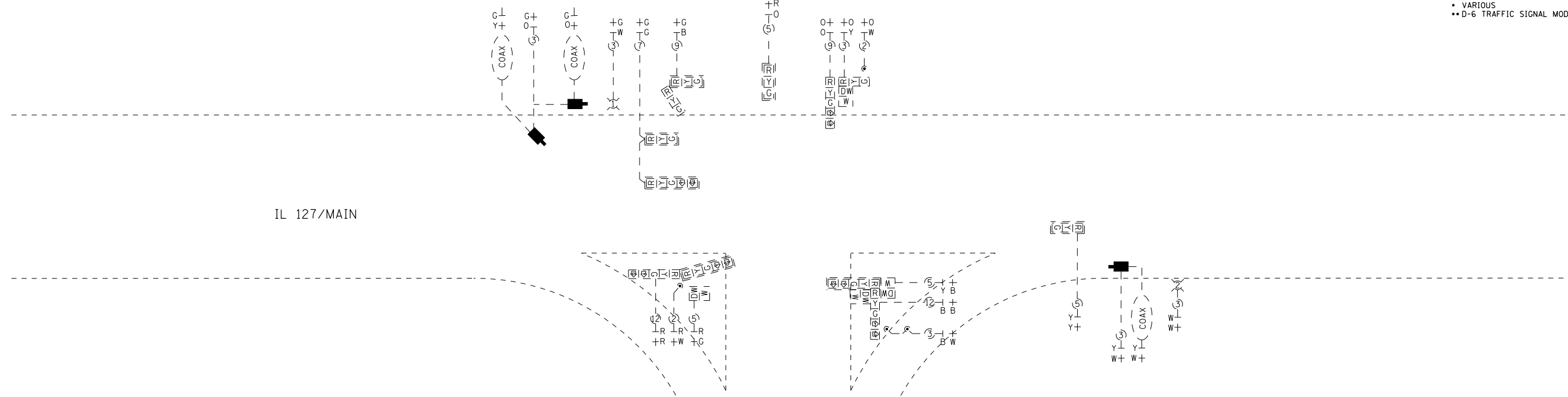


F.A. RTE.	SECTION	COUNTY	TOTAL SHEETS	SHEET NO.
.	..	VARIOUS	30	16
STA.		TO STA.		
FED. ROAD DIST. NO.	ILLINOIS	FED. AID PROJECT		
* VARIOUS				
** D-6 TRAFFIC SIGNAL MOD 2004-2				



IL 127/MAIN

IL 16/SCHOOL ST

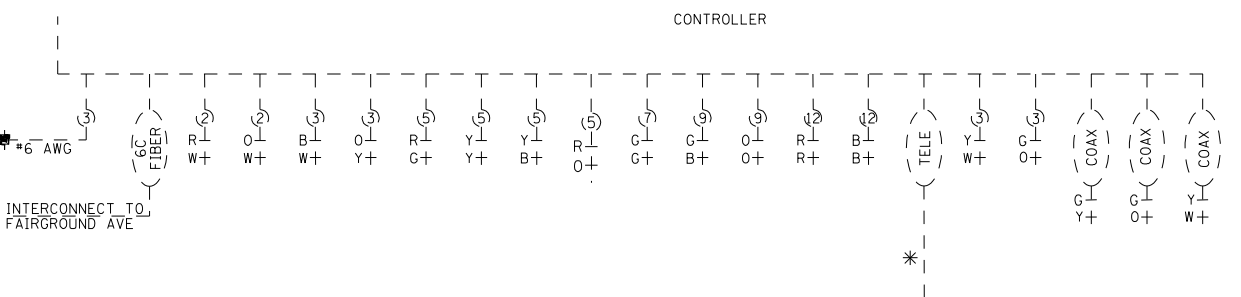
TRAFFIC SIGNAL QUANTITIES

MAIN & SCHOOL (HILLSBORO)

QUANTITY	UNIT	ITEM
1	EACH	MODIFY EXISTING CONTROLLER CABINET
5	EACH	REBUILD EXISTING TRAFFIC SIGNAL FACE, 3-SECTION, LED
6	EACH	REBUILD EXISTING TRAFFIC SIGNAL FACE, 5-SECTION, LED
4	EACH	REBUILD EXISTING PEDESTRIAN SIGNAL HEAD FACE, LED

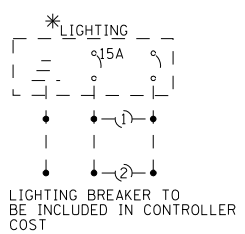
NOTES:

- REBUILD EXISTING SIGNAL HEAD FACE SHALL INCLUDE REMOVING BACK REFLECTOR AND REPLACING ALL INCANDESCENT LAMPS AND LENSES WITH LED INDICATIONS.



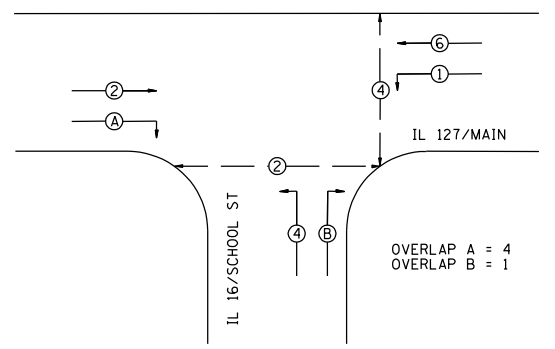
CONTROLLER

INTERCONNECT TO FAIRGROUND AVE



LIGHTING BREAKER TO BE INCLUDED IN CONTROLLER COST

* BY OTHERS



OVERLAP A = 4
OVERLAP B = 1

PHASE DESIGNATION

REVISIONS	
NAME	DATE

ILLINOIS DEPARTMENT OF TRANSPORTATION

EXISTING TRAFFIC SIGNALS

MAIN ST & SCHOOL ST
MONTGOMERY COUNTY

SCALE: VERT. HORIZ. DATE: MAY '06

DRAWN BY: KDA
CHECKED BY: