

F.A. RTE.	SECTION	COUNTY	TOTAL SHEETS	SHEET NO.
*	**	VARIOUS	30	19
STA.		TO STA.		
FED. ROAD DIST. NO.	ILLINOIS	FED. AID PROJECT		
* VARIOUS				
** D-6 TRAFFIC SIGNAL MOD 2004-2				

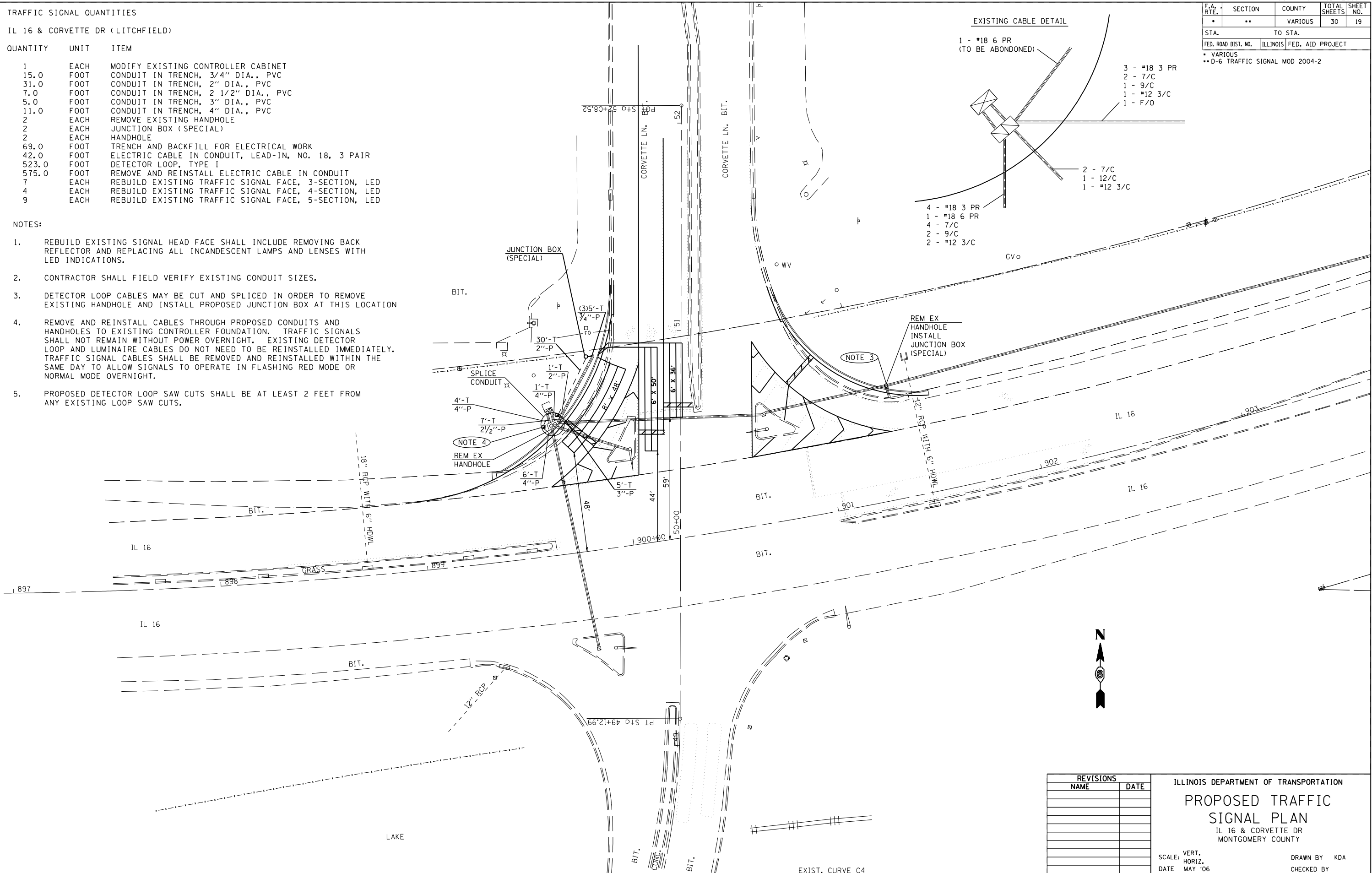
TRAFFIC SIGNAL QUANTITIES

IL 16 & CORVETTE DR (LITCHFIELD)

QUANTITY	UNIT	ITEM
1	EACH	MODIFY EXISTING CONTROLLER CABINET
15.0	FOOT	CONDUIT IN TRENCH, 3/4" DIA., PVC
31.0	FOOT	CONDUIT IN TRENCH, 2" DIA., PVC
7.0	FOOT	CONDUIT IN TRENCH, 2 1/2" DIA., PVC
5.0	FOOT	CONDUIT IN TRENCH, 3" DIA., PVC
11.0	FOOT	CONDUIT IN TRENCH, 4" DIA., PVC
2	EACH	REMOVE EXISTING HANDHOLE
2	EACH	JUNCTION BOX (SPECIAL)
2	EACH	HANDHOLE
69.0	FOOT	TRENCH AND BACKFILL FOR ELECTRICAL WORK
42.0	FOOT	ELECTRIC CABLE IN CONDUIT, LEAD-IN, NO. 18, 3 PAIR
523.0	FOOT	DETECTOR LOOP, TYPE I
575.0	FOOT	REMOVE AND REINSTALL ELECTRIC CABLE IN CONDUIT
7	EACH	REBUILD EXISTING TRAFFIC SIGNAL FACE, 3-SECTION, LED
4	EACH	REBUILD EXISTING TRAFFIC SIGNAL FACE, 4-SECTION, LED
9	EACH	REBUILD EXISTING TRAFFIC SIGNAL FACE, 5-SECTION, LED

NOTES:

- REBUILD EXISTING SIGNAL HEAD FACE SHALL INCLUDE REMOVING BACK REFLECTOR AND REPLACING ALL INCANDESCENT LAMPS AND LENSES WITH LED INDICATIONS.
- CONTRACTOR SHALL FIELD VERIFY EXISTING CONDUIT SIZES.
- DETECTOR LOOP CABLES MAY BE CUT AND SPLICED IN ORDER TO REMOVE EXISTING HANDHOLE AND INSTALL PROPOSED JUNCTION BOX AT THIS LOCATION
- REMOVE AND REINSTALL CABLES THROUGH PROPOSED CONDUITS AND HANDHOLES TO EXISTING CONTROLLER FOUNDATION. TRAFFIC SIGNALS SHALL NOT REMAIN WITHOUT POWER OVERNIGHT. EXISTING DETECTOR LOOP AND LUMINAIRE CABLES DO NOT NEED TO BE REINSTALLED IMMEDIATELY. TRAFFIC SIGNAL CABLES SHALL BE REMOVED AND REINSTALLED WITHIN THE SAME DAY TO ALLOW SIGNALS TO OPERATE IN FLASHING RED MODE OR NORMAL MODE OVERNIGHT.
- PROPOSED DETECTOR LOOP SAW CUTS SHALL BE AT LEAST 2 FEET FROM ANY EXISTING LOOP SAW CUTS.



REVISIONS	
NAME	DATE

ILLINOIS DEPARTMENT OF TRANSPORTATION  
**PROPOSED TRAFFIC SIGNAL PLAN**  
 IL 16 & CORVETTE DR  
 MONTGOMERY COUNTY

SCALE: VERT. HORIZ.  
 DATE: MAY '06

DRAWN BY: KDA  
 CHECKED BY:

PLOT DATE = 10/24/2005  
 FILE NAME = c:\p\projects\652884\ts\_sheets.m32  
 PLOT SCALE = 42,352% / IN.  
 USER NAME = laughlin-1