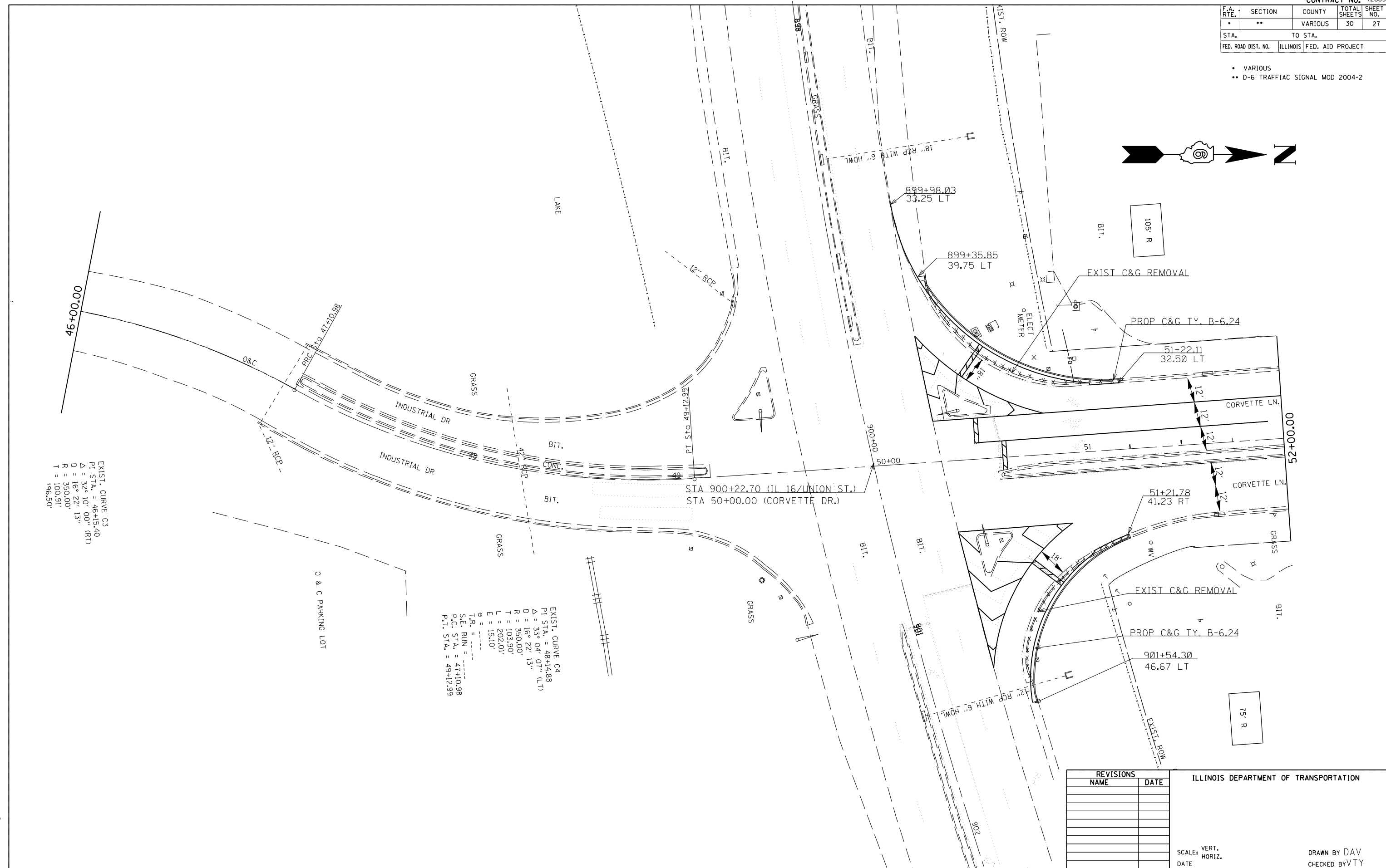


F.A. RTE.	SECTION	COUNTY	TOTAL SHEETS	SHEET NO.
*	**	VARIOUS	30	27
STA.		TO STA.		
FED. ROAD DIST. NO.	ILLINOIS	FED. AID PROJECT		

- VARIOUS
- D-6 TRAFFIAC SIGNAL MOD 2004-2



EXIST. CURVE C3
 P.I. STA. = 46+15.40
 $\Delta = 32^\circ 10' 00''$ (RT)
 $D = 16^\circ 22' 13''$
 $R = 350.00'$
 $T = 100.91'$
 $196.50'$

EXIST. CURVE C4
 P.I. STA. = 48+14.88
 $\Delta = 35^\circ 04' 07''$ (LT)
 $D = 16^\circ 22' 13''$
 $R = 350.00'$
 $T = 103.90'$
 $L = 202.01'$
 $E = 15.10'$
 $\theta = \dots$
 T.R. =
 S.E. RUN =
 P.C. STA. = 47+10.98
 P.T. STA. = 49+12.99

REVISIONS	
NAME	DATE

ILLINOIS DEPARTMENT OF TRANSPORTATION

SCALE: VERT. DRAWN BY DAV
 HORIZ. CHECKED BY VTY
 DATE

PLOT DATE = 10/24/2005
 FILE NAME = c:\projects\652884\corvette\ludg
 PLOT SCALE = 42.3525' / IN.
 USER NAME = laughlin-1