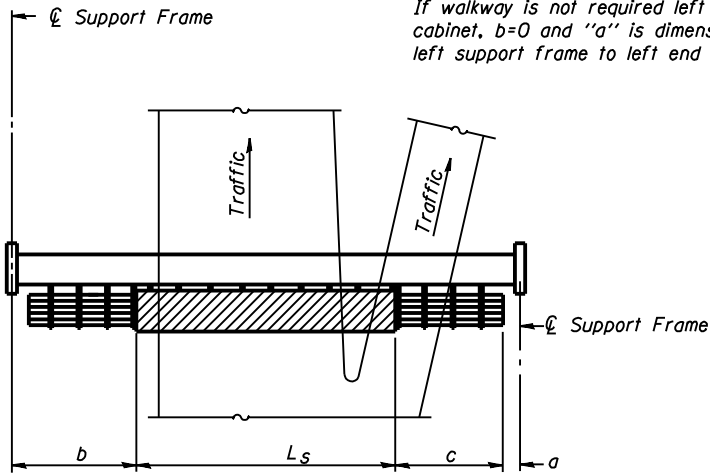


STATE OF ILLINOIS
DEPARTMENT OF TRANSPORTATION

ROUTE NO.	SECTION	COUNTY	SHEET	SHEET	SHEET NO.
F.A.I. 72	D-6 ITS #2	SANGAMON	30	19	---
FED. ROAD DIST. NO. 7	ILLINOIS	FED. AID PROJECT			

① If walkway is required left of the DMS cabinet, $a=1'-6''$ and b =walkway lengths. If walkway is not required left of the DMS cabinet, $b=0$ and " a " is dimension from left support frame to left end of cabinet.

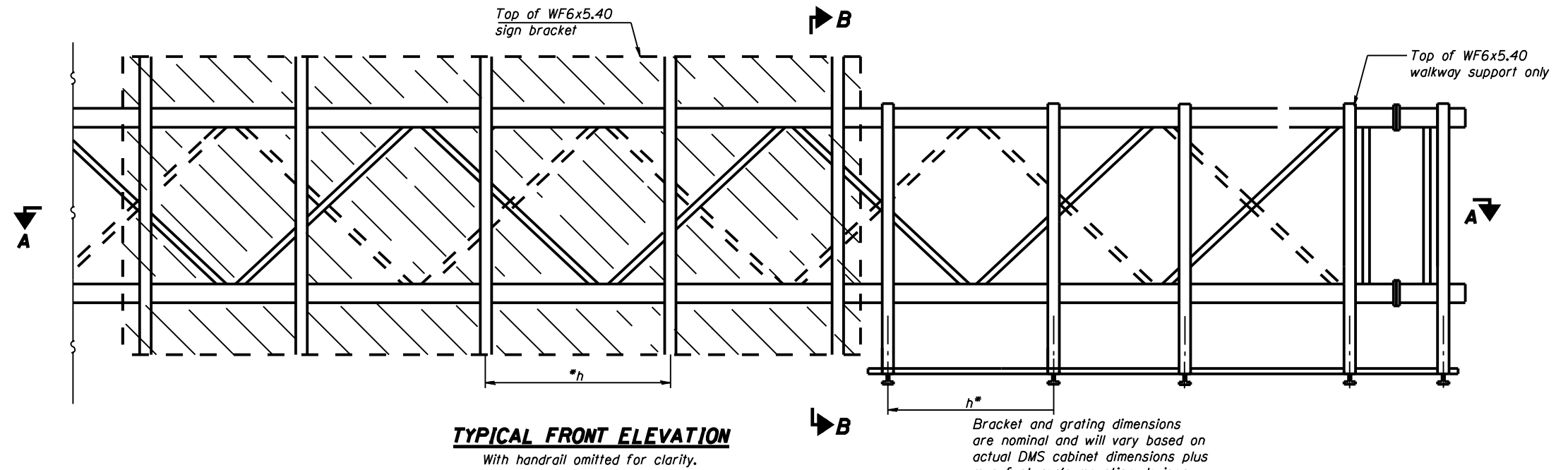


PLAN WALKWAY AND HANDRAIL SKETCH
(Road plan beneath truss varies)

BRACKET TABLE

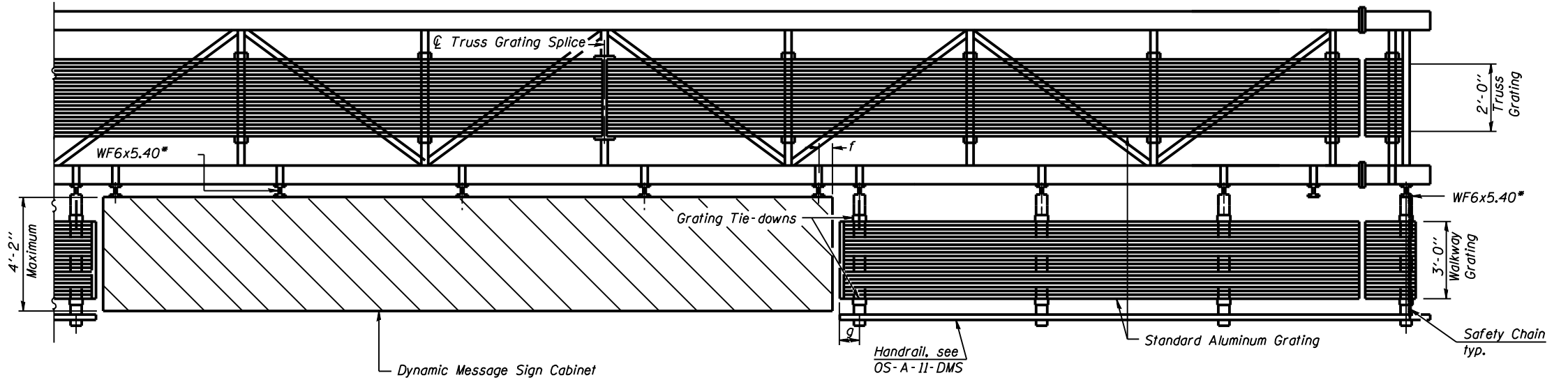
Sign Width		Number Brackets Required
Greater Than	Less Than or Equal To	
	8'-0"	2
8'-0"	14'-0"	3
14'-0"	20'-0"	4
20'-0"	26'-0"	5
26'-0"	32'-0"	6

Walkway and Truss Grating width dimensions are nominal and may vary $\pm 1/2''$ based on available standard widths.



TYPICAL FRONT ELEVATION
With handrail omitted for clarity.

Bracket and grating dimensions are nominal and will vary based on actual DMS cabinet dimensions plus manufacturer's mounting devices.



SECTION A-A

Handrail and walkway shall span a minimum of three brackets between splices and/or gap joints. Place all sign and walkway brackets as close to panel points as practical. Grating and handrail splices placed as needed.

Truss grating to facilitate inspection shall run full length (center to center of support frames) $\pm 12''$ on overhead trusses. Cost of truss grating is included in "Overhead Sign Structure".

Notes:

* Space walkway brackets WF6x5.40 for efficiency and within limits shown:

$f = 12''$ maximum, 4'' minimum (End of sign to \mathcal{C} of nearest bracket)

$g = 12''$ maximum, 4'' minimum (End of walkway grating to \mathcal{C} of nearest support bracket)

$h = 6'-0''$ maximum (\mathcal{C} to \mathcal{C} sign and/or walkway support brackets, WF6x5.40)

Maximum DMS weight = 5000 lbs. 4'-2'' maximum cabinet depth includes depth of cabinet plus connection to WF6x5.40.

For Section B-B and Grating Splice Details, see Base Sheet OS-A-10-DMS.

For Handrail Splice Details, see Base Sheet OS-A-11-DMS.

Structure Number	Station	a	b	c	L_s	Walkway Grating and Handrail Lengths
650841072R090.2	467+50.00	1'-6"	33'-0"	39'-6"	26'-0"	39'-6"
650841072L106.3	171+700.00	1'-6"	42'-10"	29'-8"	26'-0"	29'-8"

**OVERHEAD SIGN STRUCTURES
ALTERNATE ALUMINUM WALKWAY DETAILS
FOR DMS**

F.A.I. 72 (1-72)
SECTION D-6 ITS #2
SANGAMON COUNTY

DESIGNED	
CHECKED	
DRAWN	
CHECKED	

EXAMINED	19
PASSED	

NUMBER	REVISION	DATE