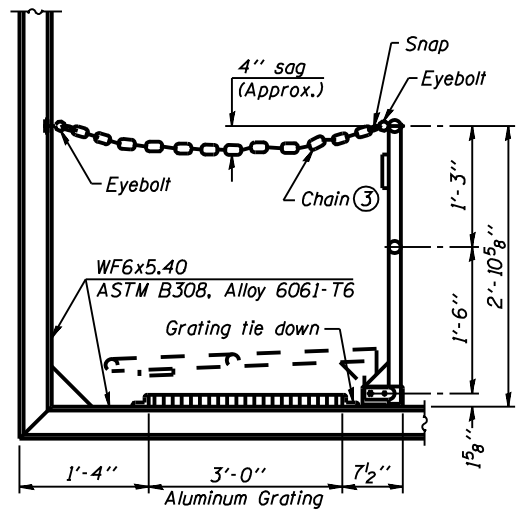


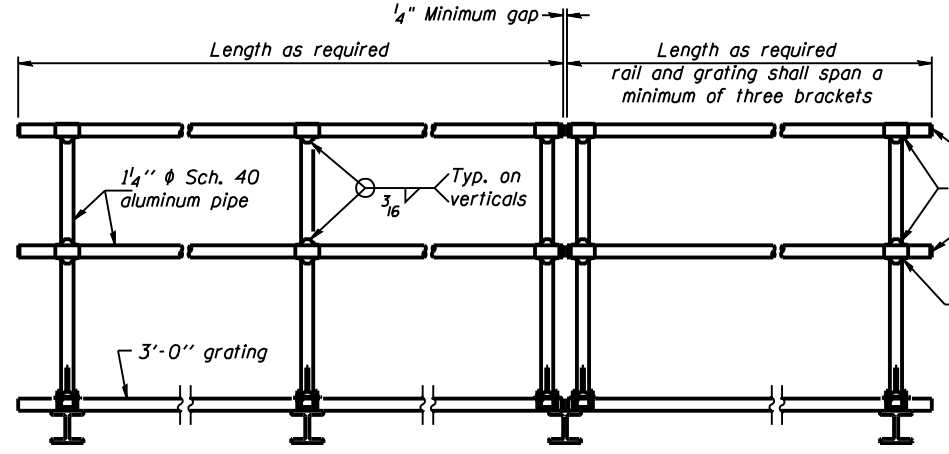
STATE OF ILLINOIS
DEPARTMENT OF TRANSPORTATION

ROUTE NO.	SECTION	COUNTY	SHEETS	SHEET	SHEET NO.
F.A.I. 72	D-6 ITS #2	SANGAMON	30	21	- SHEETS
FED. ROAD DIST. NO. 7	ILLINOIS	FED. AID PROJECT			

Contract # 72A18



SIDE ELEVATION
(Showing safety chain w/o sign)

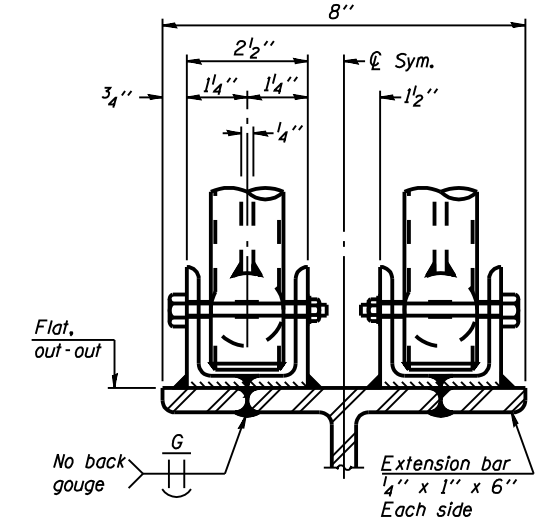


FRONT ELEVATION

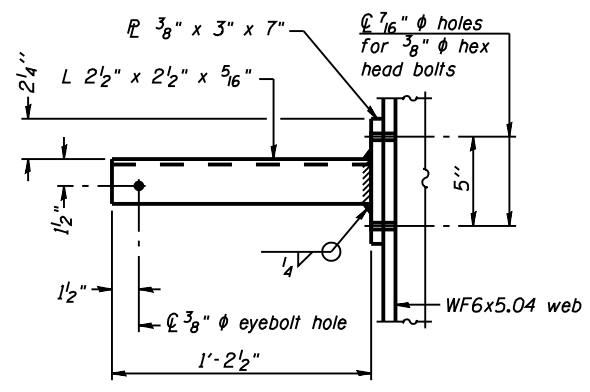
HANDRAIL DETAILS

Handrail pipe shall be ASTM B241, Alloy 6063-T6 or Alloy 6061-T6.

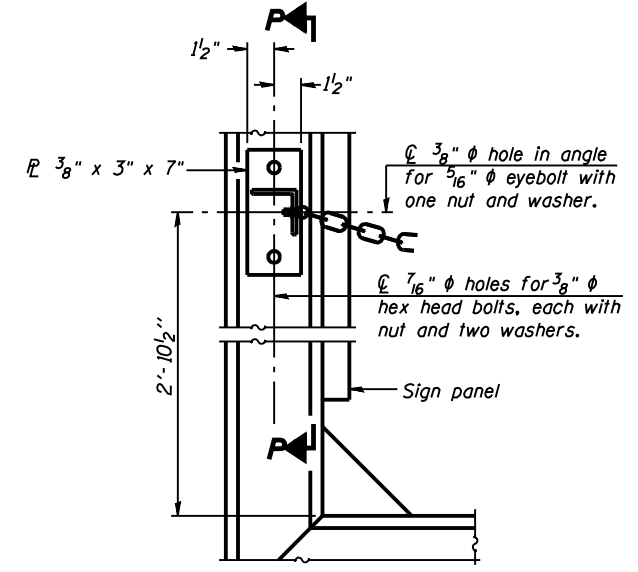
② Horizontal handrail member shall be continuous thru fitting. Provide 7/16 inch diameter hole in fitting for 3/8 inch diameter bolt. Field drill 7/16 inch diameter hole in horizontal rail member. Provide washer and locknut for bolt. (Use 5/16 inch eyebolts in 7/16 inch diameter holes on top rail at ends only.)



ELEVATION AT HANDRAIL JOINT ④

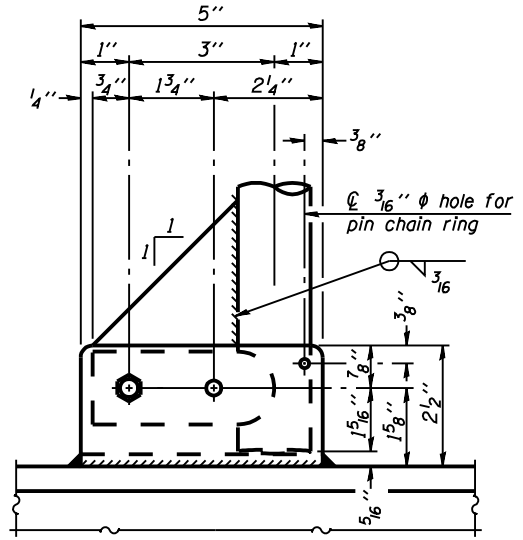


SECTION P-P

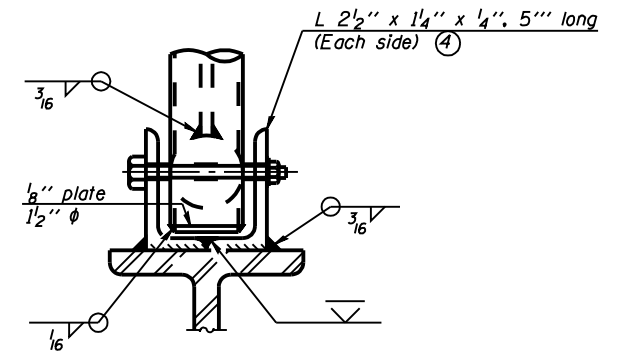


ALTERNATE SAFETY CHAIN ATTACHMENT

(With Sign Present)
Items not shown same as "Side Elevation" of "Handrail Details"

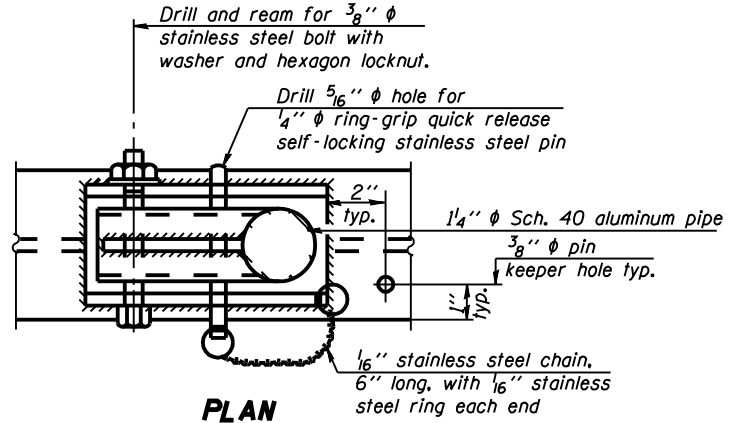


SIDE ELEVATION

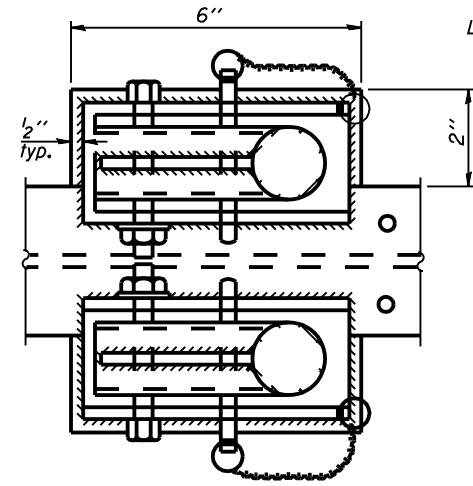


FRONT ELEVATION

See "ELEVATION" at right for dimensions.

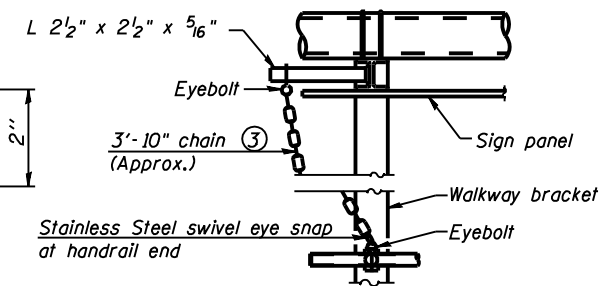


PLAN
DETAIL E HANDRAIL HINGE



PLAN AT HANDRAIL JOINT

Details not shown same as "PLAN"

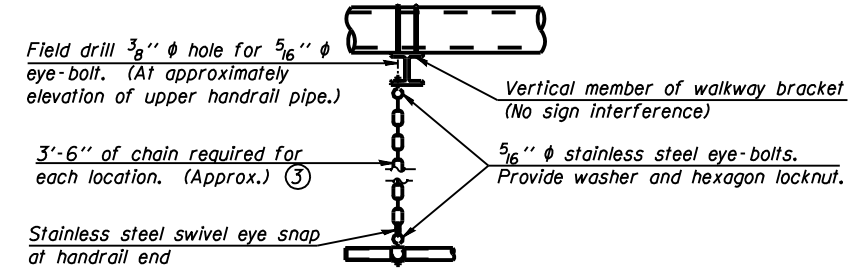


ALTERNATE SAFETY CHAIN ATTACHMENT

Details not shown similar to "Safety Chain" Details (Walkway omitted for clarity)

③ 3/16 inch type 304L stainless steel chain, approximately 12 links per foot.

④ Extrusions may be used in lieu of the details shown, with approval of the Engineer.



SAFETY CHAIN

One required for each end of each walkway.

**OVERHEAD SIGN STRUCTURES
ALTERNATE ALUMINUM HANDRAIL DETAILS
FOR DMS**

F.A.I. 72 (I-72)
SECTION D-6 ITS #2
SANGAMON COUNTY

DESIGNED -	200
CHECKED -	ENGINEER OF BRIDGE DESIGN
DRAWN -	PASSED
CHECKED -	ENGINEER OF BRIDGES AND STRUCTURES

NUMBER	REVISION	DATE