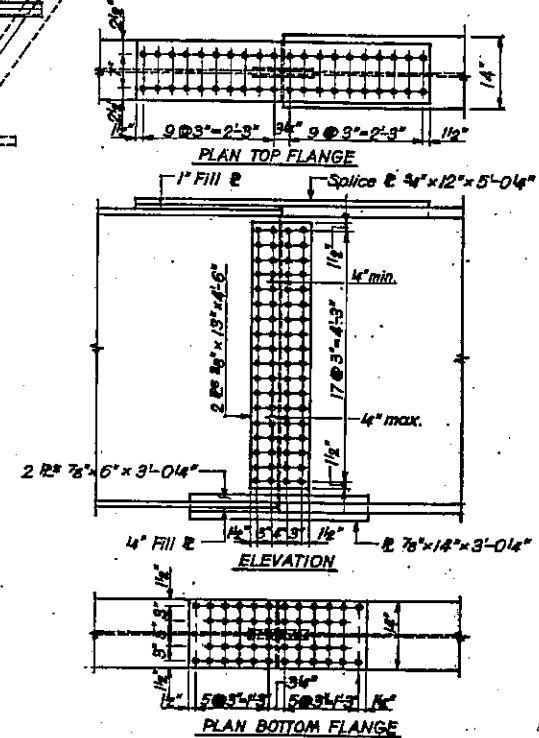
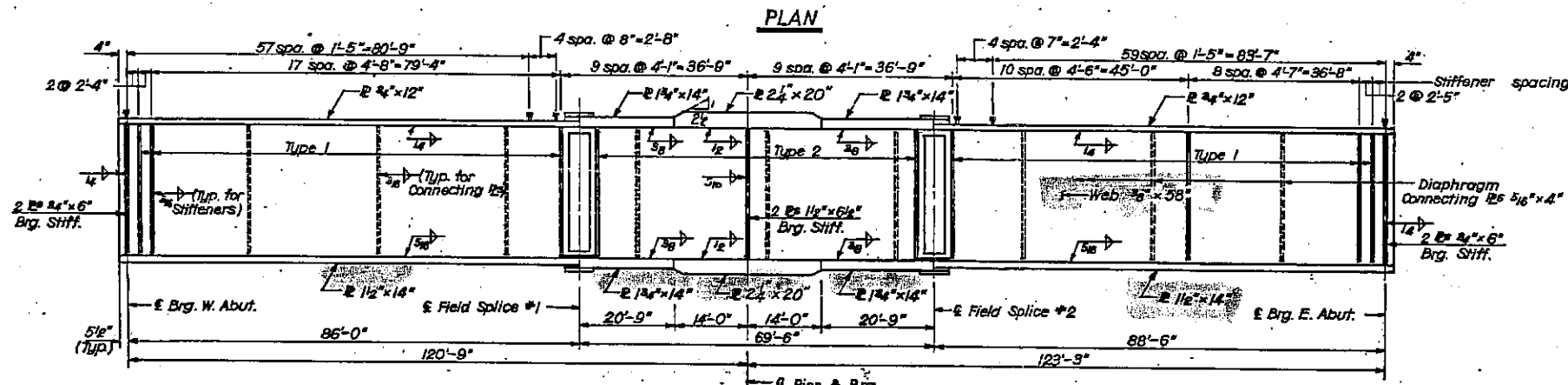
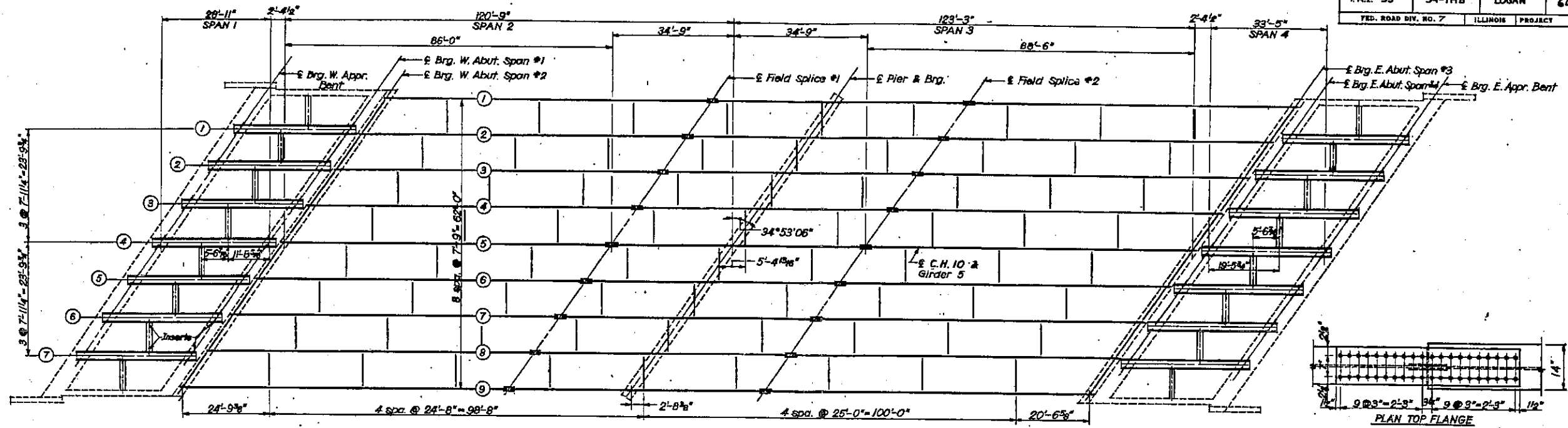
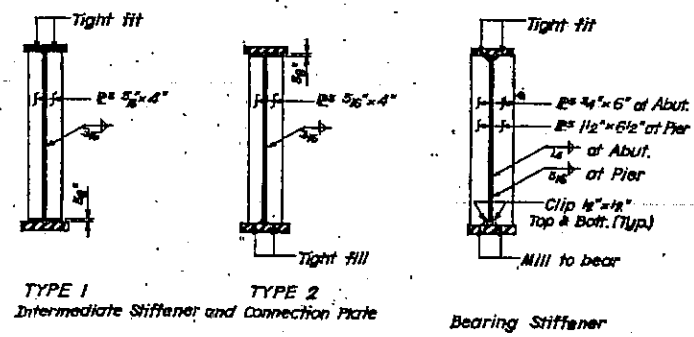


ROUTE NO.	SECTION	COUNTY	TOTAL SHEETS	SHEET NO.
FAL-55	54-1HB	LOGAN	60	30
FED. ROAD DIV. NO. 7		ILLINOIS PROJECT		



TOP OF GIRDER WEB ELEVATIONS FOR FABRICATION  
(DEFLECTION NOT INCLUDED)

Location	Girder 1	Girder 2	Girder 3	Girder 4	Girder 5	Girder 6	Girder 7	Girder 8	Girder 9
Brig. W. Abut.	621.495	621.605	621.715	621.825	621.935	621.785	621.645	621.495	621.355
Splice #1	621.325	621.462	621.601	621.740	621.898	621.785	621.645	621.523	621.411
Brig. Pier	621.139	621.289	621.439	621.589	621.729	621.629	621.529	621.419	621.319
Splice #2	620.953	621.116	621.277	621.438	621.590	621.503	621.413	621.315	621.227
Brig. E. Abut.	620.185	620.365	620.555	620.745	620.925	620.865	620.805	620.745	620.685



C-96-014-07  
SN 054-0038  
EXISTING BRIDGE PLANS  
FOR INFORMATION ONLY  
(NOT TO SCALE)

BY: H.N.  
BY: B.B.  
BY: V.B.