

F.A.P. RTE.	SECTION	COUNTY	TOTAL SHEETS	SHEET NO.
774	(107) LS	EFFINGHAM	8	5
FED. ROAD DIST. NO.		ILLINOIS	FED. AID PROJECT	

CONTRACT NO. 74127

PROP. CURVE TR116A PI STA. = 66+50.52 Δ = 33° 30' 40" (LT) D = 23° 00' 01" R = 249.11' T = 75.00' L = 145.70' E = 11.05' e = N/C P.C. STA. = 65+75.52 P.T. STA. = 67+21.22	PROP. CURVE TR116B PI STA. = 68+94.08 Δ = 17° 57' 11" (RT) D = 23° 00' 01" R = 249.11' T = 39.35' L = 78.06' E = 3.09' e = N/C P.C. STA. = 68+54.73 P.T. STA. = 69+32.78
--	--

PROP. CURVE C1A
PI STA. = 539+99.97
Δ = 3° 53' 00" (LT)
D = 0° 24' 00"
R = 14,323.90'
T = 485.59'
L = 970.81'
E = 8.23'
e = 1.56%
P.C. STA. = 535+14.38
P.T. STA. = 544+85.19
SE REMOVED STA. 544+00.00 TO STA. 547+00.00

PROP. CURVE C75
PI STA. = 223+92.58
Δ = 31° 32' 36" (RT)
D = 19° 05' 55"
R = 300.00'
T = 84.73'
L = 165.16'
E = 11.74'
e = N/C
P.C. STA. = 223+07.85
P.T. STA. = 224+73.01

PROP. CURVE C98
PI STA. = 52+26.30
Δ = 14° 59' 59" (RT)
D = 9° 52' 43"
R = 580.01'
T = 76.36'
L = 151.84'
E = 5.00'
e = 4.00%
P.C. STA. = 51+49.94
P.T. STA. = 53+01.78
SE ATTAINED STA. 50+20.00 TO STA. 51+90.00
SE REMOVED STA. 52+60.00 TO STA. 54+30.00

EXISTING CURVE C5
P.I. STA. = 53+04.92
Δ = 14° 49' 30" (RT)
D = 4° 48' 35"
R = 1191.22'
T = 154.98'
L = 308.22'
E = 10.04'
e = 1.56%
P.C. STA. = 51+49.94
P.T. STA. = 54+58.16

EXISTING CURVE C4
P.I. STA. = 878+53.19
Δ = 58° 33' 15" (LT)
D = 5° 04' 46"
R = 1127.99'
T = 632.41'
L = 1152.77'
E = 165.18'
e = 7%
P.C. STA. = 872+20.78
P.T. STA. = 883+73.55

PROP. CURVE C8
PI STA. = 63+14.03
Δ = 20° 33' 39" (RT)
D = 23° 00' 01"
R = 249.11'
T = 45.18'
L = 89.39'
E = 4.06'
e = N/C
P.C. STA. = 62+68.85
P.T. STA. = 63+58.24

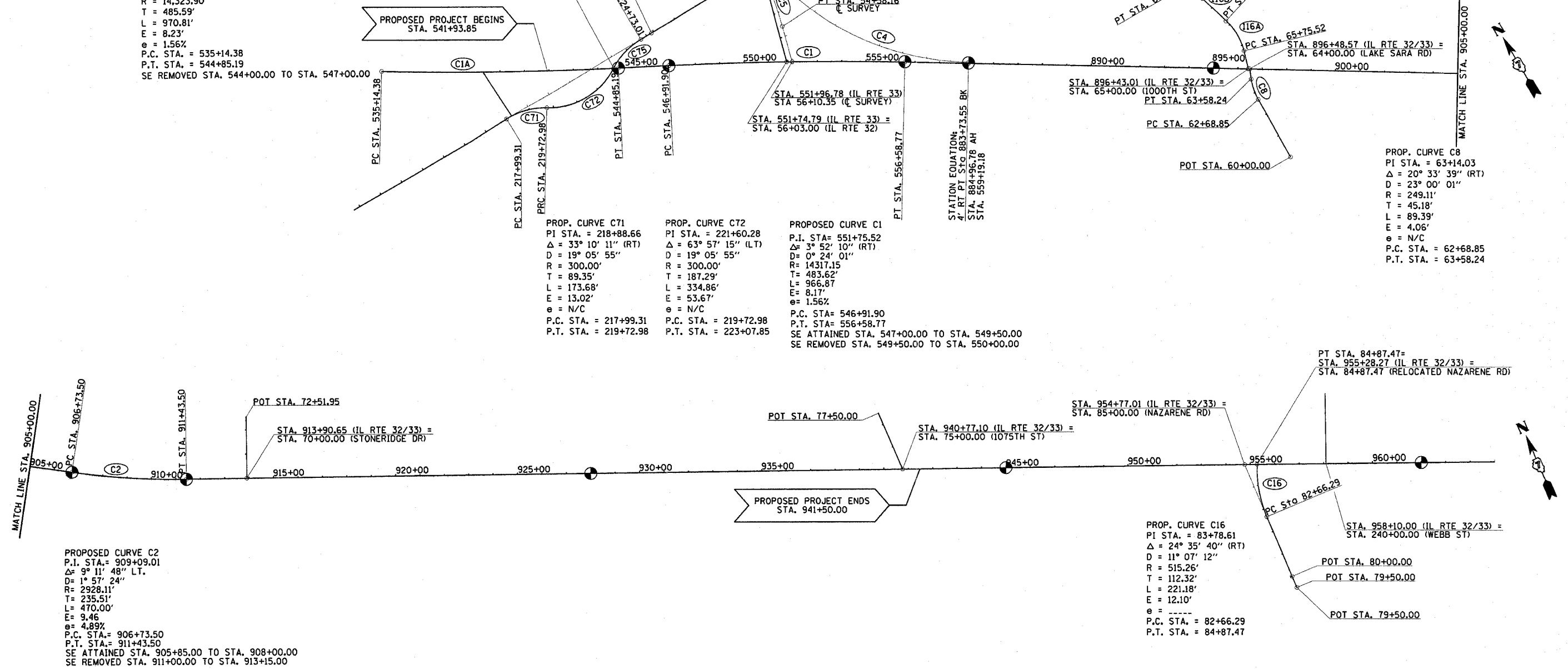
PROP. CURVE C71
PI STA. = 218+88.66
Δ = 33° 10' 11" (RT)
D = 19° 05' 55"
R = 300.00'
T = 89.35'
L = 173.68'
E = 13.02'
e = N/C
P.C. STA. = 217+99.31
P.T. STA. = 219+72.98

PROP. CURVE C72
PI STA. = 221+60.28
Δ = 63° 57' 15" (LT)
D = 19° 05' 55"
R = 300.00'
T = 187.29'
L = 334.86'
E = 53.67'
e = N/C
P.C. STA. = 219+72.98
P.T. STA. = 223+07.85

PROPOSED CURVE C1
P.I. STA. = 551+75.52
Δ = 3° 52' 10" (RT)
D = 0° 24' 01"
R = 14317.15'
T = 483.62'
L = 966.87'
E = 8.17'
e = 1.56%
P.C. STA. = 546+91.90
P.T. STA. = 556+58.77
SE ATTAINED STA. 547+00.00 TO STA. 549+50.00
SE REMOVED STA. 549+50.00 TO STA. 550+00.00

PROP. CURVE C16
PI STA. = 83+78.61
Δ = 24° 35' 40" (RT)
D = 11° 07' 12"
R = 515.26'
T = 112.32'
L = 221.18'
E = 12.10'
e = -----
P.C. STA. = 82+66.29
P.T. STA. = 84+87.47

PROPOSED CURVE C2
P.I. STA. = 909+09.01
Δ = 9° 11' 48" LT.
D = 1° 57' 24"
R = 2928.11'
T = 235.51'
L = 470.00'
E = 9.46'
e = 4.89%
P.C. STA. = 906+73.50
P.T. STA. = 911+43.50
SE ATTAINED STA. 905+85.00 TO STA. 908+00.00
SE REMOVED STA. 911+00.00 TO STA. 913+15.00



LEGEND
 DENOTES PERMANENT SURVEY MARKER PLACED DURING ROADWAY CONSTRUCTION.

REVISIONS	
NAME	DATE

ILLINOIS DEPARTMENT OF TRANSPORTATION
 HORIZONTAL ALIGNMENT PLAN
 SCALE: 1"=200'
 DATE 4/22/02
 DRAWN BY NJV
 CHECKED BY BKB