

F.A.P. RTE.	SECTION	COUNTY	TOTAL SHEETS	SHEET NO.
774	(107, 107Z) LS	EFFINGHAM	22	1
FED. ROAD DIST. NO.		ILLINOIS	FED. AID PROJECT	

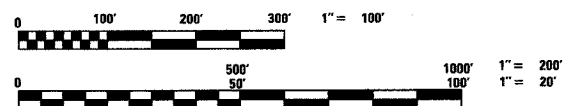
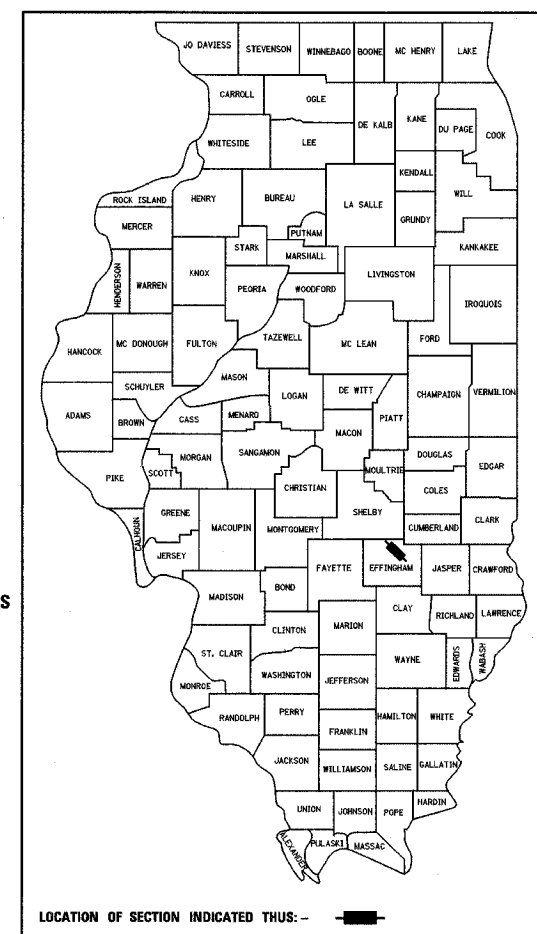
STATE OF ILLINOIS
DEPARTMENT OF TRANSPORTATION
DIVISION OF HIGHWAYS

PLANS FOR PROPOSED FEDERAL HIGHWAY PROJECT

FOR INDEX OF SHEETS, SEE SHEET NO 2
FOR SUMMARY OF QUANTITIES, SEE SHEET NO 3

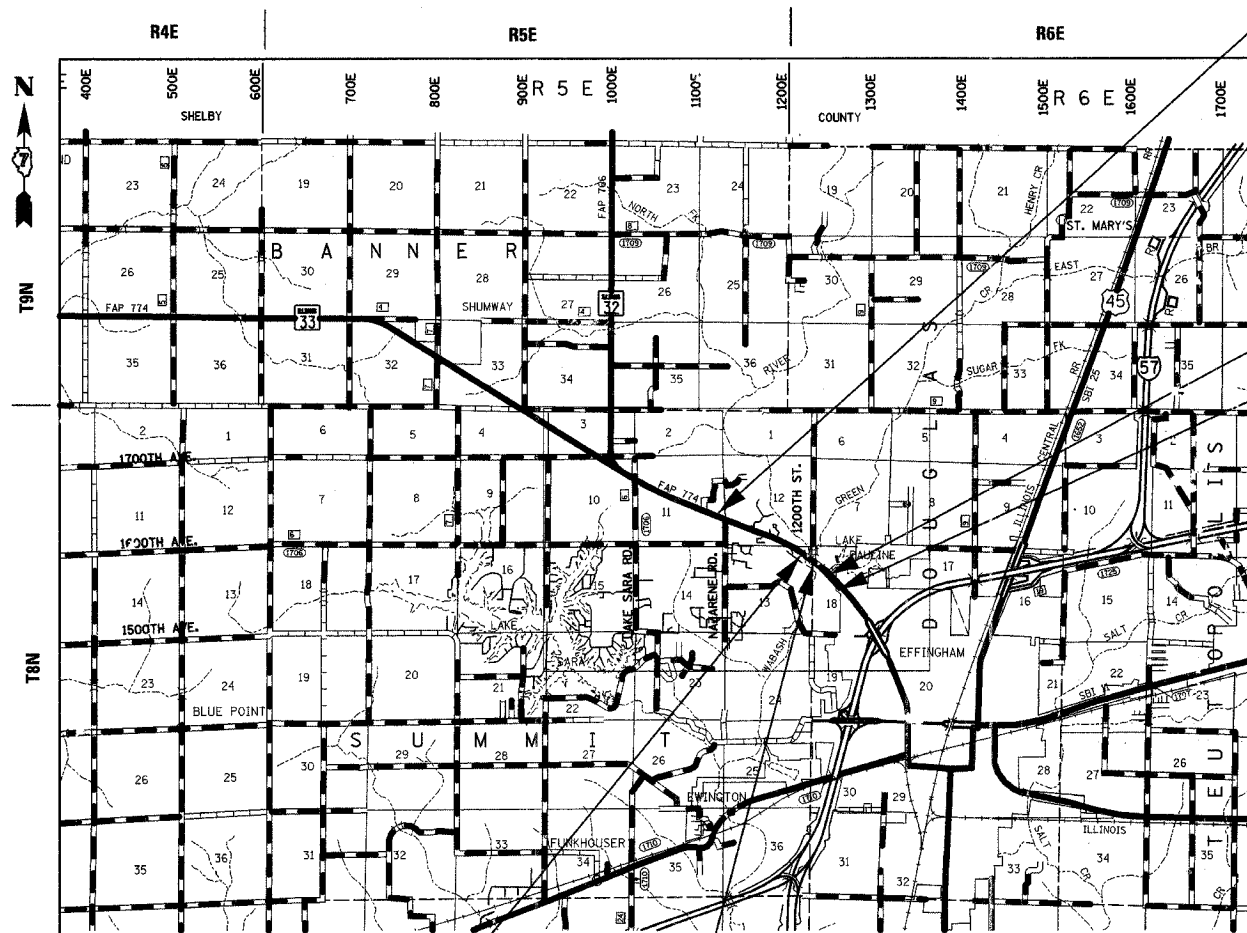
F.A.P. ROUTE 774 (ILLINOIS ROUTE 32/33)
SECTION (107, 107Z) LS
PROJECT: F-0774-(029)
EFFINGHAM COUNTY
C-97-004-06

CONTRACT NO. 74128
D-97-002-06



FULL SIZE PLANS HAVE BEEN PREPARED USING STANDARD ENGINEERING SCALES. REDUCED SIZED PLANS WILL NOT CONFORM TO STANDARD SCALES, IN MAKING MEASUREMENTS ON REDUCED PLANS, THE ABOVE SCALES MAY BE USED.

FOR UNDERGROUND UTILITY LOCATIONS CALL J.U.L.I.E. TOLL FREE 1-800-892-0123 SUMMIT TOWNSHIP DOUGLAS TOWNSHIP



PROPOSED IMPROVEMENT BEGINS STA. 941 + 50.00

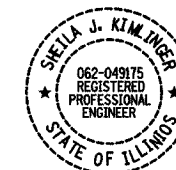
STATION EQUATION STA. 1039 + 00.00 (BK) = STA. 39 + 00.00 (AH)

PROPOSED IMPROVEMENT ENDS STA. 46 + 80.05

STRUCTURE NO. 025-0078
BRIDGE OMISSION
BEGINS STA. 1010 + 18.59
ENDS STA. 1012 + 82.59

STRUCTURE NO. 025-0077
BRIDGE OMISSION
BEGINS STA. 1017 + 74.09
ENDS STA. 1019 + 99.75

LOCATION MAP
GROSS LENGTH OF PROJECT = 10,530 FT. = 1.99 MILES
NET LENGTH OF PROJECT = 9,940 FT. = 1.89 MILES



Sheila J. Kimlinger
SHEILA J. KIMLINGER, P.E.
DATE: 12-7-2006
EXPIRES: 11/30/2007

STATE OF ILLINOIS
DEPARTMENT OF TRANSPORTATION
DIVISION OF HIGHWAYS

SUBMITTED 10-19 2006

Christine M. Reed
DEPUTY DIRECTOR OF HIGHWAYS, REGION ENGINEER

20

ENGINEER OF PROJECT DEVELOPMENT AND IMPLEMENTATION

December 8, 2006
Eric E. Blum
INTERIM ENGINEER OF DESIGN AND ENVIRONMENT

December 8, 2006
Milton R. Sear
DIRECTOR, DIVISION OF HIGHWAYS

FRWA _____ 20 _____
DIVISION ADMINISTRATOR

PRINTED BY AUTHORITY
OF THE STATE OF ILLINOIS

PROJECT ENGINEER: BILL STANLEY
SQUAD LEADER:
TELEPHONE: 217-342-8320

CONTRACT NO. 74128
SUMMIT TOWNSHIP
DOUGLAS TOWNSHIP