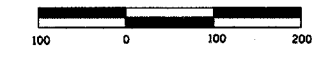


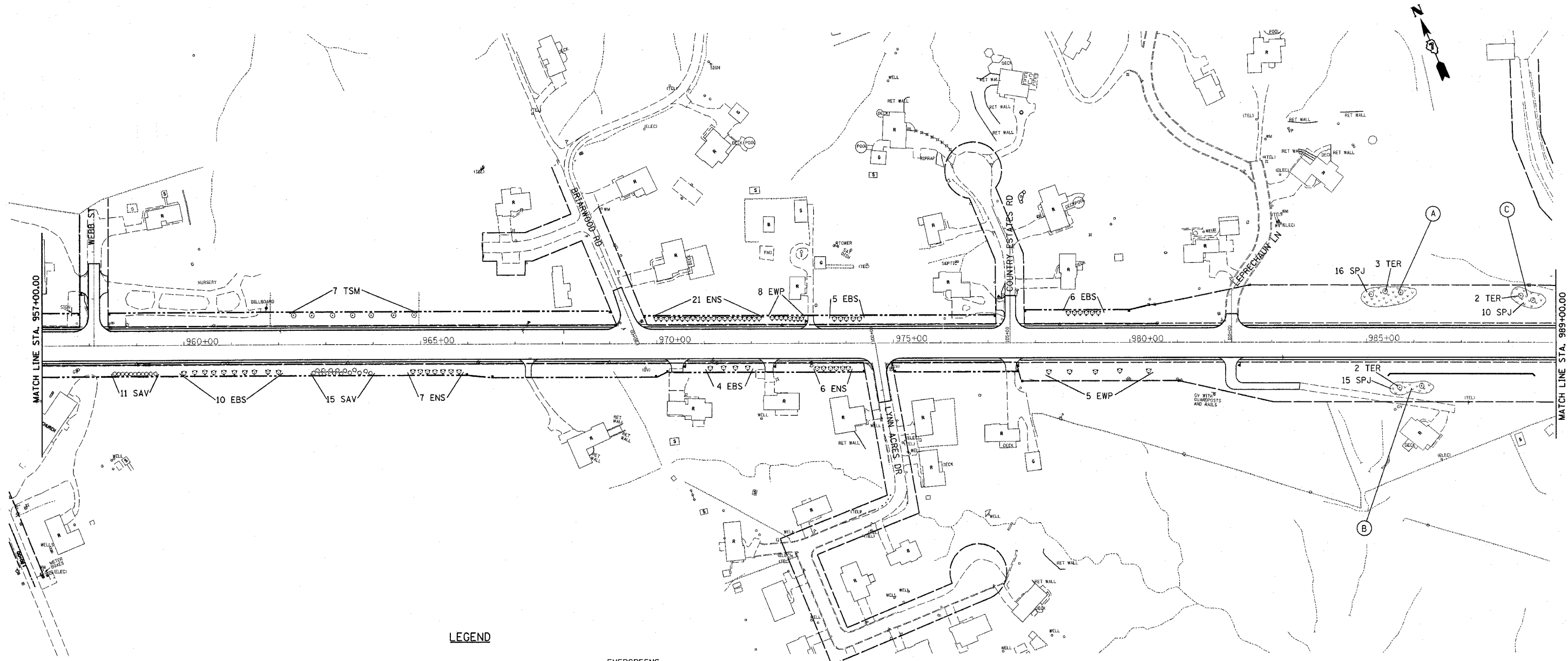
\$USERS  
\$DATE\$  
\*LJN-SPEC\*

FAP NO.	SECTION	COUNTY	TOTAL SHEETS	SHEET NO.
774	*	EFFINGHAM	22	7
FED. ROAD DIST. NO.		ILLINOIS	FED. AID PROJECT NO.	



CONTRACT NO. 74128

• (107, 107Z) LS



**LEGEND**

**TREES**

- TCM - 2" CAL - ACER PLATANOIDES COLUMARE - (COLUMNAR NORWAY MAPLE) A2000716
- TRM - 2" CAL - ACER RUBRUM RED SUNSET - (RED SUNSET RED MAPLE) A2001216
- TSM - 2" CAL - ACER SACCHARUM - (SUGAR MAPLE) A2001716
- TRB - 2.5" CAL - BETULA NIGRA - (RIVER BIRCH) A2002320
- TNC - 2" CAL - CATALPA SPECIOSA - (NORTHERN CATALPA) A2002816
- TSB - 5' CLUMP - AMELANCHIER LAEVIS - (ALLEGHENY SERVICEBERRY) B2000964
- TER - 2" CAL - CERCIC CANADENSIS - (EASTERN REDBUD) B2001116
- TBC - 2" CAL - TAXODIUM DISTICHUM - (COMMON BALD CYPRESS) A2007616

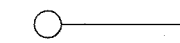
**EVERGREENS**

- ENS - 6' H - PICEA ABIES - (NORWAY SPRUCE) D2001772
- EBS - 6' H - PICEA PUNGENS GLAUCA - (COLORADO BLUE SPRUCE) D2002272
- EWP - 6' H - PINUS STROBUS - (EASTERN WHITE PINE) D2002972

**SHRUBS**

- SRD - 3' H - CORNUS SERICEA - (REDSIER DOGWOOD) C2C01636
- SNF - 3' H - FORSYTHIA NORTHERN SUN - (NORTHERN SUN BORDERFORSYTHIA) C2C03036
- SAV - 2.5' H - VIBERNUM DENTATUM MORTON - (NORTHERN BURGUNDY ARROWWOOD VIBERNUM) C2C11830
- SPJ - 3' W - JUNIPERUS CHINENSIS PFITZER ANA COMPACT - (COMPACT PFITZER JUNIPER) D2000536

DENOTES BED AREA (SEE SHEET # 4)



REVISIONS	
NAME	DATE

ILLINOIS DEPARTMENT OF TRANSPORTATION

**LANDSCAPING PLAN  
SHEET 2 OF 5**

SCALE: 1" = 100'  
DATE

DRAWN BY DIST 7  
CHECKED BY DIST 7