

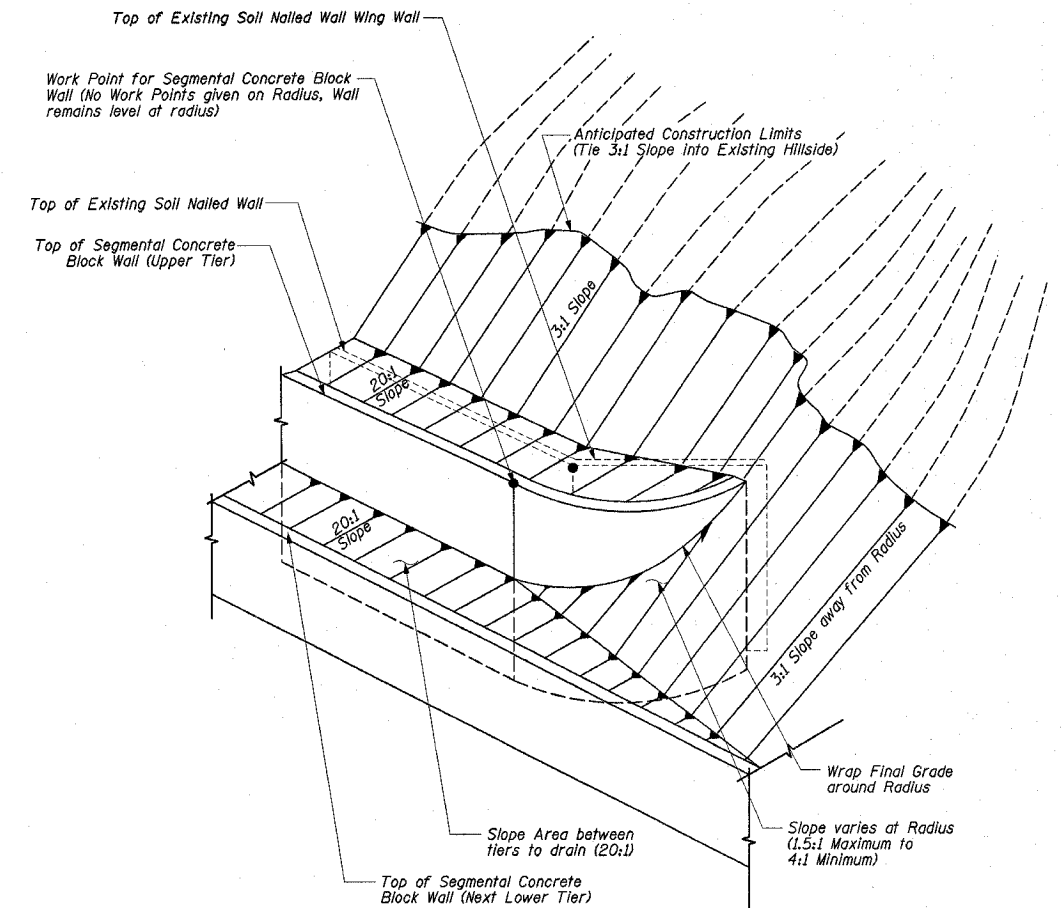
STATE OF ILLINOIS
DEPARTMENT OF TRANSPORTATION

F.A.P. RTE.	SECTION	COUNTY	TOTAL SHEETS	SHEET NO.	SHEET NO. 4 OF 12 SHEETS
774	(107, 1072) LS	EFFINGHAM	22	14	
FED. ROAD DIST. NO.	ILLINOIS FED. AID PROJECT				

CONTRACT NO. 74128

Segmental Concrete Block Wall Work Points				
Tier	Station	Offset	Top of Wall Elevation	Bottom of Wall Elevation
7	1027+75.00	68'-0"	586.20	581.18
7	1028+00.00	68'-0"	587.22	
7	1028+25.00	68'-0"	587.22	583.24
6	1027+20.00	64'	580.17	574.90
6	1027+50.00	64'	582.17	
6	1028+25.00	64'	585.26	
6	1028+50.00	64'	585.29	
6	1029+00.00	64'	586.34	
6	1029+50.00	64'	588.36	
6	1029+60.00	64'	588.36	584.73
5	1026+95.00	60'	573.70	569.91
5	1027+20.00	60'	576.92	
5	1029+75.00	60'	587.35	
5	1029+93.00	60'	587.35	582.05
5	1032+07.00	60'	594.18	589.17
5	1032+50.00	60'	595.24	590.23
5	1032+93.00	60'	596.19	591.16
4	1026+81.00	56'	571.37	565.36
4	1030+00.00	56'	584.34	578.33
4	1030+20.00	56'	584.34	579.13
4	1030+90.00	56'	587.60	581.60
4	1031+00.00	56'	587.96	581.94
4	1031+20.00	56'	588.62	
4	1031+35.00	56'	588.62	583.12
4	1031+67.00	56'		584.06
4	1032+00.00	56'	591.01	585.00
4	1032+50.00	56'	592.24	586.23
4	1033+00.00	56'	593.32	587.31
4	1033+27.00	56'	593.32	587.78
3	1026+50.00	52'	564.11	560.09
3	1026+57.00	52'		
3	1026+81.00	52'	567.37	
3	1030+00.00	52'	580.34	574.33
3	1030+20.00	52'	581.13	
3	1030+29.00	52'	581.13	575.47
3	1030+72.00	52'	583.00	577.01
3	1031+00.00	52'	583.96	577.94
3	1031+35.00	52'	585.12	
3	1031+50.00	52'	584.57	579.56
3	1031+67.00	52'	586.07	
3	1032+00.00	52'	587.01	581.01
3	1032+50.00	52'	588.24	582.23
3	1033+00.00	52'	589.32	583.31
3	1033+27.00	52'	589.79	
3	1033+43.00	52'	589.79	584.07

Segmental Concrete Block Wall Work Points				
Tier	Station	Offset	Top of Wall Elevation	Bottom of Wall Elevation
2	1026+32.00	48'	561.37	555.37
2	1030+00.00	48'	576.34	570.33
2	1030+29.00	48'	577.45	
2	1030+50.00	48'	577.21	572.20
2	1030+72.00	48'	579.00	
2	1031+00.00	48'	579.96	573.95
2	1031+50.00	48'	581.57	575.56
2	1032+00.00	48'	583.01	577.00
2	1032+50.00	48'	584.24	578.23
2	1033+00.00	48'	585.32	579.31
2	1033+43.00	48'	586.08	
2	1033+50.00	48'	586.08	580.19
2	1033+68.00	48'	586.08	580.63
1	1026+10.00	44'	555.17	550.49
1	1026+32.00	44'	557.37	
1	1030+00.00	44'	572.34	566.34
1	1030+50.00	44'	574.21	568.21
1	1031+00.00	44'	575.96	569.96
1	1031+50.00	44'	577.57	571.57
1	1032+00.00	44'	579.01	573.01
1	1032+50.00	44'	580.24	574.24
1	1033+00.00	44'	581.32	575.32
1	1033+50.00	44'	582.20	576.20
1	1033+68.00	44'	582.65	
1	1033+81.00	44'	582.65	576.98



WORK POINT AND FINAL GRADING DETAIL

WALL ELEVATIONS
ILLINOIS ROUTE 32/33
F.A.P. ROUTE 774
EFFINGHAM COUNTY
RETAINING WALL
STA. 1026+03.00 LT. TO STA. 1033+86.00 LT.
STRUCTURE NUMBER 025-W008