

F.A.P. RTE.	SECTION	COUNTY	TOTAL SHEETS	SHEET NO.
774	(107, 107Z) LS	EFFINGHAM	22	1
FED. ROAD DIST. NO.		ILLINOIS FED. AID PROJECT		

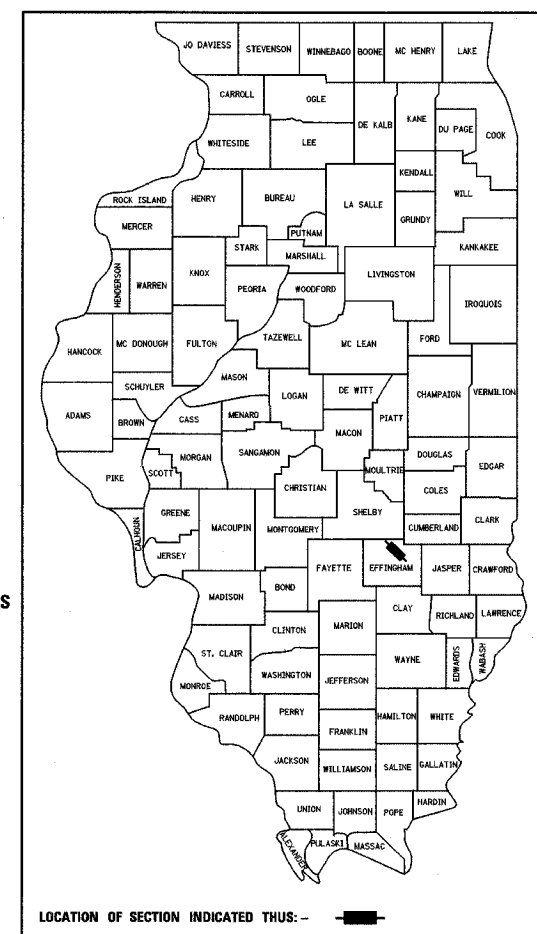
STATE OF ILLINOIS
DEPARTMENT OF TRANSPORTATION
DIVISION OF HIGHWAYS

PLANS FOR PROPOSED FEDERAL HIGHWAY PROJECT

FOR INDEX OF SHEETS, SEE SHEET NO 2
FOR SUMMARY OF QUANTITIES, SEE SHEET NO 3

F.A.P. ROUTE 774 (ILLINOIS ROUTE 32/33)
SECTION (107, 107Z) LS
PROJECT: F-0774-(029)
EFFINGHAM COUNTY
C-97-004-06

CONTRACT NO. 74128
D-97-002-06



STATE OF ILLINOIS
DEPARTMENT OF TRANSPORTATION
DIVISION OF HIGHWAYS

SUBMITTED 10-19 2006

Christine M. Reed
DEPUTY DIRECTOR OF HIGHWAYS, REGION ENGINEER

20

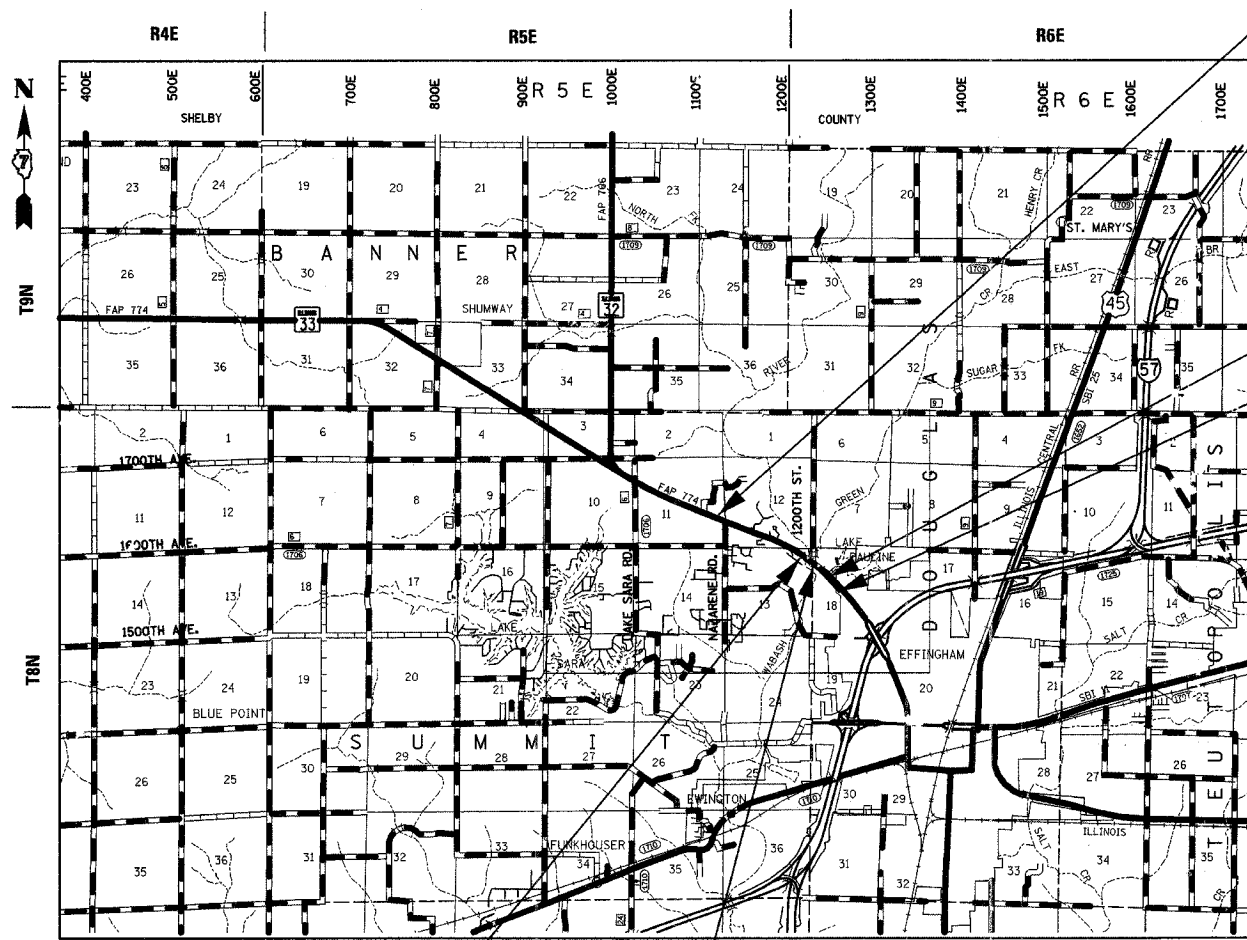
ENGINEER OF PROJECT DEVELOPMENT AND IMPLEMENTATION

December 8, 2006
Eric E. Blum
INTERIM ENGINEER OF DESIGN AND ENVIRONMENT

December 8, 2006
Milton R. Sees, P.E.
DIRECTOR, DIVISION OF HIGHWAYS

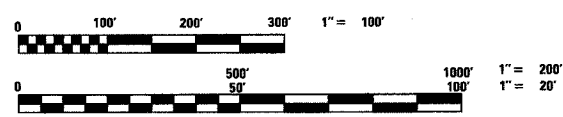
FRWA _____ 20 _____
DIVISION ADMINISTRATOR

**PRINTED BY AUTHORITY
OF THE STATE OF ILLINOIS**



LOCATION MAP

GROSS LENGTH OF PROJECT = 10,530 FT. = 1.99 MILES
NET LENGTH OF PROJECT = 9,940 FT. = 1.89 MILES



FULL SIZE PLANS HAVE BEEN PREPARED USING STANDARD ENGINEERING SCALES. REDUCED SIZED PLANS WILL NOT CONFORM TO STANDARD SCALES, IN MAKING MEASUREMENTS ON REDUCED PLANS, THE ABOVE SCALES MAY BE USED.

FOR UNDERGROUND UTILITY LOCATIONS CALL J.U.L.I.E. TOLL FREE 1-800-892-0123 SUMMIT TOWNSHIP DOUGLAS TOWNSHIP



Sheila J. Kimlinger
SHEILA J. KIMLINGER, P.E.
DATE: 12-7-2006
EXPIRES: 11/30/2007

PROJECT ENGINEER: BILL STANLEY
SQUAD LEADER:
TELEPHONE: 217-342-8320

CONTRACT NO. 74128
SUMMIT TOWNSHIP
DOUGLAS TOWNSHIP

F.A.P. RTE.	SECTION	COUNTY	TOTAL SHEETS	SHEET NO.
774	(107, 107Z) LS	EFFINGHAM	22	2
FED. ROAD DIST. NO.	ILLINOIS	FED. AID PROJECT		

CONTRACT NO. 74128

GENERAL NOTES

- THIS SECTION SHALL BE CONSTRUCTED IN ACCORDANCE WITH THE PLANS, THE "STANDARD SPECIFICATIONS FOR ROAD AND BRIDGE CONSTRUCTION", ADOPTED JANUARY 1, 2007, THE "SUPPLEMENTAL SPECIFICATIONS AND RECURRING SPECIAL PROVISIONS" INDICATED ON THE CHECK SHEET, AND "THE SPECIAL PROVISIONS" INCLUDED IN THE PROPOSAL.
- THE WORK INCLUDED IN THIS SECTION CONSISTS OF LANDSCAPING APPROXIMATELY 1.98 MILES OF F.A.P. ROUTE 774 (IL RTE 32/33), INCLUDING CONSTRUCTING A SEGMENTAL CONCRETE BLOCK TIERED RETAINING WALL.
- THE PROPOSED PROJECT BEGINS WEST OF THE INTERSECTION OF NAZARENE ROAD AND IL ROUTE 32/33 AT STA. 941+50.00 AND EXTENDS IN AN EASTERLY DIRECTION A DISTANCE OF 1.99 MILES TO STA. 46+80.05 EAST OF FORD AVE IN EFFINGHAM, IL. STATION EQUATION: STA. 1039+00.00 = STATION 39+00.00
- LOCATIONS OF UTILITIES HAVE NOT BEEN SHOWN ON THE PLANS. THE CONTRACTOR SHALL BE RESPONSIBLE FOR VERIFYING LOCATIONS OF UNDERGROUND UTILITIES WITH J.U.L.I.E. FIELD MARKINGS OF UTILITIES IN WORK AREAS MAY BE OBTAINED BY PROVIDING A MINIMUM OF 96 HOURS ADVANCE NOTICE THROUGH THE J.U.L.I.E. SYSTEM BY CALLING 800-892-0123.

AGENCIES WITH UTILITIES WITHIN THE PROJECT LIMITS:	
ILLINOIS CONSOLIDATED TELEPHONE CO.	TELEPHONE
VERIZON NORTH INC.	TELEPHONE
AMEREN CIPS	GAS
NORRIS ELECTRIC COOPERATIVE	ELECTRICITY
AMEREN CIPS	ELECTRICITY
EJ WATER CORPORATION	WATER
LAKE SARA AREA WATER COOPERATIVE, INC.	WATER
CITY OF EFFINGHAM	WATER
CITY OF EFFINGHAM	SEWER
AT&T MEDIA SERVICE	T.V. CABLE
- ALL AREAS DISTURBED BY LANDSCAPE ACTIVITIES WITHIN THE RIGHT-OF-WAY SHALL BE RESHAPED AND RESEEDED. SEEDING SHALL BE CLASS 2 IN ACCORDANCE WITH SECTION 250 OF THE STANDARD SPECIFICATIONS. THE COST OF RESHAPING AND RESEEDING SHALL BE INCLUDED IN THE UNIT PRICE OF THE VARIOUS ITEMS OF WORK AND SHALL NOT BE PAID FOR SEPARATELY.
- ALL TREE AND SHRUB PLANTING SHALL CONFORM TO SECTION 253 OF THE STANDARD SPECIFICATIONS.
- ALL CIRCLED AREAS ARE BEDS AND SHALL BE FREE OF WEEDS PRIOR TO PLANTING. ALL BEDS ARE DESIGNATED WITH A CIRCLED ALPHABETICAL LETTER AND THE APPROXIMATE BED AREAS ARE GIVEN ON SHEET # 4.
- ALL SHRUB BEDS SHALL BE SPRAYED WITH GLYPHOSATE 10 DAYS PRIOR TO PLANTING.
- ALL BEDS AND TREES SHALL BE WOOD CHIPPED IN ACCORDANCE WITH SECTION 253 TO A MINIMUM DEPTH OF 3".
- AN APPLICATION OF RONSTAR GRANULAR PRE-EMERGENT HERBICIDE (OR EQUAL) SHALL BE APPLIED AS PER MANUFACTURER'S RECOMMENDATION PRIOR TO WOOD CHIPPING OF ALL BEDS AND TREES.
- ALL TREES, SHRUBS, PLANTS AND BED LOCATIONS SHALL BE AS APPROVED AND AS DIRECTED BY THE ROADSIDE MAINTENANCE TECHNICIAN, TOM WILSON 217-342-8270.
- THIS PROJECT SHALL BE COORDINATED WITH CONSTRUCTION OF THE ROADWAY PROJECT IN THE SAME AREA. THE CONTRACTOR SHALL NOT START THIS PROJECT WITHOUT THE APPROVAL OF THE DISTRICT 7 PROJECT IMPLEMENTATION ENGINEER.

INDEX OF SHEETS

SHEET NO.	ITEM
1	COVER SHEET
2	GENERAL NOTES, INDEX & STANDARDS
3	SUMMARY OF QUANTITIES
4	LANDSCAPING SCHEDULE OF QUANTITIES
5	HORIZONTAL ALIGNMENT PLAN
6-10	LANDSCAPING PLANS
11-22	SEGMENTAL BLOCK RETAINING WALL PLANS

HIGHWAY STANDARDS

THE FOLLOWING STANDARDS ARE A PART OF THESE PLANS AND ARE INCLUDED AFTER SHEET NUMBER: 22

STANDARD NO.	DESCRIPTION
701001-01	OFF ROAD OPERATIONS, 2L, 2W, MORE THAN 4.5 m (15') AWAY
701006-02	OFF ROAD OPERATIONS 2L, 2W, 4.5 m (15') TO 600 mm (24") FROM PAVEMENT EDGE
701101-01	OFF ROAD OPERATIONS, MULTILANE, 4.5 m (15') TO 600 mm (24") FROM PAVEMENT EDGE
701106-01	OFF ROAD OPERATIONS, MULTILANE, MORE THAN 4.5 m (15') AWAY
701602-02	URBAN LANE CLOSURE, MULTILANE, 2W WITH BIDIRECTIONAL LEFT TURN LANE
702001-06	TRAFFIC CONTROL DEVICES
000001-04	ABBREVIATIONS, SYMBOLS & PATTERNS

REVISIONS		ILLINOIS DEPARTMENT OF TRANSPORTATION
NAME	DATE	
		GENERAL NOTES, INDEX OF SHEETS AND STANDARDS
DATE 4/05		DRAWN BY MLO CHECKED BY SJK

F.A.P. RTE.	SECTION	COUNTY	TOTAL SHEETS	SHEET NO.
774	(107, 1072) LS	EFFINGHAM	22	3
FED. ROAD DIST. NO.	ILLINOIS	FED. AID PROJECT		

CONTRACT NO. 74128

80% FED./20% STATE

SUMMARY OF QUANTITIES					CONSTRUCTION TYPE CODE	
					Y003	
PAY CODE NUMBER	ITEM	UNIT	TOTAL QUANTITY	RURAL	URBAN	
* 48300100	PORTLAND CEMENT CONCRETE SHOULDERS, 6"	SQ YD	174		174	
* 60100905	PIPE DRAINS, 4"	FOOT	3832		3832	
67000500	ENGINEERS FIELD OFFICE, TYPE B	CAL MO	5		5	
67100100	MOBILIZATION	L SUM	1	.7	.3	
70102632	TRAFFIC CONTROL AND PROTECTION STANDARD 701602	L SUM	1		1	
A2000716	TREE, ACER PLANTANOIDES COLUMARE (COLUMNAR NORWAY MAPLE), 2" CALIPER, BALLED AND BURLAPPED	EACH	4	4		
A2001016	TREE, ACER REBRUM (RED MAPLE), 2" CALIPER, BALLED AND BURLAPPED	EACH	14		14	
A2001216	TREE, ACER RUBRUM RED SUNSET (RED SUNSET RED MAPLE), 2" CALIPER, BALLED AND BURLAPPED	EACH	2		2	
A2001716	TREE, ACER SACCHARUM (SUGAR MAPLE), 2" CALIPER, BALLED AND BURLAPPED	EACH	8	6	2	
A2002320	TREE, BETULA NIGRA (RIVER BIRCH), 2-1/2" CALIPER, BALLED AND BURLAPPED	EACH	30	30		
A2002816	TREE, CATALPA SPECIOSA (NORTHERN CATALPA), 2" CALIPER, BALLED AND BURLAPPED	EACH	28	28		
A2002916	TREE, CELTIS OCCIDENTALIS (COMMON HACKBERRY), 2" CALIPER, BALLED AND BURLAPPED	EACH	13		13	
A2007616	TREE, TAXODIUM DISTICHUM (COMMON BALD CYPRESS), 2" CALIPER, BALLED AND BURLAPPED	EACH	26	24	2	
B2000366	TREE, ACER GINNALA FLAME (FLAME AMUR MAPLE) 6' HEIGHT, SHRUB FORM, BALLED AND BURLAPPED	EACH	40		40	
B2000964	TREE, AMELANCHIER LAEVIS (ALLEGHENY SERVICE BERRY), 5' HEIGHT, CLUMP FORM, BALLED AND BURLAPPED	EACH	27	27		
B2001116	TREE, CERCIC CANADENSIS (EASTERN REDBUD), 2" CALIPER, TREE FORM, BALLED AND BURLAPPED	EACH	29	22	7	

80% FED./20% STATE

SUMMARY OF QUANTITIES					CONSTRUCTION TYPE CODE	
					Y003	
PAY CODE NUMBER	ITEM	UNIT	TOTAL QUANTITY	RURAL	URBAN	
C2C01636	SHRUB, CORNUS SERICEA (REDSIER DOGWOOD), 3' HEIGHT, CONTAINER	EACH	45	45		
C2C03036	SHRUB, FORSYTHIA NORTHERN SUN (NORHTERN SUN BORDER FORSYTHIA), 3' HEIGHT, CONTAINER	EACH	25	25		
C2C11830	SHRUB, VIBERNUM DENTATUM MORTON (NORTHERN BURGUNDY ARROWWOOD VIBERNUM), 2-1/2" HEIGHT, CONTAINER	EACH	61	61		
C2007218	SHRUB, ROSA KNOCKOUT (KNOCKOUT ROSE), 18" HEIGHT, CONTAINER	EACH	187		187	
D2000536	EVERGREEN, JUNIPERUS CHINENSIS PFITZER ANA COMPACT (COMPACT PFITZER JUNIPER), 3' WIDTH, BALLED AND BURLAPPED	EACH	71	71		
D2001772	EVERGREEN, PICEA ABIES (NORWAY SPRUCE), 6' HEIGHT, BALLED AND BURLAPPED	EACH	49	49		
D2002272	EVERGREEN, PICEA PUNGENS GLAUCA (COLORADO BLUE SPRUCE), 6' HEIGHT, BALLED AND BURLAPPED	EACH	41	41		
D2002972	EVERGREEN, PINUS STROBUS (EASTERN WHITE PINE), 6' HEIGHT, BALLED AND BURLAPPED	EACH	13	13		
K0039125	HERMEROCALLIS 'HAPPY RETURNS' CONTAINER GROWN (1 GALLON)	UNIT	496		496	
XX001882	HEMEROCALLIS 'STELLA D'ORN' (PERENNIAL DAYLILLY)	UNIT	496		496	
XX001884	RUDBECKIA FULGIDA 'GOLDSTRUM' (PERENNIAL BLACK EYED SUSAN)	UNIT	331		331	
XX003196	CALAMAGROSTIS ACUTIFLORA 'KARL FOERSTER' 1 GAL	EACH	231		231	
XX004490	ECHINACEA PURPUREA 'MAGNUS', 1 GALLON	EACH	331		331	
X0322831	GALLARADIA X GRANDIFLORA 'GOBLIN' CONTAINER GROWN (2 QUART)	EACH	331		331	
X0322923	SEGMENTAL CONCRETE BLOCK WALL	SQ FT	20815		20815	

NOTE:

RURAL STA. 941+50.00 TO STA. 1016+00.00
 URBAN STA. 1016+00.00 TO STA. 46+80.05
 * DENOTES SPECIALTY ITEM

REVISIONS		ILLINOIS DEPARTMENT OF TRANSPORTATION
NAME	DATE	
		SUMMARY OF QUANTITIES

DRAWN BY MLO
CHECKED BY SJK

DATE 4/05

CONTRACT NO. 74128

LANDSCAPING SCHEDULE

KEY	NAME	UNIT	QUANTITY SHEET 1 OF 5 STA. 941+50 TO STA. 957+00	QUANTITY SHEET 2 OF 5 STA. 957+00 TO STA. 989+00	QUANTITY SHEET 3 OF 5 STA. 989+00 TO STA. 1018+00	QUANTITY SHEET 4 OF 5 STA. 1018+00 TO STA. 46+80	QUANTITY SHEET 5 OF 5 RETAINING WALL	TOTAL QUANTITY
TCM	TREE, ACER PLANTANOIDES COLUMARE (COLUMNAR NORWAY MAPLE), 2" CALIPER, BALLED AND BURLAPPED	EACH	4					4
TRM	TREE, ACER RUBRUM RED SUNSET (RED SUNSET RED MAPLE), 2" CALIPER, BALLED AND BURLAPPED	EACH				2		2
TSM	TREE, ACER SACCHARUM (SUGAR MAPLE), 2" CALIPER, BALLED AND BURLAPPED	EACH		7		1		8
TRB	TREE, BETULA NIGRA (RIVER BIRCH), 2-1/2" CALIPER, BALLED AND BURLAPPED	EACH			30			30
TNC	TREE, CATALPA SPECIOSA (NORTHERN CATALPA), 2" CALIPER, BALLED AND BURLAPPED	EACH			28			28
TSB	TREE, AMELANCHIER LAEVIS (ALLEGHENY SERVICEBERRY), 5' HEIGHT, CLUMP FORM, BALLED AND BURLAPPED	EACH	15		12			27
TER	TREE, CERCIC CANADENSIS (EASTER REDBUD), 2" CALIPER, TREE FORM, BALLED AND BURLAPPED	EACH		7	15	7		29
TBC	TREE, TAXODIUM DISTICHUM (COMMON BALD CYPRESS), 2" CALIPER, BALLED AND BURLAPPED	EACH			26			26
ENS	EVERGREEN, PICEA ABIES (NORWAY SPRUCE), 6' HEIGHT, BALLED AND BURLAPPED	EACH	15	34				49
EBS	EVERGREEN, PICEA PUNGENS GLAUCA (COLORADO BLUE SPRUCE), 6' HEIGHT, BALLED AND BURLAPPED	EACH	16	25				41
EWP	EVERGREEN, PINUS STROBUS (EASTERN WHITE PINE), 6' HEIGHT, BALLED AND BURLAPPED	EACH		13				13
SRD	SHRUB, CORNUS SERICEA (REDSIER DOGWOOD), 3' HEIGHT, CONTAINER	EACH	45					45
SNF	SHRUB, FORSYTHIA NORTHERN SUN (NORTHERN SUN BORDER FORSYTHIA), 3' HEIGHT, CONTAINER	EACH	25					25
SAV	SHRUB, VIBERNUM DENTATUM MORTON (NORTHERN BURGUNDY ARROWWOOD VIBERNUM), 2-1/2' HEIGHT, CONTAINER	EACH	35	26				61
SPJ	EVERGREEN, JUNIPERUS CHINENSIS PFITZER ANA COMPACT (COMPACT PFITZER JUNIPER), 3' WIDTH, BALLED AND BURLAPPED	EACH		41	30			71
⊙	CALAMAGROSTIS ACUTIFLORA, 'KARL FOERSTER', 1 GAL	EACH					231	231
⊙	SHRUB, ROSA KNOCKOUT (KNOCKOUT ROSE), 18" HEIGHT, CONTAINER	EACH					187	187
H1	HEMEROCALLIS 'STELLA D'ORO' (PERENNIAL DAYLILY)	UNIT					496	496
H2	HEMEROCALLIS 'HAPPY RETURNS' CONTAINER GROWN (1 GALLON)	UNIT					496	496
RF	RUDBECKIA FULGIDA 'GOLDSTRUM' (PERENNIAL BLACK EYED SUSAN)	UNIT					331	331
G	GAILLARDIA X GRANDIFLORA 'GOBLIN' - CONTAINER GROWN (2 QUART)	EACH					331	331
E	ECHINACEA PURPUREA 'MAGNUS', 1 GALLON	EACH					331	331
⊕	TREE, CELTIS OCCIDENTALIS (COMMON HACKBERRY), 2" CALIPER, BALLED AND BURLAPPED	EACH					13	13
⊖	TREE, ACER REBRUM (RED MAPLE), 2" CALIPER, BALLED AND BURLAPPED	EACH					14	14
⊙	TREE, ACER GINNALA FLAME (FLAME AMUR MAPLE) 6' HEIGHT, SHRUB FORM, BALLED AND BURLAPPED	EACH					40	40

APPROXIMATE BED AREAS - FOR INFORMATION ONLY

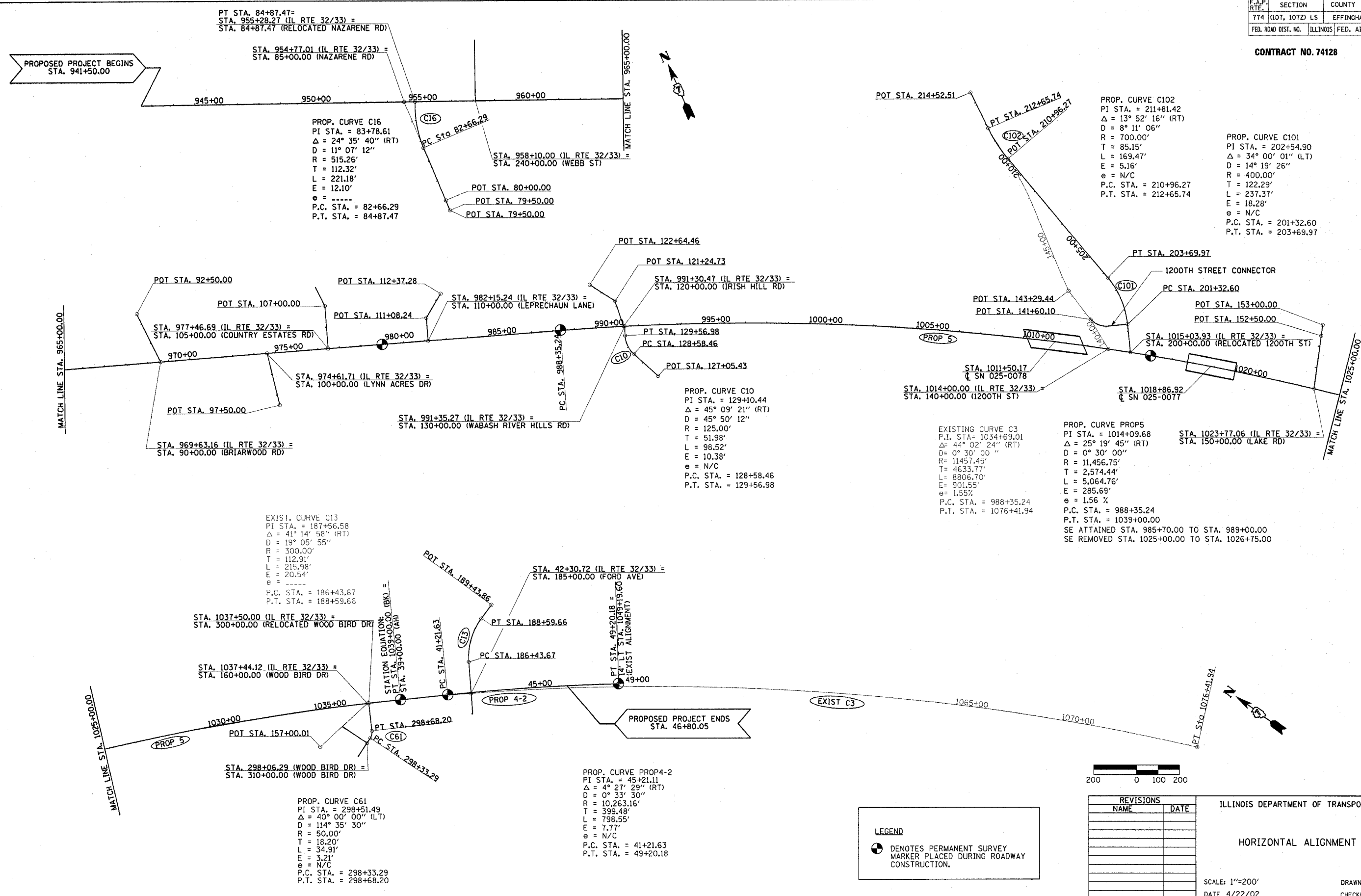
- Ⓐ - 3,731 S.F.
- Ⓑ - 1,962 S.F.
- Ⓒ - 2,112 S.F.
- Ⓓ - 2,807 S.F.

REVISIONS		ILLINOIS DEPARTMENT OF TRANSPORTATION
NAME	DATE	
		LANDSCAPING SCHEDULE OF QUANTITIES

DRAWN BY: MLO
CHECKED BY: SJK
DATE: 4/05

F.A.P. RTE.	SECTION	COUNTY	TOTAL SHEETS	SHEET NO.
774	(107, 107Z) LS	EFFINGHAM	22	5
FED. ROAD DIST. NO.		ILLINOIS	FED. AID PROJECT	

CONTRACT NO. 74128



PT STA. 84+87.47 =
 STA. 955+28.27 (IL RTE 32/33) =
 STA. 84+87.47 (RELOCATED NAZARENE RD)

STA. 954+77.01 (IL RTE 32/33) =
 STA. 85+00.00 (NAZARENE RD)

PROP. CURVE C16
 PI STA. = 83+78.61
 $\Delta = 24^\circ 35' 40''$ (RT)
 $D = 11^\circ 07' 12''$
 $R = 515.26'$
 $T = 112.32'$
 $L = 221.18'$
 $E = 12.10'$
 $e =$
 P.C. STA. = 82+66.29
 P.T. STA. = 84+87.47

PROP. CURVE C102
 PI STA. = 211+81.42
 $\Delta = 13^\circ 52' 16''$ (RT)
 $D = 8^\circ 11' 06''$
 $R = 700.00'$
 $T = 85.15'$
 $L = 169.47'$
 $E = 5.16'$
 $e =$
 P.C. STA. = 210+96.27
 P.T. STA. = 212+65.74

PROP. CURVE C101
 PI STA. = 202+54.90
 $\Delta = 34^\circ 00' 01''$ (LT)
 $D = 14^\circ 19' 26''$
 $R = 400.00'$
 $T = 122.29'$
 $L = 237.37'$
 $E = 18.28'$
 $e =$
 P.C. STA. = 201+32.60
 P.T. STA. = 203+69.97

PROP. CURVE C10
 PI STA. = 129+10.44
 $\Delta = 45^\circ 09' 21''$ (RT)
 $D = 45^\circ 50' 12''$
 $R = 125.00'$
 $T = 51.98'$
 $L = 98.52'$
 $E = 10.38'$
 $e =$
 P.C. STA. = 128+58.46
 P.T. STA. = 129+56.98

EXISTING CURVE C3
 P.I. STA. = 1034+69.01
 $\Delta = 44^\circ 02' 24''$ (RT)
 $D = 0^\circ 30' 00''$
 $R = 11457.45'$
 $T = 4633.77'$
 $L = 8806.70'$
 $E = 901.55'$
 $e = 1.55\%$
 P.C. STA. = 988+35.24
 P.T. STA. = 1076+41.94

PROP. CURVE PROPS
 PI STA. = 1014+09.68
 $\Delta = 25^\circ 19' 45''$ (RT)
 $D = 0^\circ 30' 00''$
 $R = 11,456.75'$
 $T = 2,574.44'$
 $L = 5,064.76'$
 $E = 285.69'$
 $e = 1.56\%$
 P.C. STA. = 988+35.24
 P.T. STA. = 1039+00.00

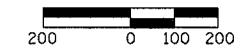
STA. 1023+77.06 (IL RTE 32/33) =
 STA. 150+00.00 (LAKE RD)

SE ATTAINED STA. 985+70.00 TO STA. 989+00.00
 SE REMOVED STA. 1025+00.00 TO STA. 1026+75.00

EXIST. CURVE C13
 PI STA. = 187+56.58
 $\Delta = 41^\circ 14' 58''$ (RT)
 $D = 19^\circ 05' 55''$
 $R = 300.00'$
 $T = 112.91'$
 $L = 215.98'$
 $E = 20.54'$
 $e =$
 P.C. STA. = 186+43.67
 P.T. STA. = 188+59.66

PROP. CURVE PROP4-2
 PI STA. = 45+21.11
 $\Delta = 4^\circ 27' 29''$ (RT)
 $D = 0^\circ 33' 30''$
 $R = 10,263.16'$
 $T = 399.48'$
 $L = 798.55'$
 $E = 7.77'$
 $e =$
 P.C. STA. = 41+21.63
 P.T. STA. = 49+20.18

PROP. CURVE C61
 PI STA. = 298+51.49
 $\Delta = 40^\circ 00' 00''$ (LT)
 $D = 114^\circ 35' 30''$
 $R = 50.00'$
 $T = 18.20'$
 $L = 34.91'$
 $E = 3.21'$
 $e =$
 P.C. STA. = 298+33.29
 P.T. STA. = 298+68.20



LEGEND

● DENOTES PERMANENT SURVEY MARKER PLACED DURING ROADWAY CONSTRUCTION.

REVISIONS	
NAME	DATE

ILLINOIS DEPARTMENT OF TRANSPORTATION

HORIZONTAL ALIGNMENT PLAN

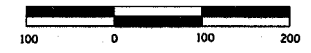
SCALE: 1"=200'

DATE 4/22/02

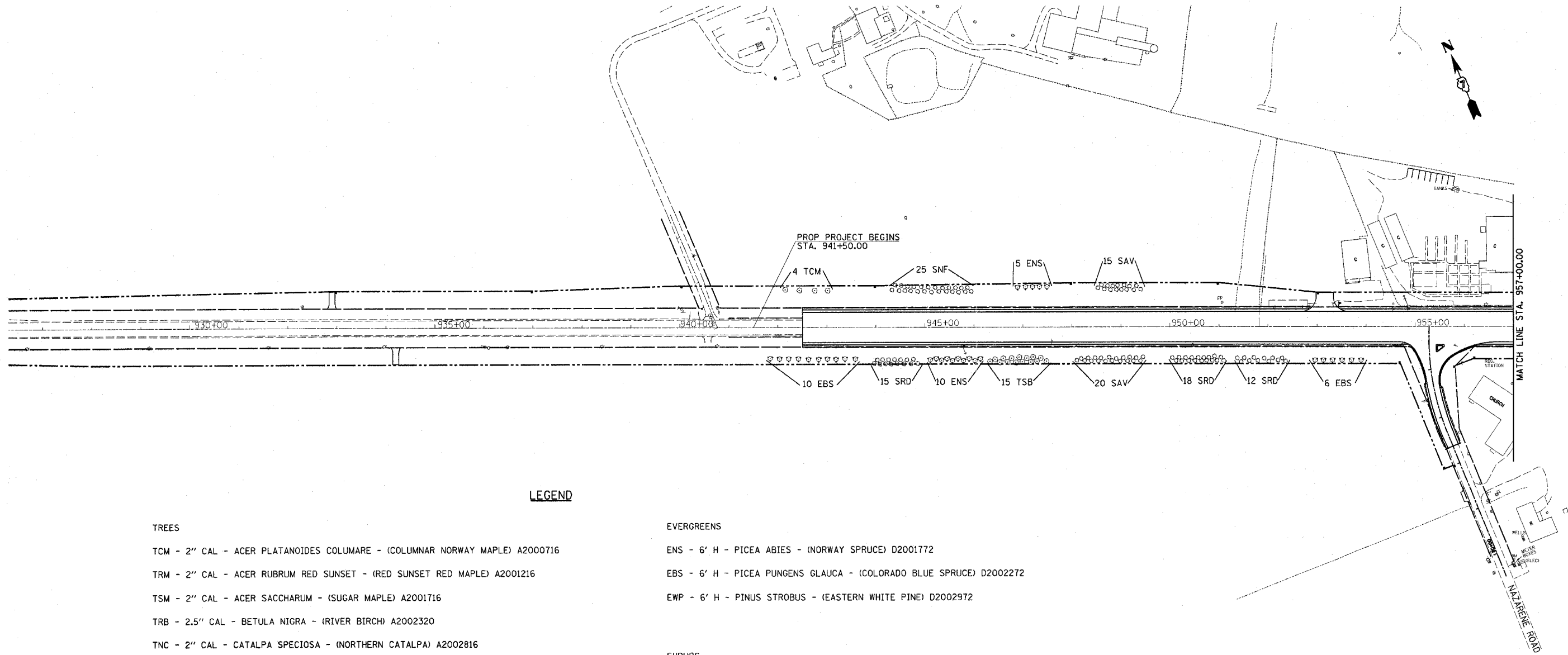
DRAWN BY MLO
 CHECKED BY BKB

FAP #	SECTION	COUNTY	TOTAL SHEETS	SHEET NO.
774	*	EFFINGHAM	22	6
FED. ROAD DIST. NO.		ILLINOIS	FED. AID PROJECT NO.	

CONTRACT NO. 74128
 • (107, 107Z) LS



\$USER\$
 \$DATE\$
 LJN-SPEC

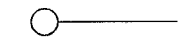


LEGEND

TREES

- TCM - 2" CAL - ACER PLATANOIDES COLUMARE - (COLUMNAR NORWAY MAPLE) A2000716
- TRM - 2" CAL - ACER RUBRUM RED SUNSET - (RED SUNSET RED MAPLE) A2001216
- TSM - 2" CAL - ACER SACCHARUM - (SUGAR MAPLE) A2001716
- TRB - 2.5" CAL - BETULA NIGRA - (RIVER BIRCH) A2002320
- TNC - 2" CAL - CATALPA SPECIOSA - (NORTHERN CATALPA) A2002816
- TSB - 5' CLUMP - AMELANCHIER LAEVIS - (ALLEGHENY SERVICEBERRY) B2000964
- TER - 2" CAL - CERCIC CANADENSIS - (EASTERN REDBUD) B2001116
- TBC - 2" CAL - TAXODIUM DISTICHUM - (COMMON BALD CYPRESS) A2007616

DENOTES BED AREA (SEE SHEET * 4)



EVERGREENS

- ENS - 6' H - PICEA ABIES - (NORWAY SPRUCE) D2001772
- EBS - 6' H - PICEA PUNGENS GLAUCA - (COLORADO BLUE SPRUCE) D2002272
- EWP - 6' H - PINUS STROBUS - (EASTERN WHITE PINE) D2002972

SHRUBS

- SRD - 3' H - CORNUS SERICEA - (REDOSIER DOGWOOD) C2C01636
- SNF - 3' H - FORSYTHIA NORTHERN SUN - (NORTHERN SUN BORDERFORSYTHIA) C2C03036
- SAV - 2.5' H - VIBERNUM DENTATUM MORTON - (NORTHERN BURGUNDY ARROWWOOD VIBERNUM) C2C11830
- SPJ - 3' W - JUNIPERUS CHINENSIS PFITZER ANA COMPACT - (COMPACT PFITZER JUNIPER) D2000536

REVISIONS	
NAME	DATE

ILLINOIS DEPARTMENT OF TRANSPORTATION

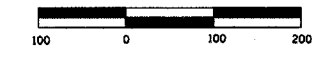
LANDSCAPING PLAN
SHEET 1 OF 5

SCALE: 1" = 100'
 DATE: _____

DRAWN BY DIST 7
 CHECKED BY DIST 7

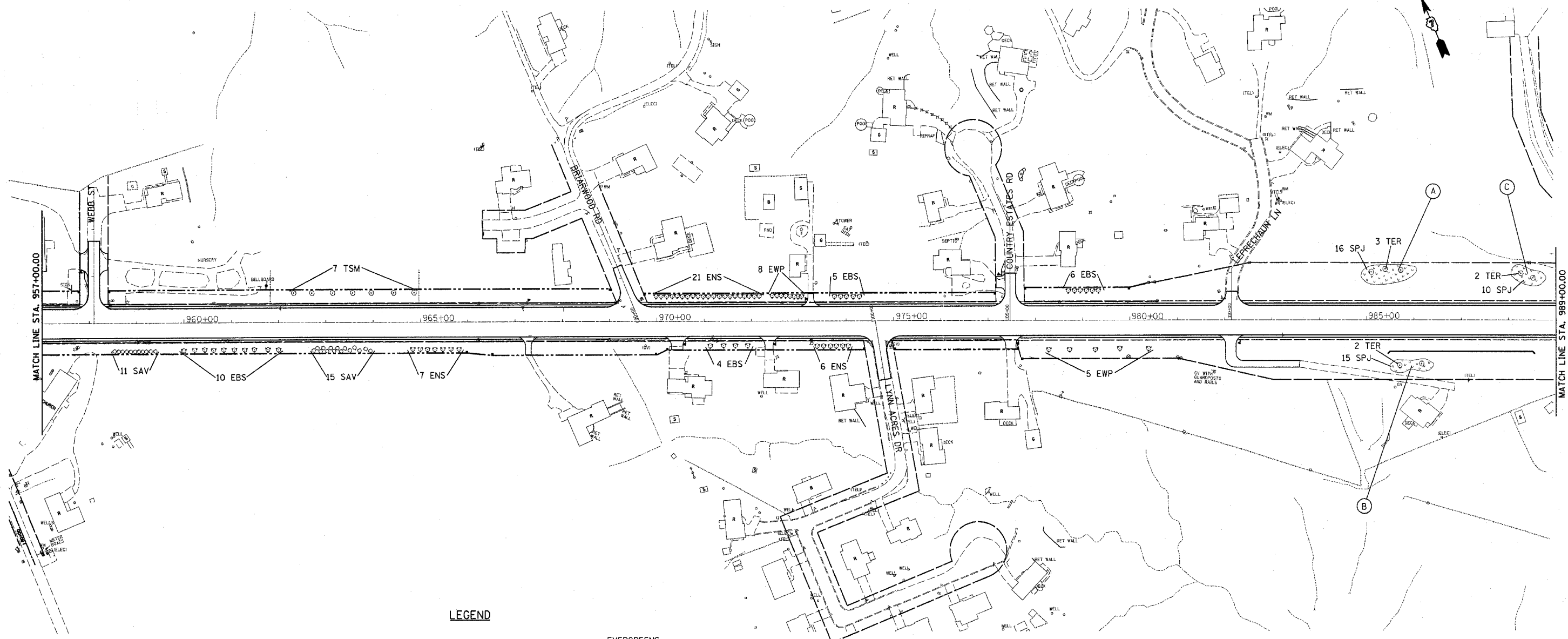
\$USERS
\$DATE\$
LJN-SPEC

FAP NO.	SECTION	COUNTY	TOTAL SHEETS	SHEET NO.
774	*	EFFINGHAM	22	7
FED. ROAD DIST. NO.		ILLINOIS	FED. AID PROJECT NO.	



CONTRACT NO. 74128

• (107, 107Z) LS



LEGEND

TREES

- TCM - 2" CAL - ACER PLATANOIDES COLUMARE - (COLUMNAR NORWAY MAPLE) A2000716
- TRM - 2" CAL - ACER RUBRUM RED SUNSET - (RED SUNSET RED MAPLE) A2001216
- TSM - 2" CAL - ACER SACCHARUM - (SUGAR MAPLE) A2001716
- TRB - 2.5" CAL - BETULA NIGRA - (RIVER BIRCH) A2002320
- TNC - 2" CAL - CATALPA SPECIOSA - (NORTHERN CATALPA) A2002816
- TSB - 5' CLUMP - AMELANCHIER LAEVIS - (ALLEGHENY SERVICEBERRY) B2000964
- TER - 2" CAL - CERCIC CANADENSIS - (EASTERN REDBUD) B2001116
- TBC - 2" CAL - TAXODIUM DISTICHUM - (COMMON BALD CYPRESS) A2007616

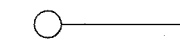
EVERGREENS

- ENS - 6' H - PICEA ABIES - (NORWAY SPRUCE) D2001772
- EBS - 6' H - PICEA PUNGENS GLAUCA - (COLORADO BLUE SPRUCE) D2002272
- EWP - 6' H - PINUS STROBUS - (EASTERN WHITE PINE) D2002972

SHRUBS

- SRD - 3' H - CORNUS SERICEA - (REDSIER DOGWOOD) C2C01636
- SNF - 3' H - FORSYTHIA NORTHERN SUN - (NORTHERN SUN BORDERFORSYTHIA) C2C03036
- SAV - 2.5' H - VIBERNUM DENTATUM MORTON - (NORTHERN BURGUNDY ARROWWOOD VIBERNUM) C2C11830
- SPJ - 3' W - JUNIPERUS CHINENSIS PFITZER ANA COMPACT - (COMPACT PFITZER JUNIPER) D2000536

DENOTES BED AREA (SEE SHEET # 4)



REVISIONS	
NAME	DATE

ILLINOIS DEPARTMENT OF TRANSPORTATION

**LANDSCAPING PLAN
SHEET 2 OF 5**

SCALE: 1" = 100'
DATE

DRAWN BY DIST 7
CHECKED BY DIST 7

\$USER\$
 \$DATE\$
 LJN-SPEC

FAP NO.	SECTION	COUNTY	TOTAL SHEETS	SHEET NO.
774	*	EFFINGHAM	22	8

FED. ROAD DIST. NO. ILLINOIS FED. AID PROJECT NO.
 CONTRACT NO. 74128
 * (107, 107Z) LS

LEGEND

TREES

- TCM - 2" CAL - ACER PLATANOIDES COLUMARE - (COLUMNAR NORWAY MAPLE) A2000716
- TRM - 2" CAL - ACER RUBRUM RED SUNSET - (RED SUNSET RED MAPLE) A2001216
- TSM - 2" CAL - ACER SACCHARUM - (SUGAR MAPLE) A2001716
- TRB - 2.5" CAL - BETULA NIGRA - (RIVER BIRCH) A2002320
- TNC - 2" CAL - CATALPA SPECIOSA - (NORTHERN CATALPA) A2002816
- TSB - 5' CLUMP - AMELANCHIER LAEVIS - (ALLEGHENY SERVICEBERRY) B2000964
- TER - 2" CAL - CERCIC CANADENSIS - (EASTERN REDBUD) B2001116
- TBC - 2" CAL - TAXODIUM DISTICHUM - (COMMON BALD CYPRESS) A2007616

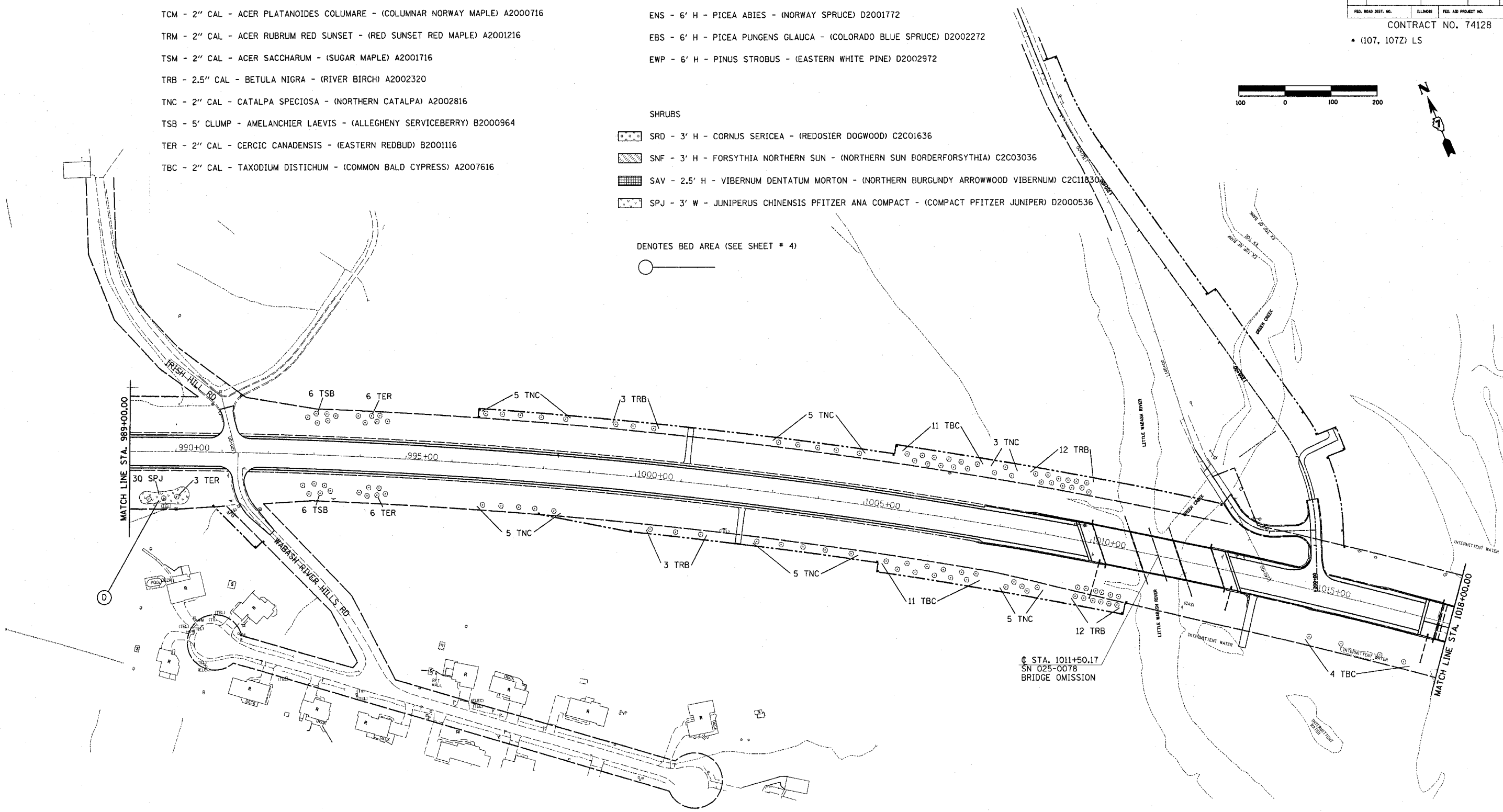
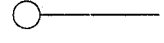
EVERGREENS

- ENS - 6' H - PICEA ABIES - (NORWAY SPRUCE) D2001772
- EBS - 6' H - PICEA PUNGENS GLAUCA - (COLORADO BLUE SPRUCE) D2002272
- EWP - 6' H - PINUS STROBUS - (EASTERN WHITE PINE) D2002972

SHRUBS

- SRD - 3' H - CORNUS SERICEA - (REDOSEIER DOGWOOD) C2C01636
- SNF - 3' H - FORSYTHIA NORTHERN SUN - (NORTHERN SUN BORDERFORSYTHIA) C2C03036
- SAV - 2.5' H - VIBERNUM DENTATUM MORTON - (NORTHERN BURGUNDY ARROWWOOD VIBERNUM) C2C11830
- SPJ - 3' W - JUNIPERUS CHINENSIS PFITZER ANA COMPACT - (COMPACT PFITZER JUNIPER) D2000536

DENOTES BED AREA (SEE SHEET # 4)



STA. 1011+50.17
 SN 025-0078
 BRIDGE OMISSION

REVISIONS	
NAME	DATE

ILLINOIS DEPARTMENT OF TRANSPORTATION
LANDSCAPING PLAN
 SHEET 3 OF 5
 SCALE: 1" = 100'
 DATE
 DRAWN BY DIST 7
 CHECKED BY DIST 7

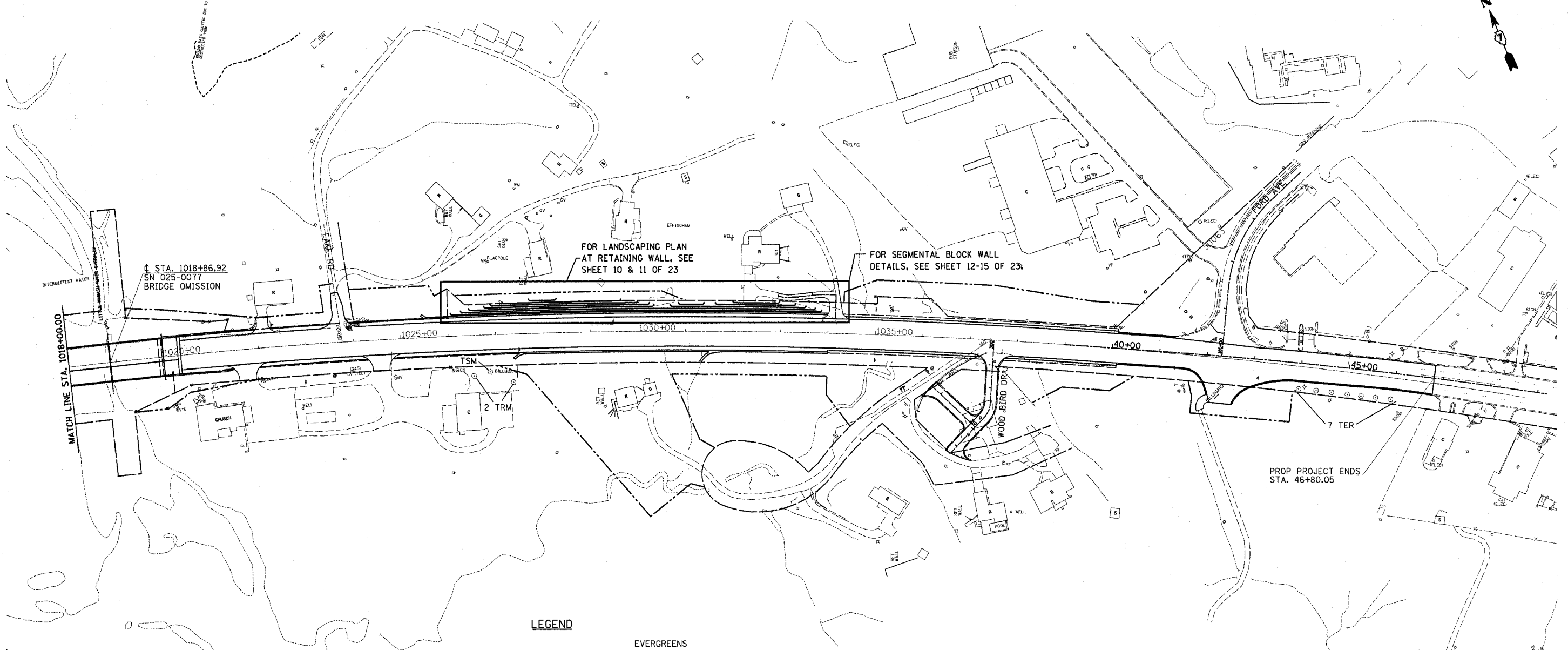
FAP NO.	SECTION	COUNTY	TOTAL SHEETS	SHEET NO.
774	*	EFFINGHAM	22	9
FED. ROAD DIST. NO.		ILLINOIS		FED. AID PROJECT NO.

CONTRACT NO. 74128

• (107, 107Z) LS



\$USER\$
\$DATE\$
LJN-SPEC



STATION 1018+86.92
SN 025-0077
BRIDGE OMISSION

FOR LANDSCAPING PLAN
AT RETAINING WALL, SEE
SHEET 10 & 11 OF 23

FOR SEGMENTAL BLOCK WALL
DETAILS, SEE SHEET 12-15 OF 23

PROP PROJECT ENDS
STA. 46+80.05

LEGEND

TREES

- TCM - 2" CAL - ACER PLATANOIDES COLUMARE - (COLUMNAR NORWAY MAPLE) A2000716
- TRM - 2" CAL - ACER RUBRUM RED SUNSET - (RED SUNSET RED MAPLE) A2001216
- TSM - 2" CAL - ACER SACCHARUM - (SUGAR MAPLE) A2001716
- TRB - 2.5" CAL - BETULA NIGRA - (RIVER BIRCH) A2002320
- TNC - 2" CAL - CATALPA SPECIOSA - (NORTHERN CATALPA) A2002816
- TSB - 5' CLUMP - AMELANCHIER LAEVIS - (ALLEGHENY SERVICEBERRY) B2000964
- TER - 2" CAL - CERCIC CANADENSIS - (EASTERN REDBUD) B2001116
- TBC - 2" CAL - TAXODIUM DISTICHUM - (COMMON BALD CYPRESS) A2007616

EVERGREENS

- ENS - 6' H - PICEA ABIES - (NORWAY SPRUCE) D2001772
- EBS - 6' H - PICEA PUNGENS GLAUCA - (COLORADO BLUE SPRUCE) D2002272
- EWP - 6' H - PINUS STROBUS - (EASTERN WHITE PINE) D2002972

SHRUBS

- SRD - 3' H - CORNUS SERICEA - (REDSIER DOGWOOD) C2C01636
- SNF - 3' H - FORSYTHIA NORTHERN SUN - (NORTHERN SUN BORDERFORSYTHIA) C2C03036
- SAV - 2.5' H - VIBERNUM DENTATUM MORTON - (NORTHERN BURGUNDY ARROWWOOD VIBERNUM) C2C11830
- SPJ - 3' W - JUNIPERUS CHINENSIS PFITZER ANA COMPACT - (COMPACT PFITZER JUNIPER) D2000536

○ DENOTES BED AREA (SEE SHEET # 4)

REVISIONS	
NAME	DATE

ILLINOIS DEPARTMENT OF TRANSPORTATION

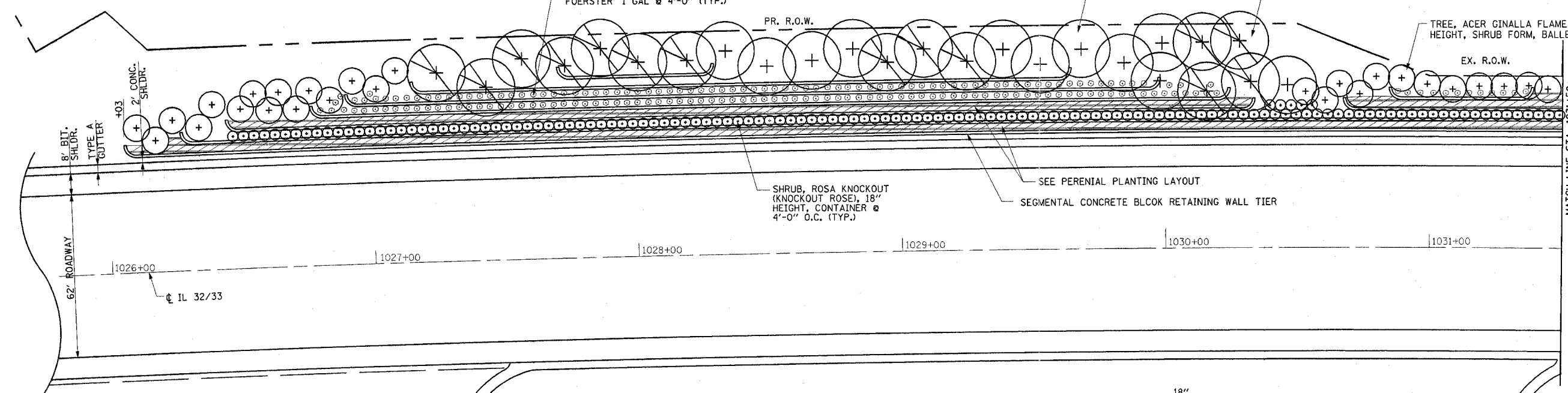
**LANDSCAPING PLAN
SHEET 4 OF 5**

SCALE: 1" = 100'
DATE

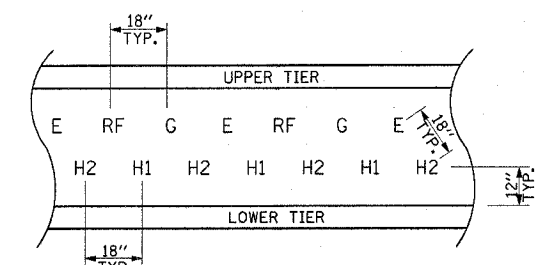
DRAWN BY DIST 7
CHECKED BY DIST 7

F.A.P. RTE.	SECTION	COUNTY	TOTAL SHEETS	SHEET NO.
774	(107, 107Z) LS	EFFINGHAM	22	10
FED. ROAD DIST. NO.	ILLINOIS	FED. AID PROJECT		

CONTRACT NO. 74128



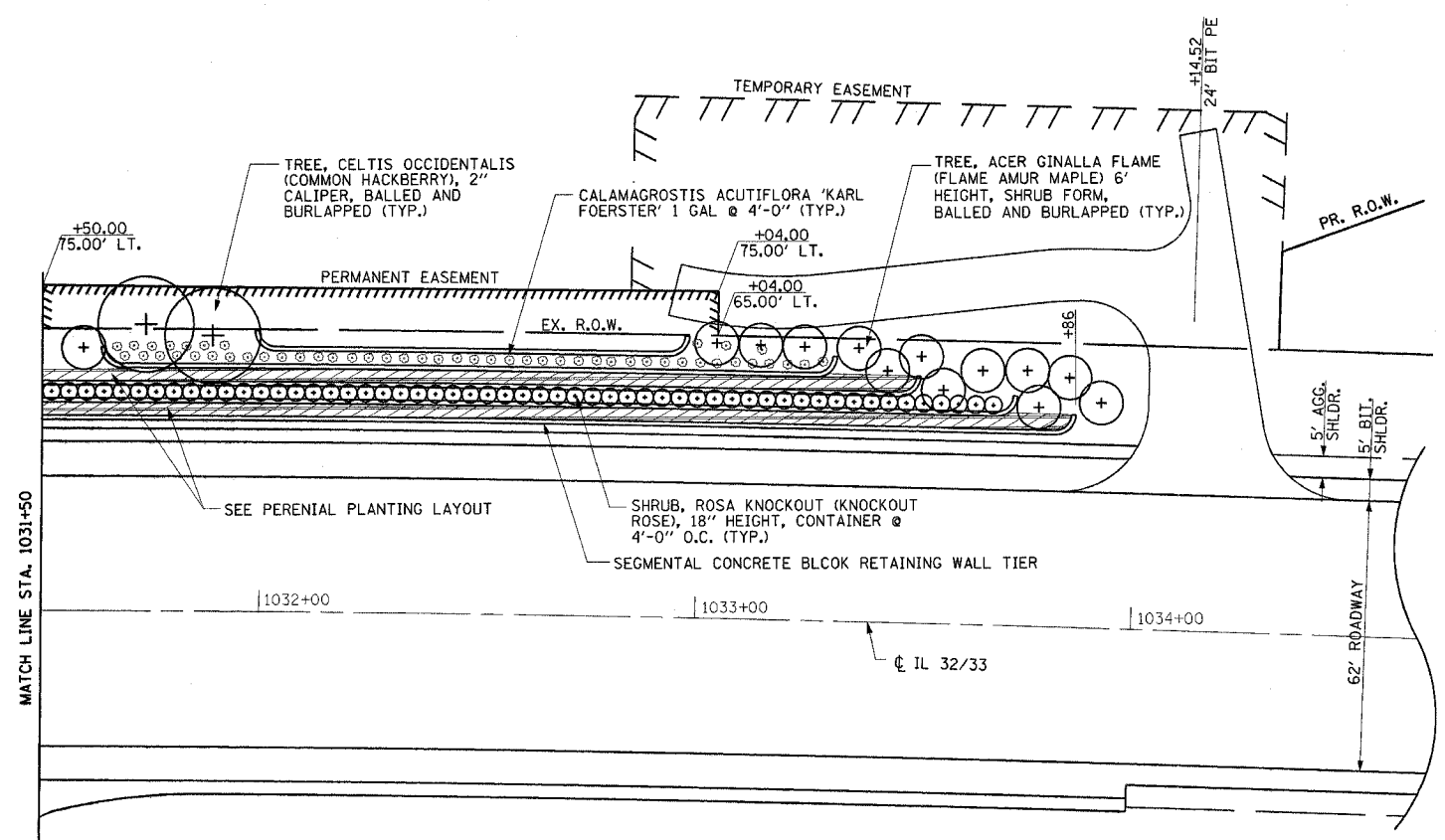
LANDSCAPING PLAN AT RETAINING WALL



PERENIAL PLANTING LAYOUT
(DENOTED ON PLAN)

LEGEND

- ⊙ CALAMAGROSTIS ACUTIFLORA, 'KARL FOERSTER', 1 GAL
- ⊙ SHRUB, ROSA KNOCKOUT (KNOCKOUT ROSE), 18" HEIGHT, CONTAINER
- H1 HEMEROCALLIS 'STELLA D'ORO' (PERENNIAL DAYLILY)
- H2 HEMEROCALLIS 'HAPPY RETURNS' CONTAINER GROWN (1 GALLON)
- RF RUDBECKIA FULGIDA 'GOLDSTRUM' (PERENNIAL BLACK EYED SUSAN)
- G GAILLARDIA X GRANDIFLORA 'GOBLIN' - CONTAINER GROWN (2 QUART)
- E ECHINACEA PURPUREA 'MAGNUS', 1 GALLON
- + TREE, CELTIS OCCIDENTALIS (COMMON HACKBERRY), 2" CALIPER, BALLED AND BURLAPPED
- ⊙ TREE, ACER REBRUM (RED MAPLE), 2" CALIPER, BALLED AND BURLAPPED
- ⊙ TREE, ACER GINNALA FLAME (FLAME AMUR MAPLE) 6' HEIGHT, SHRUB FORM, BALLED AND BURLAPPED



LANDSCAPING PLAN AT RETAINING WALL

NOTE:
ALL TIERS TO BE WOOD CHIPPED IN ACCORDANCE WITH SECTION 253 TO A MINIMUM DEPTH OF 3'.

REVISIONS	
NAME	DATE

ILLINOIS DEPARTMENT OF TRANSPORTATION

LANDSCAPING PLAN AT RETAINING WALL
SHEET 5 OF 5

DRAWN BY MLO
CHECKED BY SJK
DATE 12/03

STATE OF ILLINOIS
DEPARTMENT OF TRANSPORTATION

F.A.P. RTE.	SECTION	COUNTY	TOTAL SHEETS	SHEET NO.
774	(107, 107Z) LS	EFFINGHAM	22	11
FED. ROAD DIST. NO.		ILLINOIS FED. AID PROJECT		

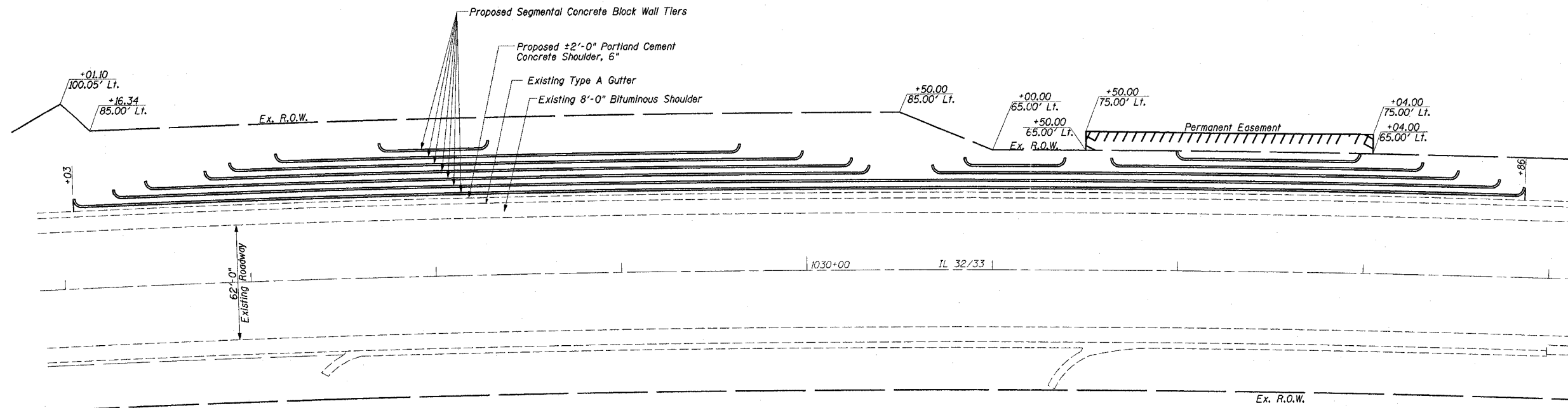
SHEET NO. 1
OF 12 SHEETS

CONTRACT NO. 74128

Benchmarks:

BM #60: 79' RT, Sta. 1024+86, Elev. 548.63
Chisled "X" on North Flange Bolt of Fire Hydrant

BM #12: 18' RT, Sta. 1030+71, Elev. 570.76
Chisled "□" Back of Gutter at Southwest Corner of Drop Inlet



OVERALL PLAN

(Existing Soil Nailed Walls not shown for clarity)

TOTAL BILL OF MATERIAL

ITEM	UNIT	QUANTITY
PIPE DRAINS, 4"	FOOT	3,832
SEGMENTAL CONCRETE BLOCK WALL	SQ FT	20,815
PORTLAND CEMENT CONCRETE SHOULDERS, 6"	SQ YD	174

DESIGN SPECIFICATIONS

2002 AASHTO Standard Specification
for Highway Bridges

SEQUENCE OF CONSTRUCTION:

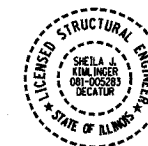
- Excavate at the lowest level tier as required to install front pipe drain and backfill with select granular backfill.
- Place the granular leveling pad and set the initial course of block at tier.
- Place pipe drain behind block and backfill between existing face of soil nailed wall and back of proposed block wall with select granular backfill.
- Place subsequent courses of block. Place select granular backfill and soil reinforcement (as required) in lifts per shop drawings to top of adjacent soil nailed tier.
- Move to next tier and repeat steps 2 through 4 for next tier.
- Set remaining 2 feet of block on previous tier, place geotechnical fabric between walls and backfill with cohesive material.
- Repeat steps 2 through 6 until upper most tier is reached. Grade to final 3:1 backslope.

GENERAL NOTES:

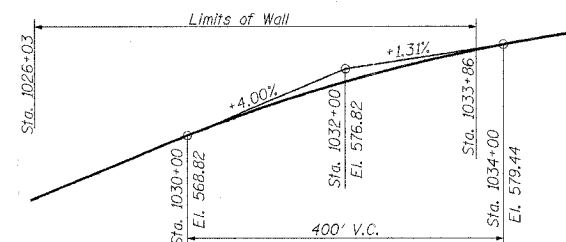
- Layout of segmental concrete block wall based on existing soil nailed wall design drawings. Layout may be varied in field to suit actual existing conditions with approval of the Engineer.
- See Sheets 5-12 of 12 for Soil Borings.
- Contractor to verify utility locations with J.U.L.I.E. prior to any excavation work.
- Materials:
Concrete Block ASTM C 1372
- See Special Provisions for additional requirements.
- Landscape and Wood Chip Tiers per plans immediately following wall construction.
- Seed disturbed areas beyond top tier per General Notes Sheet 2 of 12.

HORIZ. CURVE DATA

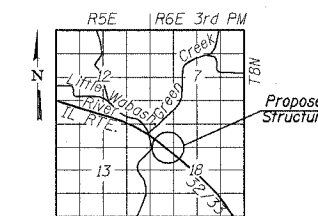
P.I. = Sta. 1014+09.68
 $\Delta = 25^{\circ}19'45''$ (RT)
 $D = 0^{\circ}30'00''$
 $R = 11,456.75'$
 $L = 5,064.76'$
 $T = 2,574.44'$
 $E = 285.69'$
 $S.E. = 1.56\%$
 P.C. = Sta. 988+35.24
 P.T. = Sta. 1039+00.00
 SE Attained Sta. 985+68.57 to Sta. 989+68.57
 SE Removed Sta. 1037+66.67 to Sta. 1041+66.67



Sheila J. Kimlinger, P.E., S.E. Date
Structural Engineer License No. 081-005283
Expiration Date: 11/30/2006



IL 32/33 PROFILE GRADE

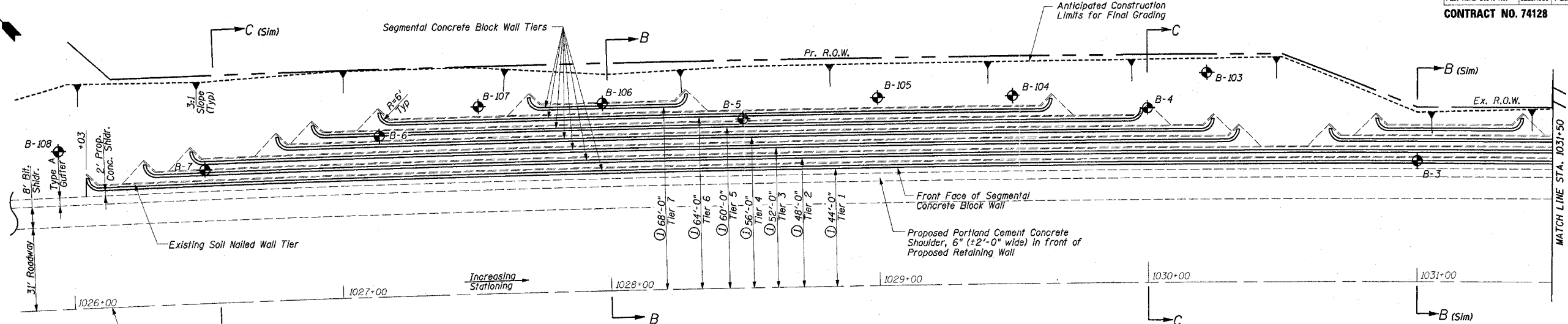


LOCATION SKETCH

GENERAL PLAN
ILLINOIS ROUTE 32/33
F.A.P. ROUTE 774
EFFINGHAM COUNTY
RETAINING WALL
STA. 1026+03.00 LT. TO STA. 1033+86.00 LT.
STRUCTURE NUMBER 025-W008

STATE OF ILLINOIS
DEPARTMENT OF TRANSPORTATION

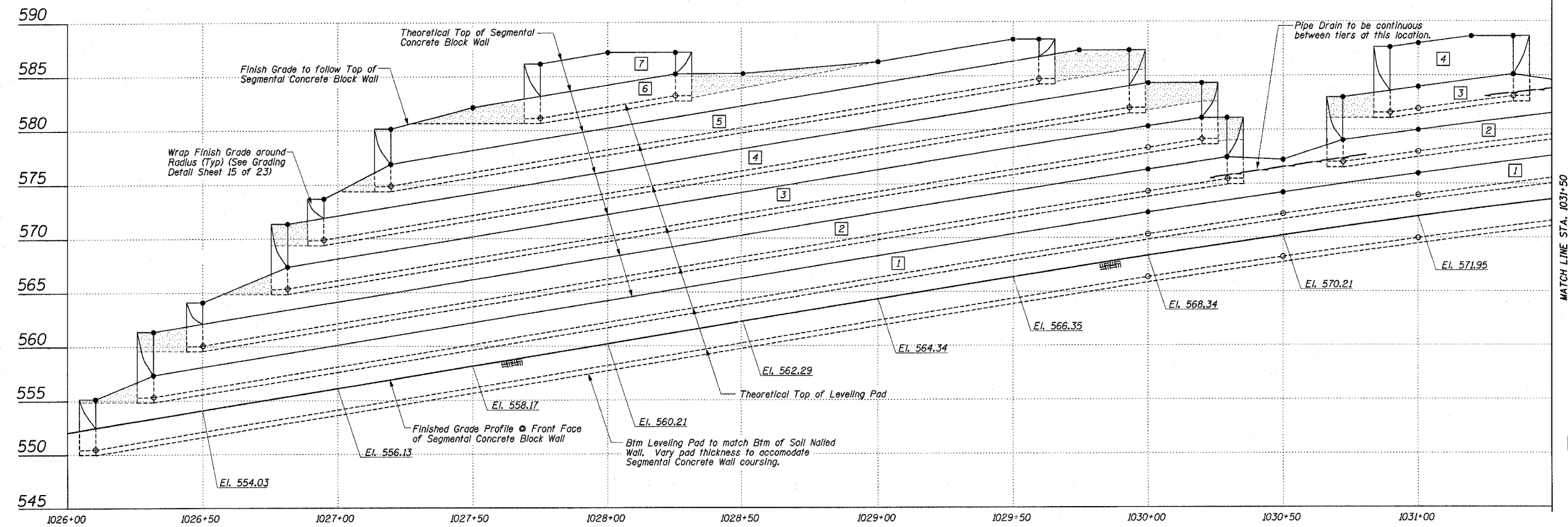
F.A.P. RTE.	SECTION	COUNTY	TOTAL SHEETS	SHEET NO.	SHEET NO. 2 OF 12 SHEETS
774	(107, 1072) LS	EFFINGHAM	22	12	
FED. ROAD DIST. NO.	ILLINOIS FED. AID PROJECT	CONTRACT NO. 74128			



SEGMENTAL CONCRETE BLOCK WALL PLAN
For Section B-B See Sheet 14 of 23

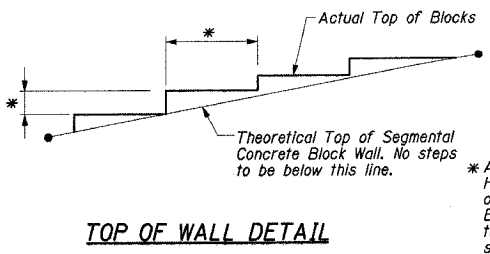
For Section C-C See Sheet 14 of 23

① Horizontal dimensions shown are to work points. (See Detail 4 Sheet 3 of 12)



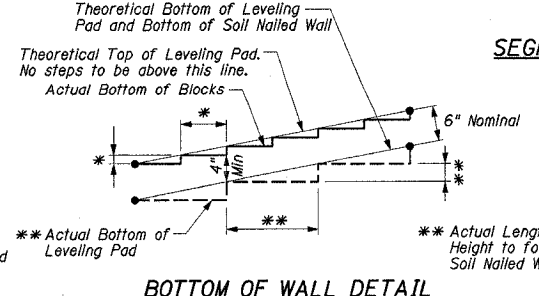
SEGMENTAL CONCRETE BLOCK WALL ELEVATION

- LEGEND**
- Denotes Top of Wall Work Point.
 - Denotes Btm of Wall Work Point
 - ▨ Area where height of Segmental Concrete Block Wall exceeds height of Soil Nailed Wall. See Section C-C Sheet 5.
 - Denotes Tier No.



TOP OF WALL DETAIL

* Actual Length, Location & Height of steps to be shown on shop drawings. Existing pad shall be adjusted to match steps on approved shop drawings. Cost included in Segmental Concrete Block Wall.



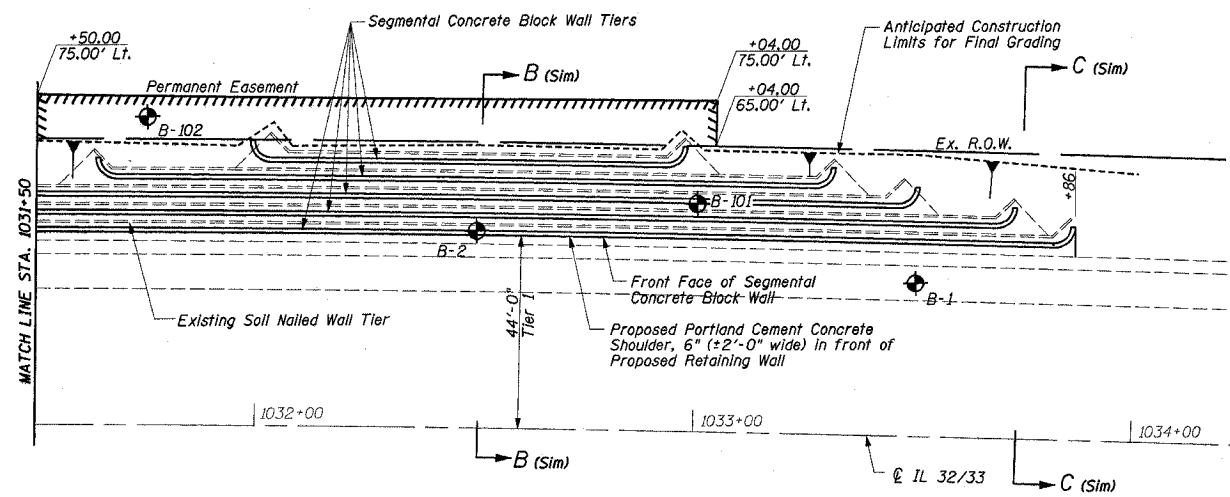
BOTTOM OF WALL DETAIL

** Actual Length, Location & Height to follow Bottom of Soil Nailed Wall.

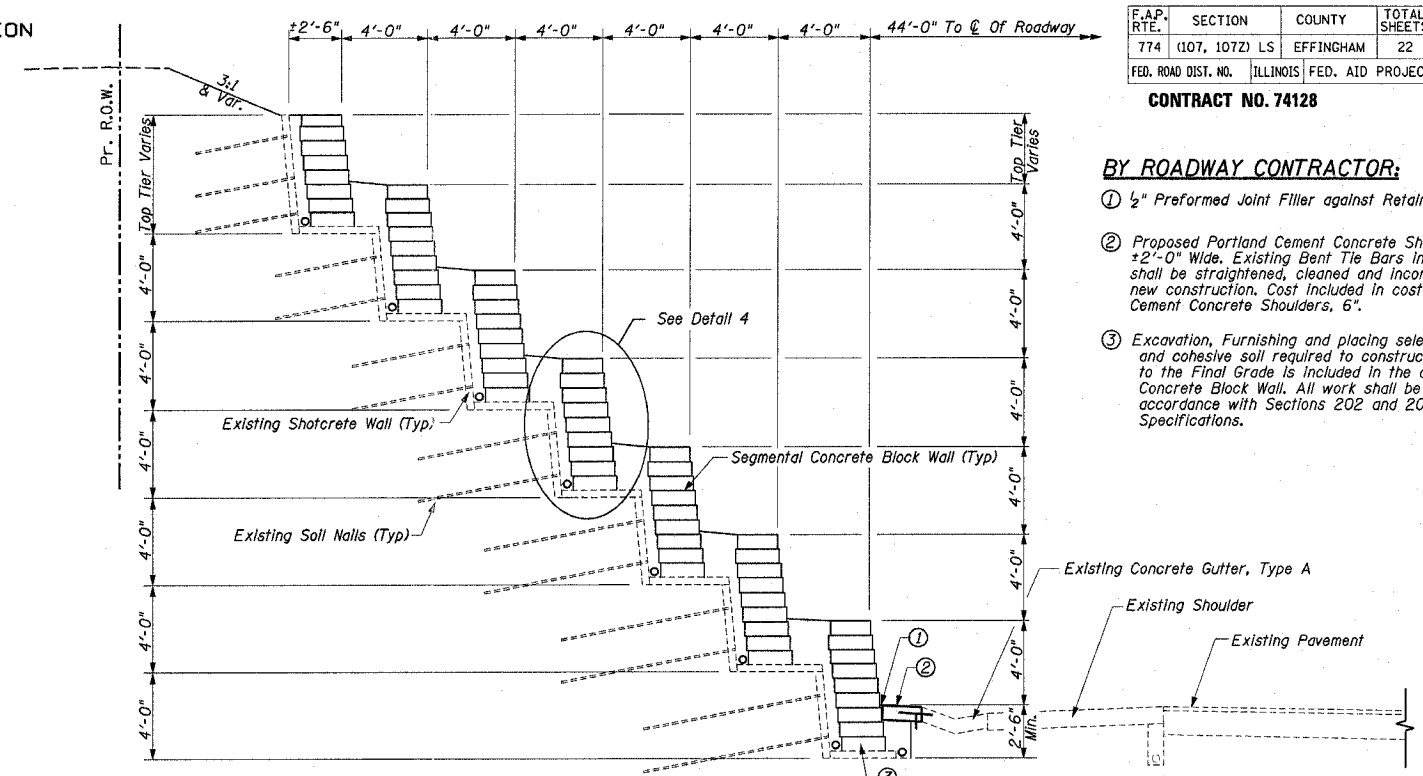
SEGMENTAL CONCRETE BLOCK WALL
ILLINOIS ROUTE 32/33
F.A.P. ROUTE 774
EFFINGHAM COUNTY
RETAINING WALL
STA. 1026+03.00 LT. TO STA. 1033+86.00 LT.
STRUCTURE NUMBER 025-W008

BY ROADWAY CONTRACTOR:

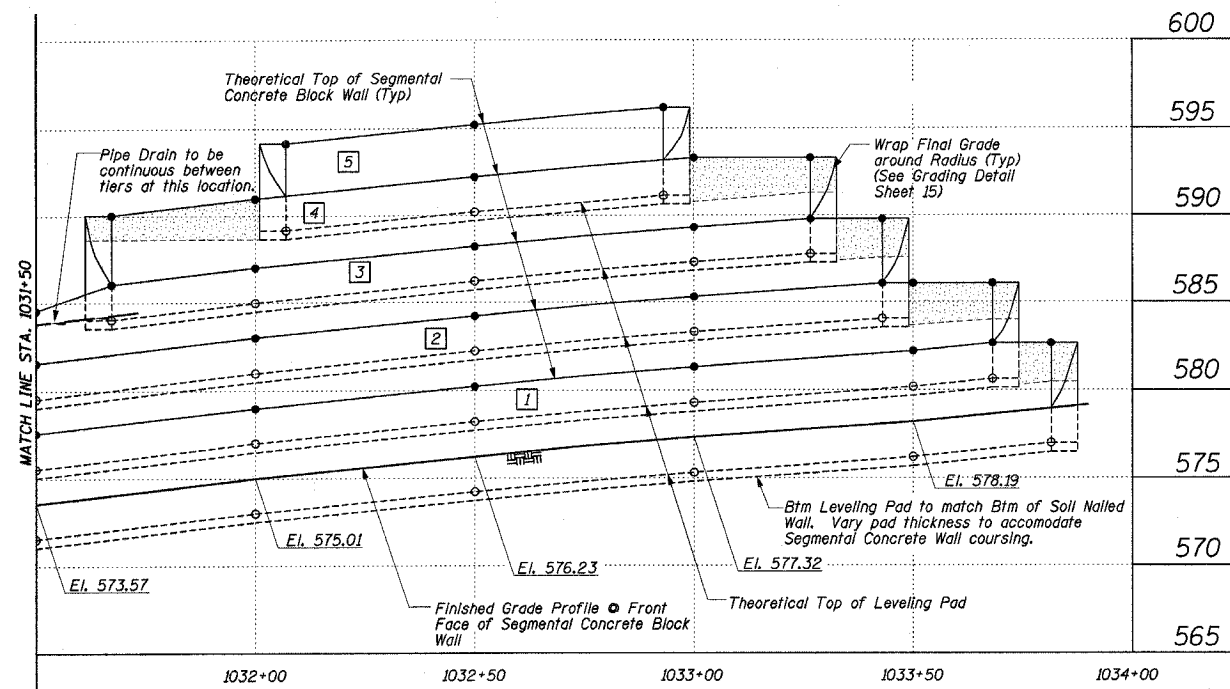
- 1/2" Preformed Joint Filler against Retaining Wall
- Proposed Portland Cement Concrete Shoulder, 6" ± 2'-0" Wide. Existing Bent Tie Bars in Concrete Gutter shall be straightened, cleaned and incorporated into new construction. Cost included in cost of Portland Cement Concrete Shoulders, 6".
- Excavation, Furnishing and placing select granular backfill and cohesive soil required to construct the Retaining Wall to the Final Grade is included in the cost of Segmental Concrete Block Wall. All work shall be completed in accordance with Sections 202 and 205 of the Standard Specifications.



SEGMENTAL CONCRETE BLOCK WALL PLAN



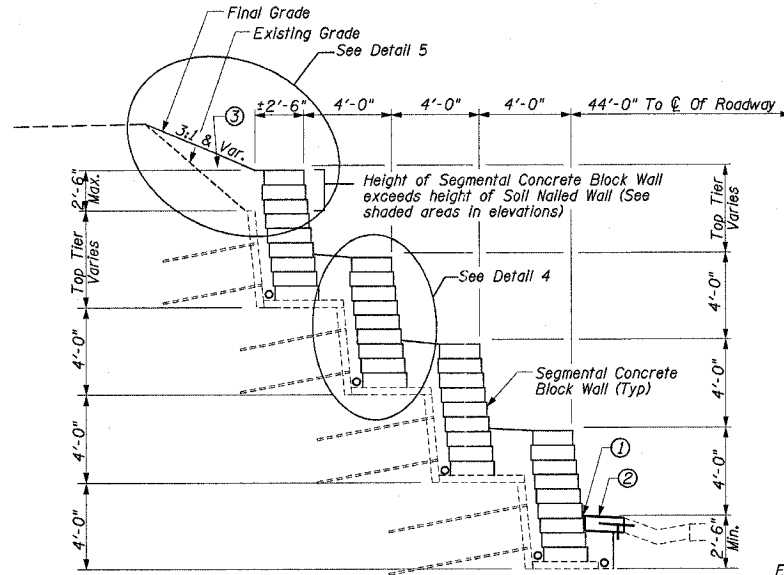
SECTION B-B
TYPICAL TIERED RETAINING WALL
(Sta. 1028+00.00 Shown, Others Similar)



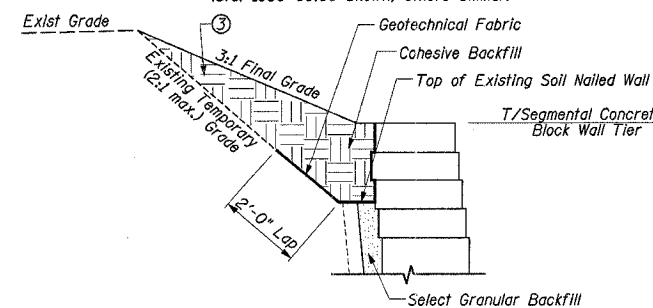
SEGMENTAL CONCRETE BLOCK WALL ELEVATION

LEGEND

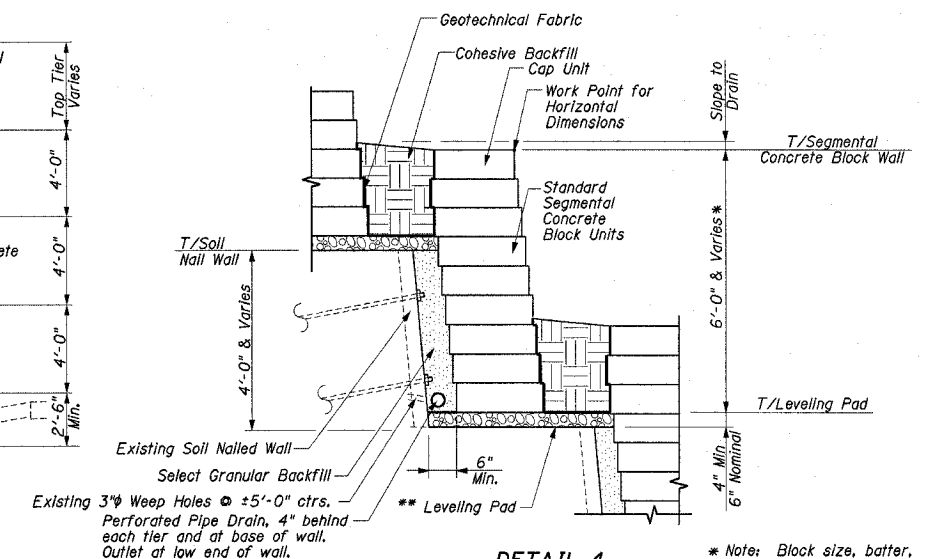
- Denotes Top of Wall Work Point.
- Denotes Btm of Wall Work Point
- ▨ Area where height of Segmental Concrete Block Wall exceeds height of Soil Nailed Wall. See Section C-C.
- Denotes Tier No.



SECTION C-C
TYPICAL TIERED RETAINING WALL
(Sta. 1030+00.00 Shown, Others Similar)



DETAIL 5



DETAIL 4
Typical Segmental Concrete Block Wall Tier

** Existing pad shall be adjusted to dimensions of steps on approved shop drawings. Cost included in segmental concrete block wall.

* Note: Block size, batter, setback & no. of courses per Wall Supplier Design (See Special Provision)

SEGMENTAL CONCRETE BLOCK WALL
ILLINOIS ROUTE 32/33
F.A.P. ROUTE 774
EFFINGHAM COUNTY
RETAINING WALL
STA. 1026+03.00 LT. TO STA. 1033+86.00 LT.
STRUCTURE NUMBER 025-W008

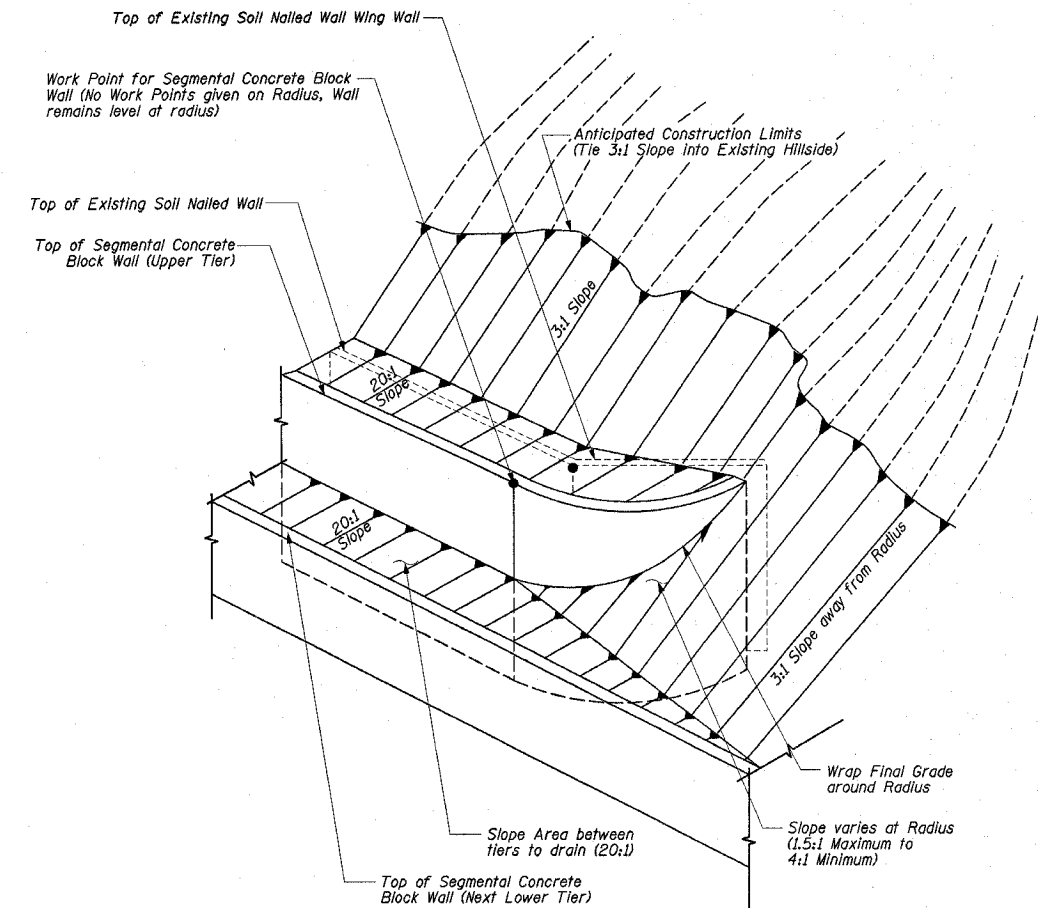
STATE OF ILLINOIS
DEPARTMENT OF TRANSPORTATION

F.A.P. RTE.	SECTION	COUNTY	TOTAL SHEETS	SHEET NO.	SHEET NO. 4 OF 12 SHEETS
774	(107, 1072) LS	EFFINGHAM	22	14	
FED. ROAD DIST. NO.	ILLINOIS FED. AID PROJECT				

CONTRACT NO. 74128

Segmental Concrete Block Wall Work Points				
Tier	Station	Offset	Top of Wall Elevation	Bottom of Wall Elevation
7	1027+75.00	68'-0"	586.20	581.18
7	1028+00.00	68'-0"	587.22	
7	1028+25.00	68'-0"	587.22	583.24
6	1027+20.00	64'	580.17	574.90
6	1027+50.00	64'	582.17	
6	1028+25.00	64'	585.26	
6	1028+50.00	64'	585.29	
6	1029+00.00	64'	586.34	
6	1029+50.00	64'	588.36	
6	1029+60.00	64'	588.36	584.73
5	1026+95.00	60'	573.70	569.91
5	1027+20.00	60'	576.92	
5	1029+75.00	60'	587.35	
5	1029+93.00	60'	587.35	582.05
5	1032+07.00	60'	594.18	589.17
5	1032+50.00	60'	595.24	590.23
5	1032+93.00	60'	596.19	591.16
4	1026+81.00	56'	571.37	565.36
4	1030+00.00	56'	584.34	578.33
4	1030+20.00	56'	584.34	579.13
4	1030+90.00	56'	587.60	581.60
4	1031+00.00	56'	587.96	581.94
4	1031+20.00	56'	588.62	
4	1031+35.00	56'	588.62	583.12
4	1031+67.00	56'		584.06
4	1032+00.00	56'	591.01	585.00
4	1032+50.00	56'	592.24	586.23
4	1033+00.00	56'	593.32	587.31
4	1033+27.00	56'	593.32	587.78
3	1026+50.00	52'	564.11	560.09
3	1026+57.00	52'		
3	1026+81.00	52'	567.37	
3	1030+00.00	52'	580.34	574.33
3	1030+20.00	52'	581.13	
3	1030+29.00	52'	581.13	575.47
3	1030+72.00	52'	583.00	577.01
3	1031+00.00	52'	583.96	577.94
3	1031+35.00	52'	585.12	
3	1031+50.00	52'	584.57	579.56
3	1031+67.00	52'	586.07	
3	1032+00.00	52'	587.01	581.01
3	1032+50.00	52'	588.24	582.23
3	1033+00.00	52'	589.32	583.31
3	1033+27.00	52'	589.79	
3	1033+43.00	52'	589.79	584.07

Segmental Concrete Block Wall Work Points				
Tier	Station	Offset	Top of Wall Elevation	Bottom of Wall Elevation
2	1026+32.00	48'	561.37	555.37
2	1030+00.00	48'	576.34	570.33
2	1030+29.00	48'	577.45	
2	1030+50.00	48'	577.21	572.20
2	1030+72.00	48'	579.00	
2	1031+00.00	48'	579.96	573.95
2	1031+50.00	48'	581.57	575.56
2	1032+00.00	48'	583.01	577.00
2	1032+50.00	48'	584.24	578.23
2	1033+00.00	48'	585.32	579.31
2	1033+43.00	48'	586.08	
2	1033+50.00	48'	586.08	580.19
2	1033+68.00	48'	586.08	580.63
1	1026+10.00	44'	555.17	550.49
1	1026+32.00	44'	557.37	
1	1030+00.00	44'	572.34	566.34
1	1030+50.00	44'	574.21	568.21
1	1031+00.00	44'	575.96	569.96
1	1031+50.00	44'	577.57	571.57
1	1032+00.00	44'	579.01	573.01
1	1032+50.00	44'	580.24	574.24
1	1033+00.00	44'	581.32	575.32
1	1033+50.00	44'	582.20	576.20
1	1033+68.00	44'	582.65	
1	1033+81.00	44'	582.65	576.98



WORK POINT AND FINAL GRADING DETAIL

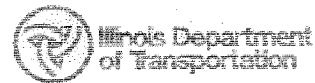
WALL ELEVATIONS
ILLINOIS ROUTE 32/33
F.A.P. ROUTE 774
EFFINGHAM COUNTY
RETAINING WALL
STA. 1026+03.00 LT. TO STA. 1033+86.00 LT.
STRUCTURE NUMBER 025-W008

STATE OF ILLINOIS
DEPARTMENT OF TRANSPORTATION

F.A.P. RTE.	SECTION	COUNTY	TOTAL SHEETS	SHEET NO.
774	(107, 107Z) LS	EFFINGHAM	22	15
FED. ROAD DIST. NO.		ILLINOIS	FED. AID PROJECT	

SHEET NO. 5
OF 12 SHEETS

CONTRACT NO. 74128



SKS ENGINEERS, INC.
SOIL BORING LOG

Page 1 of 1
Date 04/23/2001

ROUTE ILL. RT. 33 DESCRIPTION Retaining Wall LOGGED BY T. Skinner/D. Baldwin
SECTION 107 WRS-1 LOCATION Effingham SEC. TWP. RNG. PM
COUNTY Effingham DRILLING METHOD Hollow Stem Auger HAMMER TYPE 140# Safety

STRUCT. NO.	D	B	U	M	Surface Water Elev.	H	D	B	U	M
Station	E	L	C	O	Stream Bed Elev.	R	E	L	C	O
BORING NO.	T	W	S	S	Groundwater Elev.:	Dry	H	T	W	S
Station	H	S	Qu	T	First Encounter	Dry	H	S	Qu	T
Offset	(ft)	(in)	(ft)	(in)	Upon Completion	Dry	(ft)	(in)	(ft)	(in)
Ground Surface Elev.	(ft)	(in)	(ft)	(in)	After 24 Hrs	(ft)	(in)	(ft)	(in)	(ft)
SILTY CLAY LOAM - Gray-Brown, moist, soft, low plasticity, little sand, trace gravel, organics - A-6	5				21					13
- brown	3									
- mottled brown-gray	9									
	4									
	5									
	7									
	11									
SILTY CLAY LOAM - Gray-Brown, moist, hard, low plasticity, trace-little sand, trace gravel, organics - A-6	27									
	33									
	60+									
SILTY CLAY LOAM - Brown, moist, hard, low plasticity, some sand, trace gravel - A-6	10									
	26									
	60+									
	26									
	60+									
EXTREMELY WEATHERED SANDSTONE - Brown, moist, very dense, fine-medium, trace gravel - A-1-B	18									
	30									
	60+									
	60+									
	26									

The Unconfined Compressive Strength (UCS) Failure Mode is indicated by (B-Bulge, S-Shear, P-Penetrometer)
The SPT (N value) is the sum of the last two blow values in each sampling zone (AASHTO T206)

BBS 137 (3/01)



SKS ENGINEERS, INC.
SOIL BORING LOG

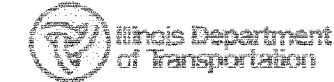
Page 1 of 1
Date 04/23/2001

ROUTE ILL. RT. 33 DESCRIPTION Retaining Wall LOGGED BY T. Skinner/D. Baldwin
SECTION 107 WRS-1 LOCATION Effingham SEC. TWP. RNG. PM
COUNTY Effingham DRILLING METHOD Hollow Stem Auger HAMMER TYPE 140# Safety

STRUCT. NO.	D	B	U	M	Surface Water Elev.	H	D	B	U	M
Station	E	L	C	O	Stream Bed Elev.	R	E	L	C	O
BORING NO.	T	W	S	S	Groundwater Elev.:	Dry	H	T	W	S
Station	H	S	Qu	T	First Encounter	Dry	H	S	Qu	T
Offset	(ft)	(in)	(ft)	(in)	Upon Completion	Dry	(ft)	(in)	(ft)	(in)
Ground Surface Elev.	(ft)	(in)	(ft)	(in)	After 24 Hrs	(ft)	(in)	(ft)	(in)	(ft)
SILTY CLAY LOAM - Reddish Brown, moist, firm, low-medium plasticity, trace sand, trace gravel, organics - A-6	3				26					12
- mottled gray-brown, stiff	3									
- soft-very stiff	5									
	8									
	16									
	27									
SANDSTONE INTERBEDDED WITH SHALE	12									
	19									
	9									
	12									
	15									
	31									
	11									
	12									
	14									
	14.5									
SILTY CLAY LOAM - Mottled Gray-Brown, moist, hard, low plasticity, trace-little sand, trace gravel - A-6	15									
	25									
	25+									
	30									
	60+									
	30									
	60+									
	20									
	60+									
	20									
	60+									
SANDSTONE - Flag	20									

The Unconfined Compressive Strength (UCS) Failure Mode is indicated by (B-Bulge, S-Shear, P-Penetrometer)
The SPT (N value) is the sum of the last two blow values in each sampling zone (AASHTO T206)

BBS 137 (3/01)



SKS ENGINEERS, INC.
SOIL BORING LOG

Page 1 of 1
Date 04/23/2001

ROUTE ILL. RT. 33 DESCRIPTION Retaining Wall LOGGED BY T. Skinner/D. Baldwin
SECTION 107 WRS-1 LOCATION Effingham SEC. TWP. RNG. PM
COUNTY Effingham DRILLING METHOD Hollow Stem Auger HAMMER TYPE 140# Safety

STRUCT. NO.	D	B	U	M	Surface Water Elev.	H	D	B	U	M
Station	E	L	C	O	Stream Bed Elev.	R	E	L	C	O
BORING NO.	T	W	S	S	Groundwater Elev.:	Dry	H	T	W	S
Station	H	S	Qu	T	First Encounter	Dry	H	S	Qu	T
Offset	(ft)	(in)	(ft)	(in)	Upon Completion	Dry	(ft)	(in)	(ft)	(in)
Ground Surface Elev.	(ft)	(in)	(ft)	(in)	After 24 Hrs	(ft)	(in)	(ft)	(in)	(ft)
SILTY CLAY LOAM - Gray-Brown, moist, firm, low-plasticity, little sand, trace gravel, organics - A-6	2				18					8
- mottled brown-gray, stiff	3									
- very stiff	4									
	5									
	8									
	10									
	13									
	26									
	29+									
	31									
	29+									
	11									
	31									
	29+									
	7									
SILTY CLAY LOAM - Mottled Gray-Brown, moist, very stiff, low plasticity, trace-little sand, trace gravel, organics - A-6	6									
	7									
	2									
	9.5									
SILTY CLAY LOAM - Gray, moist, low plasticity, hard, trace sand, trace gravel - A-6	10									
	26									
	60+									
	40									
	60+									
	14									
SILTY CLAY LOAM - Dark Gray, moist, hard, low-medium plasticity, trace sand, trace gravel - A-6	15									
	35									
	60+									
	60+									
	22									
	42									

The Unconfined Compressive Strength (UCS) Failure Mode is indicated by (B-Bulge, S-Shear, P-Penetrometer)
The SPT (N value) is the sum of the last two blow values in each sampling zone (AASHTO T206)

BBS 137 (3/01)

SOIL BORINGS LOGS
ILLINOIS ROUTE 32/33
F.A.P. ROUTE 774
SECTION 107 WRS-1, 107BY,
107BY-1 & 107B-2
EFFINGHAM COUNTY
RETAINING WALL
STA. 1026+03.00 LT. TO STA. 1033+86.00 LT.
STRUCTURE NUMBER 025-W008

STATE OF ILLINOIS
DEPARTMENT OF TRANSPORTATION

F.A.P. RTE.	SECTION	COUNTY	TOTAL SHEETS	SHEET NO.
774	(107, 107Z) LS	EFFINGHAM	22	17
FED. ROAD DIST. NO. ILLINOIS FED. AID PROJECT			OF 12 SHEETS	

CONTRACT NO. 74128



SKS ENGINEERS, INC.
SOIL BORING LOG

Page 1 of 2
Date 04/23/2001

ROUTE	IL Rt. 33	DESCRIPTION	Retaining Wall	LOGGED BY	T. Skinner/D. Baldwin
SECTION	107 WRS-1	LOCATION	Effingham	SEC.	
COUNTY	Effingham <th>DRILLING METHOD</th> <td>Hollow Stem Auger <th>HAMMER TYPE</th> <td>140# Safety</td> </td>	DRILLING METHOD	Hollow Stem Auger <th>HAMMER TYPE</th> <td>140# Safety</td>	HAMMER TYPE	140# Safety
STRUCT. NO.		Surface Water Elev.		D	B
Station		Stream Bed Elev.		E	L
BORING NO.	B-6	Groundwater Elev.:		U	M
Station	102745	First Encounter		C	O
Offset	57' L	Upon Completion		S	I
Ground Surface Elev.	594.0	After 24 Hrs		H	S
				T	W
				S	S
				Q	u
				(ft)	(in)
				(%)	(%)
SILTY CLAY LOAM - Reddish Brown, moist, firm, low-medium plasticity, trace sand, trace gravel, organics - A-6					
SILTY CLAY LOAM - Mottled Brown-Gray, moist, stiff-very stiff, low plasticity, trace sand, trace gravel - A-6					
SANDY CLAY LOAM - Brown, moist, very stiff, low plasticity, trace sand, trace gravel - A-6					
SILTY CLAY LOAM - Brown, moist, hard, low plasticity, trace sand, trace gravel - A-6					
SANDSTONE AND SHALE - 4age					
SHALE - Gray, moist, weathered					

The Unconfined Compressive Strength (UCS) Failure Mode is indicated by (B-Diuge, S-Shear, P-Penetrometer)
The SPT (N value) is the sum of the last two blow values in each sampling zone (AASHTO T208)
BBS 137 (301)



SKS ENGINEERS, INC.
SOIL BORING LOG

Page 2 of 2
Date 04/23/2001

ROUTE	IL Rt. 33	DESCRIPTION	Retaining Wall	LOGGED BY	T. Skinner/D. Baldwin
SECTION	107 WRS-1	LOCATION	Effingham	SEC.	
COUNTY	Effingham	DRILLING METHOD	Hollow Stem Auger	HAMMER TYPE	140# Safety
STRUCT. NO.		Surface Water Elev.		D	B
Station		Stream Bed Elev.		E	L
BORING NO.	B-3-2	Groundwater Elev.:		U	M
Station	102745	First Encounter		C	O
Offset	67' L	Upon Completion		S	I
Ground Surface Elev.	589.0	After 24 Hrs		H	S
				T	W
				S	S
				Q	u
				(ft)	(in)
				(%)	(%)
END OF BORING @ 41 ft Boring backfilled with spoil and capped with concrete upon completion					

The Unconfined Compressive Strength (UCS) Failure Mode is indicated by (B-Diuge, S-Shear, P-Penetrometer)
The SPT (N value) is the sum of the last two blow values in each sampling zone (AASHTO T208)
BBS 137 (301)



SKS ENGINEERS, INC.
SOIL BORING LOG

Page 1 of 1
Date 04/24/2001

ROUTE	IL Rt. 33	DESCRIPTION	Retaining Wall	LOGGED BY	T. Skinner/D. Baldwin
SECTION	107 WRS-1	LOCATION	Effingham	SEC.	
COUNTY	Effingham	DRILLING METHOD	Hollow Stem Auger	HAMMER TYPE	140# Safety
STRUCT. NO.		Surface Water Elev.		D	B
Station		Stream Bed Elev.		E	L
BORING NO.	B-7	Groundwater Elev.:		U	M
Station	1026+80	First Encounter		C	O
Offset	50' L	Upon Completion		S	I
Ground Surface Elev.	594.0	After 24 Hrs		H	S
				T	W
				S	S
				Q	u
				(ft)	(in)
				(%)	(%)
VERY SILTY CLAY LOAM - Gray-Brown, moist, firm, low-medium plasticity, trace sand, trace gravel, organics - A-6					
SILTY CLAY LOAM - Mottled Brown-Gray, moist, hard, low plasticity, trace sand, trace gravel - A-6					
SANDY CLAY LOAM - Brown-Gray, moist, hard, low plasticity, trace gravel - A-4					
CLAYEY SAND - Brown, moist, very dense, low plasticity, trace gravel - A-2-B					
SILTY CLAY LOAM - Mottled Gray-Brown, moist, hard, low plasticity, trace-fine sand, trace gravel - A-4					
SHALE					
END OF BORING @ 31 ft Boring backfilled with spoil and capped with concrete cylinder upon completion					
SILTY SAND - Brown, moist, very dense, fine, trace gravel, brown - A-2-B					
SILTY CLAY LOAM - Brown-Gray, moist, hard, low					

The Unconfined Compressive Strength (UCS) Failure Mode is indicated by (B-Diuge, S-Shear, P-Penetrometer)
The SPT (N value) is the sum of the last two blow values in each sampling zone (AASHTO T208)
BBS 137 (301)

SOIL BORINGS LOGS
ILLINOIS ROUTE 32/33
F.A.P. ROUTE 774
SECTION 107 WRS-1, 107BY,
107BY-1 & 107B-2
EFFINGHAM COUNTY
RETAINING WALL
STA. 1026+03.00 LT. TO STA. 1033+86.00 LT.
STRUCTURE NUMBER 025-W008

STATE OF ILLINOIS
DEPARTMENT OF TRANSPORTATION

F.A.P. RTE.	SECTION	COUNTY	TOTAL SHEETS	SHEET NO.
774	(107, 107Z) LS	EFFINGHAM	22	18
FED. ROAD DIST. NO.	ILLINOIS	FED. AID PROJECT		

SHEET NO. 8
OF 12 SHEETS

CONTRACT NO. 74128

ILLINOIS DEPARTMENT OF TRANSPORTATION
Testing Service Corporation
STRUCTURE BORING LOG

Page 1 of 1
Date 7/9/02

ROUTE FAP 774 (IL 32/33) DESCRIPTION Northwest of Ford Avenue, Effingham, Illinois

SECT. 107WRS-1 STRUCT. NO. DRILLED BY B. Williamson

COUNTY Effingham LOCATION Douglas Township S. 18 TWP. T8N RNG. P6E

Boring No. B-101
Station 1033+00
Offset 62.00 ft LI

Surface Elev. 583.33 ft

DEPTH (ft)	BLOW COUNT (S)	QUICKNESS (Q _u) (pcf)	WATER (%)	DEPTH (ft)	BLOW COUNT (S)	QUICKNESS (Q _u) (pcf)	WATER (%)
2	P	15		10		12	
4	4.5+			29			
7				36			
8	P	12		34		14	
8	4.5+			45			
7				60.4"			
5	P	12		10		12	
7	4.5+			19			
8				21			
500.83				50.4"			
5	P	14					
8	4.5+						
10							
579.83							
10	P	7					
30	4.5+						
47							
8	P	10					
11	4.5+						
17							
7	P	12					
14	4.5+						
19							
572.33							
9		11					
9							
13							
8		12					
14							
23							
198.33							

Surface Water Elev. _____
Groundwater Elev. when drilling _____ DRY
at Completion _____ DRY
after _____ Hrs. _____

Very dense light brown LOAM/SANDY LOAM, moist

Very dense gray weathered SILTSTONE

See STRUCTURE BORING LOG for core information to termination depth of boring.

Hard brown SILTY CLAY LOAM, moist

Hard brown SILTY LOAM, moist

Hard brown SILTY LOAM, moist

Firm to dense light brown SILTY LOAM/SILT, moist

SPT, (N) = Sum of last two blow values in sample. (Q_u) = Blows S = Shear P = Penetration Test Stations, Depths, Offset, and Elevations are in Feet.

ILLINOIS DEPARTMENT OF TRANSPORTATION
Testing Service Corporation
STRUCTURE ROCK CORING LOG

Page 1 of 1
Date 7/9/02

ROUTE FAP 774 (IL 32/33) DESCRIPTION Northwest of Ford Avenue, Effingham, Illinois

SECT. 107WRS-1 STRUCT. NO. DRILLED BY B. Williamson

COUNTY Effingham

Boring No. B-101 Core Type NX Core Barrel
Station 1033+00 Core Diameter 2.34 in
Offset 62.00 ft LI Core Length 3 ft

Surface Elev. 583.33 ft

Top Elev. (ft)	Core Run (ft)	RECOVERY (%)	R D (%)	CORE (Min/ft)	COMP (pcf)
583.33	1	88	51	3	283
583.33					198
553.33					

Gray SANDSTONE with interbedded SHALE

End of Boring at 40.0'

Color pictures of the cores _____
Cores will be stored for examination until _____

ILLINOIS DEPARTMENT OF TRANSPORTATION
Testing Service Corporation
STRUCTURE BORING LOG

Page 1 of 1
Date 7/10/02

ROUTE FAP 774 (IL 32/33) DESCRIPTION Northwest of Ford Avenue, Effingham, Illinois

SECT. 107WRS-1 STRUCT. NO. DRILLED BY B. Williamson

COUNTY Effingham LOCATION Douglas Township S. 18 TWP. T8N RNG. P6E

Boring No. B-102
Station 1031+75
Offset 78.00 ft LI

Surface Elev. 588.10 ft

DEPTH (ft)	BLOW COUNT (S)	QUICKNESS (Q _u) (pcf)	WATER (%)	DEPTH (ft)	BLOW COUNT (S)	QUICKNESS (Q _u) (pcf)	WATER (%)
2	P	8		14		13	
4	4.5+			20			
4				32			
5	P	12		13		14	
5	4.5+			23			
8				38			
4	P	10		14		19	
7	4.5+			21			
12				39			
588.10				50.4"			
14	P	8		10		15	
26	4.5+			23			
50				36.4"			
577.60							
10	S	9					
17	14.0						
27							
17	P	9					
39	4.5+						
44							
572.10							
18	P	8					
38	4.5+						
45							
5	P	7					
20	4.5+						
30							
564.60							
16	P	8					
23	4.5+						
36							
554.60							
10		15					
33							
50							
588.10							

Very dense gray SILTY LOAM/LOAM, moist

See STRUCTURE BORING LOG for core information to termination depth of boring.

Hard brown SILTY CLAY LOAM, moist

Hard gray SILTY CLAY LOAM, moist

Very dense gray SILTY LOAM/LOAM, moist

SPT, (N) = Sum of last two blow values in sample. (Q_u) = Blows S = Shear P = Penetration Test Stations, Depths, Offset, and Elevations are in Feet.

SOIL BORINGS LOGS
ILLINOIS ROUTE 32/33
F.A.P. ROUTE 774
SECTION 107 WRS-1, 107BY,
107BY-1 & 107B-2
EFFINGHAM COUNTY
RETAINING WALL
STA. 1026+03.00 LT. TO STA. 1033+86.00 LT.
STRUCTURE NUMBER 025-W008

STATE OF ILLINOIS
DEPARTMENT OF TRANSPORTATION

F.A.P. RTE.	SECTION	COUNTY	TOTAL SHEETS	SHEET NO.
774	(107,107Z) LS	EFFINGHAM	22	19
FED. ROAD DIST. NO.		ILLINOIS	FED. AID PROJECT	

SHEET NO. 9
OF 12 SHEETS

CONTRACT NO. 74128

Testing Service Corporation
STRUCTURE ROCK CORING LOG

Page 1 of 1
Date 7/10/02

ROUTE FAP 774 (IL 32/33) DESCRIPTION Northwest of Ford Avenue, Effingham, Illinois

SECT. 107WRS-1 STRUCT. NO. DRILLED BY B. Williamson

COUNTY Effingham LOCATION Douglas Township S. 12, TWP. 13N, R. 8E

Boring No. B-102 Core Type NX Core Barrel
Station 1031+75 Core Diameter 2.34 in
Offset 79.000 LT Core Length 3 ft

Surface Elev. 588.10 ft

Top Elev. #	Coring Notes and Rock Description	Core Run (#)	RECOVER Y (%)	R Q (%)	CORE TIME (Min/ft)	COMP. STRENGTH (tsf)
553.10	Gray SANDSTONE with interbedded SHALE	1	97	49	3	
548.16	End of Boring at 40.0'					

Color pictures of the cores _____

Cores will be stored for examination until _____

ILLINOIS DEPARTMENT OF TRANSPORTATION
Testing Service Corporation
STRUCTURE BORING LOG

Page 1 of 1
Date 7/11/02

ROUTE FAP 774 (IL 32/33) DESCRIPTION Northwest of Ford Avenue, Effingham, Illinois

SECT. 107WRS-1 STRUCT. NO. DRILLED BY S. Williamson

COUNTY Effingham LOCATION Douglas Township S. 12, TWP. 13N, R. 8E

Boring No. B-103
Station 1032+22
Offset 78.000 LT

Surface Elev. 584.68 ft

DEPTH (ft)	LOG	QU	W	Surface Water Elev. when drilling	DEPTH (ft)	LOG	QU	W	Groundwater Elev. at Completion
0	Hard brown SILTY CLAY LOAM, moist to damp	2	P 11	588.2	0	B 29	4	4.5+	DRY
4		4	4.5+		4	B 36	4	3.8	
8		8	8		8	B 12	8	4.5+	
13		13	4.5+		13	B 9	13	9.0	
14		14			14	B 11	14		
15		15	P 7		15	B 5	15		
25		25	4.5+		25	B 10	25		
25		25			25	B 18	25	5.5	
35		35	B 9		35	B 14	35	5.2	
35		35	9.0		35	B 16	35		
35		35	21		35	B 13	35	7.2	
35		35			35	B 18	35		
573.69	Hard brown SILTY LOAM, damp	7	P 5		573.69	B 18	573.69		
573.69		20	4.5+		573.69	B 14	573.69		
573.69		42			573.69	B 10	573.69		
571.18	Hard gray SILTY CLAY LOAM, moist	4	B 13		571.18	B 14	571.18		
571.18		9	8.8		571.18	B 10	571.18		
571.18		15			571.18	B 14	571.18		
568.08	Firm gray SAND, wet	5			568.08	B 10	568.08		
568.08		7			568.08	B 14	568.08		
568.08		10			568.08	B 10	568.08		
567.18	Hard gray SILTY CLAY LOAM, moist	8	B 14		567.18	B 14	567.18		
567.18		13	7.2		567.18	B 14	567.18		
567.18		16			567.18	B 14	567.18		
567.18		18			567.18	B 14	567.18		
567.18		18	5.5		567.18	B 14	567.18		
567.18		14			567.18	B 14	567.18		
568.08		4	B 16		568.08	B 14	568.08		
568.08		8	5.2		568.08	B 14	568.08		
568.08		13			568.08	B 14	568.08		

End of Boring at 35.0'

SPT. (N) = Sum of last two blow values in sample. (Qu) B=Bulge S=Shear P=Penetration Test Stations, Depths, Offset, and Elevations are in Feet.

ILLINOIS DEPARTMENT OF TRANSPORTATION
Testing Service Corporation
STRUCTURE BORING LOG

Page 1 of 1
Date 7/11/02

ROUTE FAP 774 (IL 32/33) DESCRIPTION Northwest of Ford Avenue, Effingham, Illinois

SECT. 107WRS-1 STRUCT. NO. DRILLED BY B. Williamson

COUNTY Effingham LOCATION Douglas Township S. 12, TWP. 13N, R. 8E

Boring No. B-104
Station 1025+56
Offset 70.000 LT

Surface Elev. 591.09 ft

DEPTH (ft)	LOG	QU	W	Surface Water Elev. when drilling	DEPTH (ft)	LOG	QU	W	Groundwater Elev. at Completion
0	Hard brown SILTY LOAM, moist	4	P 19	588.2	0	B 11	4	4.5+	DRY
4		4	4.5+		4	B 15	4	8.1	
5		5			5	B 15	5	4.2	
9		9			9	B 15	9	2.9	
11		11	P 13		11	B 15	11		
13		13	4.5+		13	B 15	13	4.2	
17		17			17	B 15	17		
17		17	P 11		17	B 15	17		
17		17	4.5+		17	B 15	17	4.2	
583.09	Hard brown SILTY CLAY LOAM, moist	6	P 10		583.09	B 15	583.09		
583.09		12	4.5+		583.09	B 15	583.09		
583.09		18			583.09	B 15	583.09		
580.69	Hard brown SILTY LOAM, moist	16	P 8		580.69	B 15	580.69		
580.69		20	4.5+		580.69	B 15	580.69		
580.69		20			580.69	B 15	580.69		
577.29	Very dense brown SAND, moist	14	P 10		577.29	B 15	577.29		
577.29		39	4.5+		577.29	B 15	577.29		
577.29		50"			577.29	B 15	577.29		
575.69	Hard brown SILTY CLAY LOAM, moist	17			575.69	B 15	575.69		
575.69		22	7		575.69	B 15	575.69		
575.69		46			575.69	B 15	575.69		
575.69		39	8		575.69	B 15	575.69		
575.69		50.5"			575.69	B 15	575.69		
570.69	Hard gray SILTY CLAY LOAM, damp	14	P 7		570.69	B 15	570.69		
570.69		41	4.5+		570.69	B 15	570.69		
570.69		40			570.69	B 15	570.69		
568.09	Very dense brown SILTY LOAM, damp	4			568.09	B 15	568.09		
568.09		47	8		568.09	B 15	568.09		
568.09		50.5"			568.09	B 15	568.09		
568.09		13			568.09	B 15	568.09		

End of Boring at 35.0'

SPT. (N) = Sum of last two blow values in sample. (Qu) B=Bulge S=Shear P=Penetration Test Stations, Depths, Offset, and Elevations are in Feet.

SOIL BORINGS LOGS
ILLINOIS ROUTE 32/33
F.A.P. ROUTE 774
SECTION 107 WRS-1, 107BY,
107BY-1 & 107B-2
EFFINGHAM COUNTY
RETAINING WALL
STA. 1026+03.00 LT. TO STA. 1033+86.00 LT.
STRUCTURE NUMBER 025-W008

STATE OF ILLINOIS
DEPARTMENT OF TRANSPORTATION

F.A.P. RTE.	SECTION	COUNTY	TOTAL SHEETS	SHEET NO.
774	*	EFFINGHAM	22	20
FED. ROAD DIST. NO.		ILLINOIS FED. AID PROJECT	SHEET NO. 10 OF 12 SHEETS	

CONTRACT NO. _____

Testing Service Corporation
STRUCTURE ROCK CORING LOG

Page 1 of 1
Date 7/11/02

ROUTE FAP 774 (IL 32/33) DESCRIPTION Northwest of Ford Avenue, Effingham, Illinois

SECT. 107WRS-1 STRUCT. NO. _____ DRILLED BY B. Williamson

COUNTY Effingham

Boring No. B-104 Core Type NX Core Barrel
 Station 1029+50 Core Diameter 2.34 in
 Offset 70.00ft Lt Core Length 6 ft

Surface Elev. 591.09 ft

Top Elev. ft	Coring Notes and Rock Description	Core Run (ft)	RECOVER Y (%)	R (%)	CORE TIME (Min/ft)	COMP. S T R N G T H (1st)
541.09	Gray SANDSTONE with interbedded SHALE	1	100	88	3.5	218
636.09	End of boring at 56.0'					234

Color pictures of the cores _____
 Cores will be stored for examination until _____

ILLINOIS DEPARTMENT OF TRANSPORTATION
Testing Service Corporation
STRUCTURE BORING LOG

Page 1 of 1
Date 7/12/02

ROUTE FAP 774 (IL 32/33) DESCRIPTION Northwest of Ford Avenue, Effingham, Illinois

SECT. 107WRS-1 STRUCT. NO. _____ DRILLED BY B. Williamson

COUNTY Effingham LOCATION Douglas Township S. 18, TWP. T8N R9E R8E

Boring No. B-105 Station 1029+00 Offset 70.00ft Lt

Surface Elev. 588.46 ft

Surface Water Elev. Groundwater Elev. when drilling at Completion after _____ Hrs.	D E P T H	B L O W S	Cu test	W %	D E P T H	B L O W S	Cu test	W %
Hard light brown SILTY LOAM, moist	5	7	4.5+	11	4	5	20	
Hard brown SILTY LOAM, moist to damp	8	10	4.5+	13	5	7	14	
Hard light brown SILTY LOAM, damp	10	20	4.5+	9	5	11	11	
Firm brown gray SILTY LOAM/LOAM, moist	17	25	11.5	8	22	26	8	
Very dense gray SILTY LOAM/LOAM, moist	21	28	9.3	8	10	45	10	
Very dense brown SAND, dry	29	43						
Hard gray SILTY CLAY LOAM, moist	8	13	7.8	12				
	4	11	7.2					

See STRUCTURE CORING LOG for core information to termination depth of boring.

SPT. (N) = Sum of last two blow values in sample. (Cu) B=Blow S=Shear P=Penetration Test Stations, Depths, Offset, and Elevations are in Feet

Testing Service Corporation
STRUCTURE ROCK CORING LOG

Page 1 of 1
Date 7/12/02

ROUTE FAP 774 (IL 32/33) DESCRIPTION Northwest of Ford Avenue, Effingham, Illinois

SECT. 107WRS-1 STRUCT. NO. _____ DRILLED BY B. Williamson

COUNTY Effingham

Boring No. B-105 Core Type NX Core Barrel
 Station 1029+00 Core Diameter 2.34 in
 Offset 70.00ft Lt Core Length 17 ft

Surface Elev. 588.46 ft

Top Elev. ft	Coring Notes and Rock Description	Core Run (ft)	RECOVER Y (%)	R (%)	CORE TIME (Min/ft)	COMP. S T R N G T H (1st)
548.46	Gray SANDSTONE with interbedded SHALE	1	100	43	3	255
539.46	Gray SANDSTONE with interbedded SHALE	2	86	69	2.5	170

Color pictures of the cores _____
 Cores will be stored for examination until _____

SOIL BORINGS LOGS
ILLINOIS ROUTE 32/33
F.A.P. ROUTE 774
SECTION 107 WRS-1, 107BY,
107BY-1 & 107B-2
EFFINGHAM COUNTY
RETAINING WALL
STA. 1026+03.00 LT. TO STA. 1033+86.00 LT.
STRUCTURE NUMBER 025-W008

STATE OF ILLINOIS
DEPARTMENT OF TRANSPORTATION

F.A.P. RTE.	SECTION	COUNTY	TOTAL SHEETS	SHEET NO.
774	(107, 107B) LS	EFFINGHAM	22	21
FED. ROAD DIST. NO.		ILLINOIS	FED. AID PROJECT	OF 12 SHEETS

CONTRACT NO. 74128

ILLINOIS DEPARTMENT OF TRANSPORTATION
Testing Service Corporation
STRUCTURE BORING LOG

Page 1 of 1
Date 7/15/02

ROUTE FAP 774 (IL 32/33) DESCRIPTION Northwest of Ford Avenue, Effingham, Illinois

SECT. 107WRS-1 STRUCT. NO. DRILLED BY B. Williamsen

COUNTY Effingham LOCATION Douglas Township S. 18, TWP. T8N, R8E

Boring No. B-106
Station 1027+98
Offset 70.00R LL

Surface Elev. 587.14 ft

DEPTH	TEST	QU	W	Surface Water Elev.	DEPTH	TEST	QU	W
ft		tsf	%	when drilling	ft		tsf	%
5	P	8		DRY	14	S	9	
6		4.5+		DRY	23		7.0	
11					29			
581.14					589.84			
5	S	14			10	B	17	
7		6.1			10		5.0	
8					10			
581.14					590.14			
2	S	14			18		17	
5		4.1			22			
8					34			
581.14					593.64			
7	P	8			13		14	
17		4.5+			25			
17					50.5'			
581.14					595.04			
7	P	8			22		15	
16		4.5+			27			
19					50.0'			
581.14					596.54			
8	S	8			46.0'		6	
15		6.8						
22								
581.14					597.14			
7	P	8						
19		4.5+						
24								
581.14					598.14			
11		7						
30								
45								
581.14					599.14			
14		15						
26								
32								
581.14					600.14			
13		12						
29								
44								

SPT (N) = Sum of last two blow values in sample. (Qu) B=Bulge S=Shear P=Penetration Test
Stations, Depths, Offset, and Elevations are in Feet

Testing Service Corporation
STRUCTURE ROCK CORING LOG

Page 1 of 1
Date 7/15/02

ROUTE FAP 774 (IL 32/33) DESCRIPTION Northwest of Ford Avenue, Effingham, Illinois

SECT. 107WRS-1 STRUCT. NO. DRILLED BY B. Williamsen

COUNTY Effingham

Boring No. B-106 Core Type NX Core Barrel
Station 1027+98 Core Diameter 2.34 in
Offset 70.00R Lt Core Length 20 ft

Surface Elev. 587.14 ft

Top Elev. ft	Coring Notes and Rock Description	Core Run (ft)	RECOVERY (%)	R Q (%)	CORE TIME (Min/ft)	COMP. STRNGTH (tsf)
587.14	Gray SANDSTONE with interbedded SHALE	1	85	45	2.5	
584.30						
581.38						
578.39						
575.39						
573.88						
571.88						
569.38						
567.14	Gray SANDSTONE with interbedded SHALE	2	97	50	3	
565.0						
562.38						
560.14						
557.14						
555.0						
552.38						
550.14						
547.14						
545.0						
542.38						
540.14						
537.14						
535.0						
532.38						
530.14						
527.14						

End of Boring at 60.0'

Color pictures of the cores

Cores will be stored for examination until

ILLINOIS DEPARTMENT OF TRANSPORTATION
Testing Service Corporation
STRUCTURE BORING LOG

Page 1 of 1
Date 7/16/02

ROUTE FAP 774 (IL 32/33) DESCRIPTION Northwest of Ford Avenue, Effingham, Illinois

SECT. 107WRS-1 STRUCT. NO. DRILLED BY B. Williamsen

COUNTY Effingham LOCATION Douglas Township S. 18, TWP. T8N, R8E

Boring No. B-107
Station 1027+62
Offset 70.00R LL

Surface Elev. 587.36 ft

DEPTH	TEST	QU	W	Surface Water Elev.	DEPTH	TEST	QU	W
ft		tsf	%	when drilling	ft		tsf	%
7	P	8		DRY	6	B	18	
12		4.5+		DRY	10		2.6	
10					11			
584.30					589.38			
4	S	20			7	B	18	
5		6.4			10		4.5	
7					13			
581.38					593.18			
2	P	12			7	B	22	
4		3.75			9		2.5	
8					13			
578.39					593.18			
1		12			10		17	
4					23			
8					24			
575.39					593.18			
13		8			15		18	
30					24			
34					26			
573.88					593.18			
7	P	8			50.5'		7	
17		4.5+						
15								
571.88					597.38			
13		7						
31								
42								
569.38					598.38			
5	B	11						
7		7.0						
12								
567.14					599.38			
6	P	6						
9		4.5+						
15								
562.38					600.38			

SPT (N) = Sum of last two blow values in sample. (Qu) B=Bulge S=Shear P=Penetration Test
Stations, Depths, Offset, and Elevations are in Feet

SOIL BORINGS LOGS
ILLINOIS ROUTE 32/33
F.A.P. ROUTE 774
SECTION 107 WRS-1, 107BY,
107BY-1 & 107B-2
EFFINGHAM COUNTY
RETAINING WALL
STA. 1026+03.00 LT. TO STA. 1033+86.00 LT.
STRUCTURE NUMBER 025-W008

STATE OF ILLINOIS
DEPARTMENT OF TRANSPORTATION

F.A.P. RTE.	SECTION	COUNTY	TOTAL SHEETS	SHEET NO.
774	(107, 107Z) LS	EFFINGHAM	22	22
FED. ROAD DIST. NO.		ILLINOIS FED. AID PROJECT	SHEET NO. 12 OF 12 SHEETS	

CONTRACT NO. 74128

Testing Service Corporation
STRUCTURE ROCK CORING LOG

Page 1 of 1
Date 7/18/02

ROUTE FAP 774 (IL 32/33) DESCRIPTION Northwest of Ford Avenue, Effingham, Illinois
SECT. 107WRS-1 STRUCT. NO. DRILLED BY B. Williamson
COUNTY Effingham

Boring No. B-107 Core Type NX Core Barrel
Station 1026+98 Core Diameter 2.34 in
Offset 79.00ft LT Core Length 20 ft
Surface Elev. 587.38 ft

Top Elev. ft	Coring Notes and Rock Description	Core Run (#)	RECOVERY (%)	R. Q. D. (%)	CORE TIME (Min/ft)	COMP. STRENGTH (tsf)
547.38	Gray SANDSTONE with interbedded SHALE	1	99	43	3	
537.38	Gray SANDSTONE with interbedded SHALE	2	95	51	3	188

End of Boring at 80.0'

Color pictures of the cores

Cores will be stored for examination until

ILLINOIS DEPARTMENT OF TRANSPORTATION
Testing Service Corporation
STRUCTURE BORING LOG

Page 1 of 1
Date 7/18/02

ROUTE FAP 774 (IL 32/33) DESCRIPTION Northwest of Ford Avenue, Effingham, Illinois
SECT. 107WRS-1 STRUCT. NO. DRILLED BY B. Williamson
COUNTY Effingham LOCATION Douglas Township S. 16. TWP. T8N. R8E. R8E

Boring No. B-108
Station 1026+98
Offset 89.00ft LT
Surface Elev. 559.22 ft R
Surface Water Elev. _____
Groundwater Elev. when drilling at Completion 845.7 ft
after hrs. _____

DEPTH (ft)	BLOW COUNT (S, P, G)	Soil Description
7-11	P 7 S 4.5+	Hard light brown SILTY LOAM, damp
8-12	P 9 S 4.5+	Hard light brown SILTY LOAM, damp
10-15	S 11 P 4.6	Hard light brown SILTY LOAM, damp
10-14	S 11 P 4.6	Firm light brown SILTY LOAM, moist
17-15	S 12 P 4.6	Dense brown SANDY LOAM, saturated
23-41	S 12 P 4.6	Very dense gray SILTY LOAM, moist

SPT. (N) = Sum of last two blow values in sample. (Gu) = Builge S=Shear P=Penetration Test Stations, Depths, Offset, and Elevations are in Feet

Testing Service Corporation
STRUCTURE ROCK CORING LOG

Page 1 of 1
Date 7/18/02

ROUTE FAP 774 (IL 32/33) DESCRIPTION Northwest of Ford Avenue, Effingham, Illinois
SECT. 107WRS-1 STRUCT. NO. DRILLED BY B. Williamson
COUNTY Effingham

Boring No. B-108 Core Type NX Core Barrel
Station 1026+98 Core Diameter 2.34 in
Offset 89.00ft LT Core Length 10 ft
Surface Elev. 559.22 ft

Top Elev. ft	Coring Notes and Rock Description	Core Run (#)	RECOVERY (%)	R. Q. D. (%)	CORE TIME (Min/ft)	COMP. STRENGTH (tsf)
539.22	Gray SANDSTONE with interbedded SHALE	1	82	40	2.5	
529.22	End of Boring at 30.0'					

Color pictures of the cores

Cores will be stored for examination until

SOIL BORINGS LOGS
ILLINOIS ROUTE 32/33
F.A.P. ROUTE 774
SECTION 107 WRS-1, 107BY,
107BY-1 & 107B-2
EFFINGHAM COUNTY
RETAINING WALL
STA. 1026+03.00 LT. TO STA. 1033+86.00 LT.
STRUCTURE NUMBER 025-W008