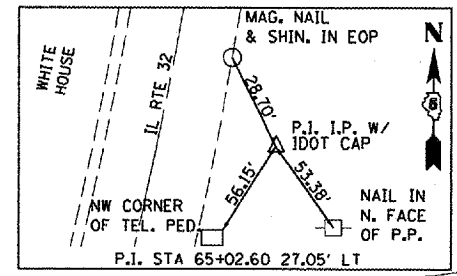


F.A.P. RTE.	SECTION	COUNTY	TOTAL SHEETS	SHEET NO.
758	3BR-1	MOULTRIE	24	7

STA. 65+00.00 TO STA. 71+00.00  
 FED. ROAD DIST. NO. ILLINOIS FED. AID PROJECT

BENCH MARK: CHISELED "□" ON NORTHEAST WINGWALL OF S.N. 070-0033, ELEV= 650.32 T14N, R5E, SEC 3 3RD P.M.



PROPOSED PROJECT BEGINS STA. 67+10.00

REMOVE EXISTING CULVERT RT STA. 66+92.30 1 EACH

TRAFFIC BARRIER TERMINAL TYPE 6A (TYP. 4 LOCATIONS)

GUARDRAIL REMOVAL (TYP.)

TIMBER LINE

S.N. 070-0033 PRECAST PRESTRESSED CONCRETE DECK BEAMS (21" DEPTH) @ STA. 68+26.50 LENGTH = 48'-40" BK TO BK ABUT., HORIZ. CLR. = 32'-0" SKEW = 30° RT. FWD. SEE BRIDGE PLANS

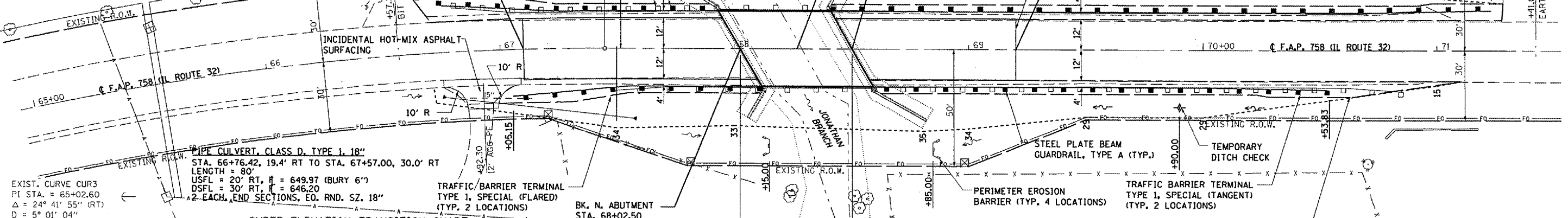
SAWCUT INCLUDED IN COST OF HOT-MIX ASPHALT SURFACE REMOVAL (TYP. EACH END OF JOB)

PROPOSED PROJECT ENDS STA. 69+20.00

BK. S. ABUTMENT STA. 68+50.50 ELEV. 649.90

CONSTRUCTION LIMITS

TIMBER LINE



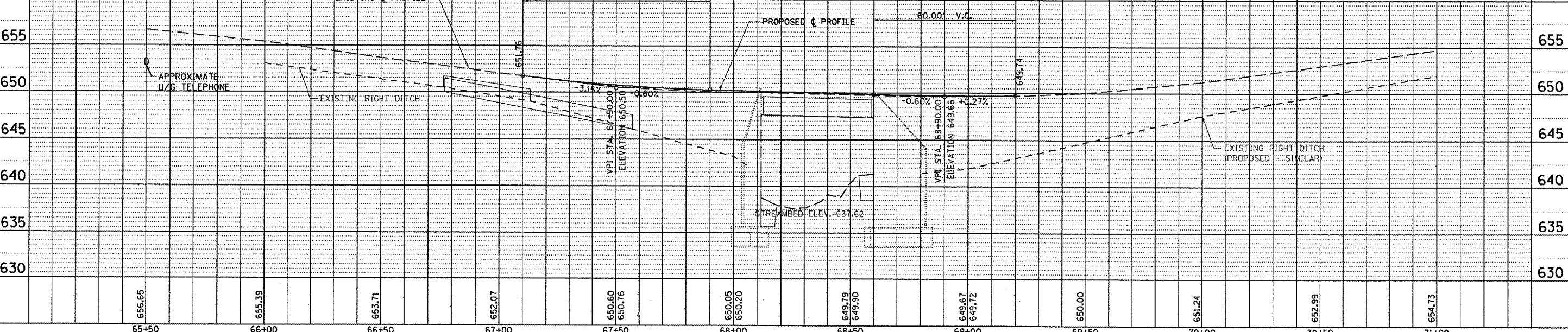
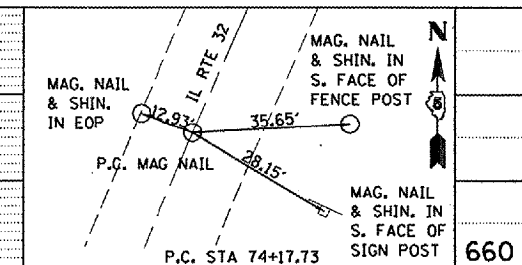
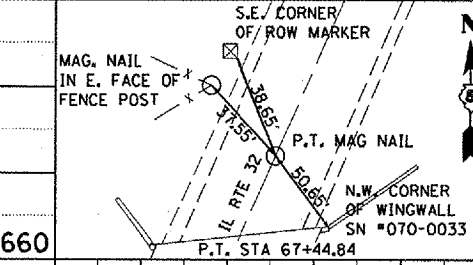
EXIST. CURVE CUR3  
 PI STA. = 65+02.60  
 $\Delta = 24^\circ 41' 55''$  (RT)  
 $D = 5^\circ 01' 04''$   
 $R = 1,141.88'$   
 $T = 250.00'$   
 $L = 492.23'$   
 $E = 27.05'$   
 S.E. RUN = 8.0%  
 P.C. STA. = 62+52.60  
 P.T. STA. = 67+44.84

SUPER ELEVATION TRANSITION CHART

STATION	PR SLOPE		LT EOP		EX		PR		RT EOP		REMARKS
	LT	RT	EX	PR	EX	PR	EX	PR			
67+10.00	+3.58	-4.92	652.19	652.19	651.76	651.76	651.17	651.17	651.17	651.17	MATCH EXISTING
67+50.00	+1.00	-3.17	650.70	650.88	650.60	650.76	650.31	650.38	650.38	650.38	
67+90.00	-1.50	-1.50	650.05	650.08	650.09	650.26	649.85	650.08	650.08	650.08	NORMAL CROWN

NOTE: SOME QUANTITIES CONTAINED HEREIN ARE OUTSIDE THE PROJECT LIMITS

EARTH SHOULDER SHOULDER WIDENING IN ACCORDANCE WITH STD. 630301 (TYP. 4 LOCATIONS)



DATE: \_\_\_\_\_ BY: \_\_\_\_\_  
 PLAN: \_\_\_\_\_  
 PROFILE: \_\_\_\_\_  
 PLOT DATE = 10/20/2006  
 FILE NAME = c:\proj\pca\06052003\08\submit\10\_13\_06\p20.ppt  
 USER NAME = pcp20