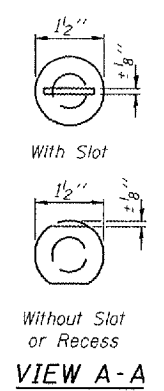
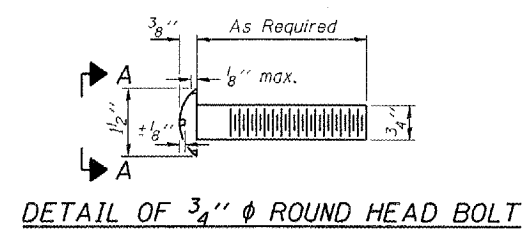
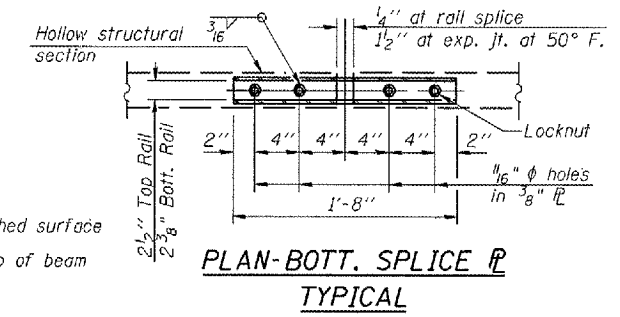
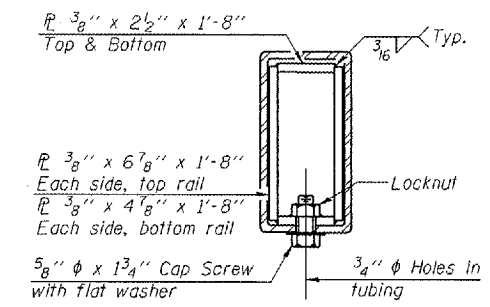
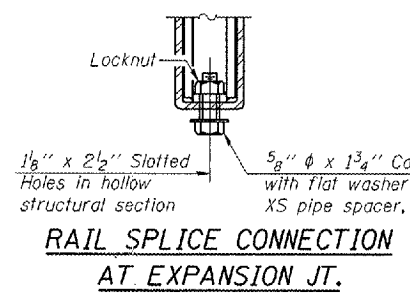


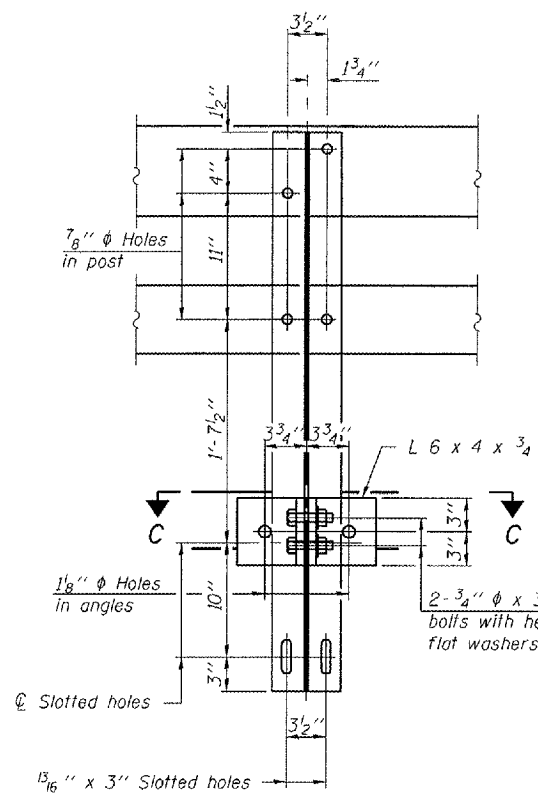
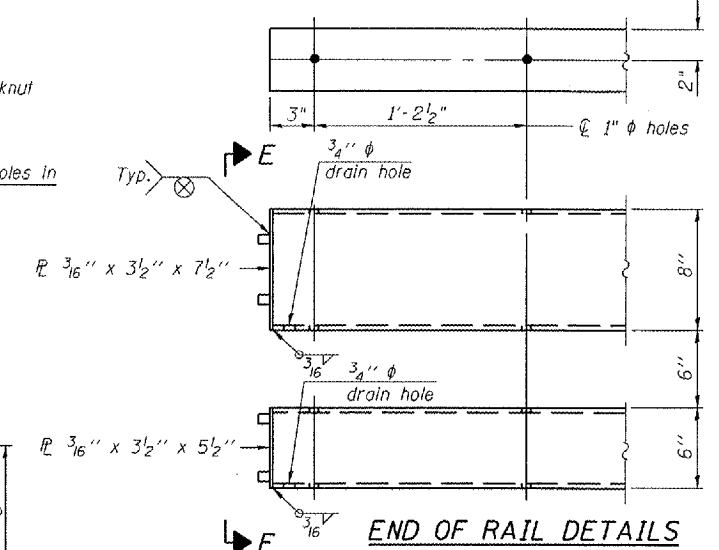
PROJECT NO.	SECTION	COUNTY	SHEET	DATE	SHEET NO. 2
758	3BR-1	MOULTRIE	24	9	6 SHEETS
FED. ROAD DIST. NO.	ILLINOIS	FED. AID PROJECT			
Contract #74147					



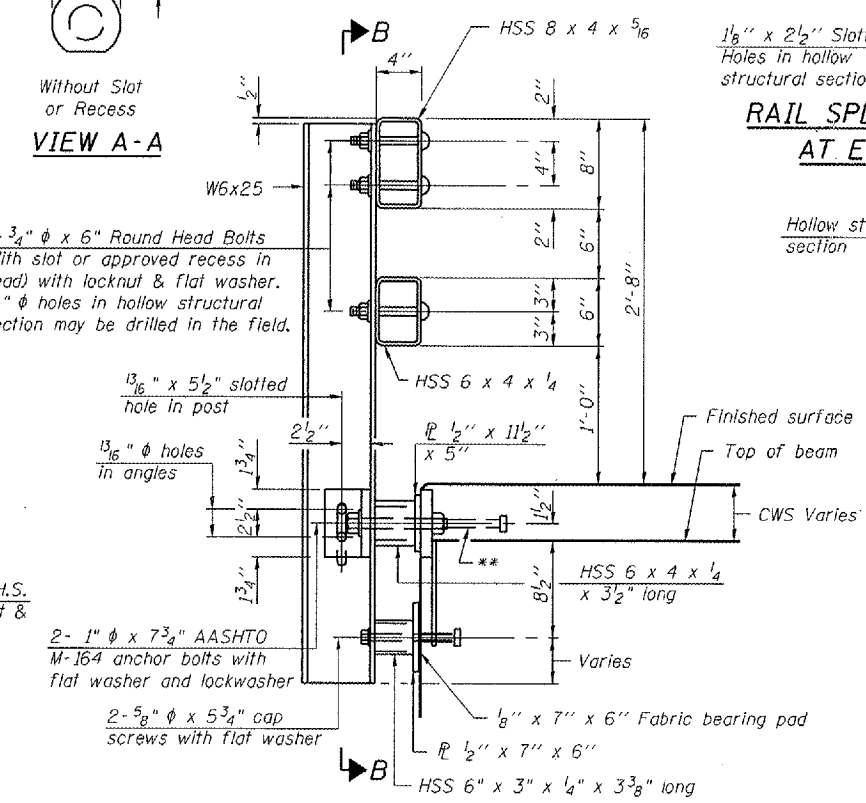
4- 3/4"  $\phi$  x 6" Round Head Bolts (With slot or approved recess in head) with locknut & flat washer. 7/8"  $\phi$  holes in hollow structural section may be drilled in the field.



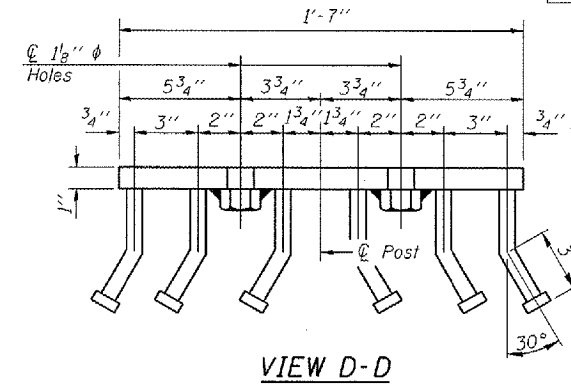
SECTION AT RAIL SPLICE



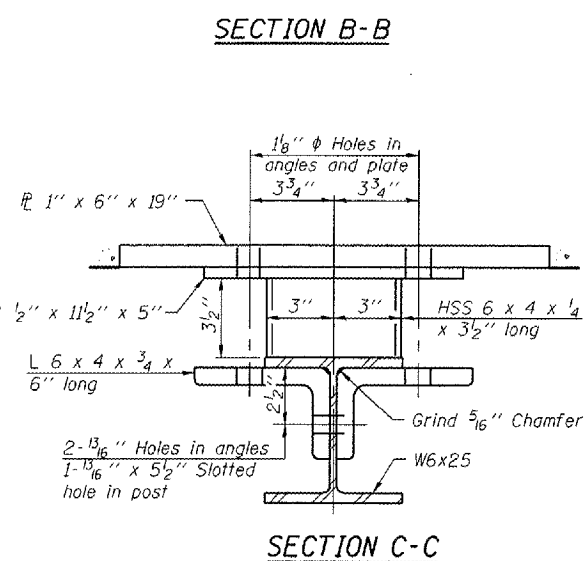
SECTION B-B



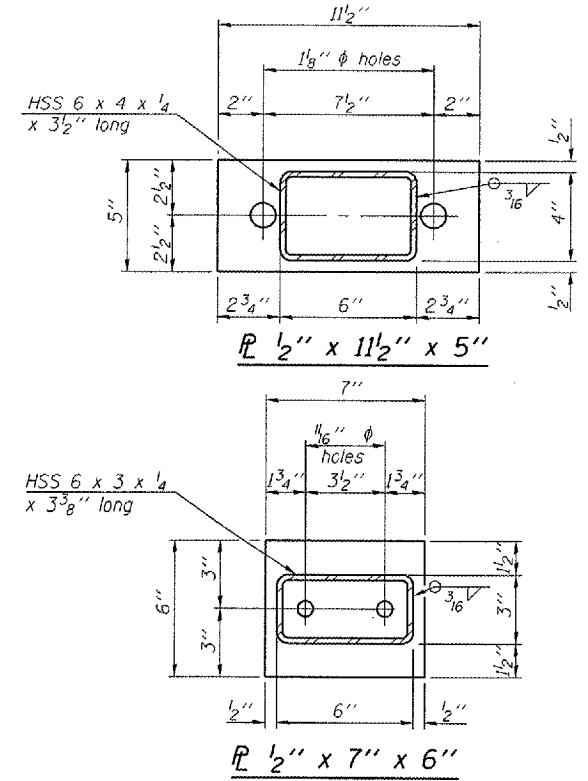
SECTION AT RAIL POST



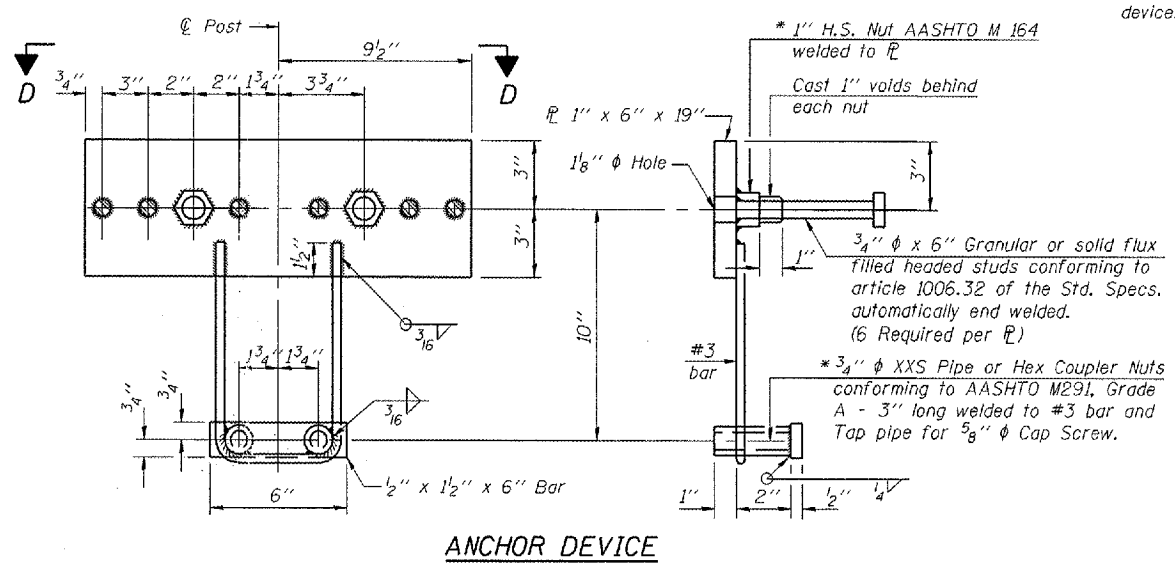
VIEW D-D



SECTION C-C



ANCHOR DEVICE



Notes:  
 All field drilled holes shall be coated with an approved zinc rich paint before erection.  
 For multi-span bridges, sufficient 1/4" x 6" x 1'-2" galvanized steel shims shall be provided to align rail between adjacent spans. Cost included with Steel Bridge Rail, Type SM.  
 Steel rail elements shall be galvanized according to Article 509.05 of the Standard Specifications.  
 \*\* The studs of the anchor device shall be placed below the top reinforcement bars and the outermost longitudinal reinforcement bar shall be placed directly above the studs of the rail post anchor device.

BILL OF MATERIAL

Item	Unit	Quantity
Steel Railing, Type SM	Foot	97

ILLINOIS DEPARTMENT OF TRANSPORTATION  
 TYPE SM  
 STEEL BRIDGE RAIL SIDE MOUNTED WITH CONCRETE WEARING SURFACE  
 IL ROUTE 32 OVER JONATHAN BRANCH  
 F.A.P. ROUTE 758 SECTION 3BR-1  
 MOULTRIE COUNTY  
 STATION 68+26.50  
 STRUCTURE NO. 070-0033

R-34CWS

11-1-06

(6'-3" Maximum Post Spacing) (5" minimum to 7 1/8" maximum CWS thickness)

\* Threaded areas shall be plugged or blocked off during casting of beam. Galvanized after fabrication.