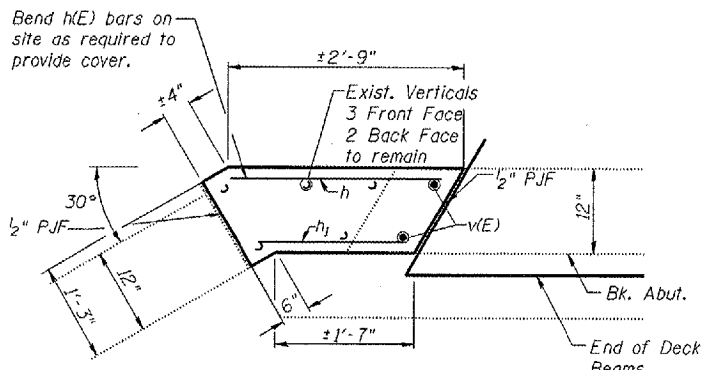


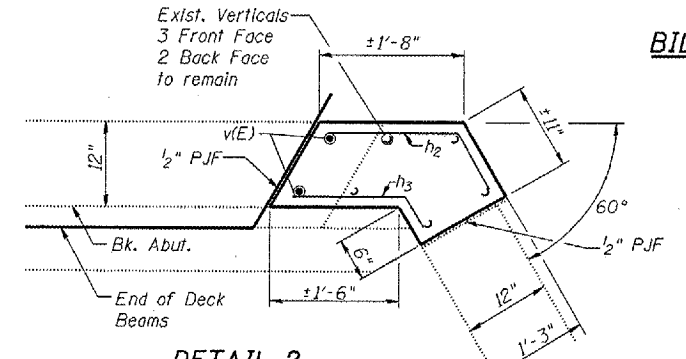
PLAN

(Wearing Surface not shown)



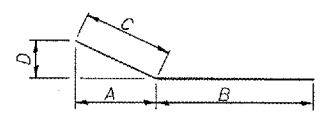
DETAIL 1

At NE Wingwall
At SW Wingwall



DETAIL 2

At NW Wingwall
At SE Wingwall



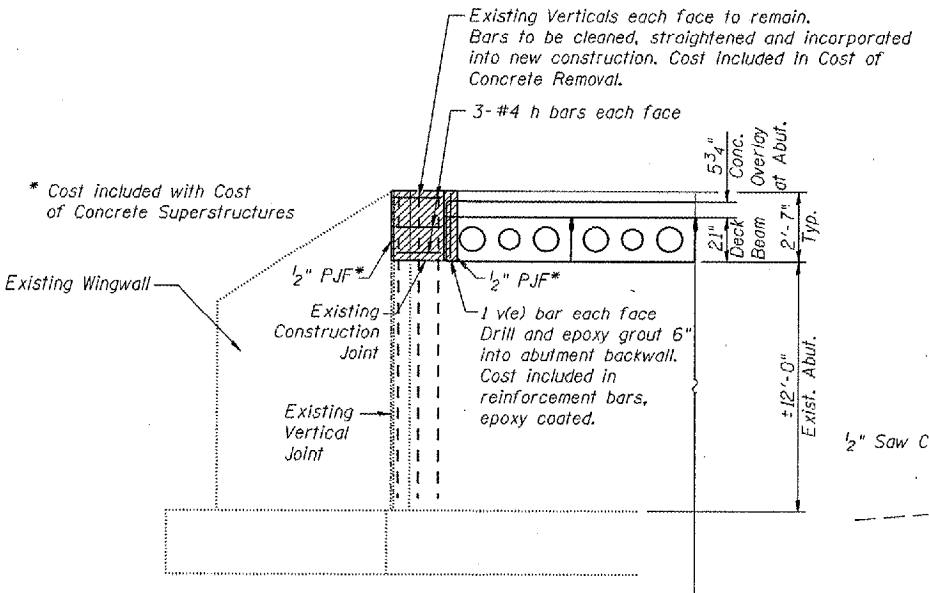
BAR	A	B	C	D
h2(E)	4 3/8"	1'-6"	9"	7 7/8"
h3(E)	2 1/2"	1'-4"	5"	4 3/8"

BILL OF MATERIAL (BOTH ABUT'S)

BAR NO.	SIZE	LENGTH	SHAPE
h1(E)	#4	2'-7"	—
h2(E)	#4	1'-8"	—
h3(E)	#4	2'-3"	—
h3(E)	#4	1'-9"	—
v(E)	#4	3'-0"	—
Reinforcement Bars, Epoxy Coated			Pound 50
Concrete Removal			Cu. Yd. 0.8
Concrete Structures			Cu. Yd. 1.0

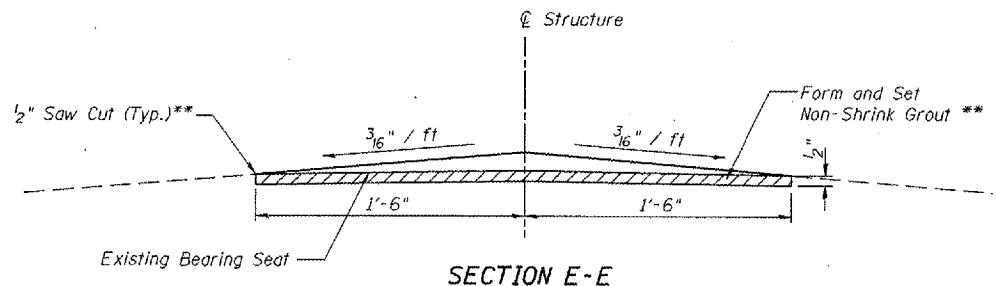
NOTES

Hatched areas indicate concrete removal. These areas are to be poured after concrete wearing surface is in place and cured.
Reinforcement bars designated (E) shall be epoxy coated.
See sheet 4 of 6 for Section A-A.



SECTION B-B

TYPICAL ELEVATION AT HATCHED AREA



SECTION E-E

BEAM SEAT ADJUSTMENT

** Cost included with Precast Prestressed Concrete Deck Beams

ILLINOIS DEPARTMENT OF TRANSPORTATION

ABUTMENTS

IL ROUTE 32 OVER
JONATHAN BRANCH
F.A.P. ROUTE 758 SECTION 3BR-1
MOULTRIE COUNTY
STATION 68+26.50
STRUCTURE NO. 070-0033

DATE: MARCH 2006

DRAWN BY: MLO
CHECKED BY: PBB