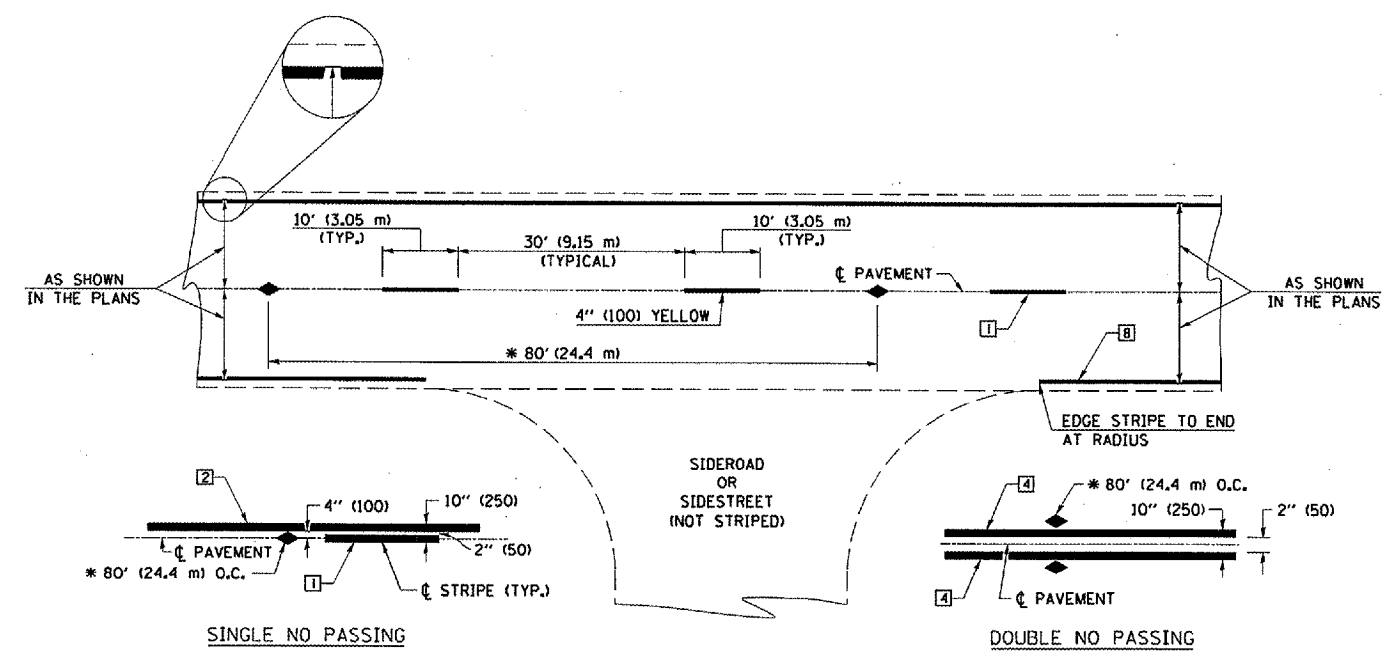


F.A.P. RTE.	SECTION	COUNTY	TOTAL SHEETS	SHEET NO.
758	3BR-1	MOULTRIE	24	16
FED. ROAD DIST. NO.		ILLINOIS FED. AID PROJECT		

TYPICAL APPLICATIONS OF PAVEMENT MARKINGS AND MARKERS



* REDUCE TO 40' (12.2 m) O.C. ON CURVES WITH POSTED OR ADVISORY SPEEDS OF 45 mph (70 km/h) OR LESS.

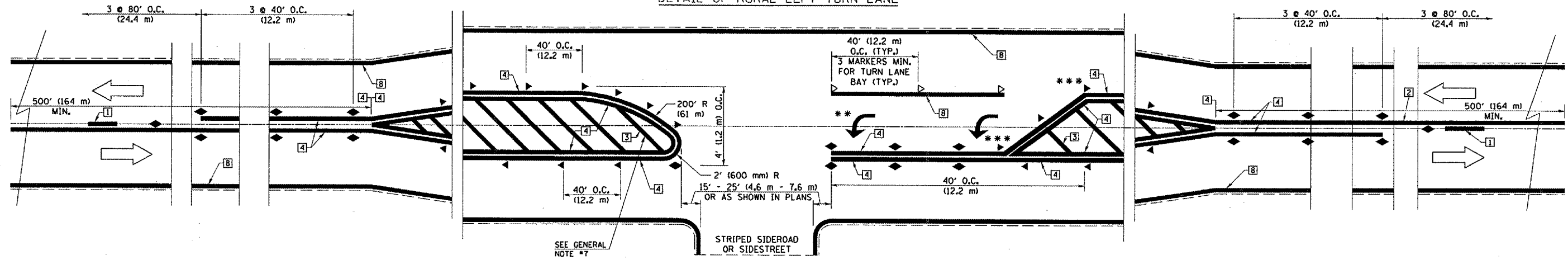
TYPICAL PAVEMENT MARKING LEGEND

- 1 4" (100) SKIP-DASH (YELLOW)
- 2 4" (100) SOLID (YELLOW)
- 3 12" (300) DIAGONAL (YELLOW)
- 4 4" (100) DOUBLE YELLOW (NARROW)
- 5 RESERVED
- 6 RESERVED
- 7 4" (100) SKIP-DASH (WHITE)
- 8 4" (100) SOLID (WHITE)
- 9 12" (300) DIAGONAL (WHITE)
- 10 6" (150) CROSS WALK (WHITE)
- 11 24" (600) STOP BAR (WHITE)
- 12 8" (200) SOLID (WHITE)
- 13 4" (100) LANE LINE EXTENSIONS (WHITE)
- 14 4" (100) PARKING WHITE

TYPICAL PAVEMENT MARKERS LEGEND

- ◆ TWO-WAY AMBER MARKER
- ▶ ONE-WAY AMBER MARKER
- ▷ ONE-WAY CRYSTAL MARKER

DETAIL OF RURAL LEFT TURN LANE



*** REDUCE SPACING IF NECESSARY TO ASSURE MARKERS AT CORNER POINTS.
 ** TURN ARROWS SHALL BE PLACED AS SHOWN ON SHEET #2.

SHEET 1 OF 3

DESIGNED	NAME	DATE	REVISIONS
J.M.H.		5/85	
CHECKED	FMS	6/85	
CADD NO.	F-5,25		

ALL DIMENSIONS ARE IN INCHES (MILLIMETERS) UNLESS OTHERWISE SHOWN.

REVISIONS	
NAME	DATE

ILLINOIS DEPARTMENT OF TRANSPORTATION
TYPICAL APPLICATION OF PAVEMENT MARKINGS
SHEET 1 OF 3
 SCALE: NONE
 DATE 3/06
 DRAWN BY DIST. 5
 CHECKED BY DIST. 5

c:\projects\0505203 (v8)\submit\10_13_06\details.dgn