

F.A. RTE.	SECTION	COUNTY	TOTAL SHEETS	SHEET NO.
•	(BX-1)TS-2	CLARK	8	1

• F.A.P. RTE. 332 AND F.A.S. RTE. 1707

D-97-082-06

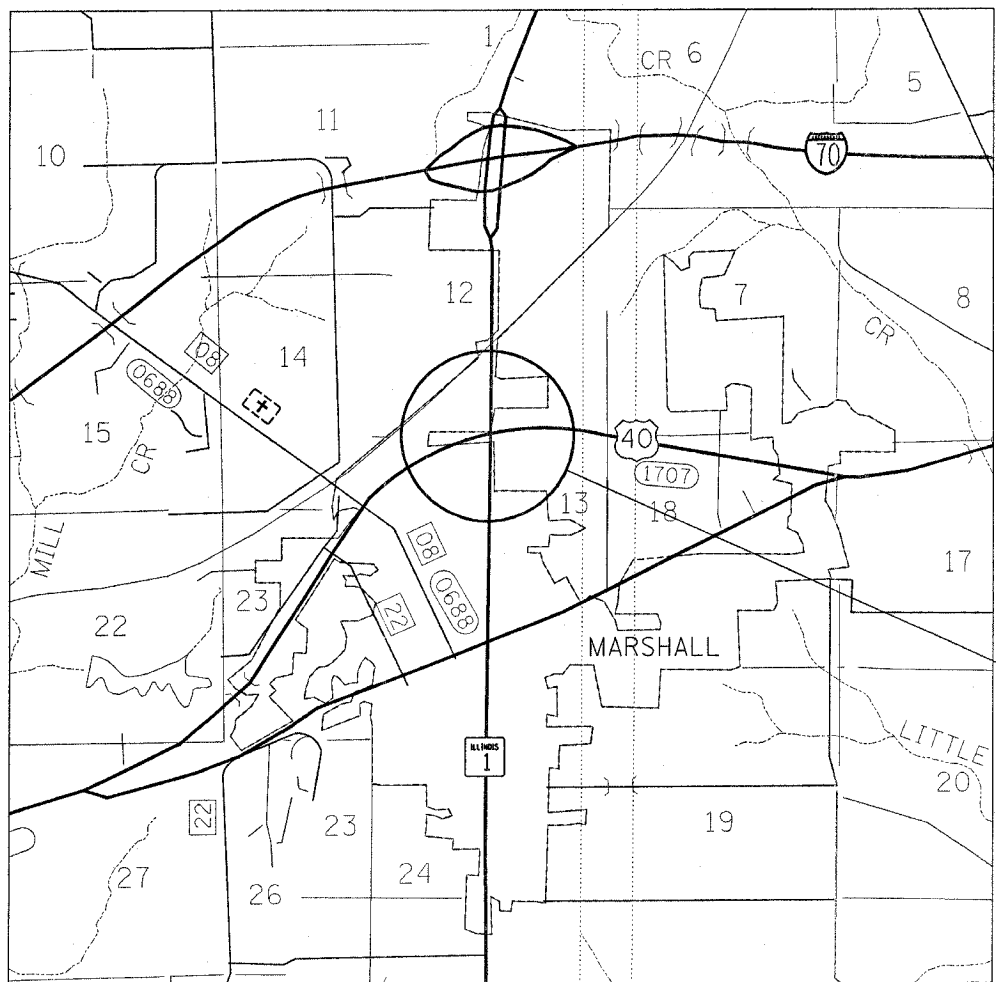
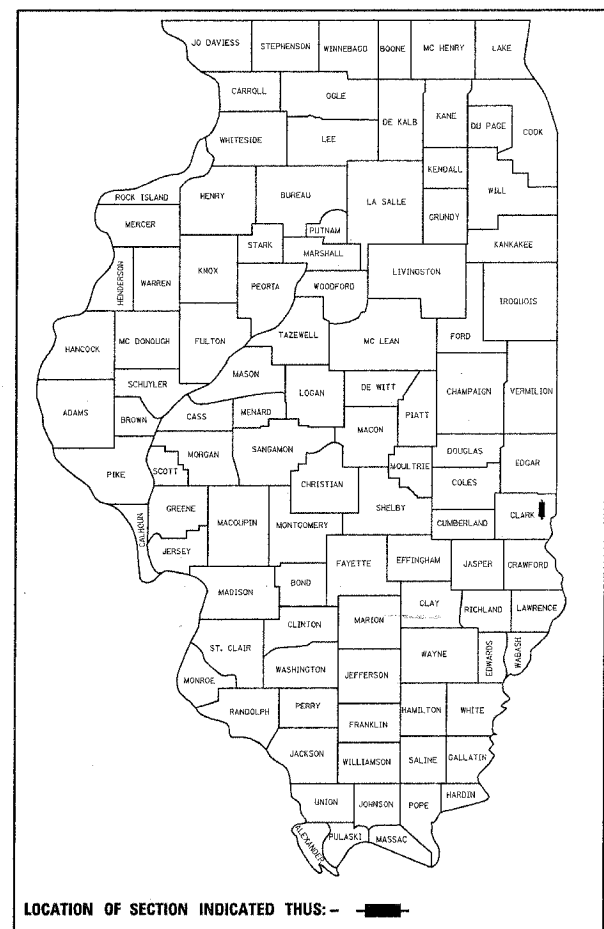
STATE OF ILLINOIS
DEPARTMENT OF TRANSPORTATION
DIVISION OF HIGHWAYS

**PROPOSED
HIGHWAY PLANS**

FAP ROUTE 332 (IL. RTE. 1) AT FAS ROUTE 1707 (U.S. ROUTE 40)
SECTION (BX-1)TS-2
PROJECT: HSIP-0332(086)
CLARK COUNTY

C-97-128-06

FOR INDEX OF SHEETS, SEE SHEET NO. 2



LOCATION OF PROJECT
IL. RTE. 1 AND U.S. RTE. 40
IN MARSHALL

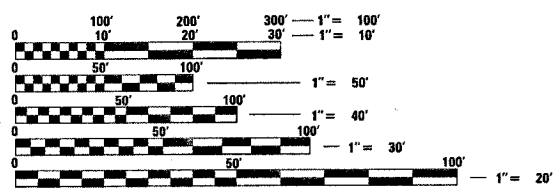
STATE OF ILLINOIS
DEPARTMENT OF TRANSPORTATION
DIVISION OF HIGHWAYS

SUBMITTED Oct. 17, 2006
Christy H Reed
DEPUTY DIRECTOR OF HIGHWAYS, REGION ENGINEER

December 8, 2006
Eric E. Hamrick
INTERIM ENGINEER OF DESIGN AND ENVIRONMENT

December 8, 2006
Milton R. Sees, P.E.
DIRECTOR OF HIGHWAYS, CHIEF ENGINEER

**PRINTED BY THE AUTHORITY
OF THE STATE OF ILLINOIS**



FULL SIZE PLANS HAVE BEEN PREPARED USING STANDARD ENGINEERING SCALES. REDUCED SIZED PLANS WILL NOT CONFORM TO STANDARD SCALES. IN MAKING MEASUREMENTS ON REDUCED PLANS, THE ABOVE SCALES MAY BE USED.

J.U.L.I.E.
JOINT UTILITY LOCATION INFORMATION FOR EXCAVATION
1-800-892-0123

CONTRACT NO. 74209

swartzrw
10/12/2006
c:\projects\74209a\d08206pa.dgn

PROJECT ENGINEER : ROB MACKLIN
SQUAD LEADER :
DESIGNER : LYNN MCCLELLAN
TELEPHONE : 217/342-3951 EX 245