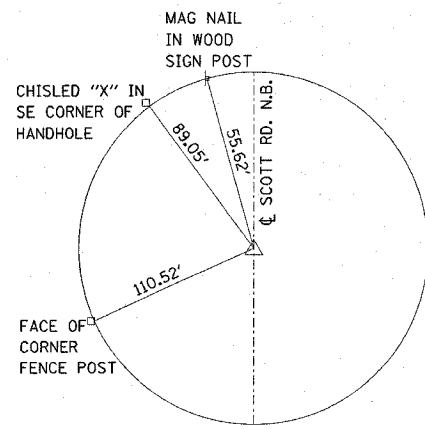
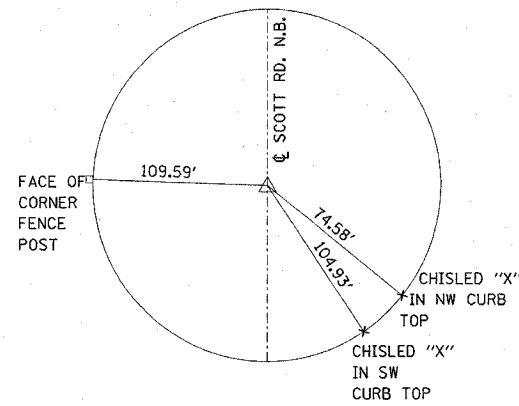


FAU RTE.	SECTION	COUNTY	TOTAL SHEETS	SHEET NO.
9177	44-1BR	ST. CLAIR	29	6
STA.		TO STA.		
FED. ROAD DIST. NO.	ILLINOIS	FED. AID PROJECT		



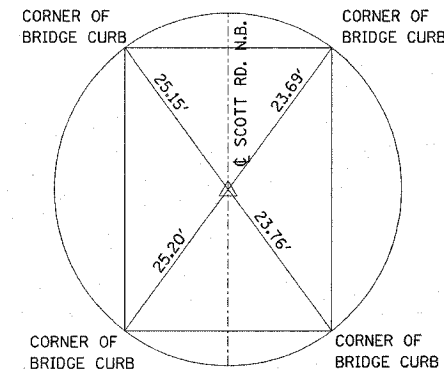
TIE POINT

MAG NAIL
STA. 95+00



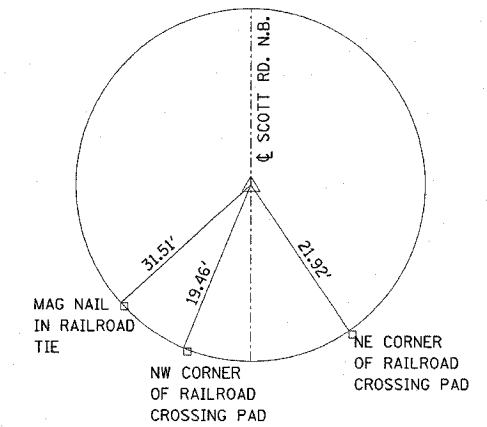
TIE POINT

MAG NAIL
P.C. 99+37.52



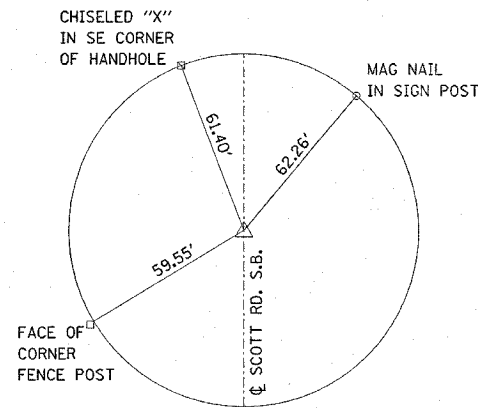
TIE POINT

MAG NAIL
STA. 100+00



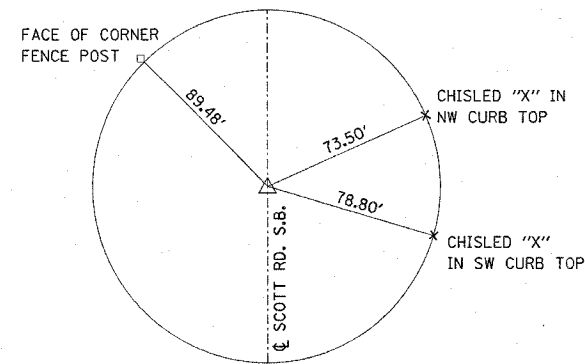
TIE POINT

MAG NAIL
P.T. 101+33.76



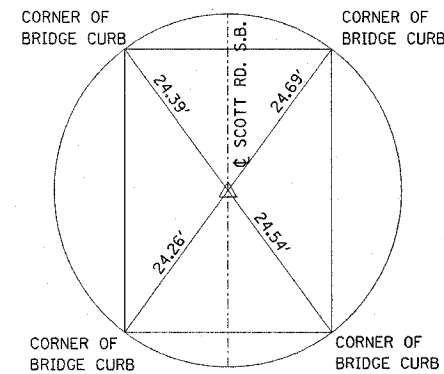
TIE POINT

MAG NAIL
STA. 195+00



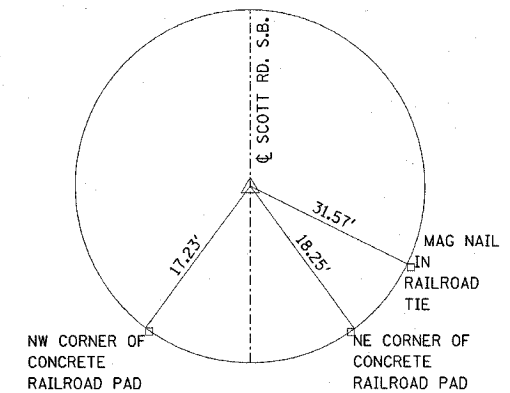
TIE POINT

MAG NAIL
STA. 198+66.30



TIE POINT

MAG NAIL
STA. 200+00



TIE POINT

MAG NAIL
P.T. 201+33.93

BENCHMARK: CUT "□" ON NORTH HEADWALL IN MIDDLE OF 2 STRUCTURES. ELEV = 440.710

PLOT DATE * DATE *
PLOT SCALE * SCALE *
REFERENCE * REF *

REVISIONS	
NAME	DATE

ILLINOIS DEPARTMENT OF TRANSPORTATION

TIE POINTS AND BENCHMARKS

FAU ROUTE 9177
SECTION 44-1BR
ST. CLAIR COUNTY